

Rev	Date	Revision	By	Chk
P01	220526	Bat Box Location amended	ABM	NS

**Notes**

For Health & Safety related information please refer to the Rolling Designers Risk Register. Where relevant, elements identified on this register are highlighted within the model and on the drawings with the following logo.

- DO NOT SCALE FROM DRAWING;
- Drawing to be printed in colour;
- All information contained in this drawing (including digital data) should be checked and verified prior to any fabrication or construction. Any inconsistencies or omissions should be reported to Bennetts Associates;
- Unless otherwise stated, all grids or co-ordinates are based on the Ordnance Survey National Grid via GPS Observations;
- Unless otherwise stated, all spot heights and levels are expressed as AOD for "above ordnance datum" based on the Ordnance Survey ODN (Ordnance Datum Newlyn).

Bennetts Associates Architects make no warranties, express or implied, with respect to the reuse of the data provided hereafter, regardless of its format or the means of its transmission.

All existing survey data is based on, or reference from, 3rd Party information. Unless otherwise stated, all structural, mechanical, electrical information is based on, or reference from, 3rd Party data.

© Crown Copyright 2016. All Rights Reserved.  
Ordnance Survey License 123456

# BENNETTS ASSOCIATES

1 Rawstorne Place, London EC1V 7NL  
T +44(0)207 5203300 •  
www.bennettsassociates.com  
For Bennetts Associates' electronic information issue disclaimer

Project  
Tribeca - The Apex  
REEF

Drawing Title  
Roof Plan  
Bird and bat box locations

Drawing Number  
TBA\_1A-BAA-Z1-XX-SK-A-00258\_01

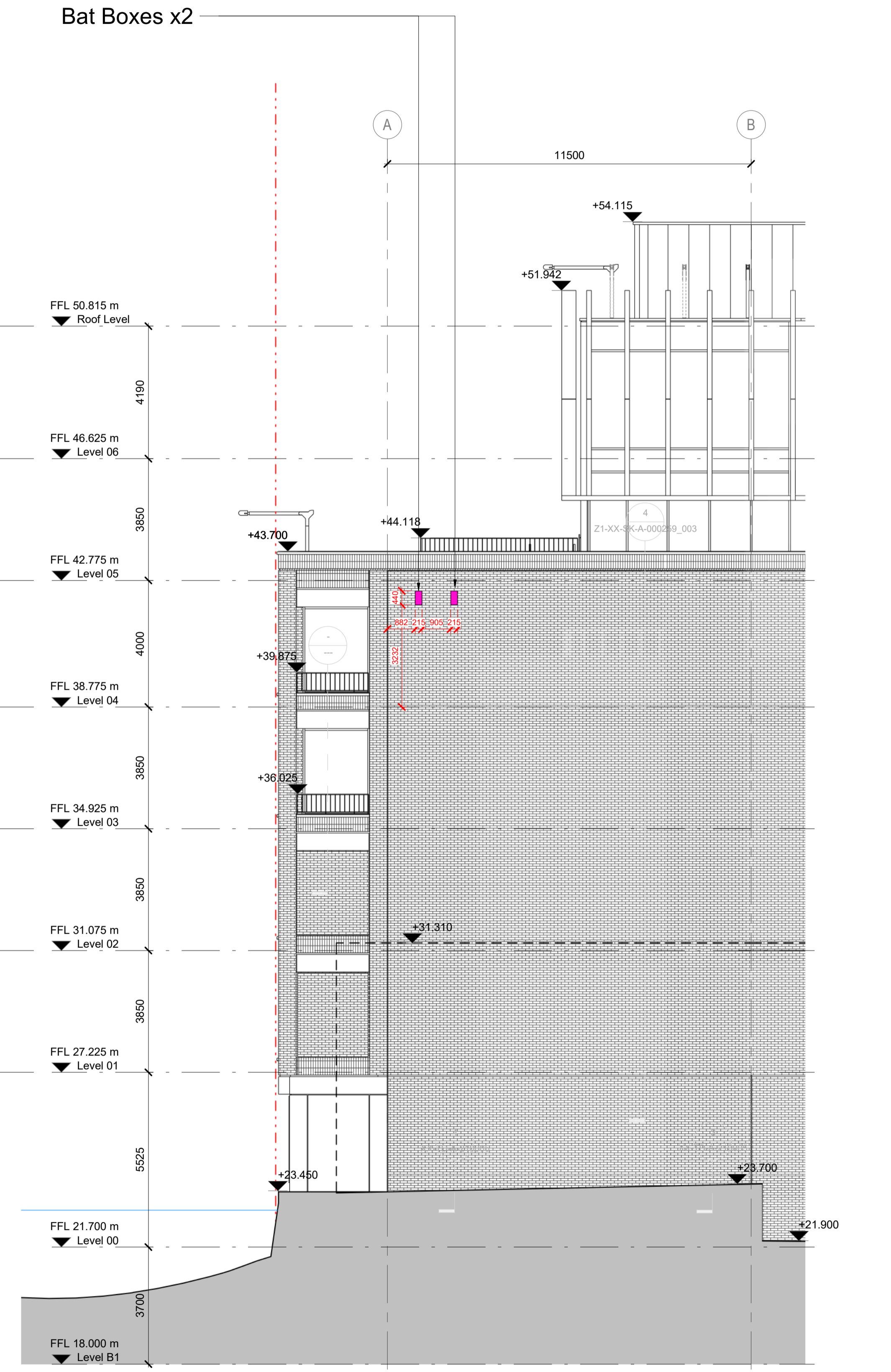
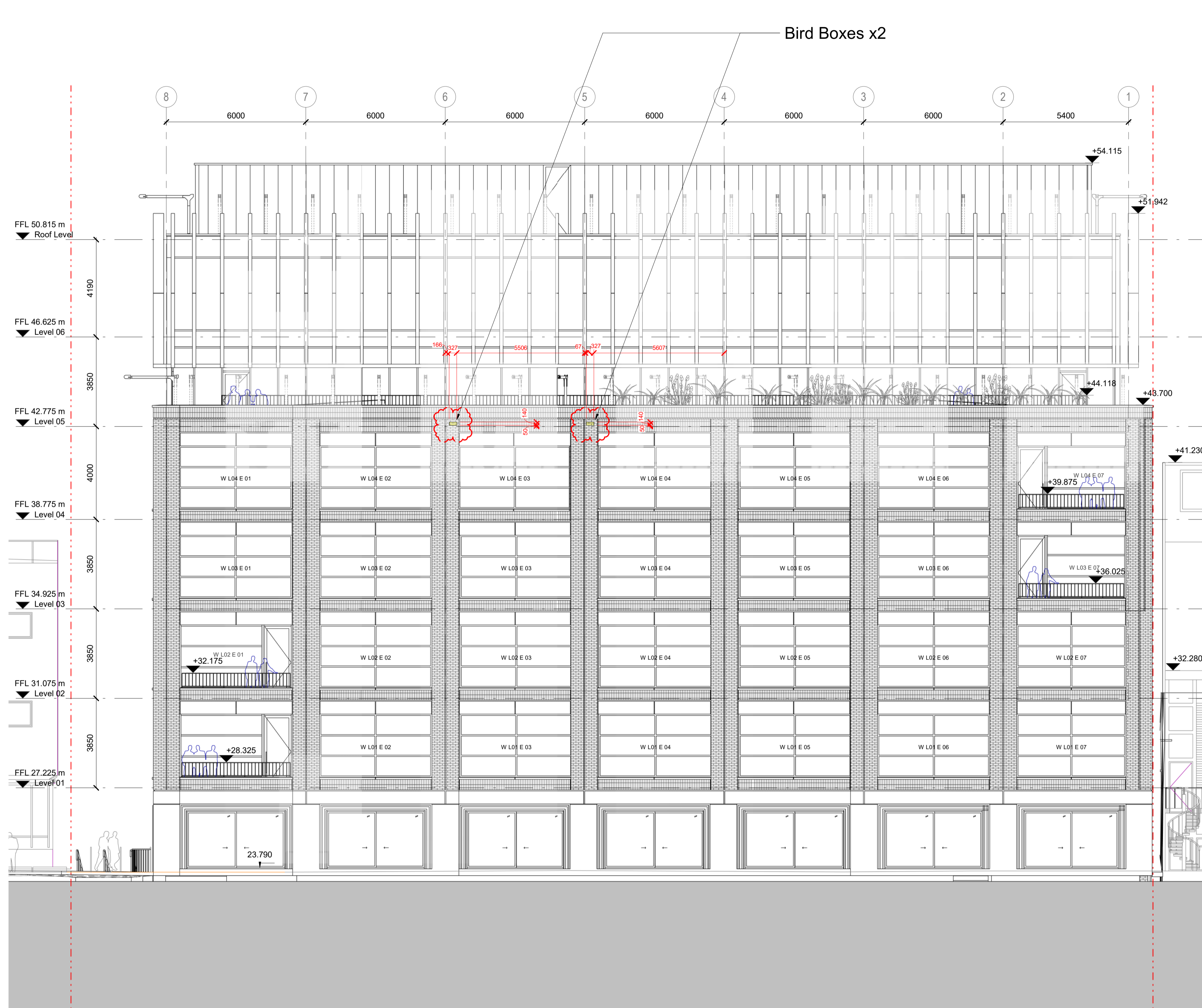
Revision/Suitability  
P01 /

Scale @ A3  
Scale @ A1  
1 : 100

Revision Date  
220526

Project No. TBA\_1A

YY MM DD



Rev	Date	Revision	By	Chk	Notes
P01	220526	Bat Box Location amended	ABM	NS	

**Notes**

For Health & Safety related information please refer to the Rolling Designers Risk Register. Where relevant, elements identified on this register are highlighted within the model and on the drawings with the following logo.

- DO NOT SCALE FROM DRAWING;
- Drawing to be printed in colour;
- All information contained in this drawing (including digital data) should be checked and verified prior to any fabrication or construction. Any inconsistencies or omissions should be reported to Bennetts Associates;
- Unless otherwise stated, all grids or co-ordinates are based on the Ordnance Survey National Grid via GPS Observations;
- Unless otherwise stated, all spot heights and levels are expressed as AOD for "above ordnance datum" based on the Ordnance Survey ODN (Ordnance Datum Newlyn).

Bennetts Associates Architects make no warranties, express or implied, with respect to the reuse of the data provided hereafter, regardless of its format or the means of its transmission.

All existing survey data is based on, or reference from, 3rd Party information. Unless otherwise stated, all structural, mechanical, electrical information is based on, or reference from, 3rd Party data.

© Crown Copyright 2016. All Rights Reserved.  
Ordnance Survey License 123456

**BENNETTS ASSOCIATES**

1 Rawstorne Place, London EC1V 7NL  
T +44(0)207 5203300 •  
www.bennettsassociates.com

For Bennetts Associates' electronic information issue disclaimer.

Project  
Tribeca - The Apex  
REEF

Drawing Title  
Bird and bat box locations

Project No. TBA\_1A

Drawing Number  
TBA\_1A-BAA-Z1-XX-SK-A-00258\_02

Revision/Suitability  
P01 /

Scale @ A3  
Scale @ A1  
1 : 100

Revision Date  
220526

YY MM DD