

Material Details - Lift Overrun

Lift overrun material and spacing to match existing dormer windows as much as reasonably possible.

Product: VMZinc Plus

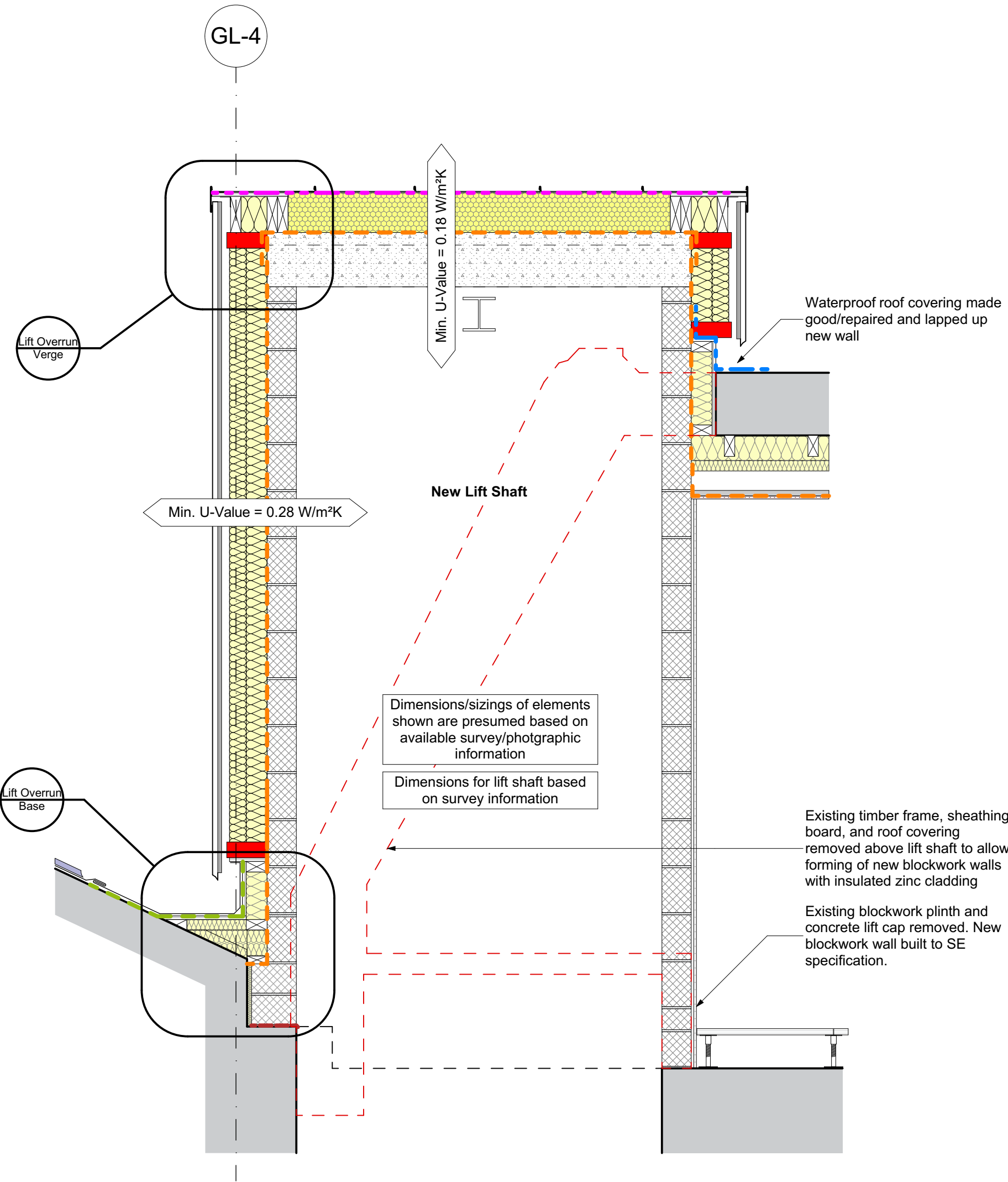
Finish: Natural VMZinc to match existing
Standing seam spacing max. 600 mm centres



Above Left: Zinc swatch

Above Right: Example of zinc swatch installed

Below: Existing lead dormer cheeks



P01	CS	18/07/22	Issued for Discharge of Condition	
Rev	Init	Date	Revision	

0mm

200

400

600

800

1000

1200

1400

Scale 1:20



NORWICH
The Old Drill Hall
23a Cattle Market Street
Norwich NR1 3DY
+44(0)1603 660711

LONDON
Floor 2
50-54 Clerkenwell Road
London EC1M 5PS
+44(0)20 7278 1739

www.lsiarchitects.co.uk

Client	
City of London Corporation	
Project	
City Junior School	
Title	
Details	
Lift Overrun - Section	

Scale @ A2 1:20, 1:3.18	Date 18/07/22	Drawn CS
Purpose of Issue Issued for Planning		
Drawing Code 21040-LSI-A1-XX-DR-A-1451	Suit. S2	Rev. P01