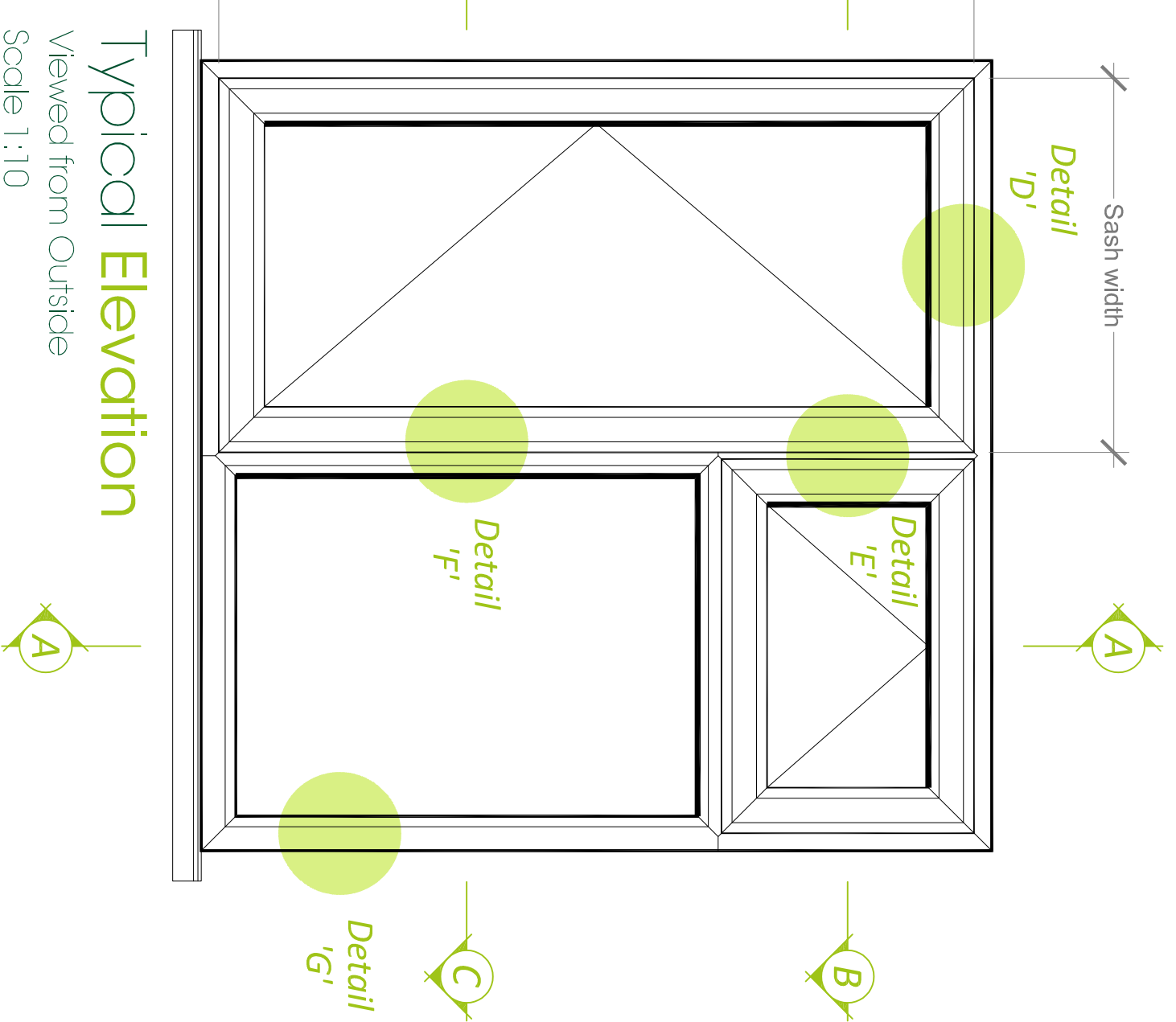


Internally Glazed Sculptured Casement Windows

The maximum sizes stated below (mm) are based on 28mm 4-20-4 standard double glazed units within frames manufactured to the reinforcement guidelines.

Maximum Sizes for

Casement top hung - (sash size): 1265 w x 1342 h, **max sash weight = 34.0kg**
 Casement side hung - (sash size): 715 w x 1342 h, **max sash weight = 19.2kg**

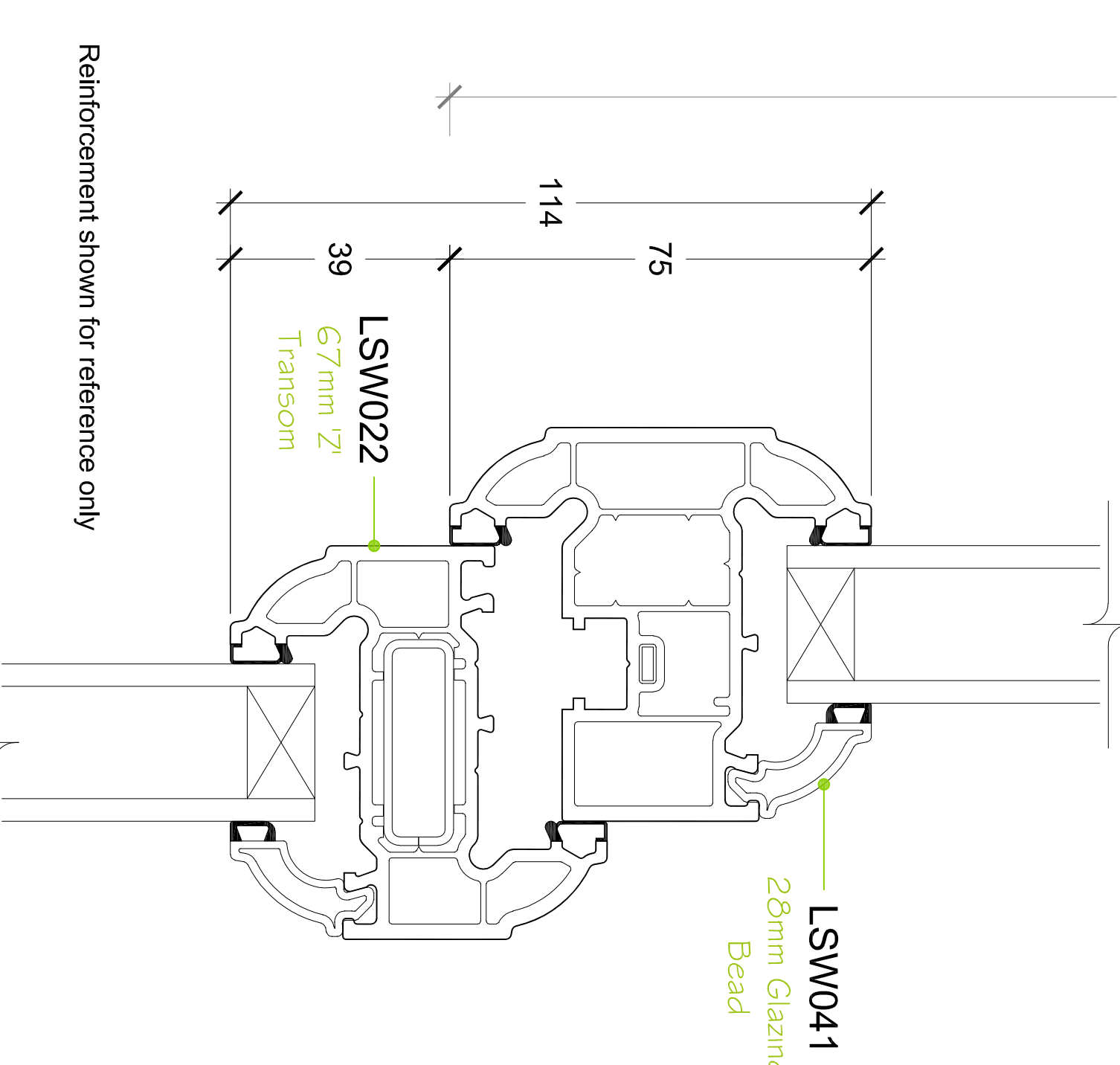
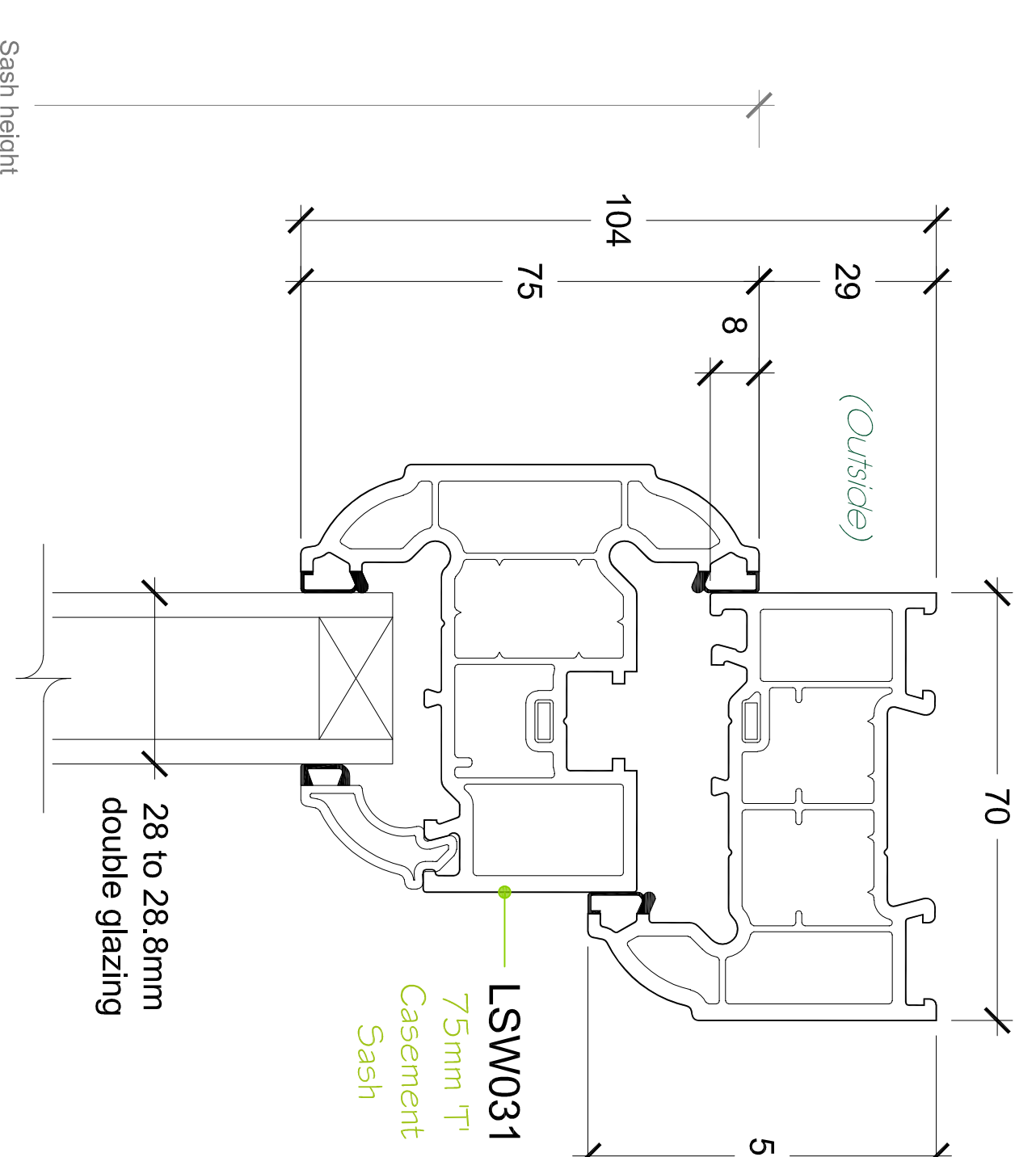
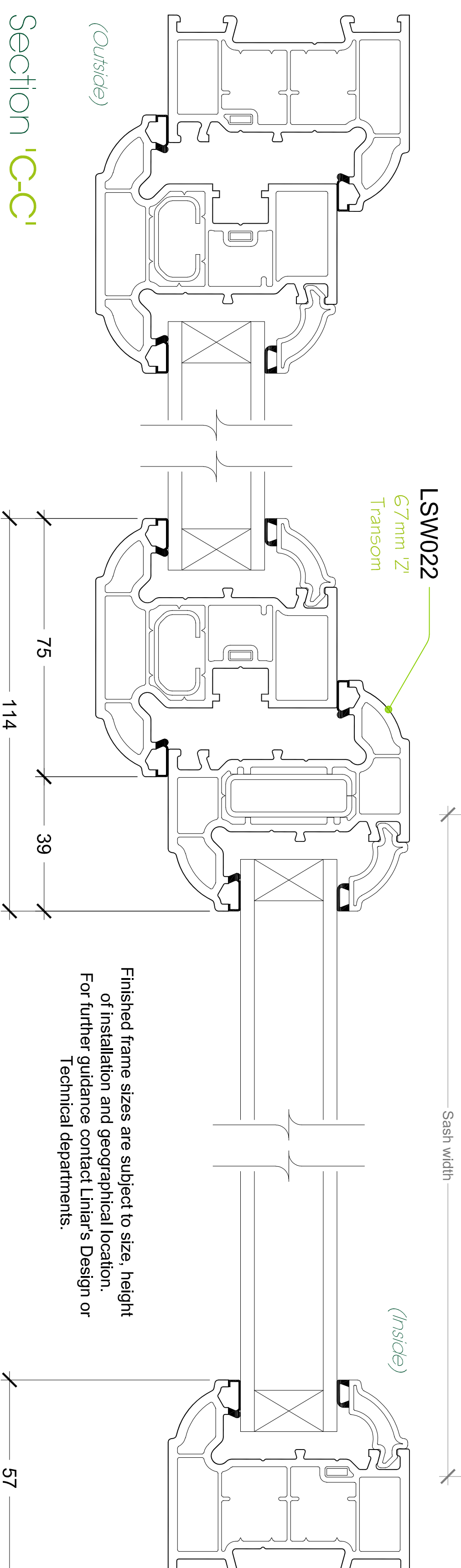
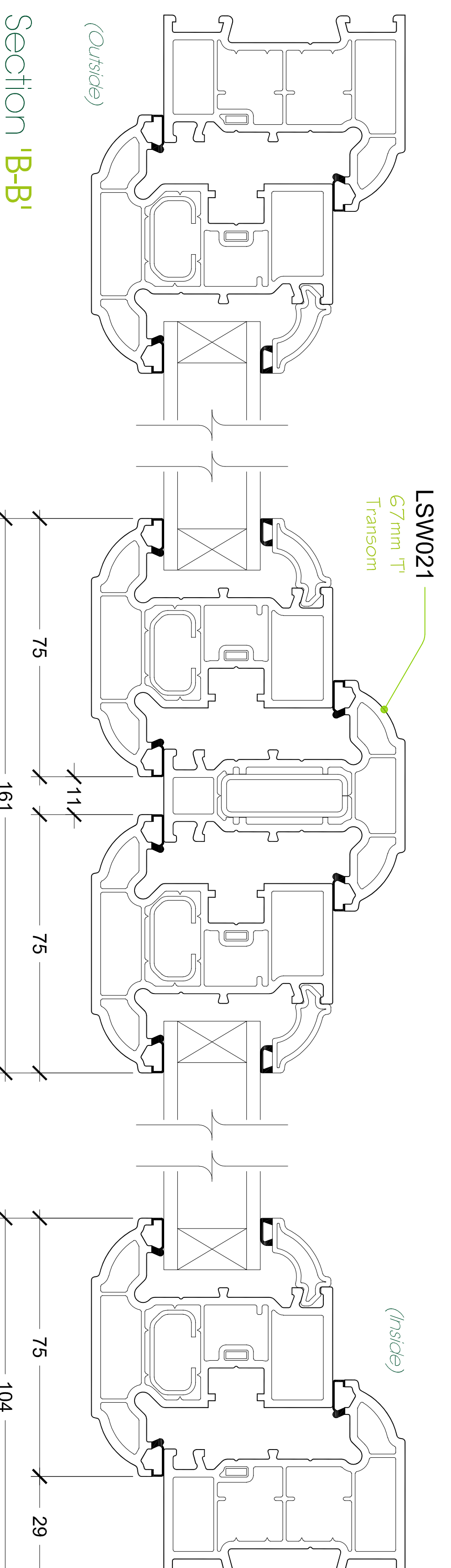


Kitemark **KM522039**

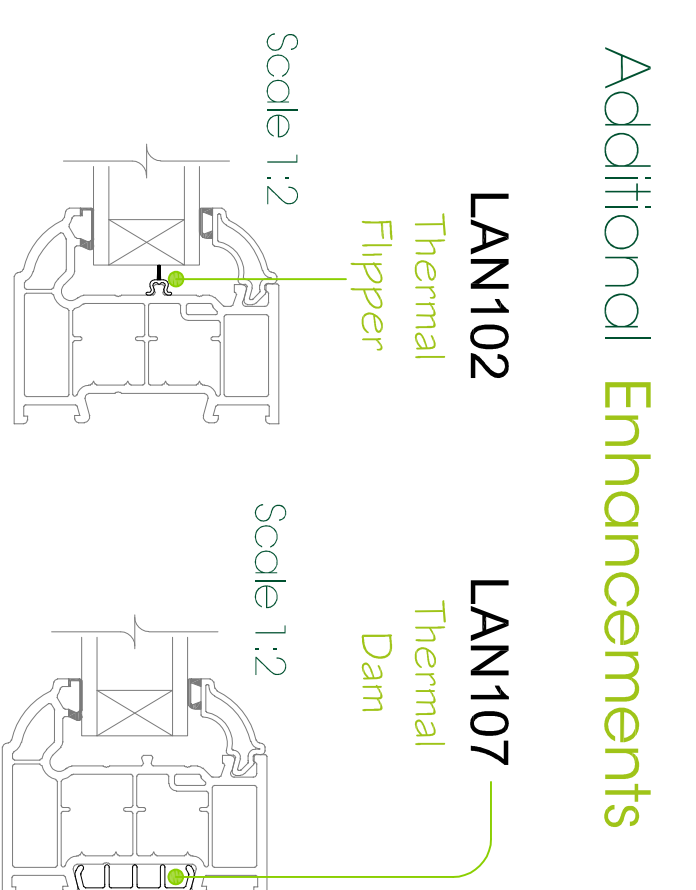
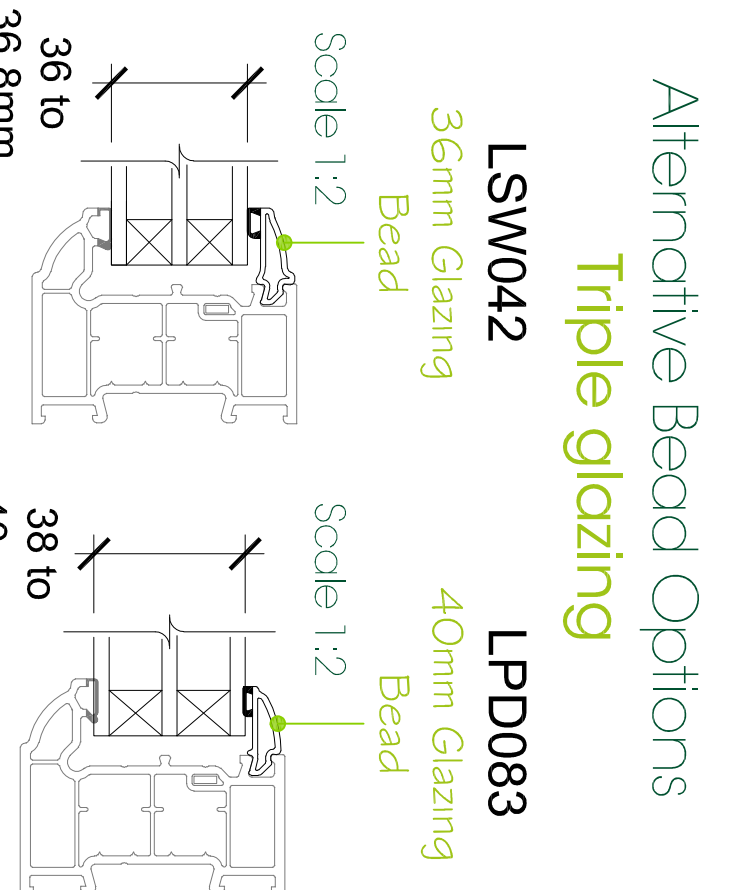
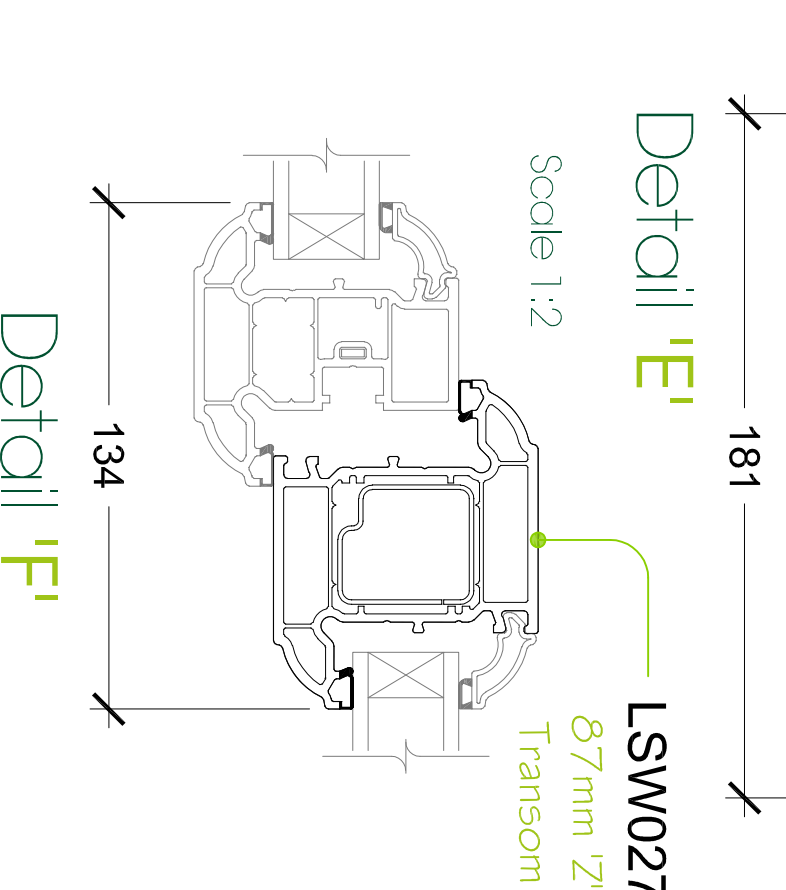
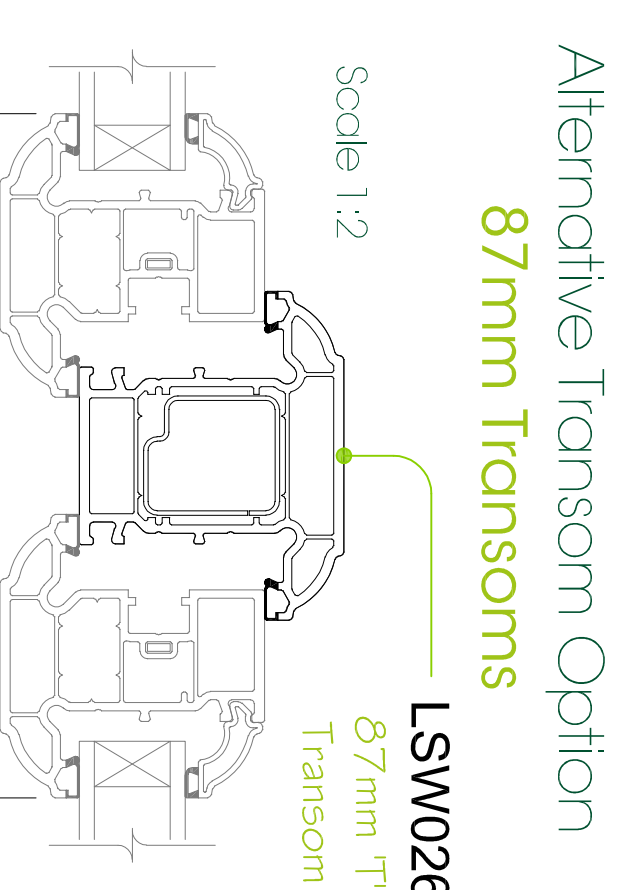
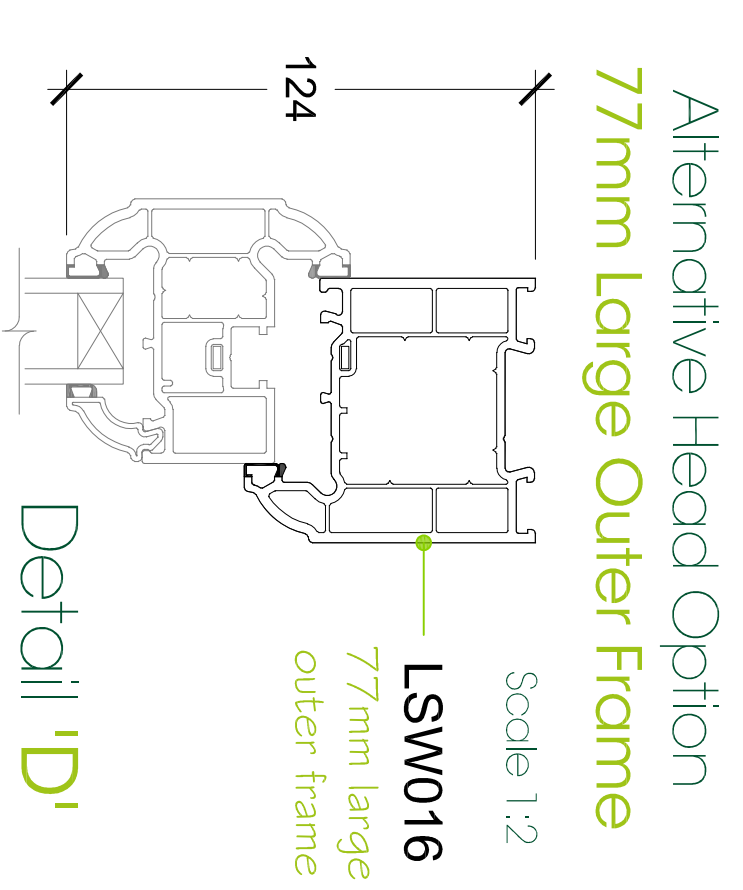
In respect of:
BS EN 12608 / PAS24

PVCU Profile - Enhanced Security Windows System Supplier

Maximum Sash Characteristics	Width (mm)	Height (mm)	Area (m ²)	Transom length (mm) inc frame	Air Permeability classification	Water-tightness classification	Resistance to wind classification	Exposure Category as given in Table 1 of BS 5375-Part 1
Top hung opening sash	1270	1340	-	-	2	E1050	A3	1200
Side hung opening sash	715	1340	-	-	3	E1050	A3	1200
Maximum Frame characteristics	3000	3000	6.00	-	4	5A	2	800
Maximum Transom/Mullion characteristics	1800	1800	3.24	1000	4	7A	2	800
Unreinforced members	2700	2700	3.51	1300	4	8A	2	800
Aluminium Reinforced members with LAR021	1800	1800	2.88	1600	4	E1050	2	800
Steel Reinforced members with LSR021	2700	2700	4.86	1800	4	7A	2	800



Liner Ltd takes no responsibility for the overall structural stability, quality of the installation or for the failure of its fittings, members or existing structures. All compartment walls need to be closed off adequately, including fire and smoke stopping where required. Perimeter joints around screens/windows needs to be sealed and weather proofed appropriately.



Data sheet Ref: LDS-003
Version: a
Issue Date: 29.04.2021
www.linlar.co.uk

