

Flood Risk Assessment

66-70, Parkway, Camden Town, London, NW1 7AH



Project Reference	21058
Document Number	21058 - Flood Risk Assessment
Suitability	S0 - Approved
Revision Number	P02 .01
Date	02/03/2022
Written By	A Patel
Checked By	Harpinder Bahra
Reviewed By	Gimy GetahunH Bahra
Approved By	Gimy GetahunH Bahra

Introduction	01
Flood Risk Assessment	02

Revision Record

Revision	Description	Date Issued	Originator
P01	Planning Issue	02/03/2022	AP

Introduction

Urban Context

This report presents the proposed scheme for 66-70, Parkway, Camden Town, London, NW1 7AH [see map]. It outlines the scheme in relation to specific areas of flood risk and prevention.

This proposal is for the permitted development from offices (Class E) to two residential units (C3 use) on the first and second floor.

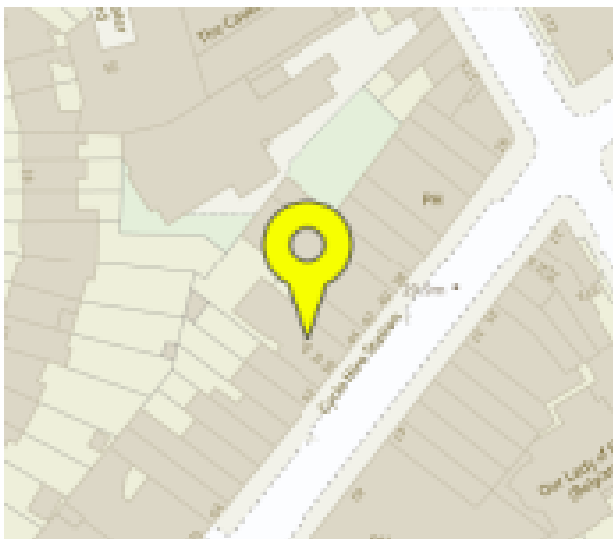
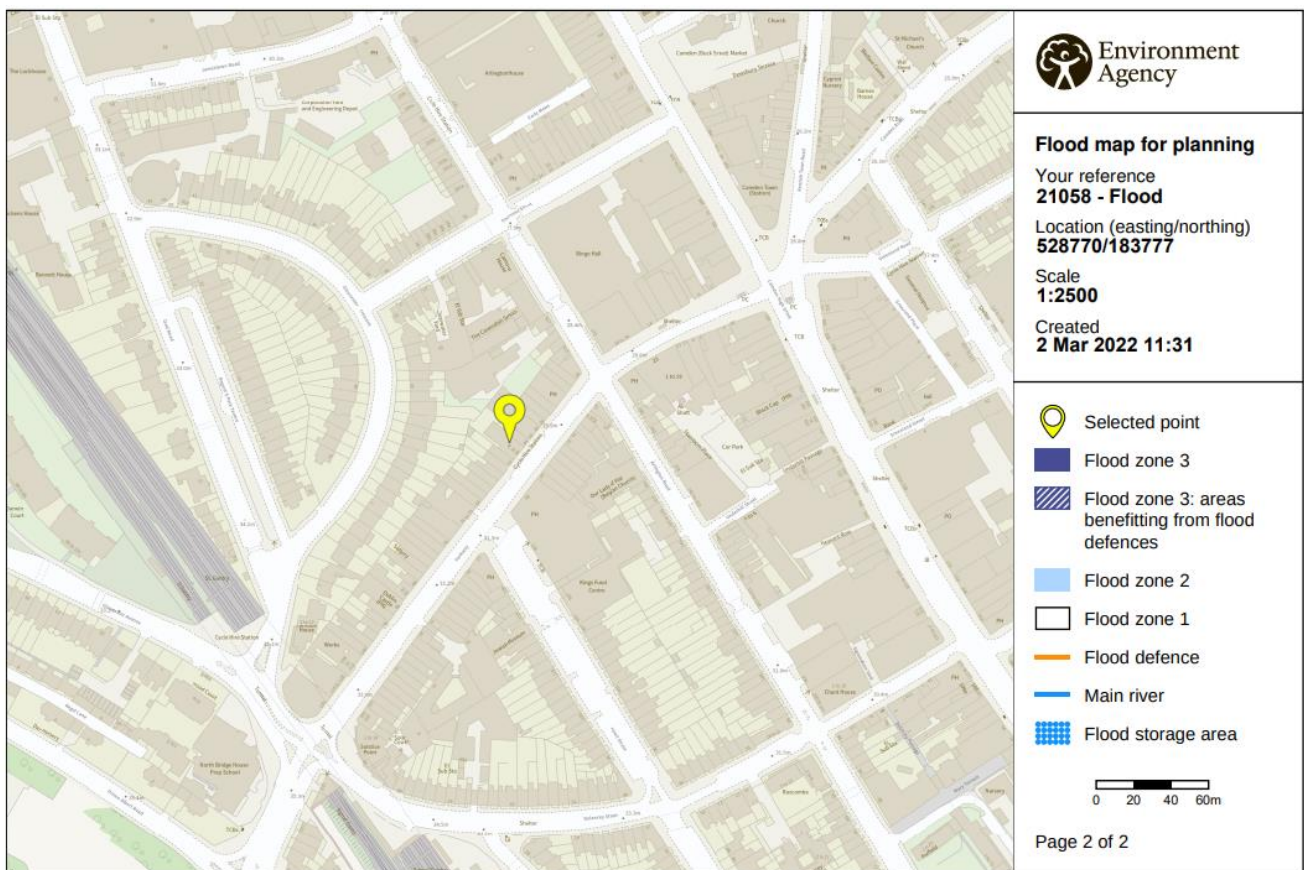
Fig 1: Site Location and Block Plan



Flood Risk Assessment

Investigating if the site is not within an area of potential flooding, the maps below from environmental agency website indicate the proposed is far outside any areas of Flood warning and risk of flooding from rivers and sea.

Fig 2: Flood map for planning





g a a . d e s i g n

☎ 01753 965 100

✉ info@gaa.design

SUITE 1, FIRST FLOOR, AQUASULIS, 10-14 BATH ROAD, SLOUGH, SL1 3SA

GAA Design is the trading name for GA&A Design Ltd.

RIBA 
Chartered Practice

arb

Architects
Registration
Board

fsb[®]
MEMBER

QMS[®] ISO 9001:2015
REGISTERED

QMS[®] ISO 14001:2015
REGISTERED