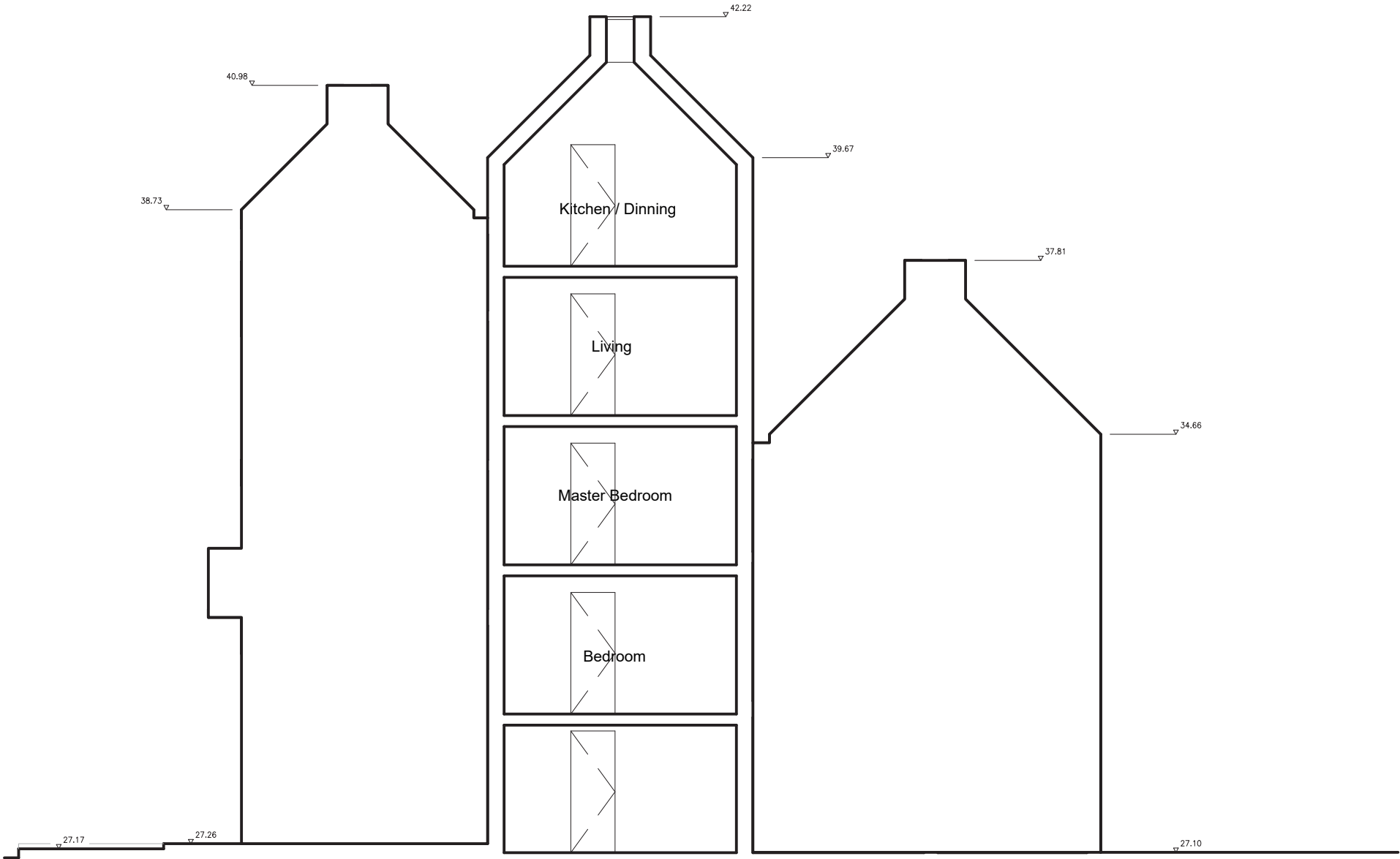


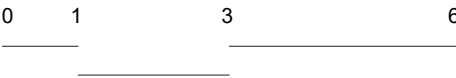
Section AA



HENNING  
STUMMEL  
ARCHITECTS LTD

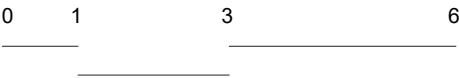
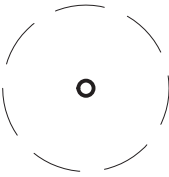
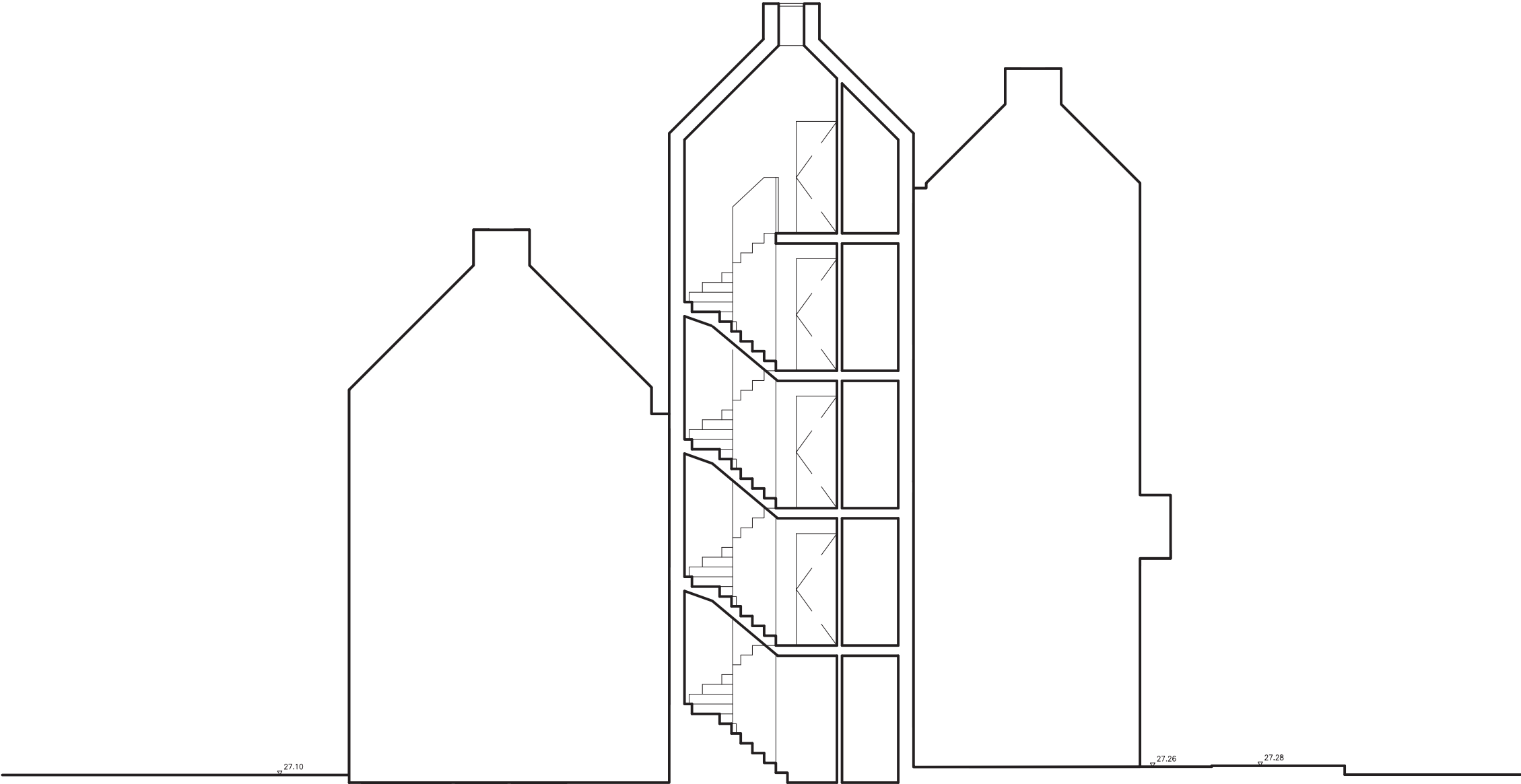
Gate House, 1 Smugglers Yard  
London W12 8HU, United Kingdom  
+44 (0) 797 313 1882  
+44 (0) 208 749 0794  
mail@henningstummelarchitects.co.uk  
www.henningstummelarchitects.co.uk

Copyright Henning Stummel Architects Ltd  
Do not scale drawing.  
Drawing to be read in conjunction with relevant specialist drawings and specifications.  
All dimensions are for guidance only.  
Dimensions are not to be used for construction and have to be confirmed on site.



Project No.	101d - Royal College Street	Date	18/07/22	Rev.	A	Drawn	M.B	Description	Planning Application
Drawing Title	Section AA	Date	July 2022	Scale	1 : 100				
Drawing No.	101d_200	Rev.	A						

Section BB



HENNING  
STUMMEL  
ARCHITECTS LTD

Gate House, 1 Smugglers Yard  
London W12 8HU, United Kingdom  
+44 (0) 797 313 1882  
+44 (0) 208 749 0794  
mail@henningstummelarchitects.co.uk  
www.henningstummelarchitects.co.uk

Copyright Henning Stummel Architects Ltd  
Do not scale drawing.  
Drawing to be read in conjunction with relevant specialist drawings and specifications.  
All dimensions are for guidance only.  
Dimensions are not to be used for construction and have to be confirmed on site.

Project No.	101d - Royal College Street	Date	18/07/22	Rev.	A	Drawn	M.B	Description	Planning Application
Drawing Title	Section BB	Date	July 2022	Scale	1 : 100				
Drawing No.	101d_210	Rev.	A						