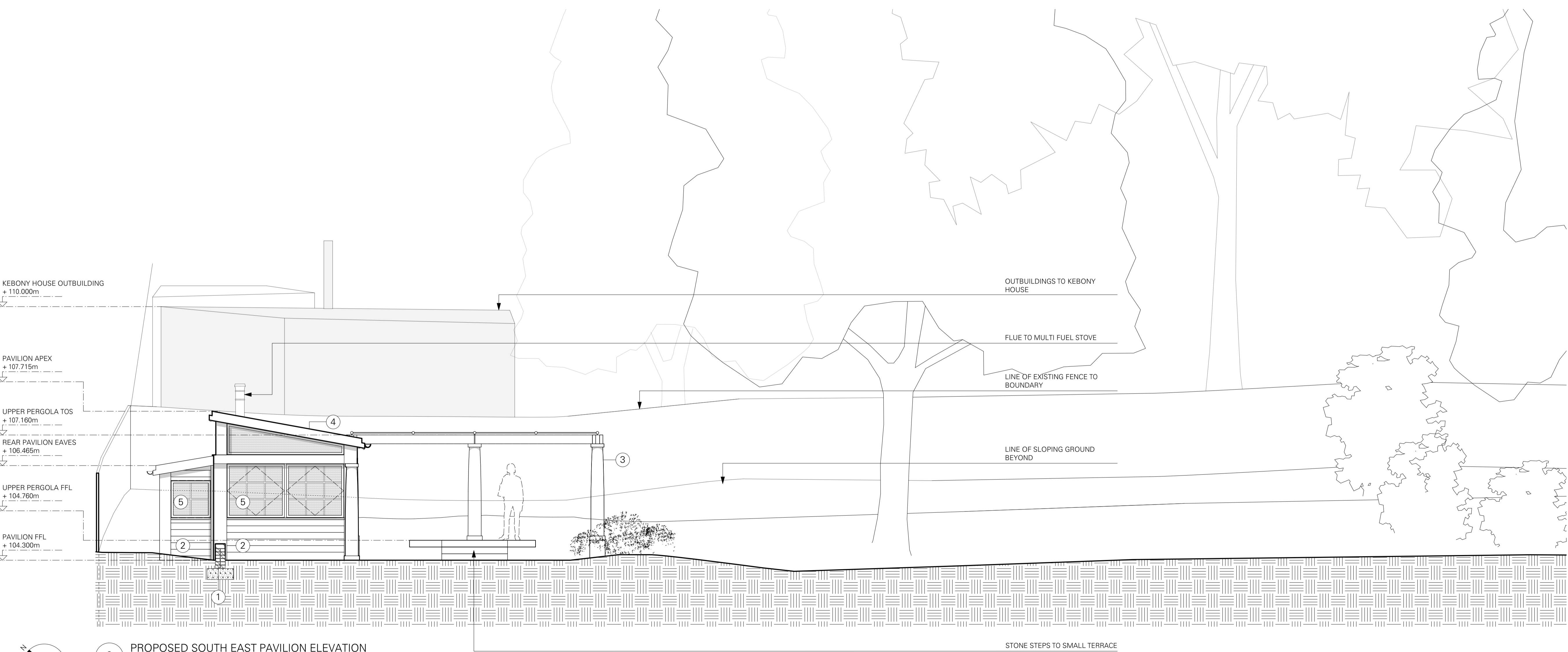
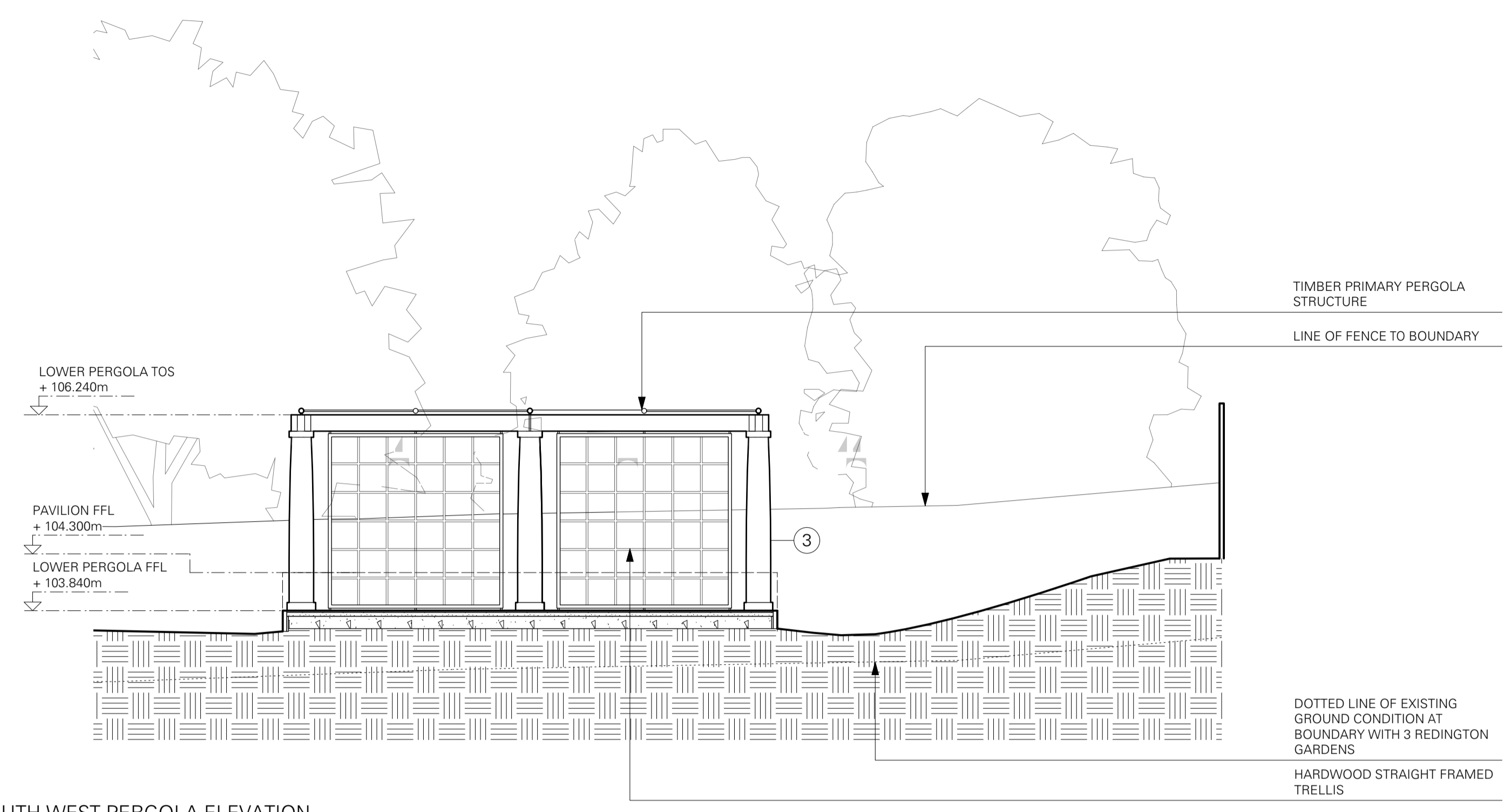
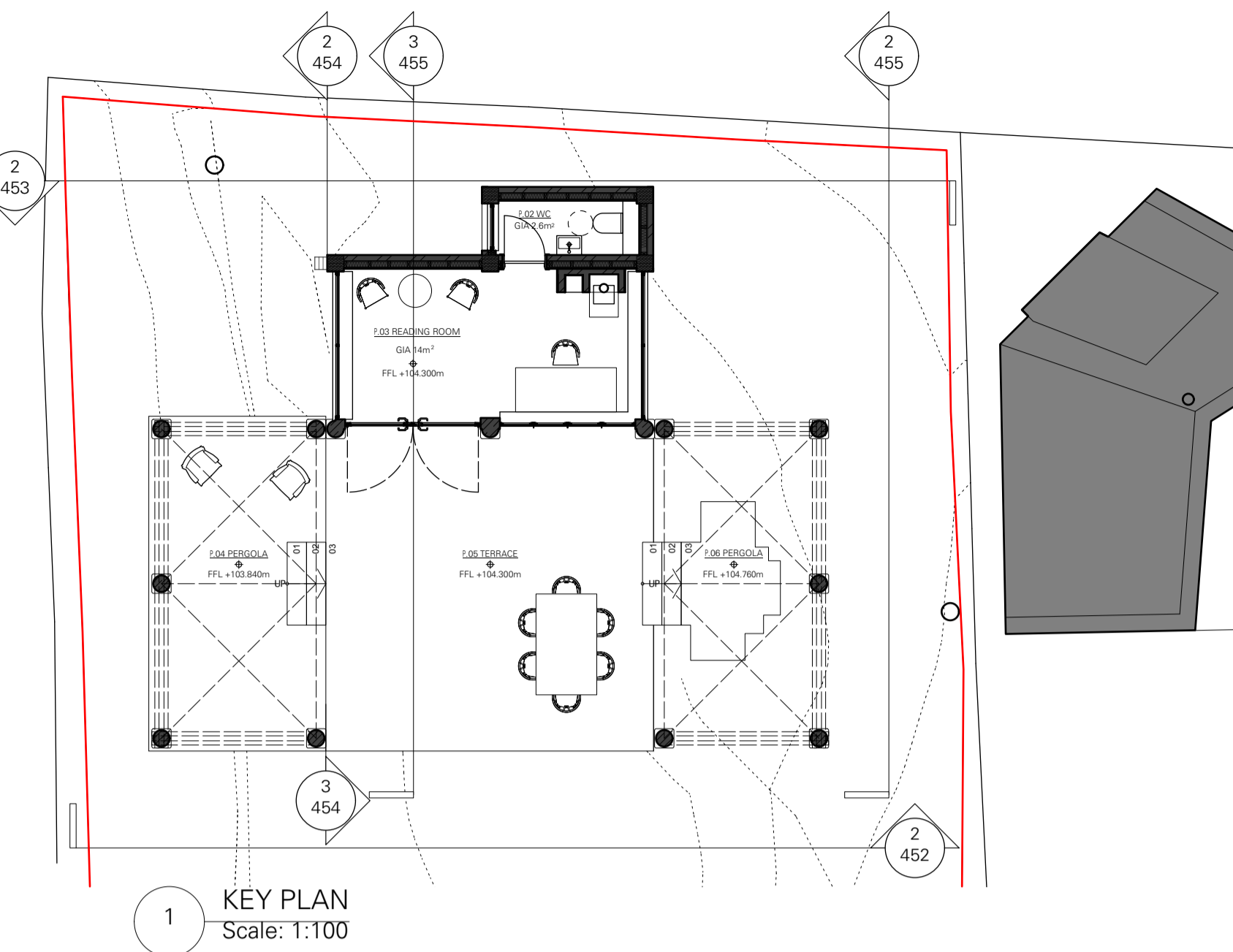


- NOTES
- MATERIALS KEY**
- 1 RED FACING BRICKWORK
 - 2 PAINTED TIMBER BOARDING
 - 3 TIMBER COLUMNS
 - 4 LEAD + GREEN ROOF
 - 5 METAL FRAME DOUBLE GLAZED WINDOW/DOOR



| CHECK | REVISION NOTES | DATE | REV |
|-------|-----------------------|------------|-----|
| SD | AMENDMENTS THROUGHOUT | 28/06/2022 | P1 |
| LH | FOR PLANNING | 19/01/2022 | P0 |

28 REDINGTON ROAD, LONDON NW3 7RB

PROPOSED PAVILION SOUTH-EAST & SOUTH-WEST PERGOLA ELEVATIONS

FOR PLANNING

| | | | |
|---------|------------------|-------------|-----|
| 350 | 1:50 | 454 | P1 |
| JOB NO. | SCALE (AS SHOWN) | DRAWING NO. | REV |

TC
A

Thomas Croft Architects
Studio 117
Great Western Studios
65 Alfred Road
London, W2 5EU
United Kingdom

+44 (0)20 8962 0066
email@thomascroft.com
www.thomascroft.com