

Disclaimer
Do not scale from this drawing. Check all dimensions on site before fabrication or setting out. This document is copyright and may not be reproduced without permission of the owner.

Notes



1 Wider Section BB - Proposed
1 : 100

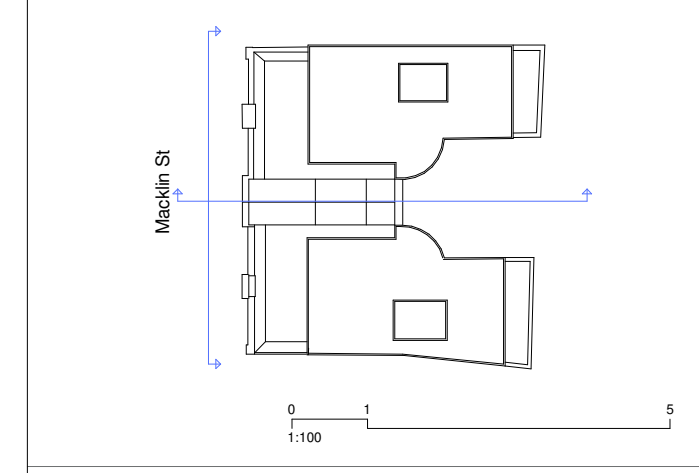


2 Elevation - Wider West - Proposed
1 : 100

Rev	Reason for Issue	Date	Drw	Chk
02	Issued for Planning	27/05/22	Apt	Apt
01	Issued for Planning	29/04/22	Apt	Apt

Consultants

Structures	Heyne Tillett Steel
MEP, Fire	Horea Lea
Acoustic	Horea Lea
Air Quality	Horea Lea
Energy & Sustainability	Horea Lea
Transport & C&M	TTP
Cost Manager	Gardiner & Theobald
Right of Light	Right of Light Consulting
Building Control	Bureau Veritas Building Control
Principle Designer	Civil Safety Consultancy Ltd
Planning Consultant	JLL
Heritage	HCUK Group



Apt

235 St John Street London EC1V 4NG www.apt.london

Client
Eleric Ltd.

Project
Lupin House

Drawing Title
Context Section and Elevation - General Arrangement - Proposed

Scale
1 : 100 @ A1

Planning

Project No. 21035	Drawing No. A_PL_P_302	Revision 02
-----------------------------	----------------------------------	-----------------------