

Disclaimer
Do not scale from this drawing. Check all dimensions on site before fabrication or setting out. This document is copyright and may not be reproduced without permission of the owner.

Notes

These areas are just indicative for design development and shouldn't be relied on for calculations or financial appraisals.

- The methodology used for calculating GEA, GIA and NIA is as defined by the RICS 'Code for Measuring Practice 6th Edition'. NIA is not the same as Net Floor Area (NFA) as it does not take into consideration internal walls or balconies.
- All areas relate to the building at the current stage of the design. Any decisions made on the basis of the stated areas are subject to:
2.1 Design development including: M+E strategy and provision of plant, Parking and cycling spaces, Servicing requirements, Amenity space (i.e. terraces), Height of the building (as this effects efficiency), Number of lifts required, Size of lobbies
2.2 Accuracy of site surveys, site levels and site dimensions
2.3 Daylight, sunlight and rights of light requirements
2.4 Construction methods and building tolerances
2.5 Local authority and statutory consents and conditions

GIA

03	Issued for Information	09/06/22	Apt Apt
02	Issued for Information	26/04/22	Apt Apt
01	Issued for Information	20/04/22	Apt Apt
Rev	Reason for Issue	Date	Drw Chk

Consultants

Structures	Heyne Tillett Steel
MEP, Fire	Horea Lea
Acoustic	Horea Lea
Air Quality	Horea Lea
Energy & Sustainability	Horea Lea
Transport & CMP	TTP
Cost Manager	Gardiner & Theobald
Right of Light	Right of Light Consulting
Building Control	Bureau Veritas Building Control
Principle Designer	Owl Safety Consultancy Ltd
Planning Consultant	JLL
Heritage	HCUK Group

0 1 10
1:200

Apt

235 St John Street London EC1V 4NG www.aplondon

Client
Elleric Ltd.

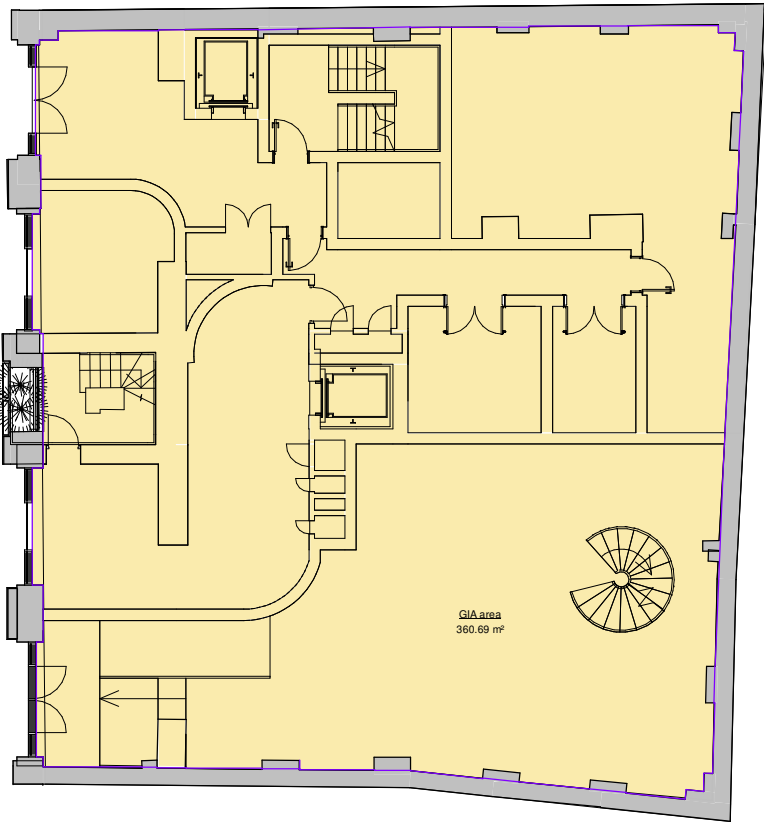
Project
Lupin House

Drawing Title
GIA area
Sketches

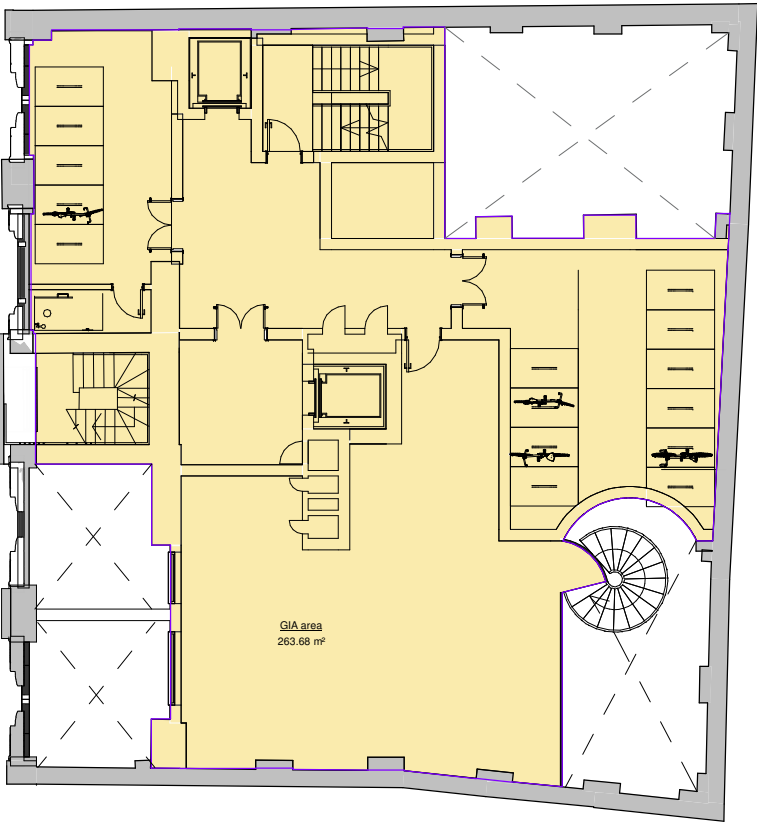
Scale
1 : 200 @ A1

Planning

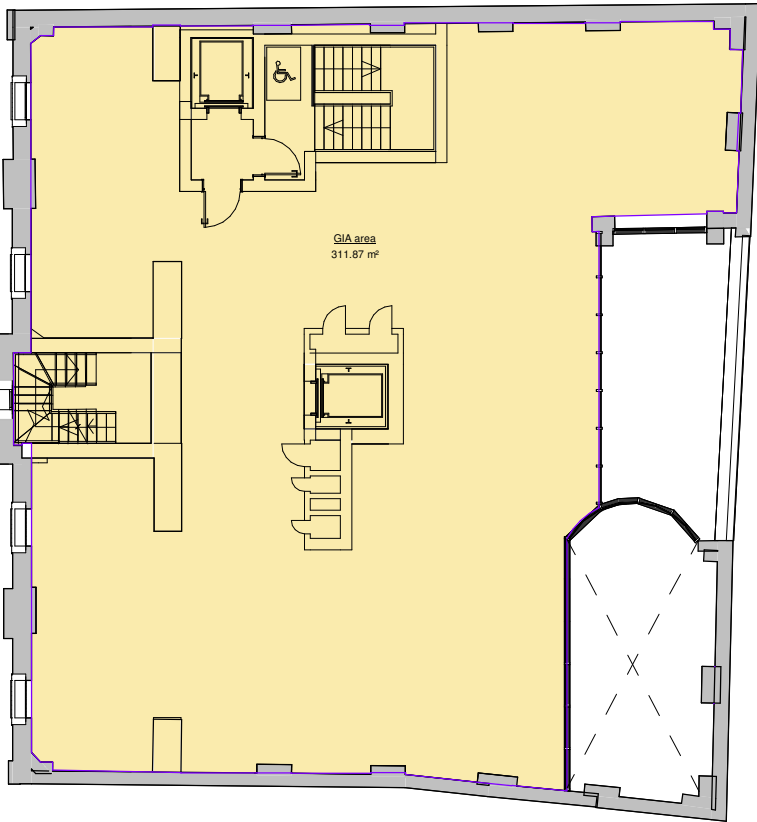
Project No. 21035	Drawing No. A_SK_007	Revision 03
----------------------	-------------------------	----------------



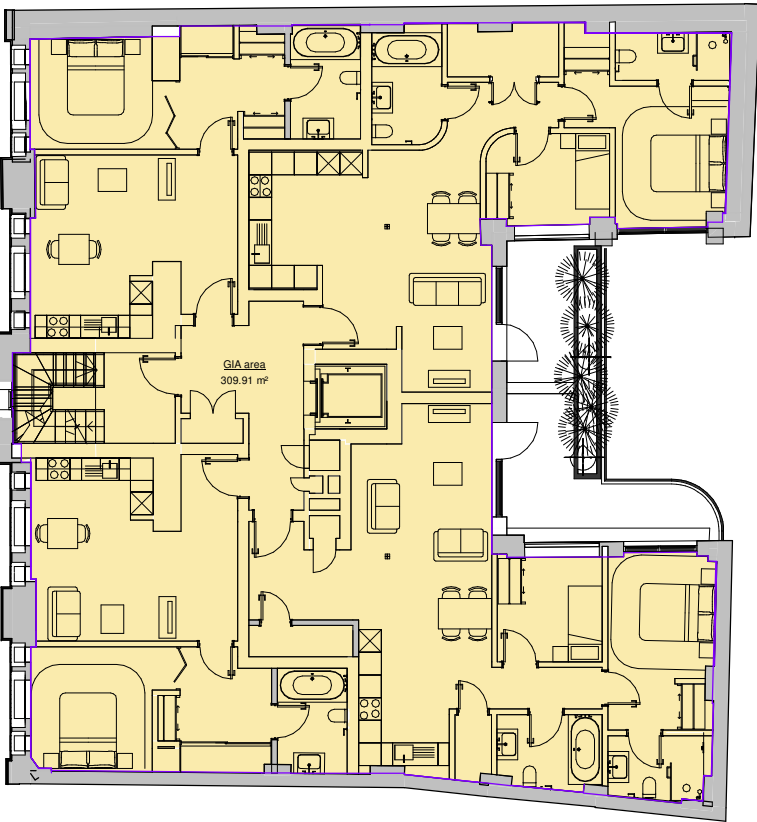
1 Level 00
1 : 200



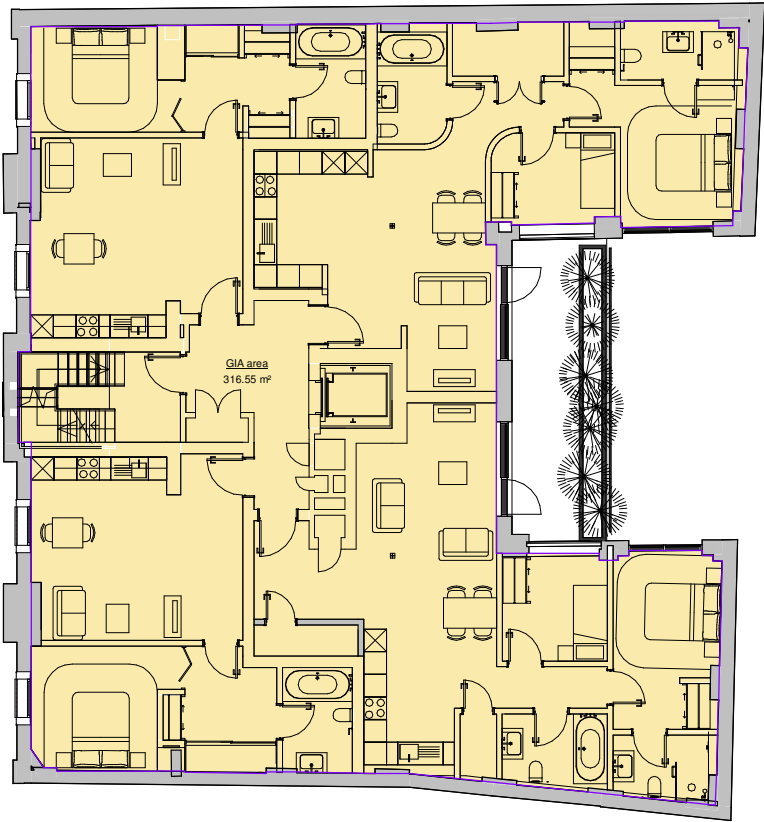
2 Mezz Level
1 : 200



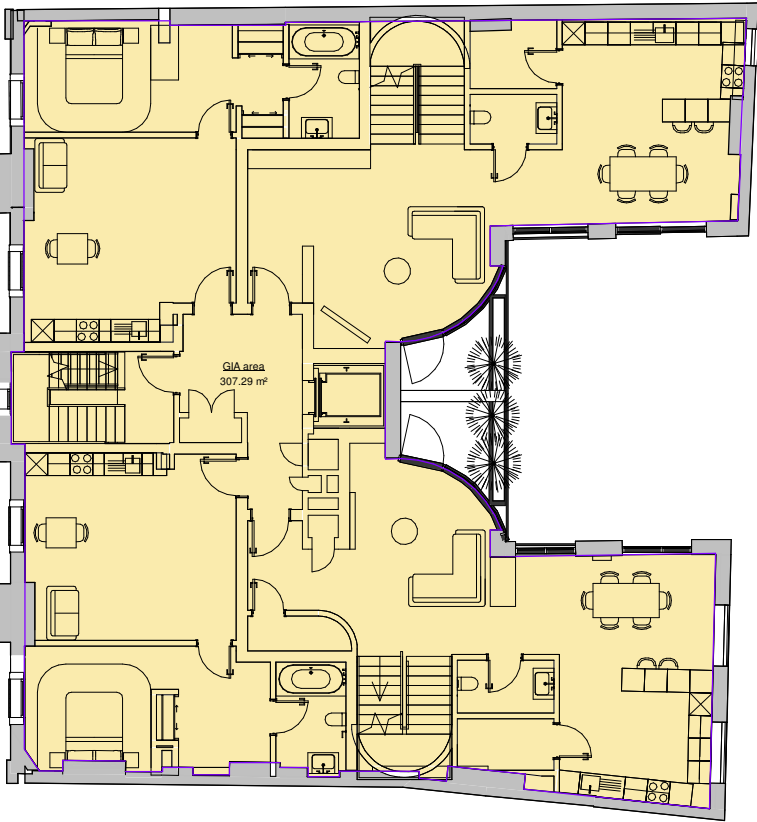
3 Level 01
1 : 200



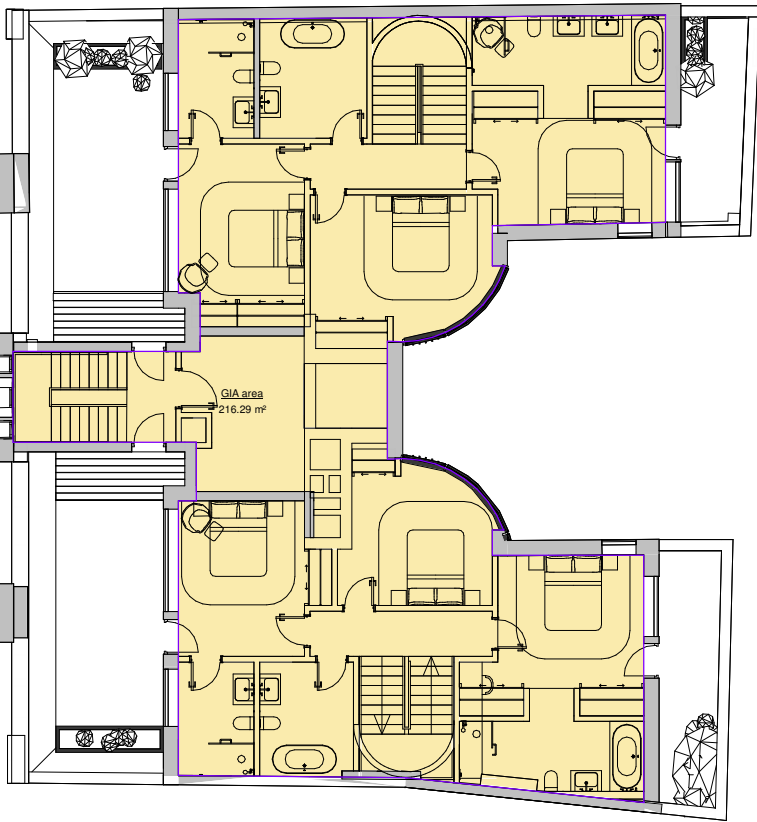
4 Level 02
1 : 200



5 Level 03
1 : 200



6 Level 04
1 : 200



7 Level 05
1 : 200

Area Schedules - GIA

Level	Area (sq m)	Area (sq ft)
Level 00	361 m ²	3,882 ft ²
Mezz Level	264 m ²	2,838 ft ²
Level 01	312 m ²	3,357 ft ²
Level 02	310 m ²	3,336 ft ²
Level 03	317 m ²	3,407 ft ²
Level 04	307 m ²	3,308 ft ²
Proposed Level 05	216 m ²	2,328 ft ²
Total	2,086 m ²	22,456 ft ²