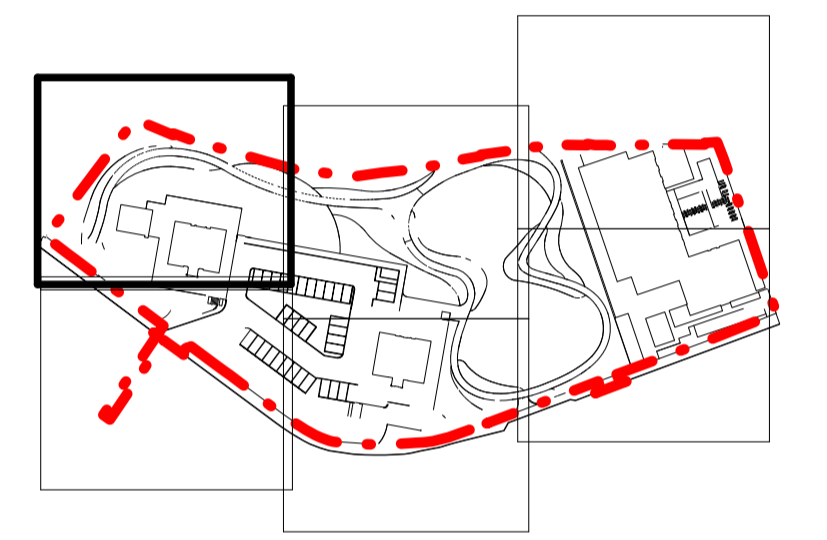
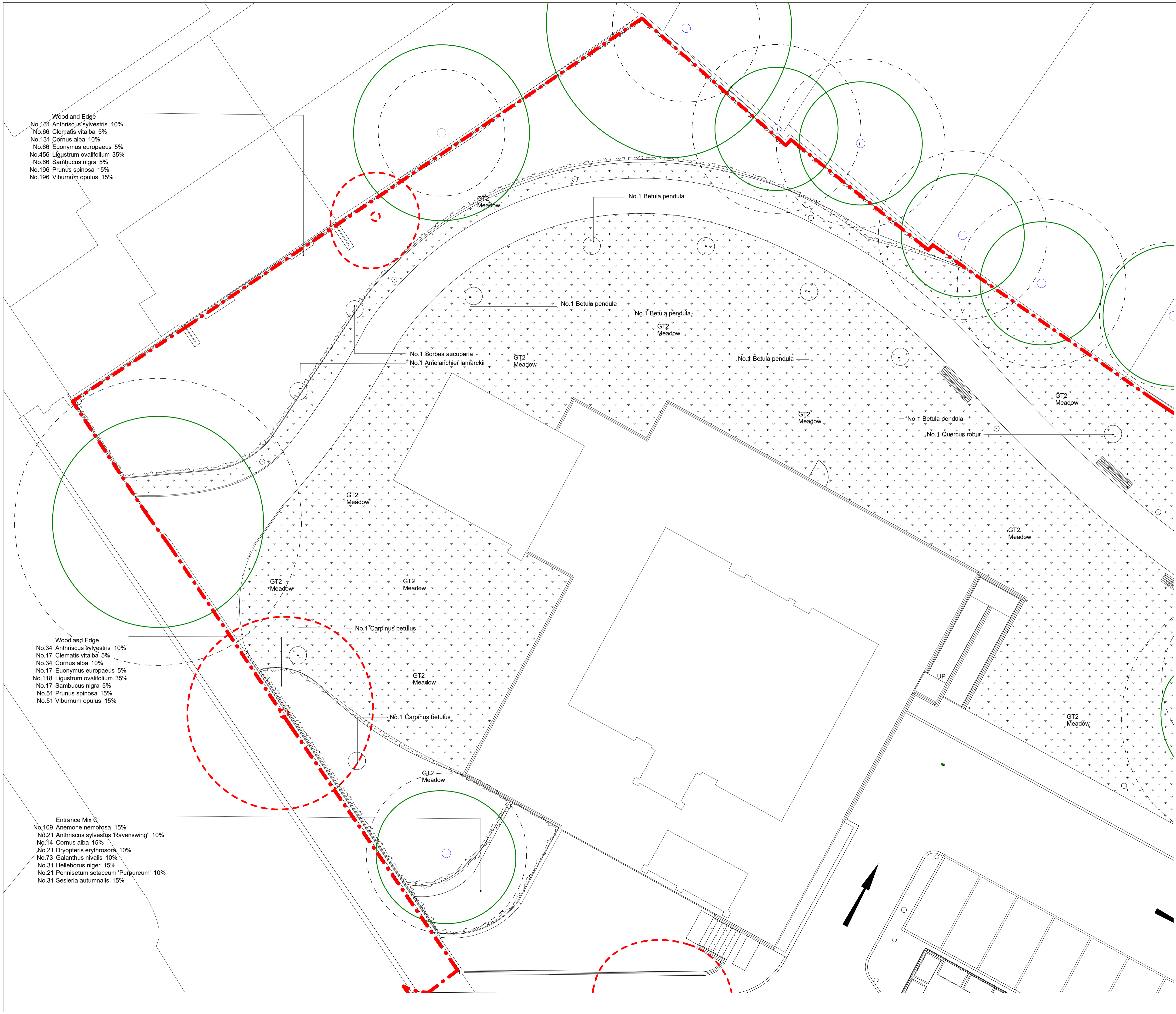


Woodland Edge
 No.131 Anthriscus sylvestris 10%
 No.66 Clematis vitalba 5%
 No.131 Cornus alba 10%
 No.66 Euonymus europaeus 5%
 No.456 Ligustrum ovalifolium 35%
 No.66 Sambucus nigra 5%
 No.196 Prunus spinosa 15%
 No.196 Viburnum opulus 15%

Woodland Edge
 No.34 Anthriscus sylvestris 10%
 No.17 Clematis vitalba 5%
 No.34 Cornus alba 10%
 No.17 Euonymus europaeus 5%
 No.118 Ligustrum ovalifolium 35%
 No.17 Sambucus nigra 5%
 No.51 Prunus spinosa 15%
 No.51 Viburnum opulus 15%

Entrance Mix C
 No.109 Anemone nemorosa 15%
 No.21 Anthriscus sylvestris 'Ravenswing' 10%
 No.14 Cornus alba 15%
 No.21 Dryopteris erythrosora 10%
 No.73 Galanthus nivalis 10%
 No.31 Helleborus niger 15%
 No.21 Pennisetum setaceum 'Purpureum' 10%
 No.31 Sesleria autumnalis 15%



- Notes
1. This drawing is the property of fabrik ltd. It must not be copied or reproduced without written consent.
 2. Only figured dimensions are to be taken from this drawing. All contractors must visit site and be responsible for taking and checking all dimensions related to the works shown on the drawing.
 3. A detailed play strategy will be developed in accordance with residents in line with Condition 14 of 2013/14678/P the Hybrid Planning Consent.
 4. This drawing uses colour. Do not rely on a monochrome copy

No.	Date	Reason	Name
C05	03/03/2022	Planting reverted to pre VE exercise	JC
C04	09/12/2021	Planting updated in accordance with revised budget	JC
C03	08/10/2021	Tree specification added	JC
C02	06/10/2021	Planting VE exercise	JC
C01	07/05/2021	STAGE 5 Issue	JC

fabrik

First Floor
 4-8 Emerson Street
 London
 SE1 9DU

T: 0207 620 1453
 F: 0207 261 9126
 E: london@fabrikuk.com
 W: www.fabrikuk.com

Project
**Abbey Area Phase 02 for
 WATES Construction for the London Borough of Camden**

Drawing
Detailed Soft Landscape Plan Sheet 1 of 6

Scale	Date	Checked	Drawn
As indicated@A1	07/05/21	MB	JC

Drawing No.	Revision
440300 -FAB-S1-XX-DR-L-9301	C05

STAGE 5 CONSTRUCTION