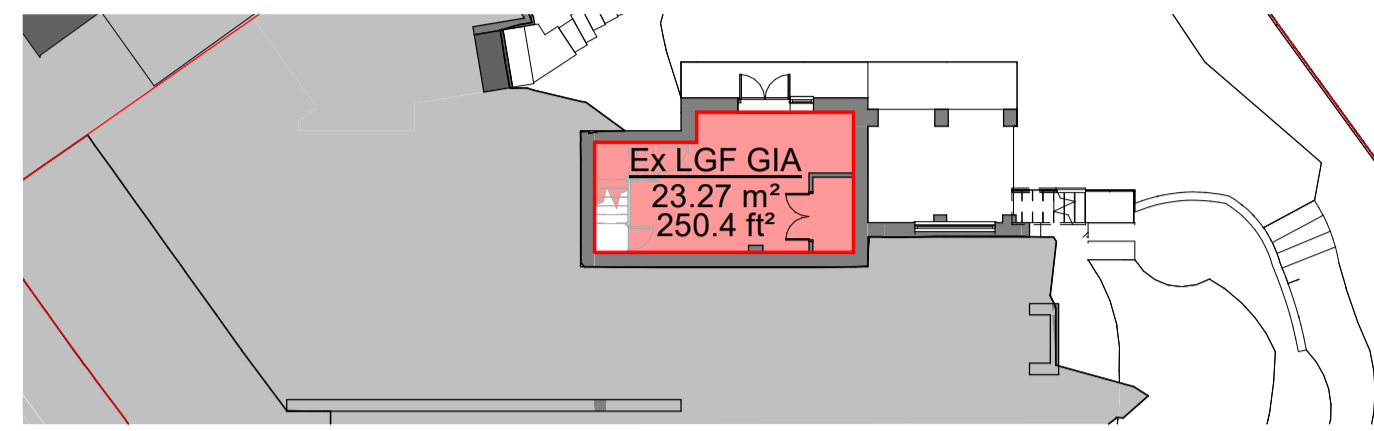


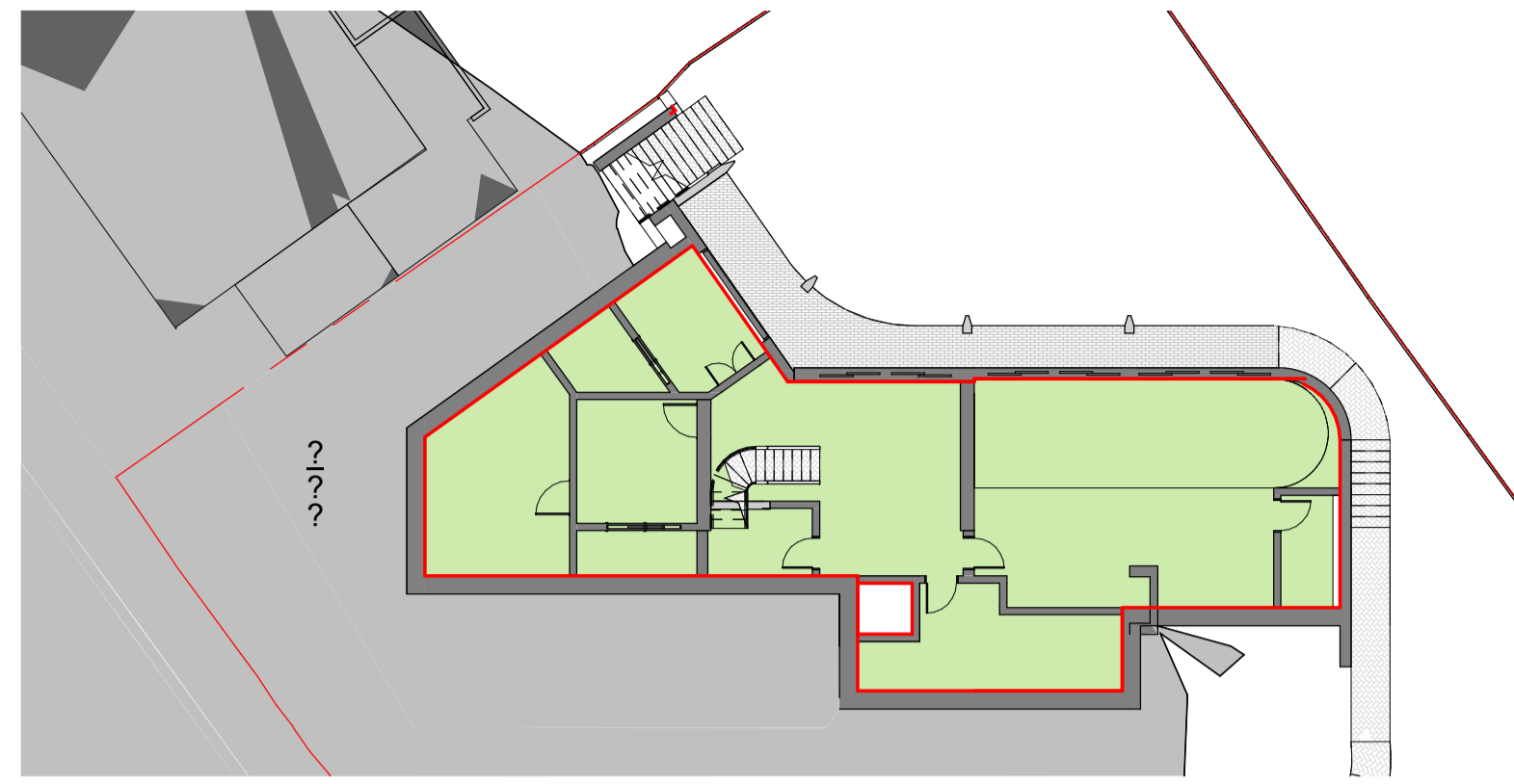
**Notes:**



1 0 1 2 3 4 5  
SCALE 1:100 m



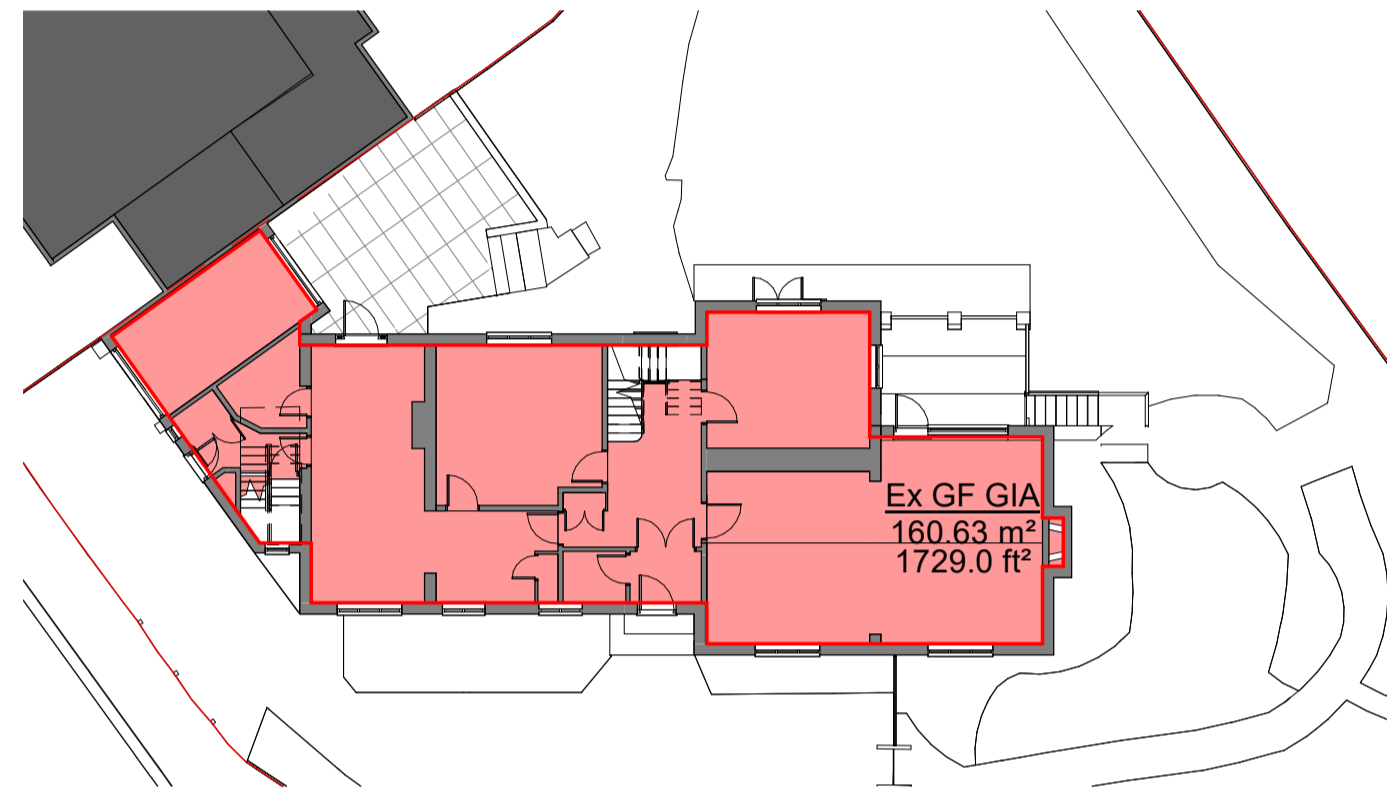
**-1 Lower Ground (EX)**  
1 : 200



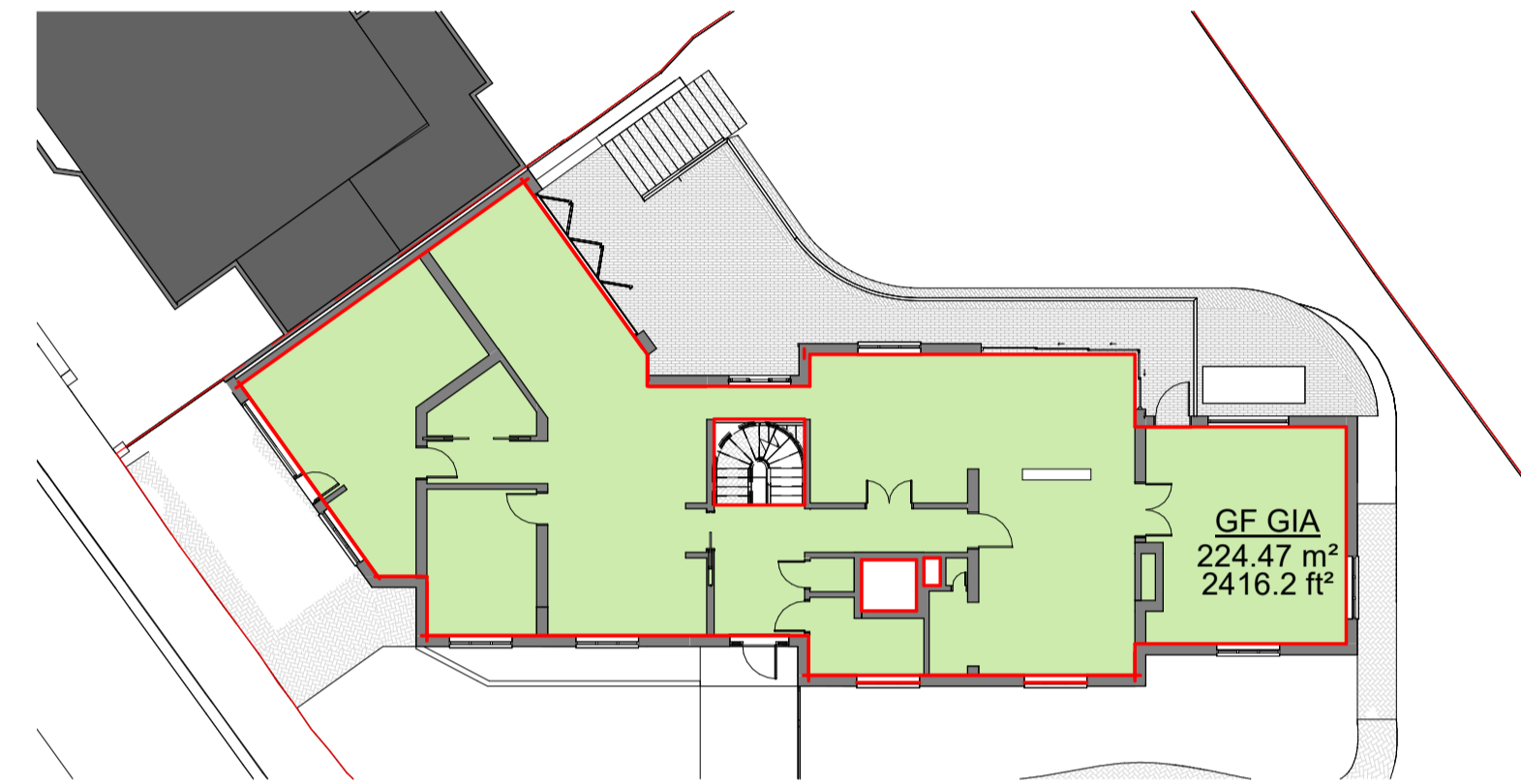
**-1 Lower Ground**  
1 : 200

Existing GIA Totals		
Name	Area	Area SQFT

Ex GF GIA	161 m <sup>2</sup>	1729.0 ft <sup>2</sup>
Ex FF GIA	162 m <sup>2</sup>	1746.2 ft <sup>2</sup>
Ex LGF GIA	23 m <sup>2</sup>	250.4 ft <sup>2</sup>
	346 m <sup>2</sup>	3725.7 ft <sup>2</sup>



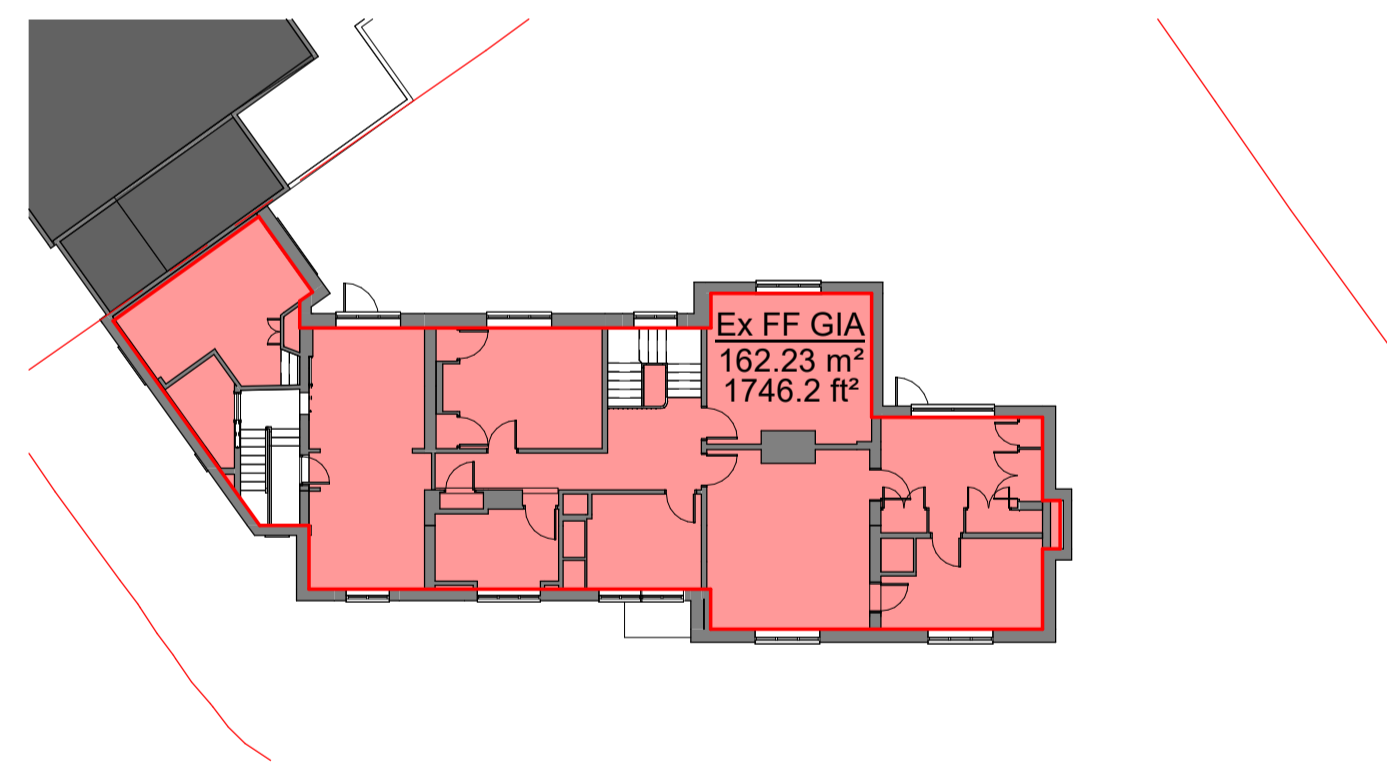
**0 Ground Floor (EX)**  
1 : 200



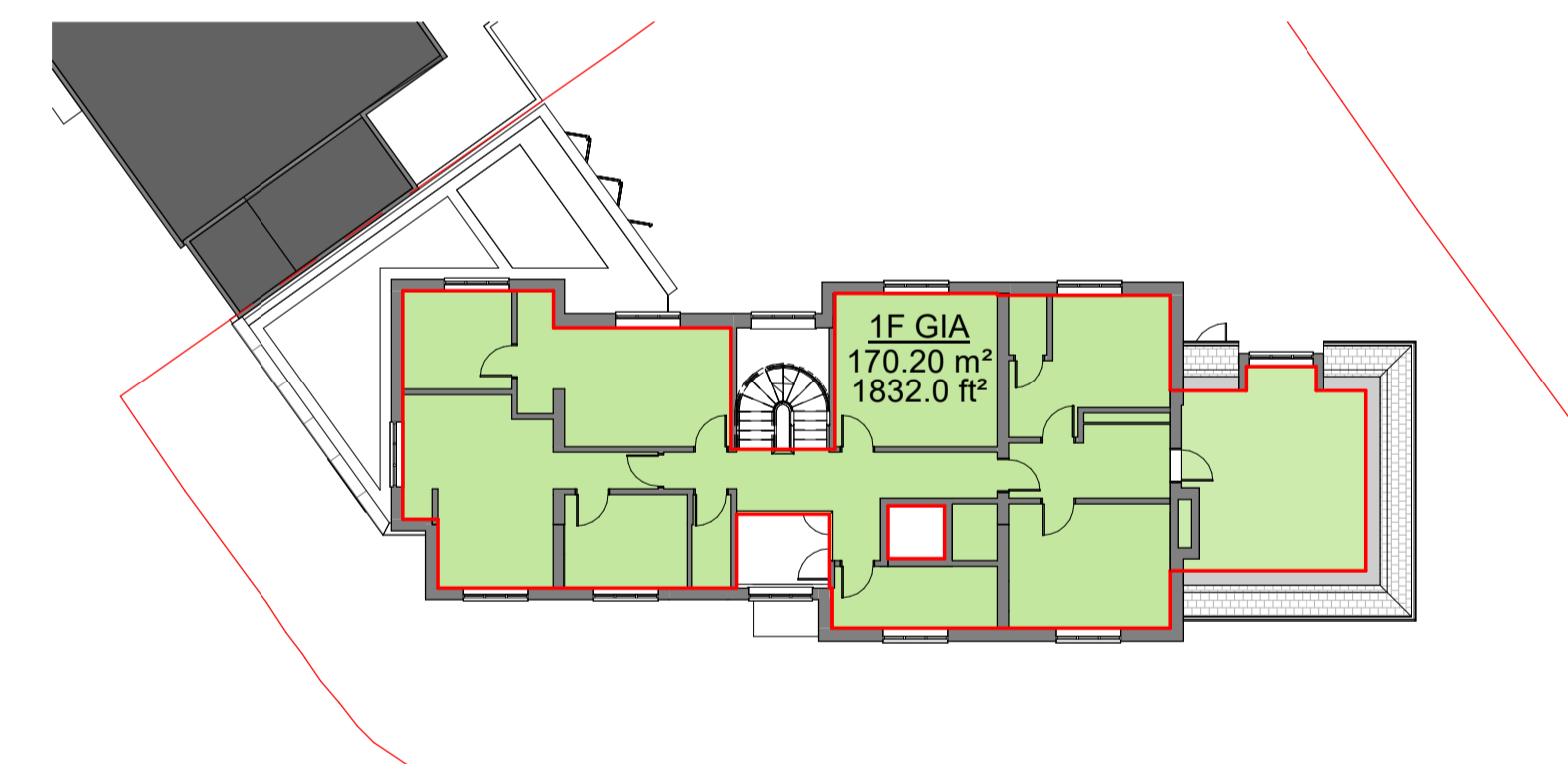
**0 Ground Floor**  
1 : 200

Proposed GIA Totals		
Name	Area SQM	Area SQFT

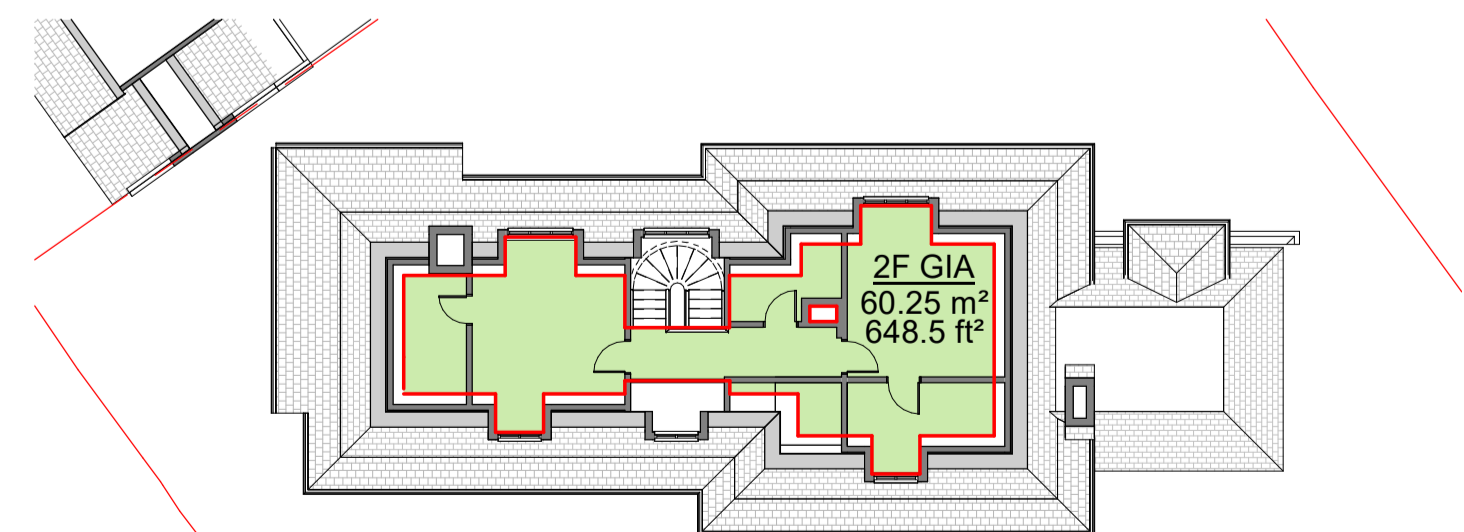
LGF GIA	173.18 m <sup>2</sup>	1864.1 ft <sup>2</sup>
GF GIA	224.47 m <sup>2</sup>	2416.2 ft <sup>2</sup>
1F GIA	170.20 m <sup>2</sup>	1832.0 ft <sup>2</sup>
2F GIA	60.25 m <sup>2</sup>	648.5 ft <sup>2</sup>
	628.10 m <sup>2</sup>	6760.8 ft <sup>2</sup>



**1 First Floor (EX)**  
1 : 200



**1 First Floor**  
1 : 200



**2 Second Floor (1800 cut)**  
1 : 200

Rev	Description	Date	Drawn	Chk'd
0	First Issue	25.05.22		



16 lambton place  
notting hill  
london w112sh  
t 02072293125  
f 02072293257  
e info@wolffarchitects.co.uk

status:

**PLANNING**

project:  
**12 Pilgrim's Lane  
Hampstead, London**

drawing title:  
**Existing and Proposed  
Areas**

date: **11/19/21** scale: **1 : 200**

dwg no: **2160-PL-715** rev no: **0**