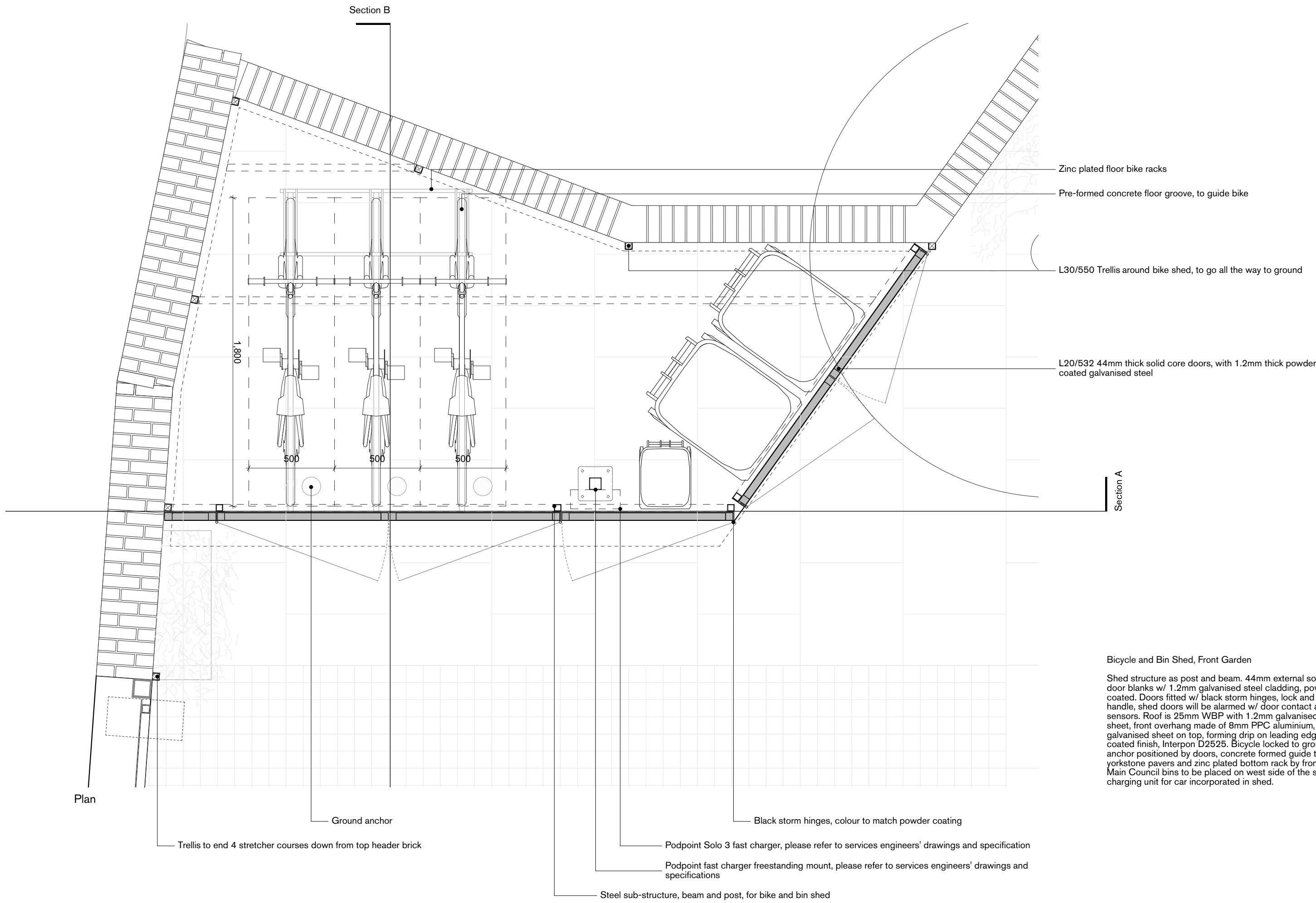
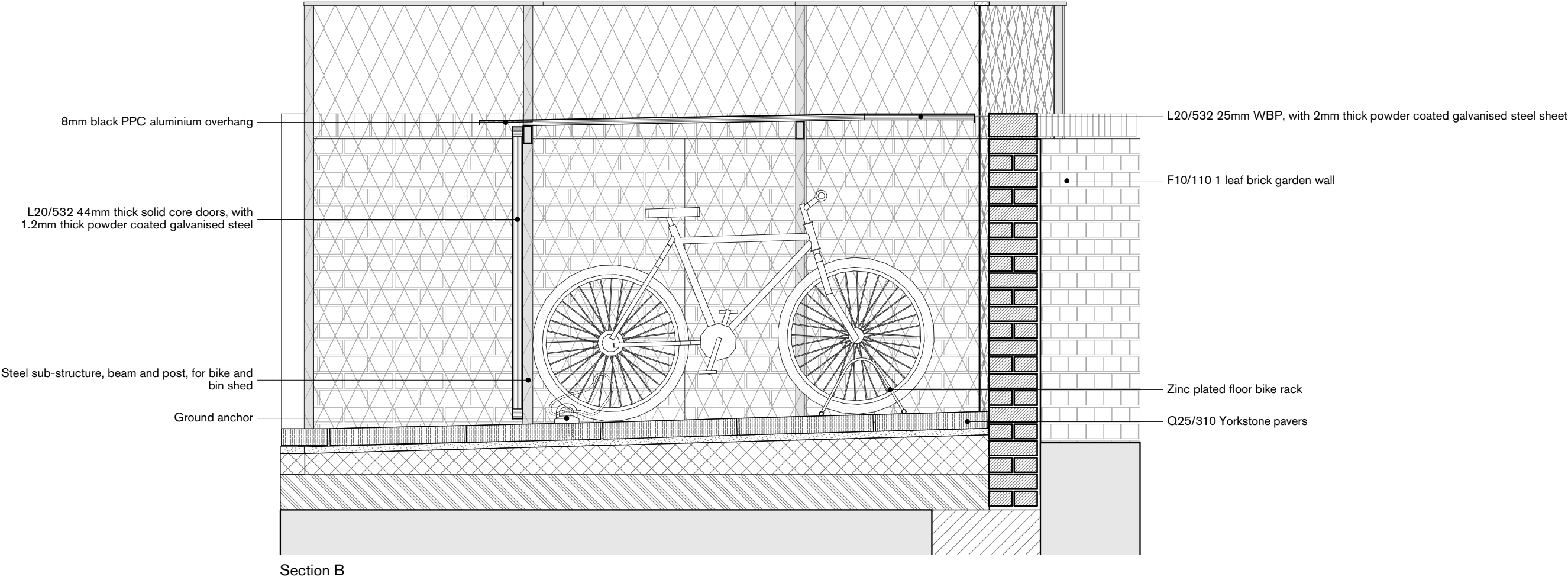
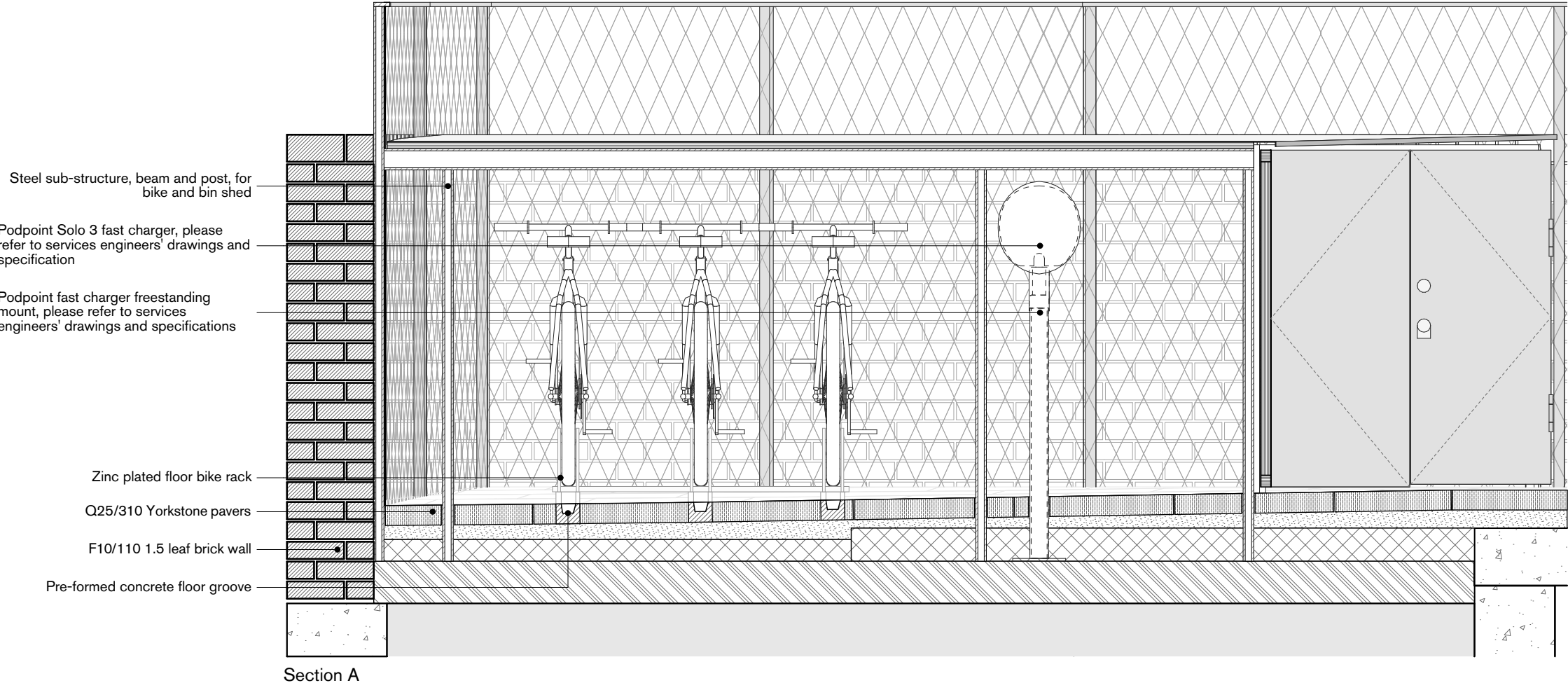
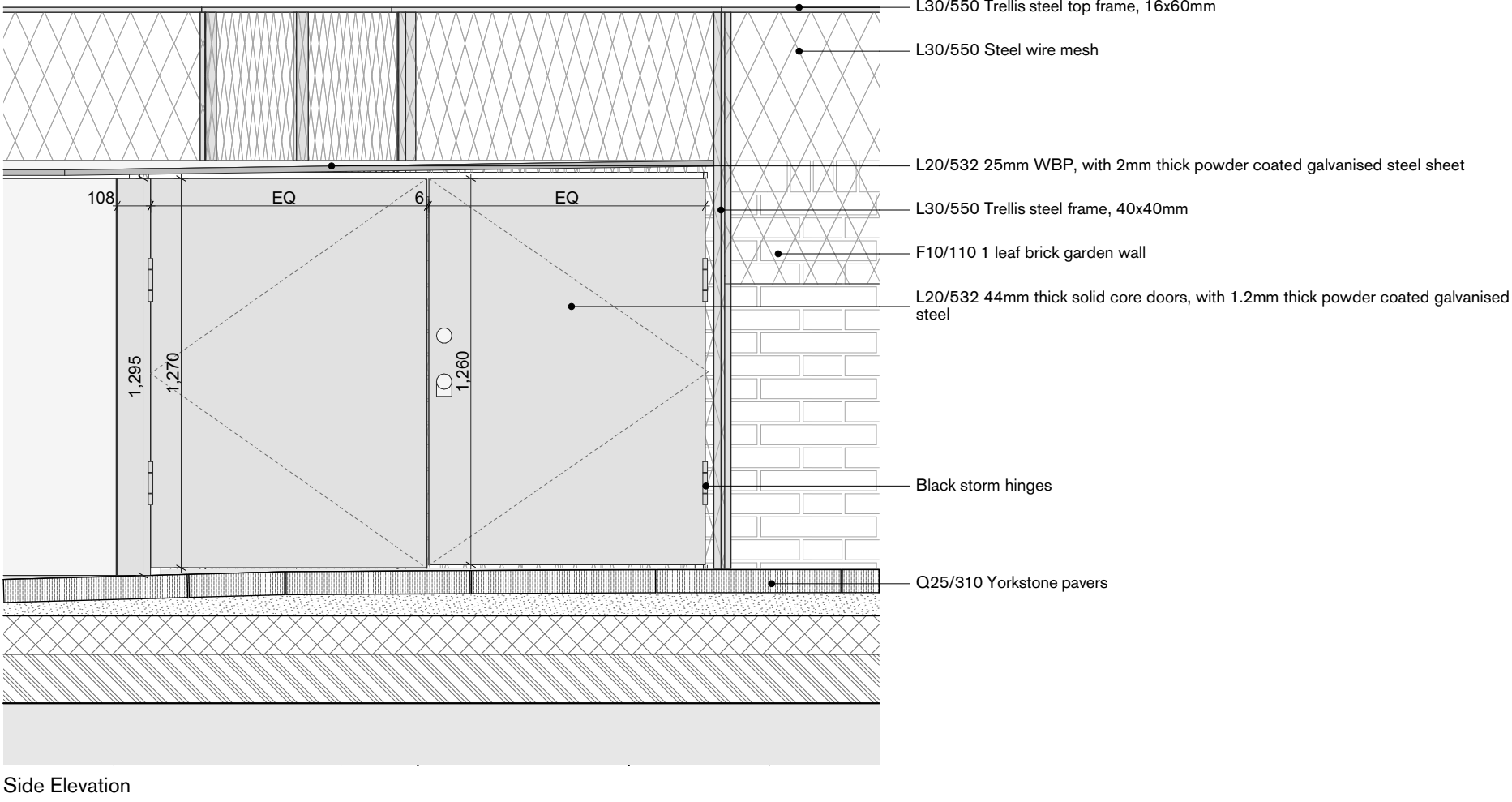
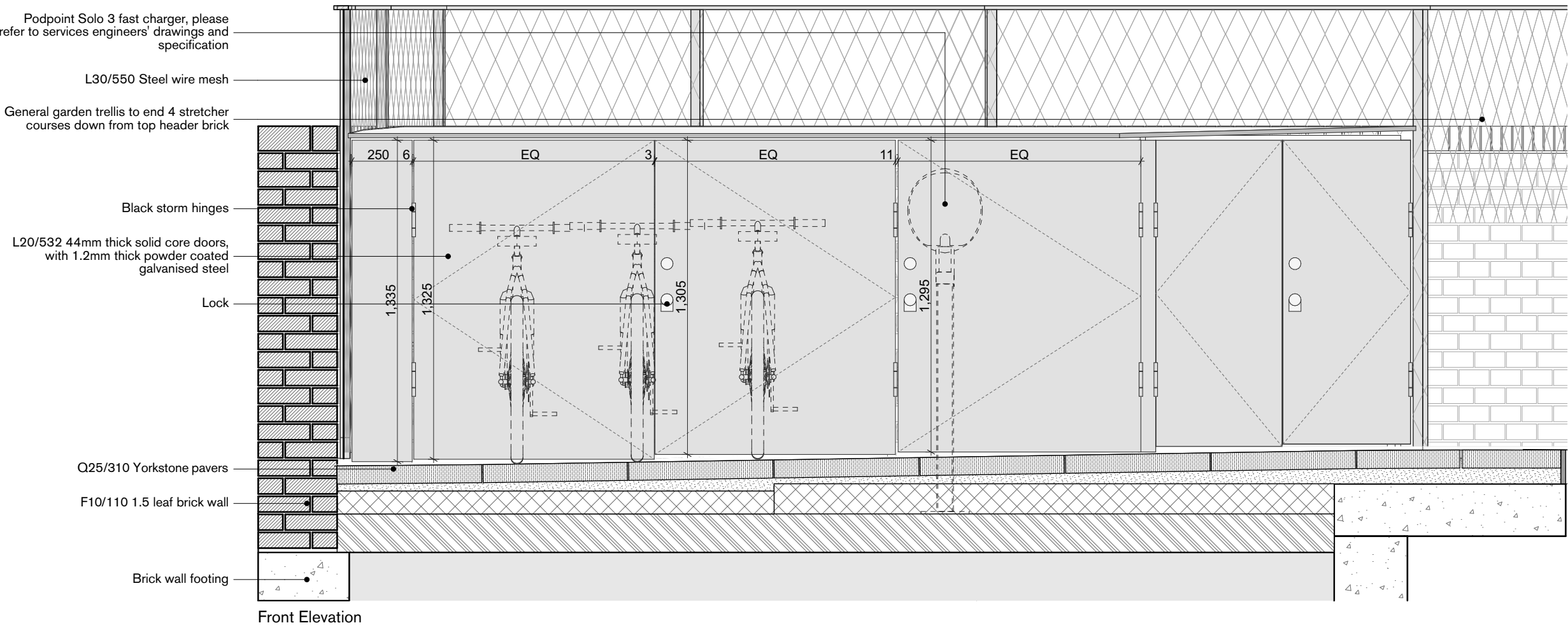


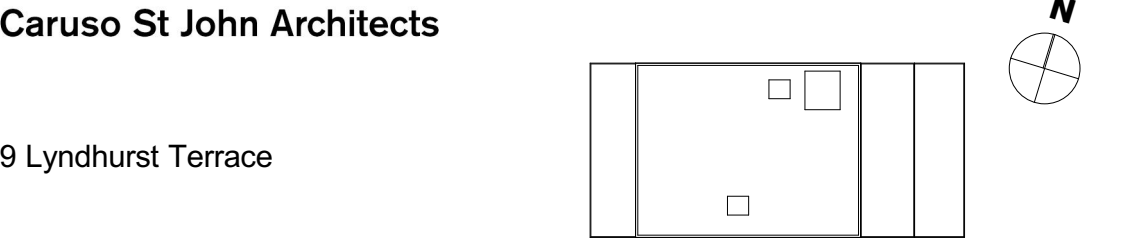
General notes:  
All dimensions are approximate and subject to a full measured survey  
All drawings to be read in conjunction with Structural Engineers and Services Engineers drawings. Any discrepancies are to be highlighted and brought to the attention of the Architects.

Notes:



Bicycle and Bin Shed, Front Garden  
Shed structure as post and beam, 44mm external solid-core door blanks w/ 1.2mm galvanised steel cladding, powder coated. Doors fitted w/ black storm hinges, lock and pull handle, shed doors will be alarmed w/ door contact and PIR sensors. Roof is 25mm WBP with 1.2mm galvanised steel sheet, front overhang made of 8mm PPC aluminium, with 1.2m galvanised sheet on top, forming drip on leading edge. Powder coated finish, Interpon D2525. Bicycle locked to ground anchor positioned by doors, concrete formed guide track set in yorkstone pavers and zinc plated bottom rack by front wheel. Main Council bins to be placed on west side of the shed. Fast charging unit for car incorporated in shed.

INDEX	DATE	REVISION
T00	10.06.22	Tender Information
T01	08.07.22	Tender Information



Bicycle and Bin Storage & Trellis Assembly Suitable for Tender

474	CSJ	00	GF	DE	A	7951	D2	T01
Project No.	Author	Unit	Level	Type	Discipline	Number	Status	Revision
1:20	841 x 594	10.06.22	08.07.22	CC	CC			
Scale	Size W x H (mm)	Date	Revised	Drawn	Checked			
Stage 4								±0.00 = #99.25 AOD
Project phase								Project datum

Client:  
David Smith and Pushpa Gulhane  
London, NW3 5QA

Architect:  
Caruso St John Architects LLP  
1 Coate Street, London E2 9AG, UK, +44 (0)20 7613 3161, london@carusostjohn.com