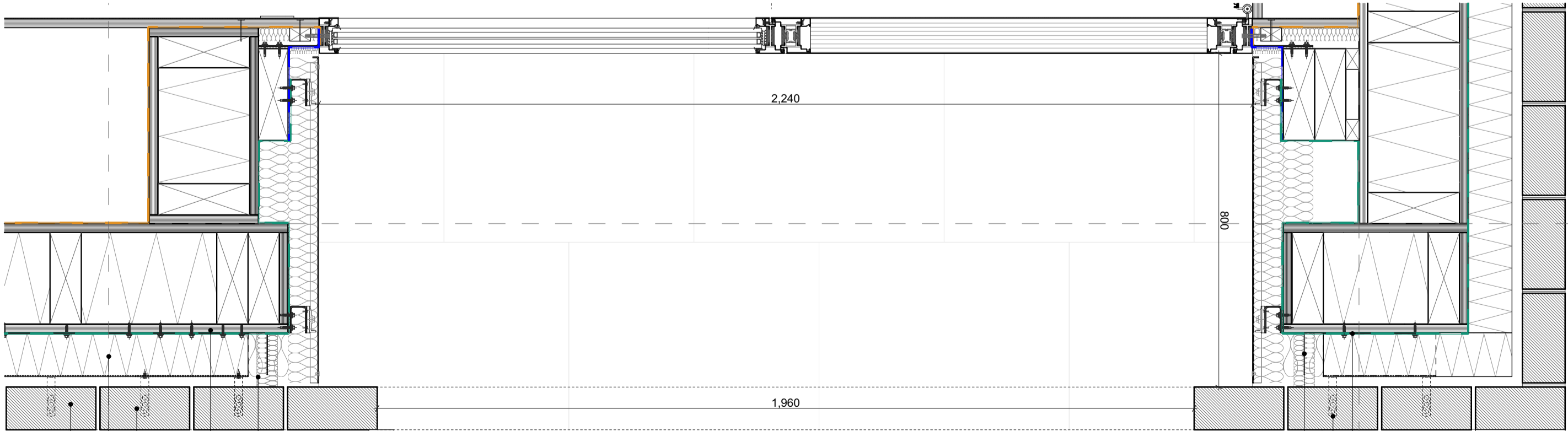
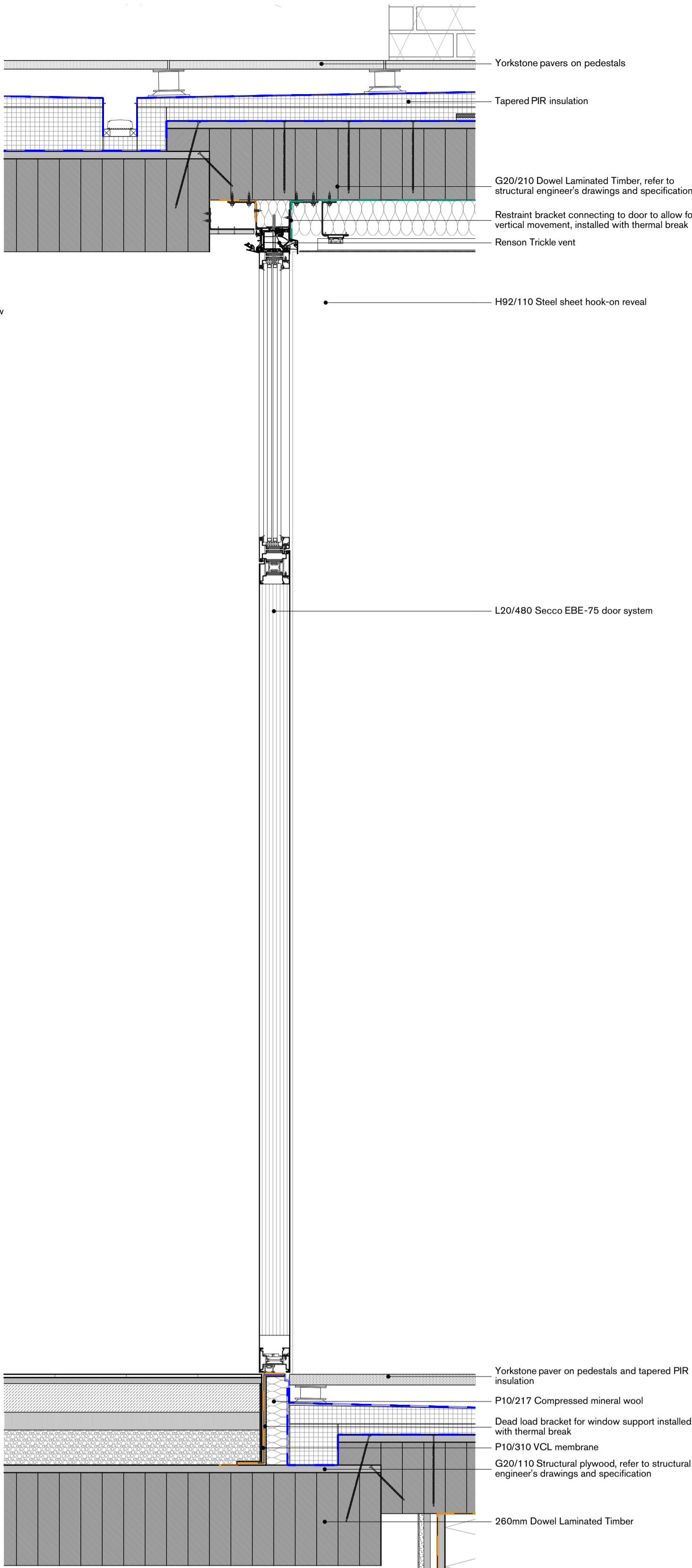


Elevation



Plan



Section

General notes:
All dimensions are approximate and subject to a full measured survey
All drawings to be read in conjunction with Structural Engineers and Services Engineers drawings. Any discrepancies are to be highlighted and brought to the attention of the Architects.

Notes:

INDEX	DATE	REVISION
T00	13.07.22	Tender Information

Caruso St John Architects

9 Lyndhurst Terrace

Typical Entrance Door Assembly Suitable for Tender

474	CSJ	00	ZZ	DE	A	7283	D2	T00
Project No.	Author	Unit	Level	Type	Discipline	Number	Status	Revision
1:10	841 x 594	220713				CC	CC	
Scale	Size W x H (mm)	Date	Revised	Drawn	Checked	±0.00 = #99.25 AOD		
Stage 4							Project datum	

Client:
David Smith and Pushpa Gulhane
London, NW3 5QA

Architect:
Caruso St John Architects LLP
1 Coate Street, London E2 9AG, UK, +44 (0)20 7613 3161, london@carusostjohn.com

Type A External door
Secoco System EBE-75 single leaf outward opening hinged door, 86mm galvanised steel frame, and a fixed screen
Secoco System OS2-75, all powder coated Interpon D2525.
Triple glazed unit u-value 1.3 W/(m²K). Door blank clad externally with hammered steel sheet, finish to match frame, and timber lined on the inside, ash veneer, painted Little Green Portland Stone. Security rating, RC3