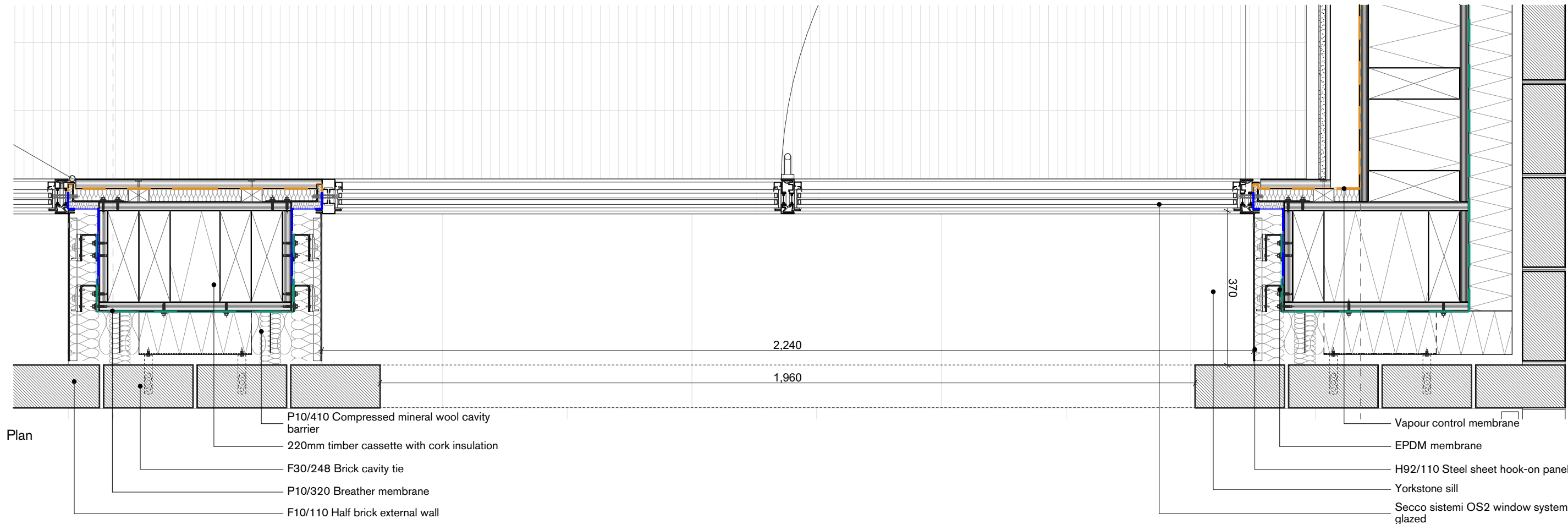
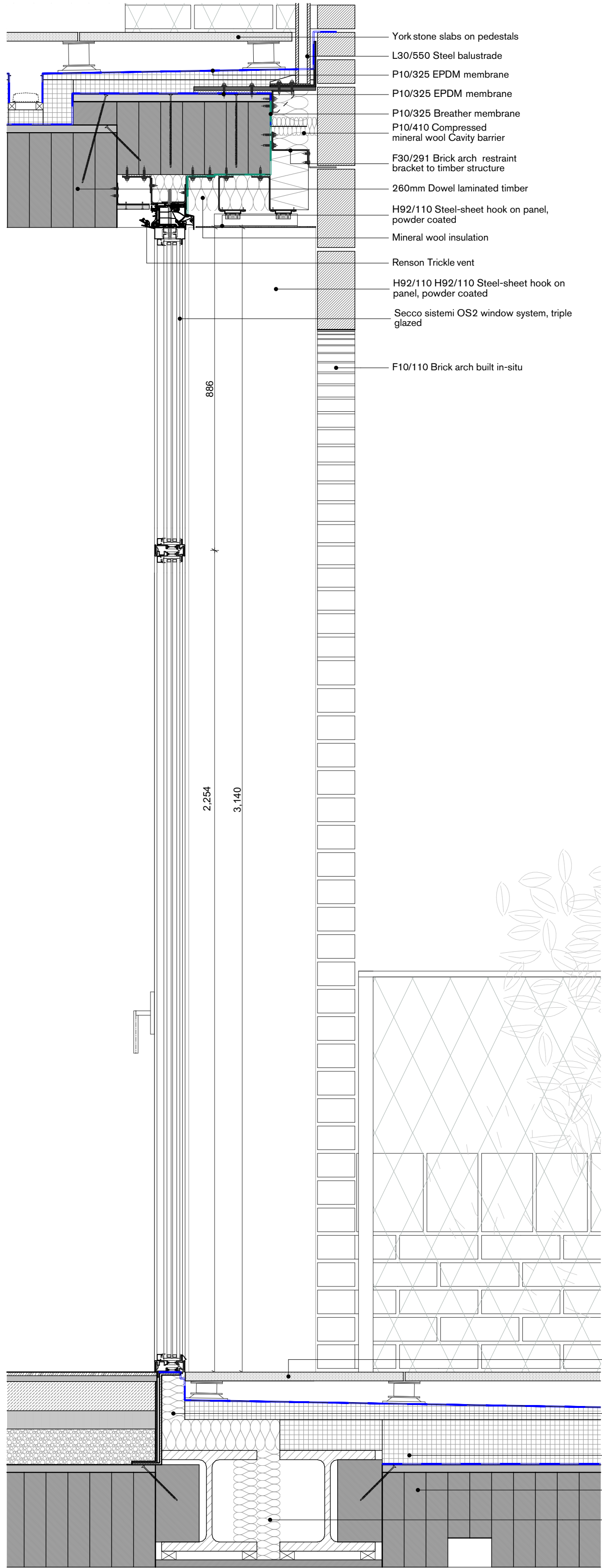


Elevation



Plan



Section

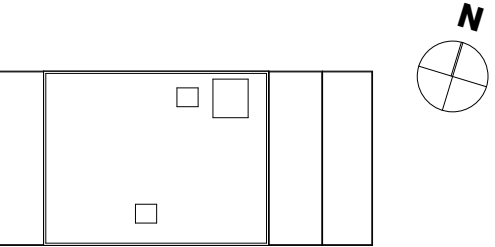
General notes:
All dimensions are approximate and subject to a full measured survey
All drawings to be read in conjunction with Structural Engineers and Services Engineers drawings. Any discrepancies are to be highlighted and brought to the attention of the Architects.

Notes:

INDEX	DATE	REVISION
T00	13.07.22	Tender Information

Caruso St John Architects

9 Lyndhurst Terrace



Typical Terrace Door Assembly

Suitable for Tender

474	CSJ	00	ZZ	DE	A	7282	D2	T00
Project No.	Author	Unit	Level	Type	Discipline	Number	Status	Revision
1:10	841 x 594	220713				CC	CC	
Scale	Size W x H (mm)	Date	Revised	Drawn	Checked			
Stage 4								±0.00 = #99.25 AOD
Project phase								Project datum

Client:
David Smith and Pushpa Gulhane
London, NW3 5QA

Architect:
Caruso St John Architects LLP
1 Coate Street, London E2 9AG, UK, +44 (0)20 7613 3161, london@carusostjohn.com

Type D Two fixed and one Inwards opening single leaf terrace door
Secco System OS2-75 tilt & turn window, 84mm galvanised steel frame, powder coated Interpon D2525. Triple glazed unit u-value 1.3 W/(m²K). Security rating: RC3