

General notes:
All dimensions are approximate and subject to a full measured survey
All drawings to be read in conjunction with Structural Engineers and Services Engineers drawings. Any discrepancies are to be highlighted and brought to the attention of the Architects.

Notes:

INDEX	DATE	REVISION
T00	13.07.22	Tender Information

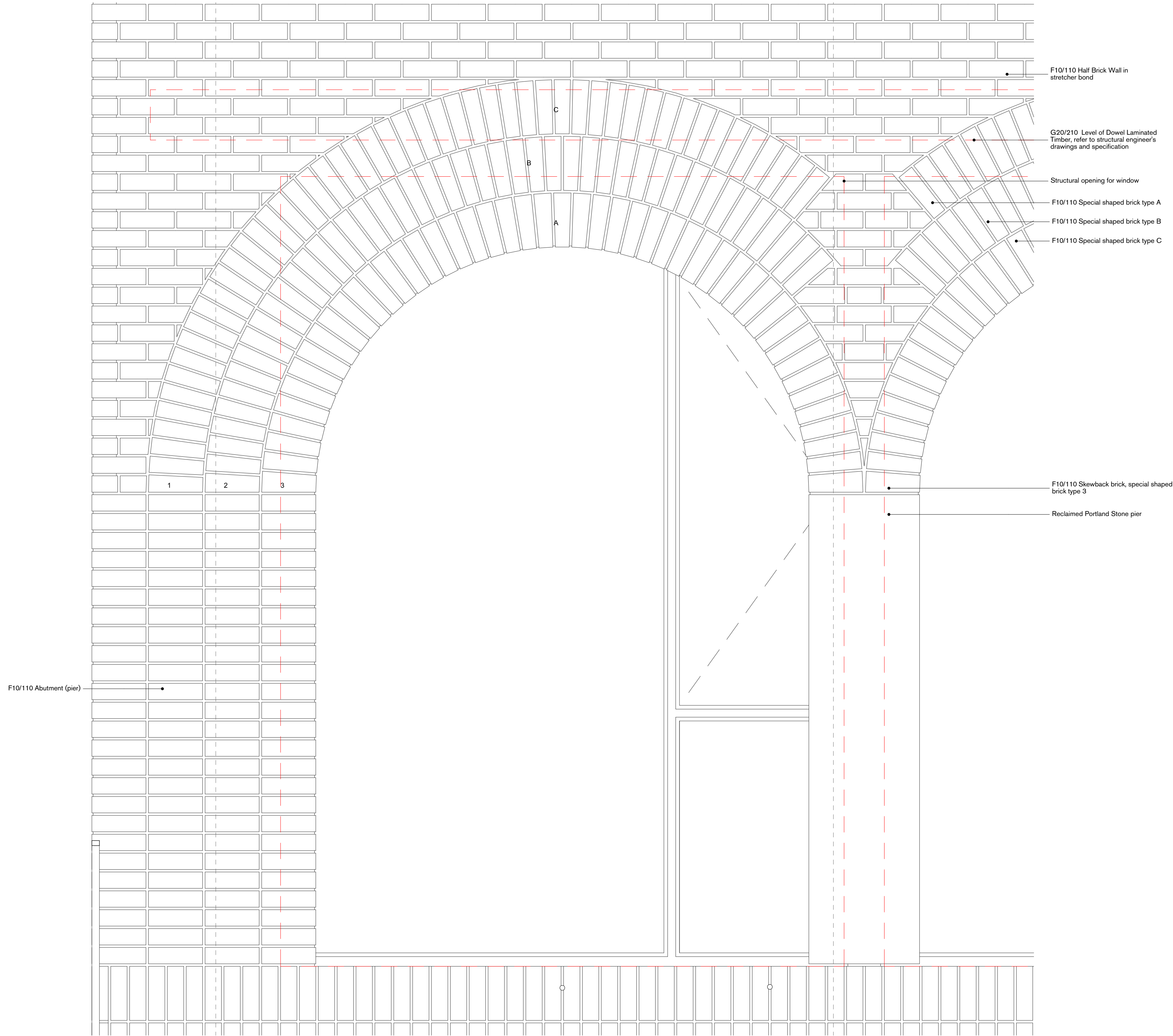
Caruso St John Architects

9 Lyndhurst Terrace

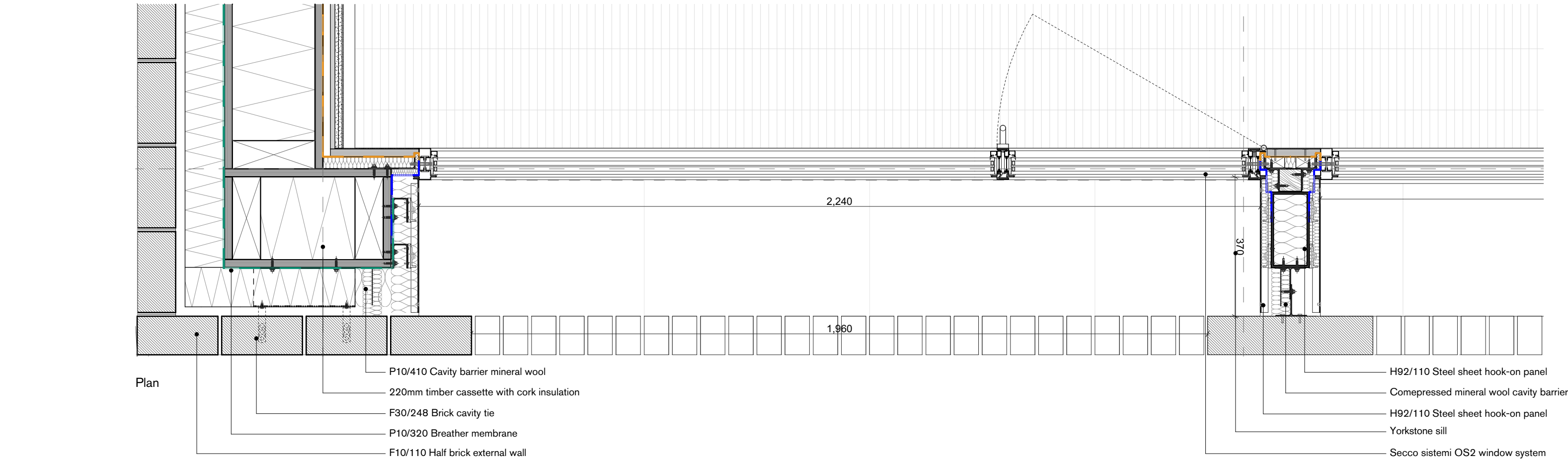
Typical Window Assembly

Suitable for Tender

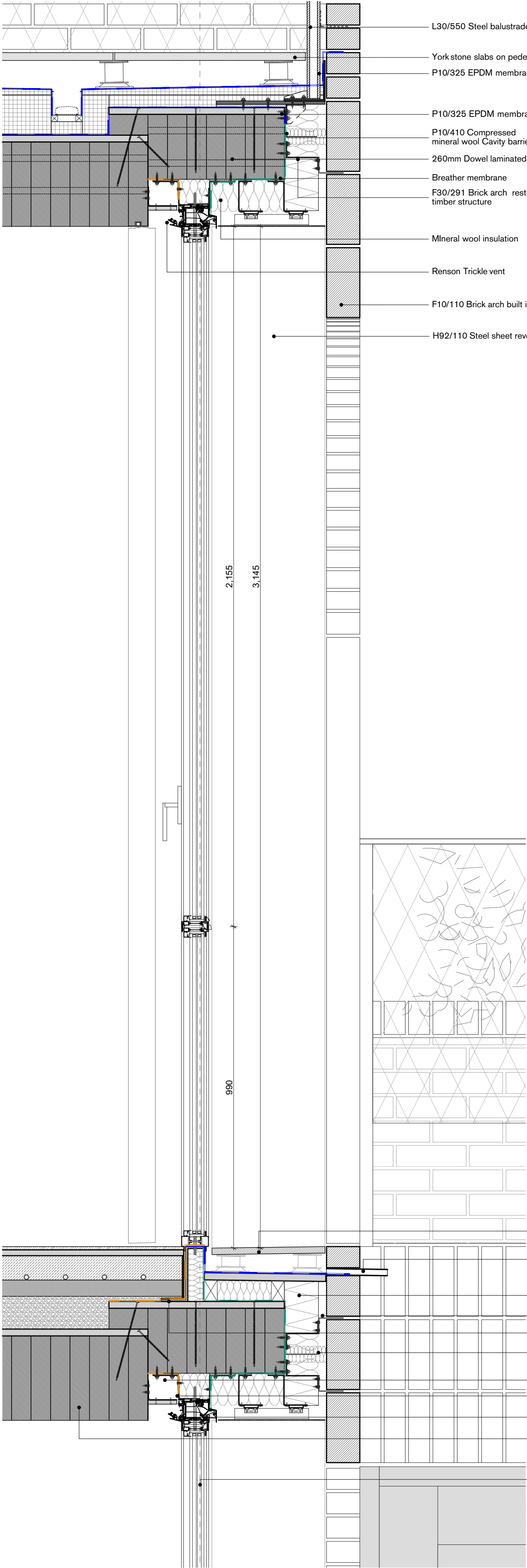
474	CSJ	00	ZZ	DE	A	7281	D2	T00
Project No.	Author	Unit	Level	Type	Discipline	Number	Status	Revision
1:10	841 x 594		220713			CC	CC	
Scale	Size W x H (mm)		Date			Revised	Drawn	Checked
Stage 4							±0.00 = #99.25 AOD	
Project phase						Project datum		



Elevation



Plan



Section

Typical Window Type A Two fixed and one single leaf inward opening hinged window
Secco System OS2-75 inward opening hinged window, 84mm galvanised steel frame, powder coated Interpon D2525, Triple glazed unit u-value 1.3 W/(m²K). Security rating: RC3