

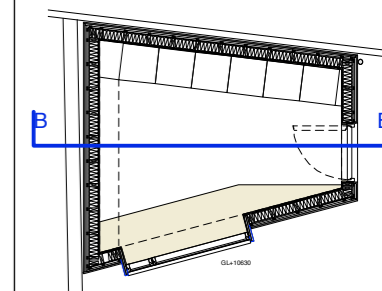
1. THIS DRAWING IS COPYRIGHT
 2. DO NOT SCALE. WORK TO FIGURED DIMENSIONS ONLY
 3. THE CONTRACTOR MUST CHECK ALL DIMENSIONS AND LEVELS ON SITE AND CONFIRM WITH ARCHITECT BEFORE PROCEEDING.
 EXISTING LEVELS \blacklozenge ← NEW LEVELS \blacklozenge ←
 4. DISCREPANCIES BETWEEN THE DRAWING AND THE SPECIFICATIONS MUST BE REPORTED TO THE ARCHITECT BEFORE PROCEEDING.
 5. FOR DETAILS OF STRUCTURE, REFER TO ENGINEER'S DRAWINGS AND SPECIFICATIONS

REVISIONS / NOTES:

0.0 0.3 0.5 0.8 M

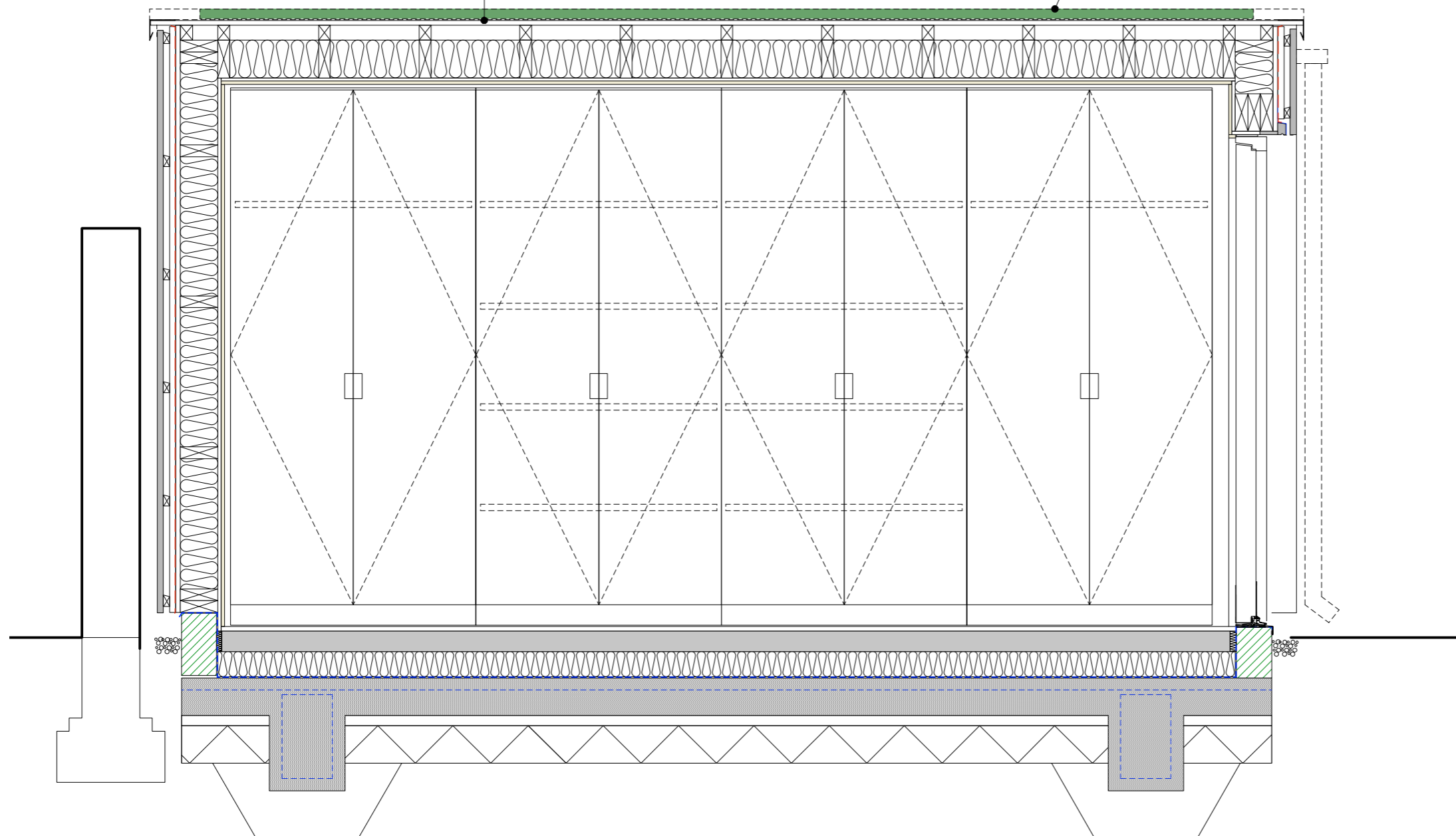


Scale 1:20 @ A3



GRP roof to falls - 185 GRP roofing system by Polyroof - with min. 10 year guarantee (top coat polybase and polymat450) on 18mm OSB3 Tongue & Groove board on Furrings to create falls and 50mm ventilation zone with gaps for cross ventilation on Joists to SE details (150x47, C24, 400mm ctrs) with 150mm Kingspan Kooltherm K7 Pitched Roof Board tightly packed between rafters

EnviroMat® Sedum Extensive Green Roof Blanket, 35-50mm thick Available from <https://www.turfonline.co.uk/> ON SDF Mat drainage layer for shallow pitch roofs W/ 40mm Aluminium edge trim



1 Section BB
 Scale: 1:20

Proctor & Shaw

The Studio, 78 Sisters Avenue,
 SW11 5SN, London
 +44 (0)208 244 6110 www.proctorandshaw.com

PROJECT NO. PROJECT
2006 11 Highgate West Hill,
 N6 6JR

Garden Room Section
 BB 1:20 @ A3

DRWG. NO. REV.
P.04 -