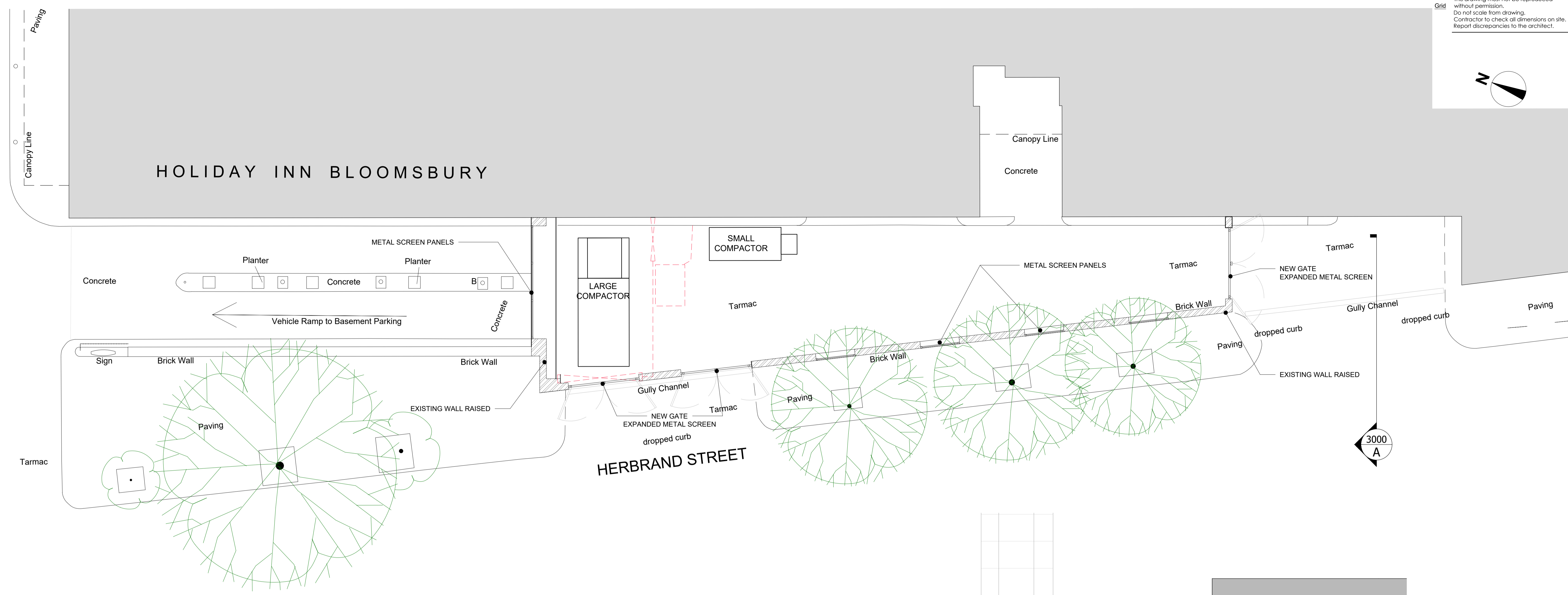
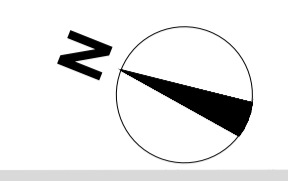


This drawing must not be reproduced without permission. Do not scale from drawing. Contractor to check all dimensions on site. Report discrepancies to the architect.



1 GROUND FLOOR PLAN
Scale: 1:100

| | | |
|-----|--------------------------------|----------|
| 02 | 01/07/2022 | RvW |
| • | Reinstate end gate | Planning |
| 01 | 16.06.2022 | RvW |
| * | Remove end gate to refuse area | |
| rev | amendments | date by |

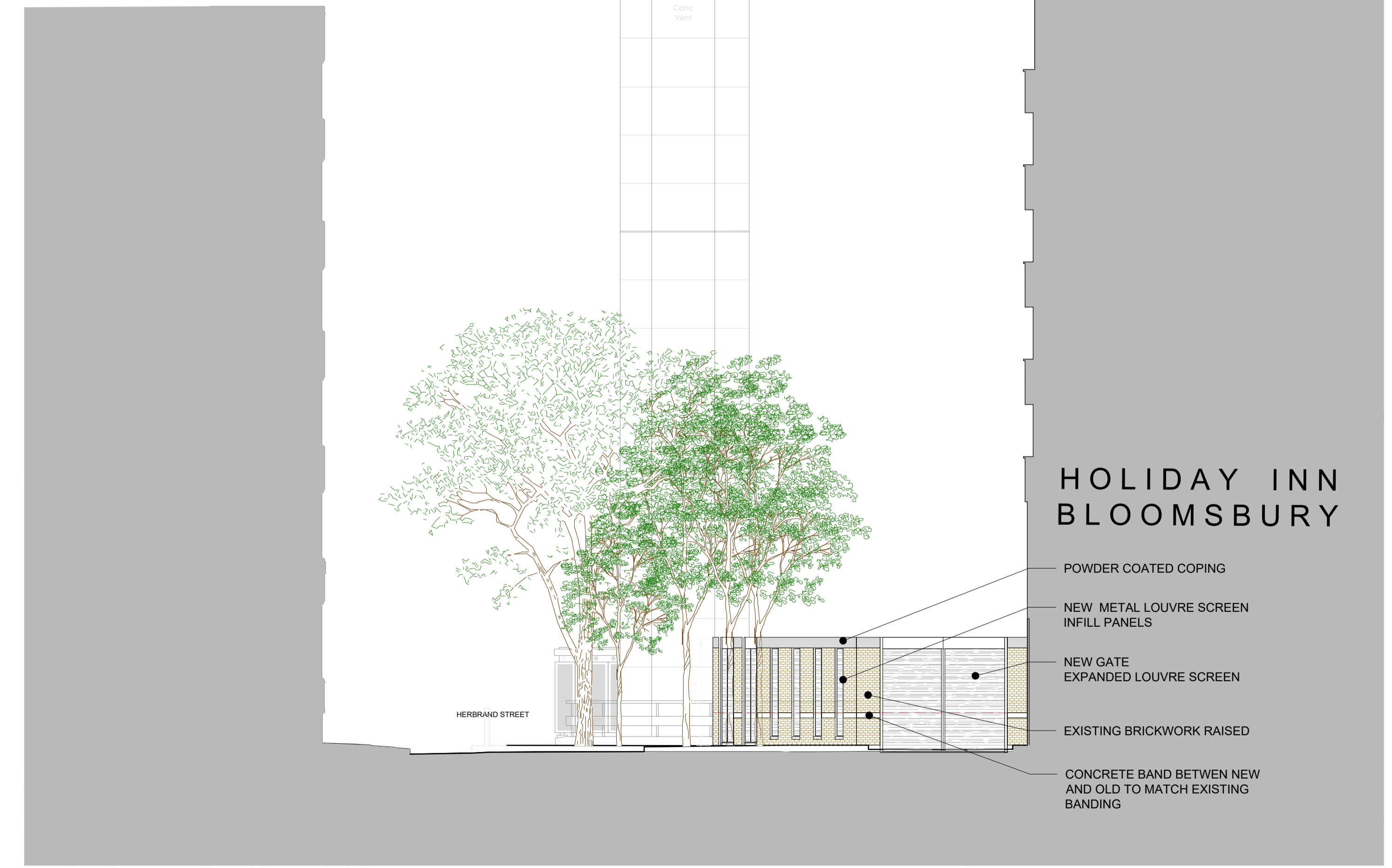
architects
ipa
55 Kingstown Street
London NW1 8JP
T + 44 (0) 20 7436 1133
W ipa-architects.com

Project
HOLIDAY INN BLOOMSBURY
CORAM STREET
LONDON
WC1N 1HT

Drawing Title
PROPOSED ALTERATIONS
REFUSE AREA HERBRAND ST
GROUND FLOOR PLAN
SECTION -A-

Drawing Status
PLANNING

| | | | |
|--|--------------|------------|-----|
| Date | 26.04.2022 | Drawn by | RvW |
| Scale | A1 @ 1:100 | A3 @ 1:200 | |
| Drawing No. | 22021.LO.100 | Rev | 02 |
| Cad File | 22021.EX.100 | | |
| © IPA Architects. All rights reserved. | | | |



2 SECTION -A- (LOOKING NORTH ON HERBRAND ST)
Scale: 1:100

