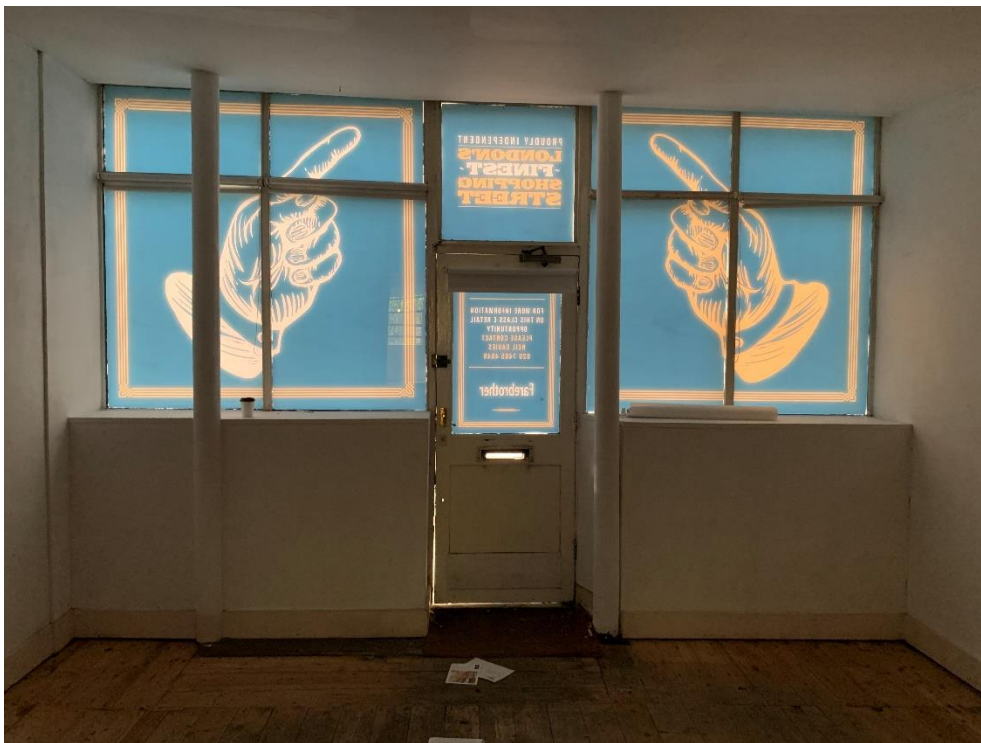


59 Lambs Conduit Street, WC1



1. Front elevation (no works intended)



2. Shopfront internally



3. Party wall with No.57 (chimney breast no longer present)



4. Ground floor facing towards rear - partition to right hand side adjoins common parts and is location where staircase is to be re-introduced.



5. Rear part of shop, door to rear courtyard and WC and hatch to basement.



6. Basement chimney breast prior to demolition



7. Fracture to chimney breast return prior to demolition



8. Basement chimney breast post partial demolition



9. Salvaged brickwork from chimney breast



10. Remains of redundant staircase between basement and ground floor



11. Remains of redundant staircase between basement and ground floor



12. General basement view



13. General basement view



14. Rear lightwell window from inside basement



15. Timber tread / brick stair at basement level with access hatch to ground floor



16. Rear Lightwell



17. Rear lightwell window



18. Rear Courtyard. Lightwell adjacent to rear elevation.

59 Lambs Conduit Street, WC1



19. Main rear elevation above rear addition



20. Rear addition rear elevation

59 Lambs Conduit Street, WC1



21. Disused external WC

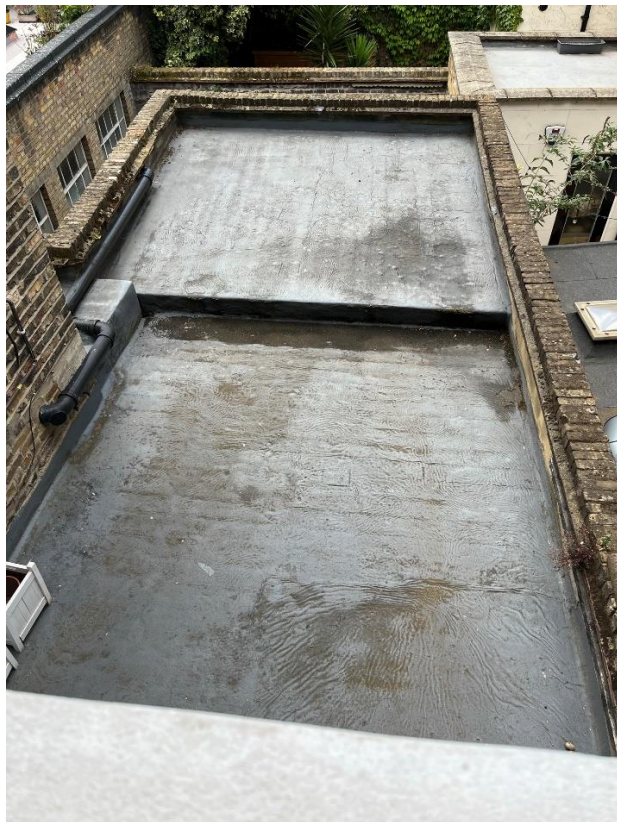


22. Rear Courtyard / rear addition

59 Lambs Conduit Street, WC1



23. Flat roof over rear addition and main rear elevation



24. Rear addition flat roof