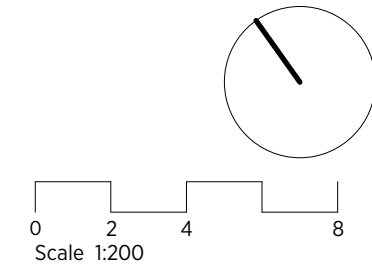
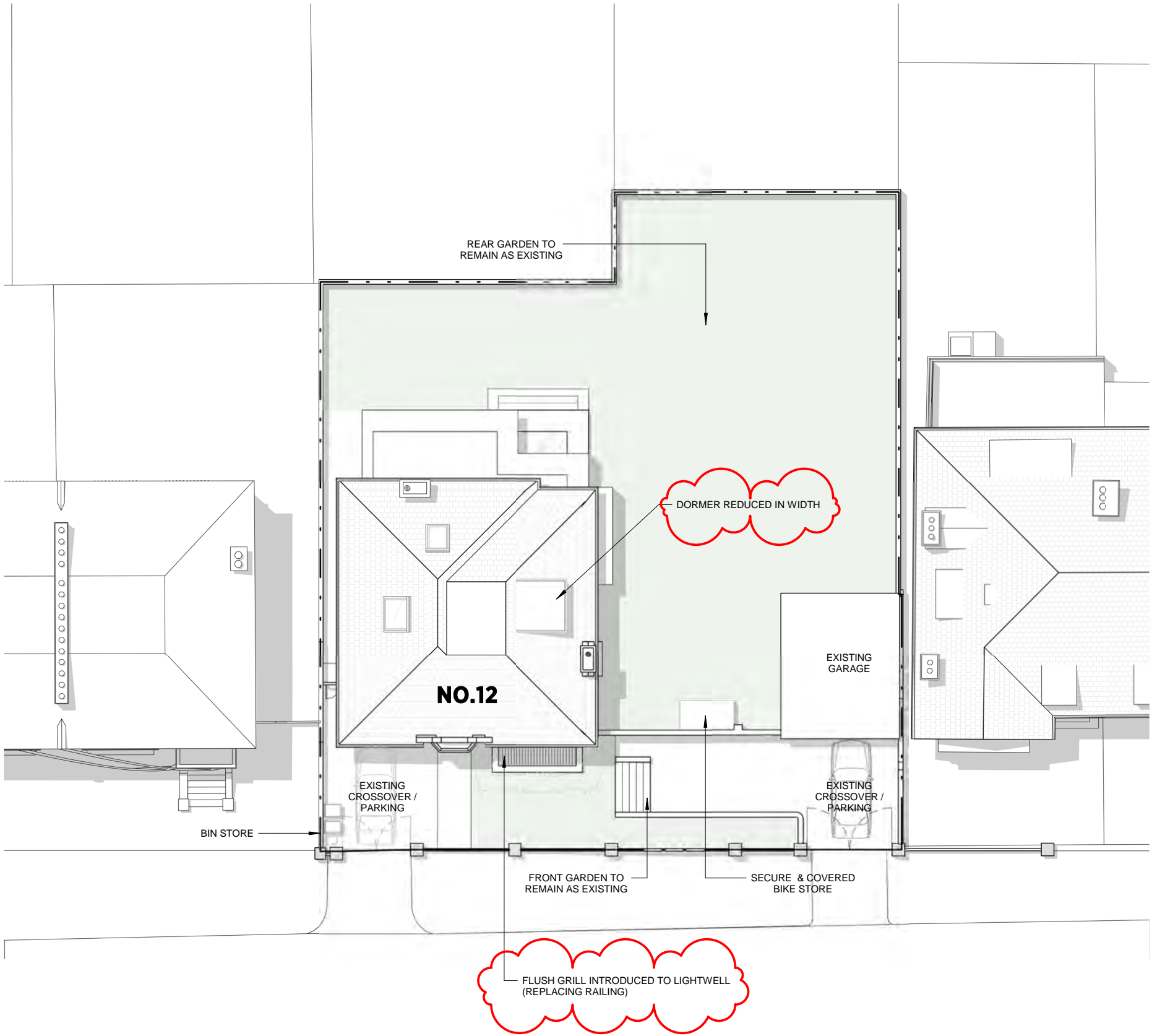


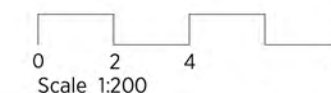
GENERAL NOTES:  
This drawing is copyright of KSR architects.  
This drawing must be read in conjunction with the Designer's Risk Assessment, specification and all other relevant documentation and drawings.  
KSR architects accept no liability for any expense, loss or damage of whatsoever nature and however arising from any variation made to this drawing or in the execution of the work to which it relates which has not been referred to them and their approval obtained.  
Areas are based on unchecked survey and are approximate only.  
Do not scale from this drawing or the digital data, only figured dimensions are to be used. Refer to linear scale for guidance.  
Check all dimensions on site prior to carrying out any works and advise any discrepancy



**KSR** ARCHITECTS & INTERIOR DESIGNERS  
KSR Architects LLP  
14 Greenland Street  
London NW1 0ND  
mail@ksrarchitects.com  
t: +44 (0)20 7692 5000  
www.ksrarchitects.com

12 Eldon Grove		
Proposed Site Plan		
Date: 03/02/22	Status: PLANNING	
Scale: 1:200 @ A3	© KSR Architects	
Project Ref:	Drawing No:	Revision:
20012-12	P-002	A

GENERAL NOTES:  
This drawing is copyright of KSR architects.  
This drawing must be read in conjunction with the Designer's Risk Assessment, specification and all other relevant documentation and drawings.  
KSR architects accept no liability for any expense, loss or damage of whatsoever nature and however arising from any variation made to this drawing or in the execution of the work to which it relates which has not been referred to them and their approval obtained.  
Areas are based on unchecked survey and are approximate only.  
Do not scale from this drawing or the digital data, only figured dimensions are to be used. Refer to linear scale for guidance.  
Check all dimensions on site prior to carrying out any works and advise any discrepancy



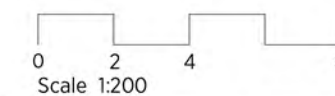
**KSR** ARCHITECTS &  
INTERIOR DESIGNERS  
KSR Architects LLP  
14 Greenland Street  
London NW1 0ND  
mail@ksrarchitects.com  
t: +44 (0)20 7692 5090  
www.ksrarchitects.com

12 Eldon Grove

Proposed Street Elevation

Date: 03/02/22	Status: PLANNING
Scale: 1:200 @ A3	© KSR Architects
Project Ref: 20012-12	Drawing No: P-003 Revision:

GENERAL NOTES:  
This drawing is copyright of KSR architects.  
This drawing must be read in conjunction with the Designer's Risk Assessment, specification and all other relevant documentation and drawings.  
KSR architects accept no liability for any expense, loss or damage of whatsoever nature and however arising from any variation made to this drawing or in the execution of the work to which it relates which has not been referred to them and their approval obtained.  
Areas are based on unchecked survey and are approximate only.  
Do not scale from this drawing or the digital data, only figured dimensions are to be used. Refer to linear scale for guidance.  
Check all dimensions on site prior to carrying out any works and advise any discrepancy



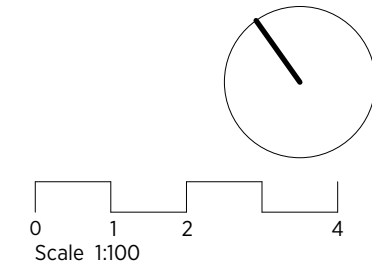
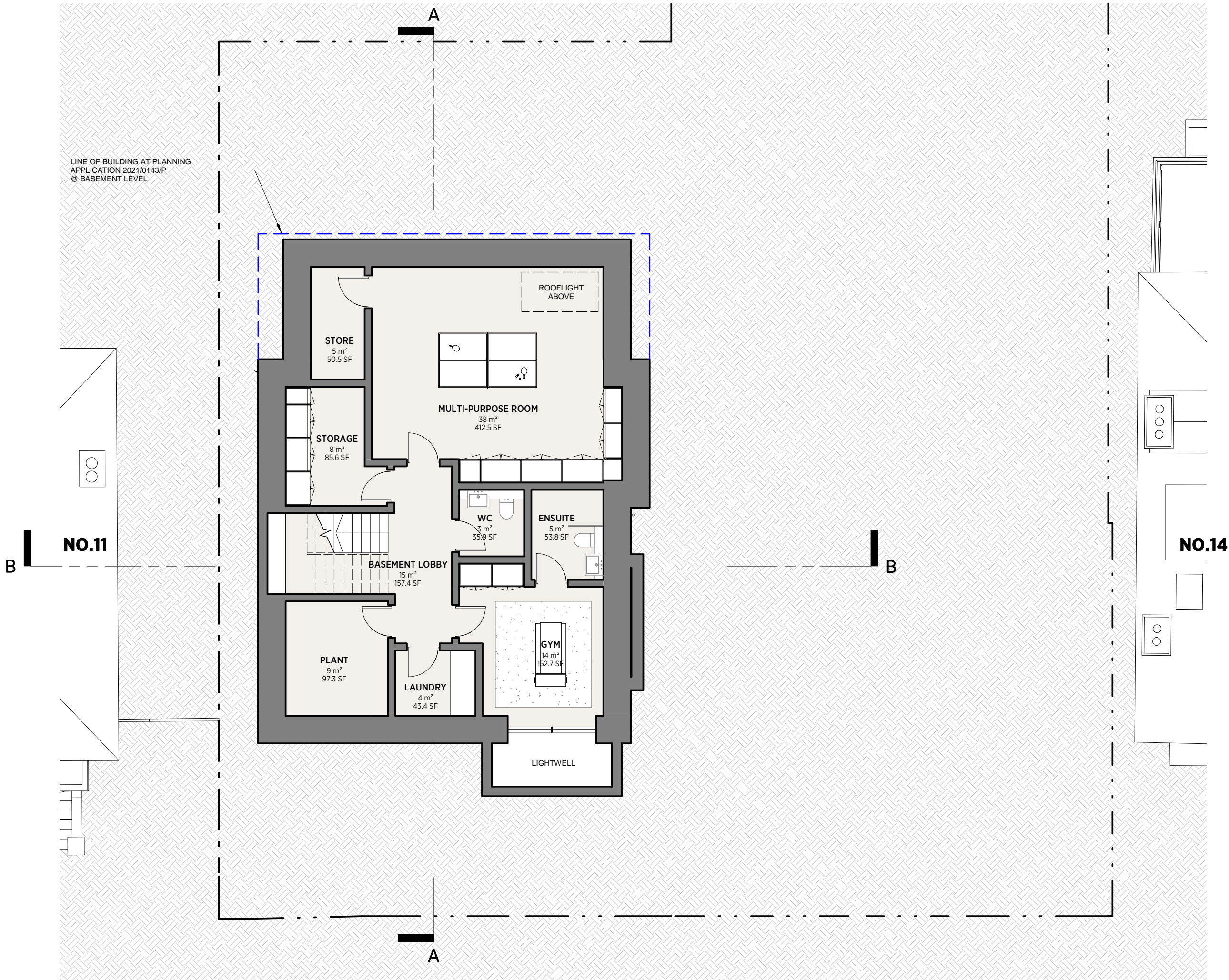
**KSR** ARCHITECTS &  
INTERIOR DESIGNERS  
KSR Architects LLP  
14 Greenland Street  
London NW1 0ND  
mail@ksrarchitects.com  
t: +44 (0)20 7692 5000  
www.ksrarchitects.com

12 Eldon Grove

Proposed Rear Elevation

Date: 03/02/22	Status: PLANNING
Scale: 1:200 @ A3	© KSR Architects
Project Ref: 20012-12	Drawing No: P-004

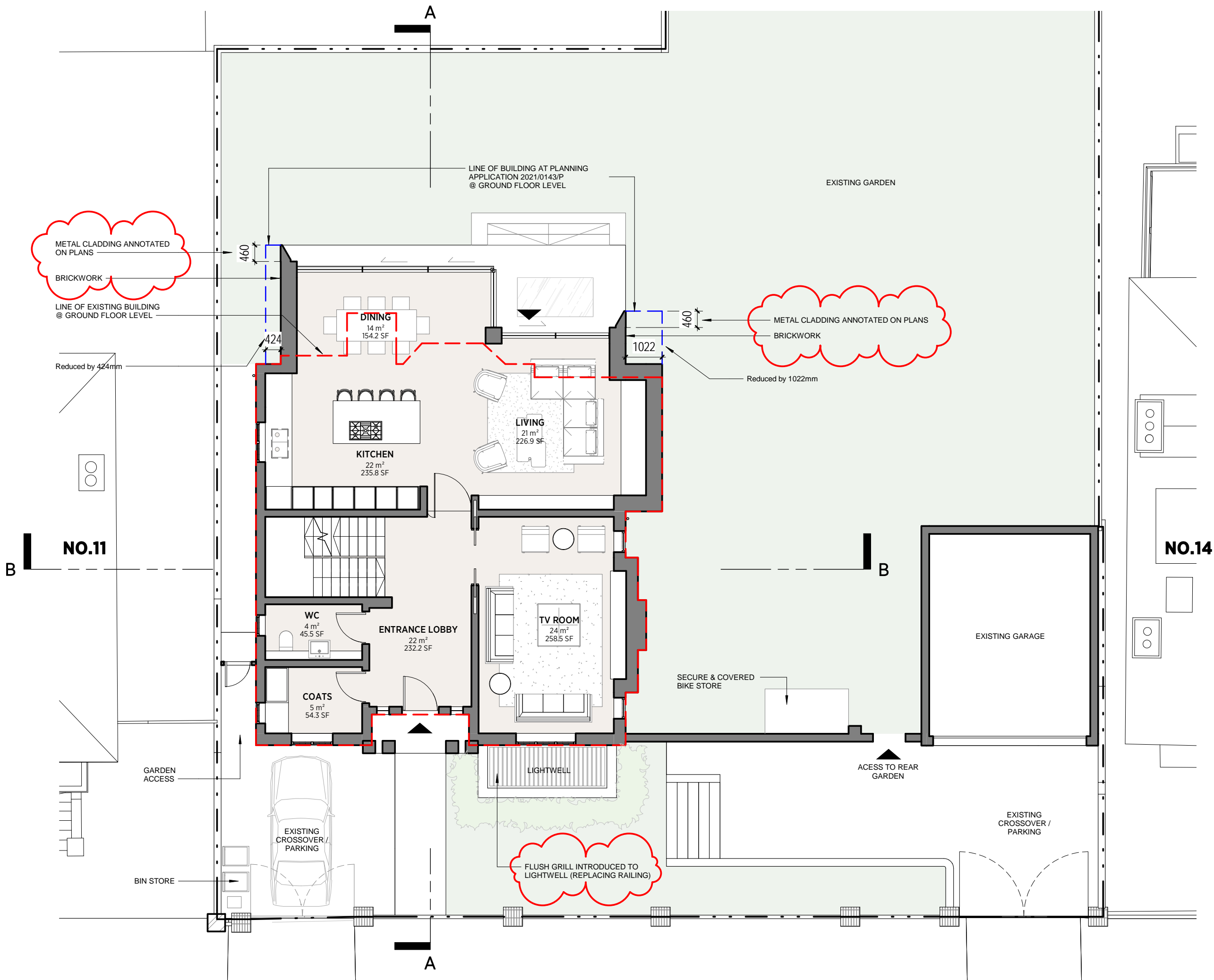
GENERAL NOTES:  
This drawing is copyright of KSR architects.  
This drawing must be read in conjunction with the Designer's Risk Assessment, specification and all other relevant documentation and drawings.  
KSR architects accept no liability for any expense, loss or damage of whatsoever nature and however arising from any variation made to this drawing or in the execution of the work to which it relates which has not been referred to them and their approval obtained.  
Areas are based on unchecked survey and are approximate only.  
Do not scale from this drawing or the digital data, only figured dimensions are to be used. Refer to linear scale for guidance.  
Check all dimensions on site prior to carrying out any works and advise any discrepancy



**KSR** ARCHITECTS & INTERIOR DESIGNERS  
KSR Architects LLP  
14 Greenland Street  
London NW1 0ND  
ma@ksrarchitects.com  
t: +44 (0)20 7692 5000  
www.ksrarchitects.com

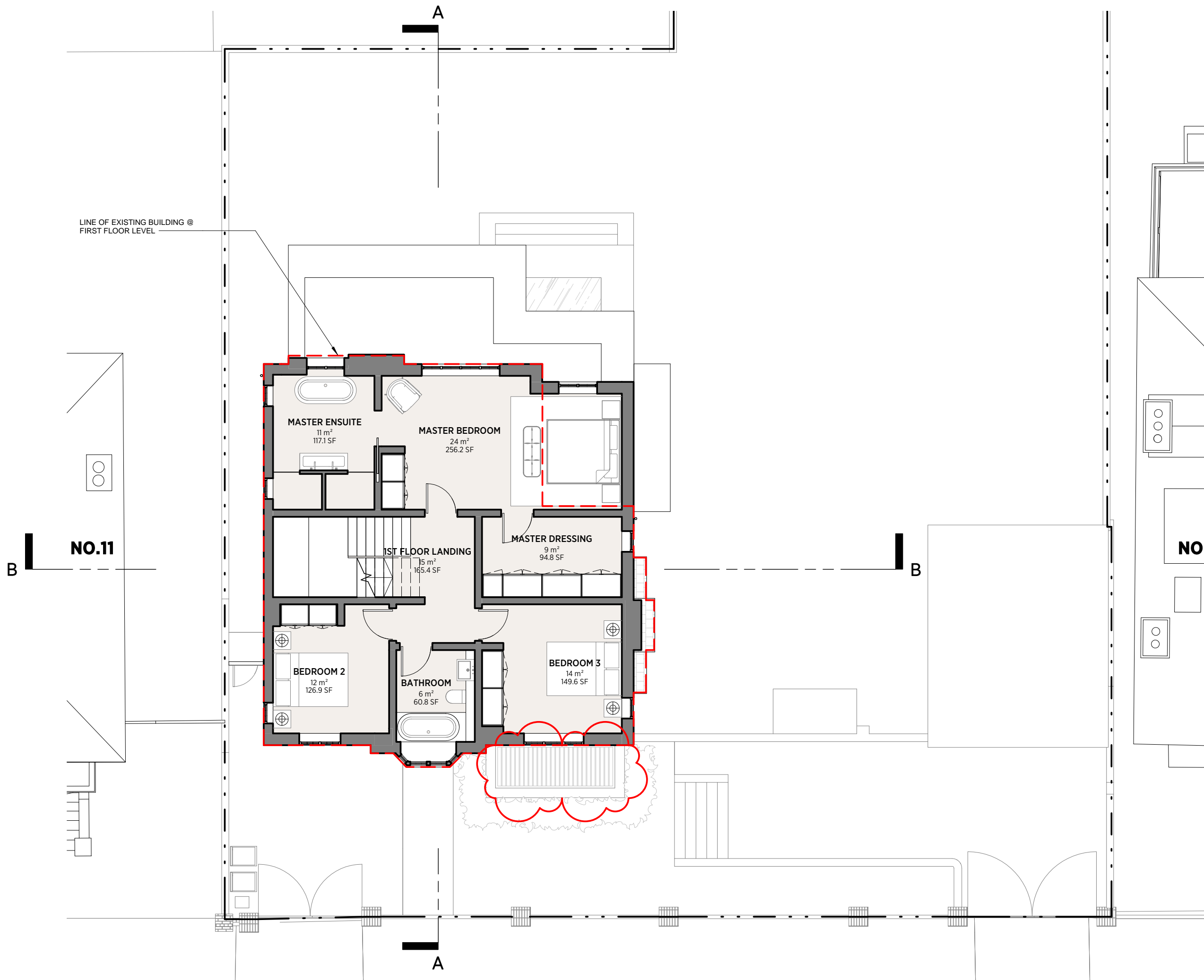
12 Eldon Grove			
Proposed Basement			
Date: 03/02/22	Status: PLANNING		
Scale: 1:100 @ A3	© KSR Architects		
Project Ref:	Drawing No:	Revision:	
20012-12	P-090		

GENERAL NOTES:  
This drawing is copyright of KSR architects.  
This drawing must be read in conjunction with the Designer's Risk Assessment, specification and all other relevant documentation and drawings.  
KSR architects accept no liability for any expense, loss or damage of whatsoever nature and however arising from any variation made to this drawing or in the execution of the work to which it relates which has not been referred to them and their approval obtained.  
Areas are based on unchecked survey and are approximate only.  
Do not scale from this drawing or the digital data, only figured dimensions are to be used. Refer to linear scale for guidance.  
Check all dimensions on site prior to carrying out any works and advise any discrepancy



**KSR ARCHITECTS & INTERIOR DESIGNERS**  
KSR Architects LLP  
14 Greenland Street  
London NW1 0ND  
mail@ksrarchitects.com  
t: +44 (0)20 7692 5000  
www.ksrarchitects.com

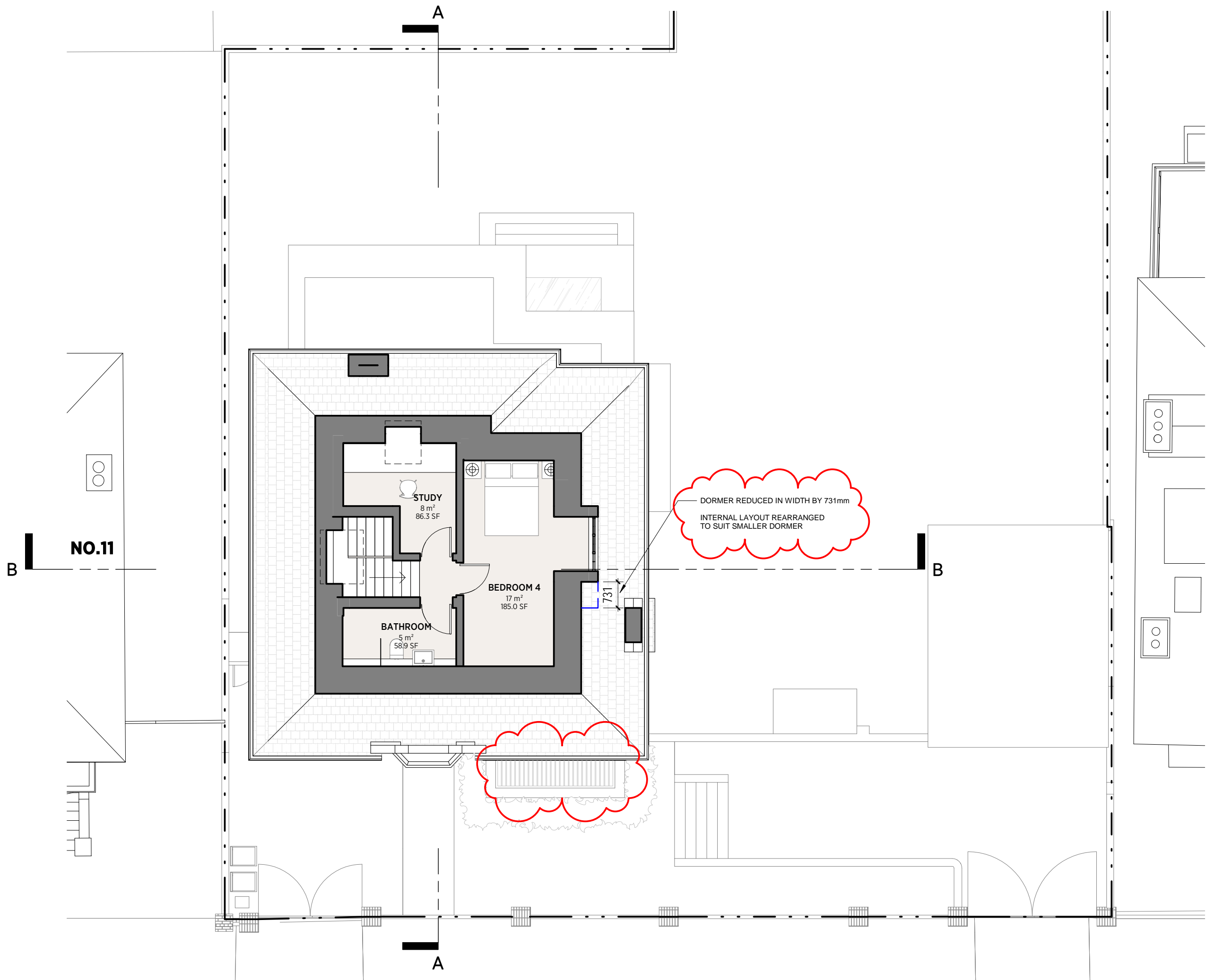
**12 Eldon Grove**  
**Proposed Ground Floor**  
Date: 03/02/22 Status: PLANNING  
Scale: 1:100 @ A3 © KSR Architects  
Project Ref: Drawing No: Revision:  
20012-12 P-100 A



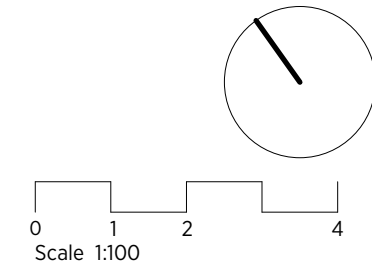
GENERAL NOTES:  
This drawing is copyright of KSR architects.  
This drawing must be read in conjunction with the Designer's Risk Assessment, specification and all other relevant documentation and drawings.  
KSR architects accept no liability for any expense, loss or damage of whatsoever nature and however arising from any variation made to this drawing or in the execution of the work to which it relates which has not been referred to them and their approval obtained.  
Areas are based on unchecked survey and are approximate only.  
Do not scale from this drawing or the digital data, only figured dimensions are to be used. Refer to linear scale for guidance.  
Check all dimensions on site prior to carrying out any works and advise any discrepancy

**KSR** ARCHITECTS & INTERIOR DESIGNERS  
KSR Architects LLP  
14 Greenland Street  
London NW1 0ND  
mail@ksrarchitects.com  
t: +44 (0)20 7692 5000  
www.ksrarchitects.com

12 Eldon Grove		
Proposed First Floor		
Date: 03/02/22	Status: PLANNING	
Scale: 1:100 @ A3	© KSR Architects	
Project Ref:	Drawing No:	Revision:
20012-12	P-110	A

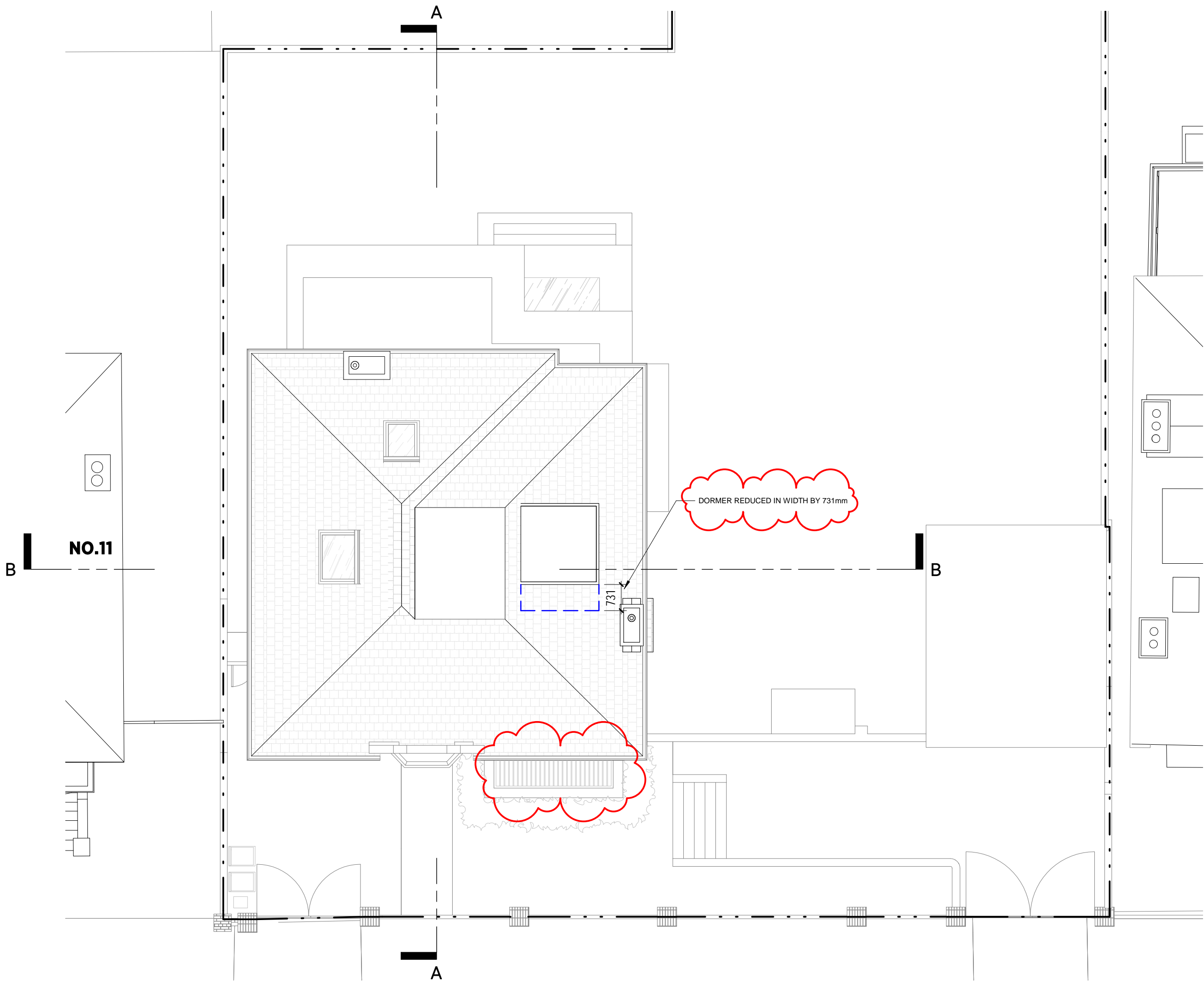


GENERAL NOTES:  
This drawing is copyright of KSR architects.  
This drawing must be read in conjunction with the Designer's Risk Assessment, specification and all other relevant documentation and drawings.  
KSR architects accept no liability for any expense, loss or damage of whatsoever nature and however arising from any variation made to this drawing or in the execution of the work to which it relates which has not been referred to them and their approval obtained.  
Areas are based on unchecked survey and are approximate only.  
Do not scale from this drawing or the digital data, only figured dimensions are to be used. Refer to linear scale for guidance.  
Check all dimensions on site prior to carrying out any works and advise any discrepancy

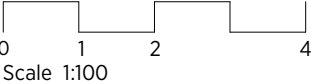


**KSR** ARCHITECTS & INTERIOR DESIGNERS  
KSR Architects LLP  
14 Greenland Street  
London NW1 0ND  
ma@ksrarchitects.com  
t: +44 (0)20 7692 5000  
www.ksrarchitects.com

12 Eldon Grove		
Proposed Second Floor		
Date: 03/02/22	Status: PLANNING	
Scale: 1:100 @ A3	© KSR Architects	
Project Ref:	Drawing No:	Revision:
20012-12	P-120	A



GENERAL NOTES:  
This drawing is copyright of KSR architects.  
This drawing must be read in conjunction with the Designer's Risk Assessment, specification and all other relevant documentation and drawings.  
KSR architects accept no liability for any expense, loss or damage of whatsoever nature and however arising from any variation made to this drawing or in the execution of the work to which it relates which has not been referred to them and their approval obtained.  
Areas are based on unchecked survey and are approximate only.  
Do not scale from this drawing or the digital data, only figured dimensions are to be used. Refer to linear scale for guidance.  
Check all dimensions on site prior to carrying out any works and advise any discrepancy

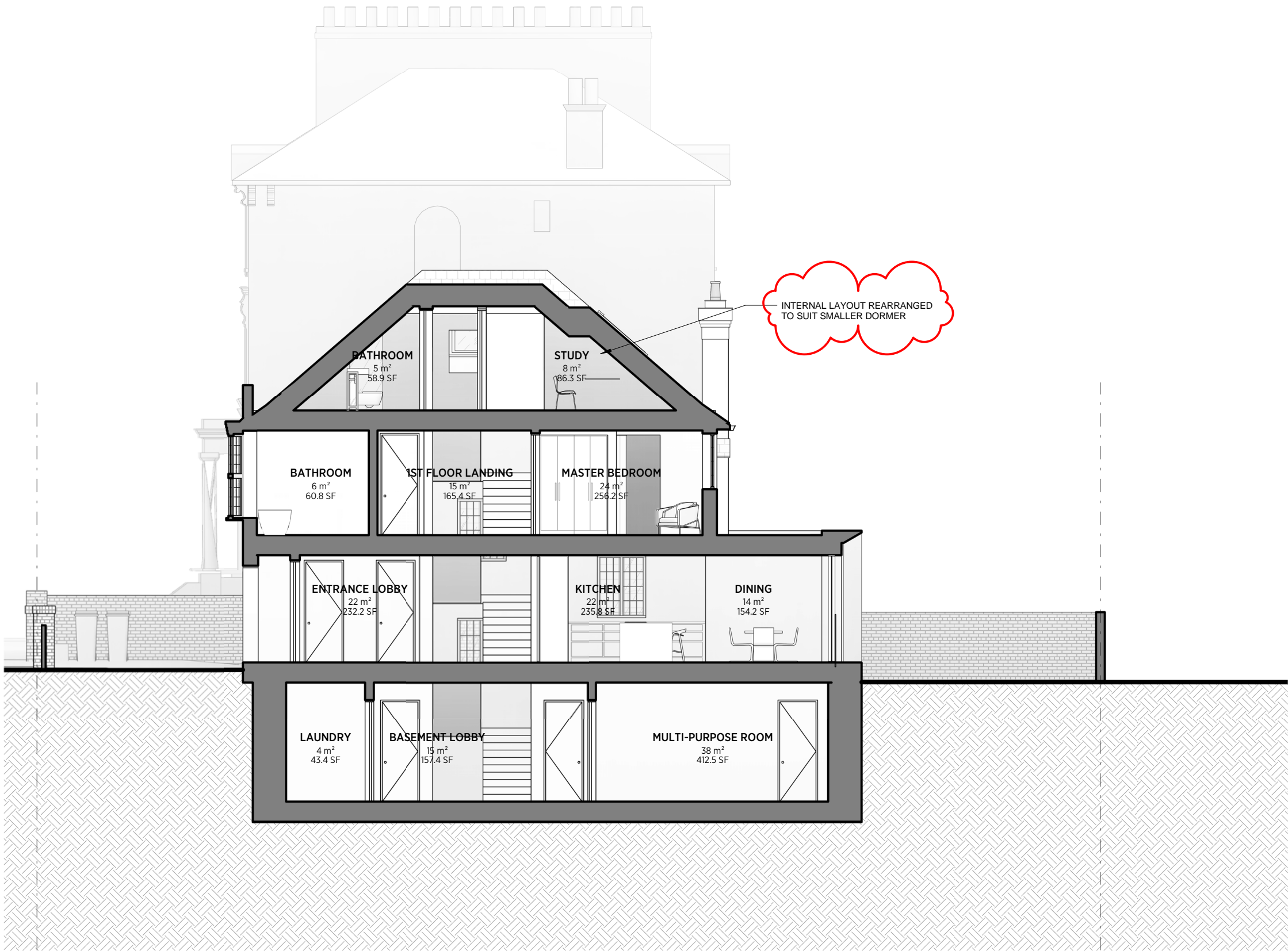


**KSR** ARCHITECTS & INTERIOR DESIGNERS  
KSR Architects LLP  
14 Greenland Street  
London NW1 0ND  
ma@ksrarchitects.com  
t: +44 (0)20 7692 5000  
www.ksrarchitects.com

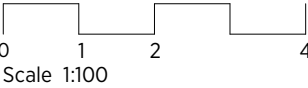
12 Eldon Grove

Proposed Roof

Date: 03/02/22	Status: PLANNING
Scale: 1:100 @ A3	© KSR Architects
Project Ref: 20012-12	Drawing No: P-130
	Revision: A

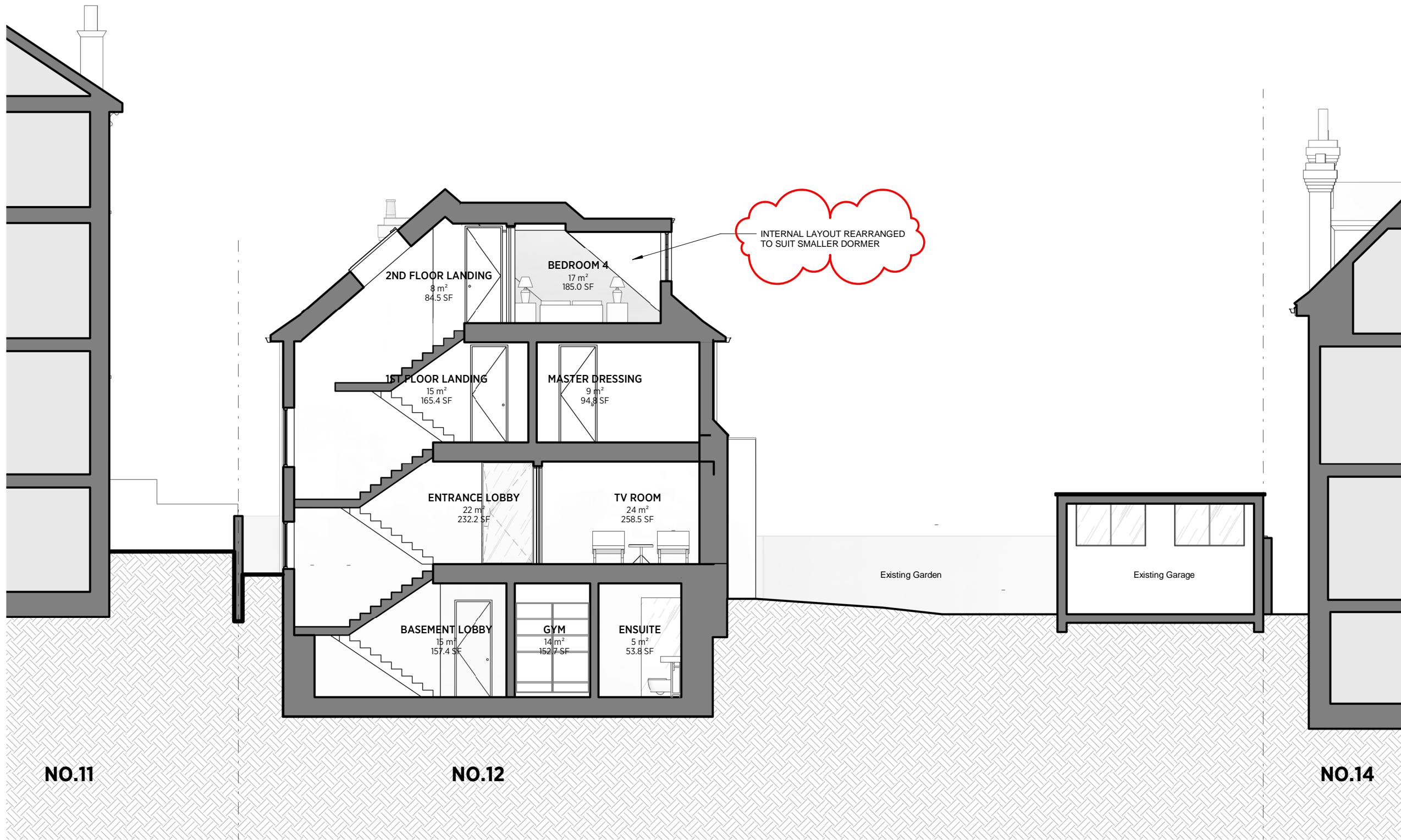


GENERAL NOTES:  
This drawing is copyright of KSR architects.  
This drawing must be read in conjunction with the Designer's Risk Assessment, specification and all other relevant documentation and drawings.  
KSR architects accept no liability for any expense, loss or damage of whatsoever nature and however arising from any variation made to this drawing or in the execution of the work to which it relates which has not been referred to them and their approval obtained.  
Areas are based on unchecked survey and are approximate only.  
Do not scale from this drawing or the digital data, only figured dimensions are to be used. Refer to linear scale for guidance.  
Check all dimensions on site prior to carrying out any works and advise any discrepancy

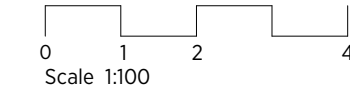


**KSR** ARCHITECTS &  
INTERIOR DESIGNERS  
KSR Architects LLP  
14 Greenland Street  
London NW1 0ND  
mail@ksrarchitects.com  
t: +44 (0)20 7692 5000  
www.ksrarchitects.com

12 Eldon Grove		
Proposed Section A		
Date: 03/02/22	Status: PLANNING	
Scale: 1:100 @ A3	© KSR Architects	
Project Ref:	Drawing No:	Revision:
20012-12	P-200	A



GENERAL NOTES:  
This drawing is copyright of KSR architects.  
This drawing must be read in conjunction with the Designer's Risk Assessment, specification and all other relevant documentation and drawings.  
KSR architects accept no liability for any expense, loss or damage of whatsoever nature and however arising from any variation made to this drawing or in the execution of the work to which it relates which has not been referred to them and their approval obtained.  
Areas are based on unchecked survey and are approximate only.  
Do not scale from this drawing or the digital data, only figured dimensions are to be used. Refer to linear scale for guidance.  
Check all dimensions on site prior to carrying out any works and advise any discrepancy

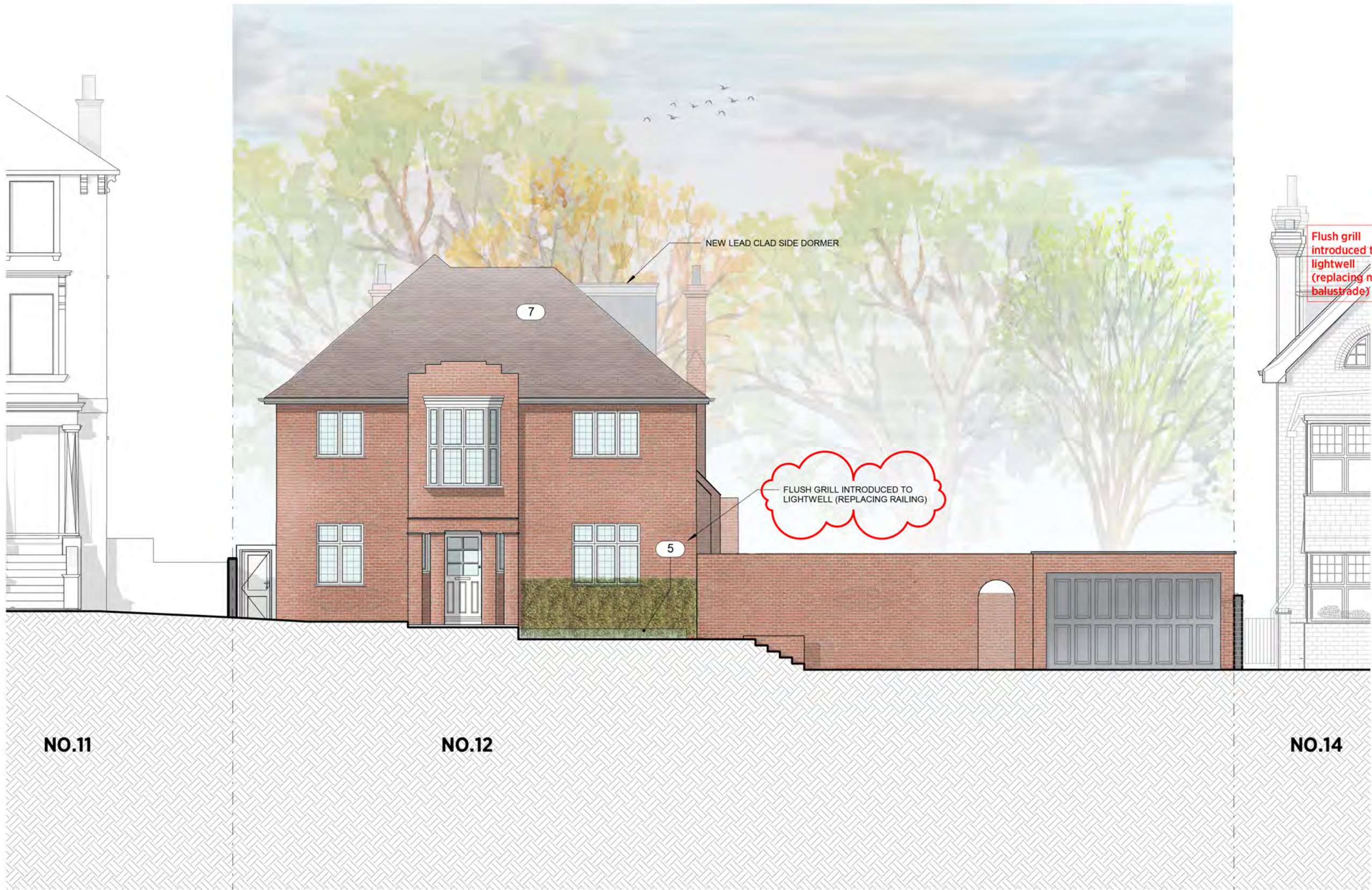


**KSR** ARCHITECTS & INTERIOR DESIGNERS  
KSR Architects LLP  
14 Greenland Street  
London NW1 0ND  
ma@ksrarchitects.com  
t: +44 (0)20 7692 5000  
www.ksrarchitects.com

12 Eldon Grove

Proposed Section B

Date: 03/02/22	Status: PLANNING
Scale: 1:100 @ A3	© KSR Architects
Project Ref: 20012-12	Drawing No: P-201 Revision: A

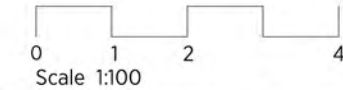


GENERAL NOTES:  
This drawing is copyright of KSR architects.  
This drawing must be read in conjunction with the Designer's Risk Assessment, specification and all other relevant documentation and drawings.  
KSR architects accept no liability for any expense, loss or damage of whatsoever nature and however arising from any variation made to this drawing or in the execution of the work to which it relates which has not been referred to them and their approval obtained.  
Areas are based on unchecked survey and are approximate only.  
Do not scale from this drawing or the digital data, only figured dimensions are to be used. Refer to linear scale for guidance.  
Check all dimensions on site prior to carrying out any works and advise any discrepancy

#### No.12 MATERIAL KEY

- 1 EXISTING BRICKWORK or NEW BRICKWORK TO MATCH EXISTING
- 2 METAL CLADDING
- 3 NEW METAL FRAME WINDOWS (TO MATCH EXISTING)
- 4 SLIMLINE ALUMINUM WINDOWS / DOORS
- 5 FLUSH GRILL TO LIGHTWELL
- 6 OBSCURE GLAZING
- 7 NEW RED CLAY ROOF TILES (TO MATCH EXISTING)

NOTE: All existing windows to be replaced with double-glazed metal windows to match existing



**KSR** ARCHITECTS & INTERIOR DESIGNERS  
KSR Architects LLP  
14 Greenland Street  
London NW1 0ND  
mail@ksrarchitects.com  
t: +44 (0)20 7692 5000  
www.ksrarchitects.com

12 Eldon Grove

#### Proposed Front Elevation

Date: 03/02/22	Status: PLANNING
Scale: 1:100 @ A3	© KSR Architects
Project Ref: 20012-12	Drawing No: P-300
	Revision: A

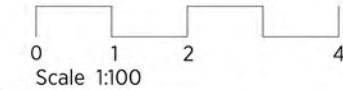


GENERAL NOTES:  
This drawing is copyright of KSR architects.  
This drawing must be read in conjunction with the Designer's Risk Assessment, specification and all other relevant documentation and drawings.  
KSR architects accept no liability for any expense, loss or damage of whatsoever nature and however arising from any variation made to this drawing or in the execution of the work to which it relates which has not been referred to them and their approval obtained.  
Areas are based on unchecked survey and are approximate only.  
Do not scale from this drawing or the digital data, only figured dimensions are to be used. Refer to linear scale for guidance.  
Check all dimensions on site prior to carrying out any works and advise any discrepancy

No.12 MATERIAL KEY

- 1 EXISTING BRICKWORK or NEW BRICKWORK TO MATCH EXISTING
- 2 METAL CLADDING
- 3 NEW METAL FRAME WINDOWS (TO MATCH EXISTING)
- 4 SLIMLINE ALUMINUM WINDOWS / DOORS
- 5 FLUSH GRILL TO LIGHTWELL
- 6 OBSCURE GLAZING
- 7 NEW RED CLAY ROOF TILES (TO MATCH EXISTING)

NOTE: All existing windows to be replaced with double-glazed metal windows to match existing



**KSR** ARCHITECTS & INTERIOR DESIGNERS  
KSR Architects LLP  
14 Greenland Street  
London NW1 0ND  
mail@ksrarchitects.com  
t: +44 (0)20 7692 5000  
www.ksrarchitects.com

12 Eldon Grove

Proposed Side Elevation 1

Date: 03/02/22	Status: PLANNING
Scale: 1:100 @ A3	© KSR Architects
Project Ref: 20012-12	Drawing No: P-301
	Revision: A

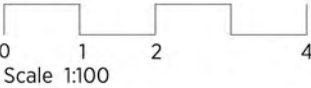


GENERAL NOTES:  
This drawing is copyright of KSR architects.  
This drawing must be read in conjunction with the Designer's Risk Assessment, specification and all other relevant documentation and drawings.  
KSR architects accept no liability for any expense, loss or damage of whatsoever nature and however arising from any variation made to this drawing or in the execution of the work to which it relates which has not been referred to them and their approval obtained.  
Areas are based on unchecked survey and are approximate only.  
Do not scale from this drawing or the digital data, only figured dimensions are to be used. Refer to linear scale for guidance.  
Check all dimensions on site prior to carrying out any works and advise any discrepancy

No.12 MATERIAL KEY

- 1 EXISTING BRICKWORK or NEW BRICKWORK TO MATCH EXISTING
- 2 METAL CLADDING
- 3 NEW METAL FRAME WINDOWS (TO MATCH EXISTING)
- 4 SLIMLINE ALUMINUM WINDOWS / DOORS
- 5 FLUSH GRILL TO LIGHTWELL
- 6 OBSCURE GLAZING
- 7 NEW RED CLAY ROOF TILES (TO MATCH EXISTING)

NOTE: All existing windows to be replaced with double-glazed metal windows to match existing

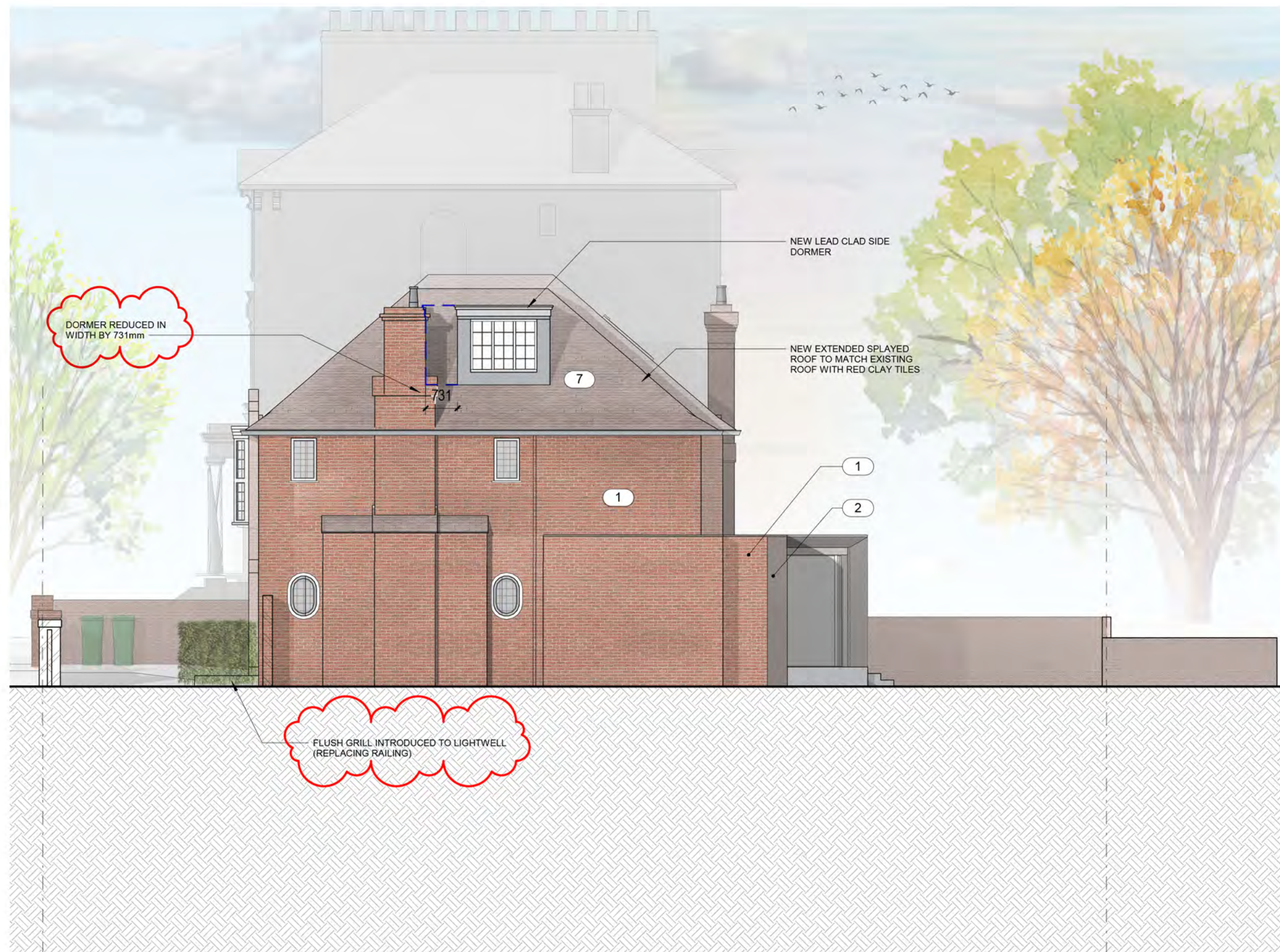


**KSR** ARCHITECTS & INTERIOR DESIGNERS  
KSR Architects LLP  
14 Greenland Street  
London NW1 0ND  
mail@ksrarchitects.com  
t: +44 (0)20 7692 5000  
www.ksrarchitects.com

12 Eldon Grove

Proposed Rear Elevation

Date: 03/02/22	Status: PLANNING
Scale: 1:100 @ A3	© KSR Architects
Project Ref: 20012-12	Drawing No: P-302
	Revision: A



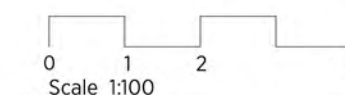
GENERAL NOTES:  
This drawing is copyright of KSR architects.  
This drawing must be read in conjunction with the Designer's Risk Assessment, specification and all other relevant documentation and drawings.  
KSR architects accept no liability for any expense, loss or damage of whatsoever nature and however arising from any variation made to this drawing or in the execution of the work to which it relates which has not been referred to them and their approval obtained.  
Areas are based on unchecked survey and are approximate only.  
Do not scale from this drawing or the digital data, only figured dimensions are to be used. Refer to linear scale for guidance.  
Check all dimensions on site prior to carrying out any works and advise any discrepancy

#### No.12 MATERIAL KEY

- 1 EXISTING BRICKWORK or NEW BRICKWORK TO MATCH EXISTING
- 2 METAL CLADDING
- 3 NEW METAL FRAME WINDOWS (TO MATCH EXISTING)
- 4 SLIMLINE ALUMINUM WINDOWS / DOORS
- 5 FLUSH GRILL TO LIGHTWELL
- 6 OBSCURE GLAZING
- 7 NEW RED CLAY ROOF TILES (TO MATCH EXISTING)

NOTE: All existing windows to be replaced with double-glazed metal windows to match existing

Flush grill introduced to lightwell (replacing metal balustrade)



**KSR** ARCHITECTS & INTERIOR DESIGNERS

KSR Architects LLP  
14 Greenland Street  
London NW1 0ND

mail@ksrarchitects.com  
t: +44 (0)20 7692 5000  
www.ksrarchitects.com

12 Eldon Grove

Proposed Side Elevation 2

Date: 03/02/22	Status: PLANNING
Scale: 1:100 @ A3	© KSR Architects
Project Ref: 20012-12	Drawing No: P-303
	Revision: A