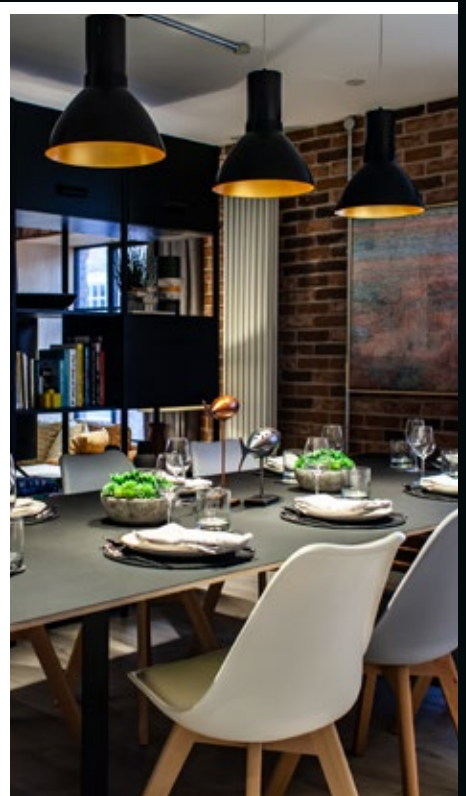
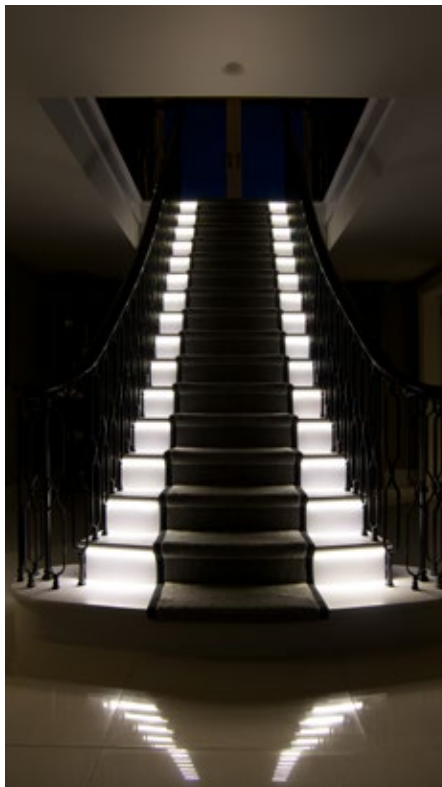




# LIGHTING DESIGN

BRINGING YOU THE ULTIMATE LIGHTING SOLUTION



**PROJECT:**

**REFERENCE:**

**DESIGNER:**

**DATE:**

**KSR LIGHTING LTD**

Unit E Hazleton Interchange, Lakesmere Road, Horndean  
Hampshire, PO8 9JU

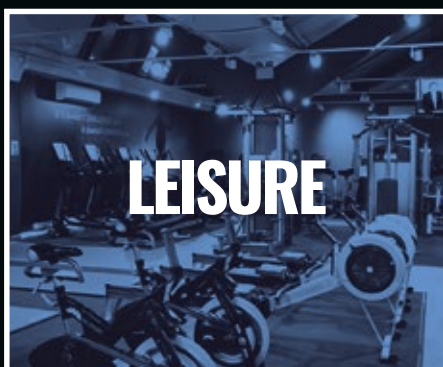
T: 02392 674343 | F: 02392 674344 | E: sales@ksrlighting.com

**KSRLIGHTING.COM**



**#KEEPITKSR**

# HOW WE CAN HELP YOU MARKET SECTORS



The KSR Lighting team have a wealth of industry knowledge and this enables us to transition into a company with an enviable reputation for having a comprehensive array of quality lighting products, for many different sectors.

With our offices and warehouse based in Waterlooville, Hampshire, we distribute our products throughout the UK, Ireland and Europe.

Some of the other services we offer include technical support, a free lighting design service and a happy and helpful customer service team who understand the critical importance of keeping the customer satisfied.

Our National Sales Team are available to assist you in creating the Ultimate Lighting Solution for your project.

We work in the following sectors:

- ✓ Domestic
- ✓ Commercial
- ✓ Industrial
- ✓ Leisure
- ✓ Local Authority
- ✓ Retail & Hospitality

With the additional support of our in-house Lighting Designers, KSR Lighting will be by your side from conception through to the completion of your projects.

Should you require any installation support, our Aftersales Technical Department are at hand to support you in any way they can.

## GET IN TOUCH TODAY

02392 674343 | SALES@KSRLIGHTING.COM  
LIGHTINGDESIGN@KSRLIGHTING.COM

OR SPEAK TO YOUR LOCAL KSR AREA SALES MANAGER

**#KEEPITKSR**



# TERMS & CONDITIONS

---

Lighting calculations are provided as a guide only. Calculations are undertaken with dimensions provided by the customer. All dimensions are to be checked prior to installation.

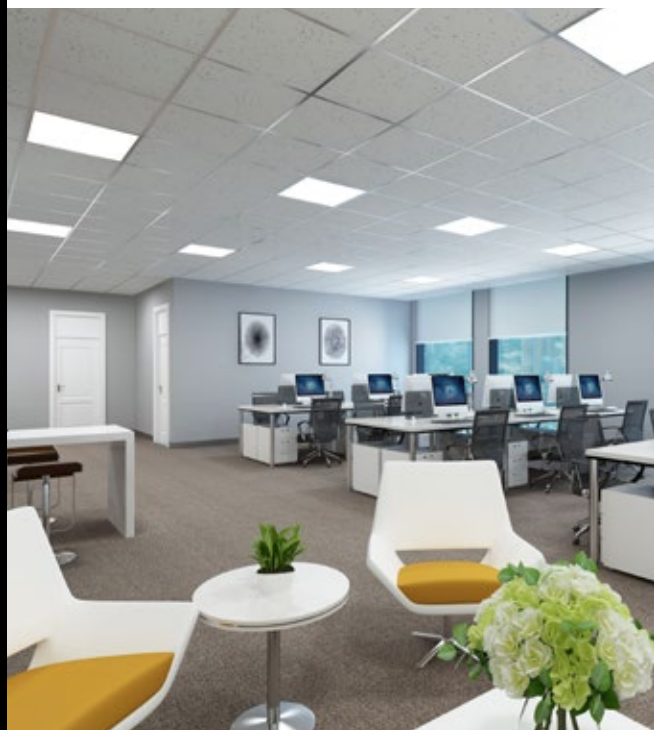
Lighting designed to CIBSE guidelines or the relevant standards where applicable, all stated lux values are for overall averages across the area reference plane.

Please note that many factors can change actual levels gained. Everything from materials used to colour.

The attached report is a guide only and KSR Lighting accept no responsibility for variances in levels.

The following values are based on exact calculations on calibrated lamps, luminaires and their arrangement. In practice, gradual divergences can occur. Guarantee claims for luminaires data are excluded.

Designs are an indication of appropriate lighting type and location within a given space. It is the installation contractors responsibility to provide appropriate cabling, switching and sockets in line with building regulations and best practice.



Object :  
 Installation :  
 Project number : P2022-546  
 Date : 20.06.2022



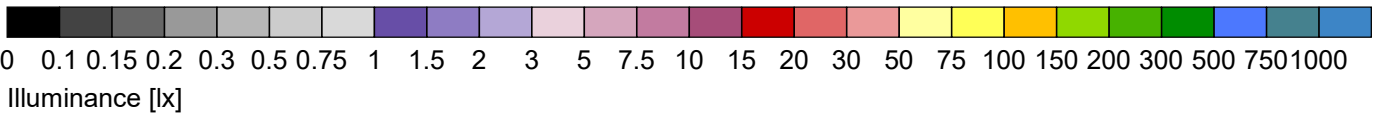
# 1 Exterior (B)

## 1.1 Summary, Exterior (B)

### 1.1.1 Result overview, Evaluation area 1



0 10 20 30 40 50 60 70 80 90 100 x [m]



#### General



Calculation algorithm used	Average indirect fraction
Maintenance factor	0.80
Total luminous flux	48429.90 lm
Total power	574.7 W
Total power per area (2500.00 m <sup>2</sup> )	0.23 W/m <sup>2</sup> (3.05 W/m <sup>2</sup> /100lx)

#### Evaluation area 1

#### Reference plane 1.1

	Horizontal
Em	7.54 lx
Emin	0 lx
Emin/Em (Uo)	---
Emin/Emax (Ud)	---
Position	0.00 m

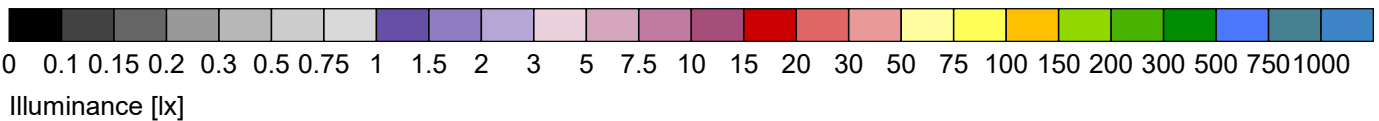
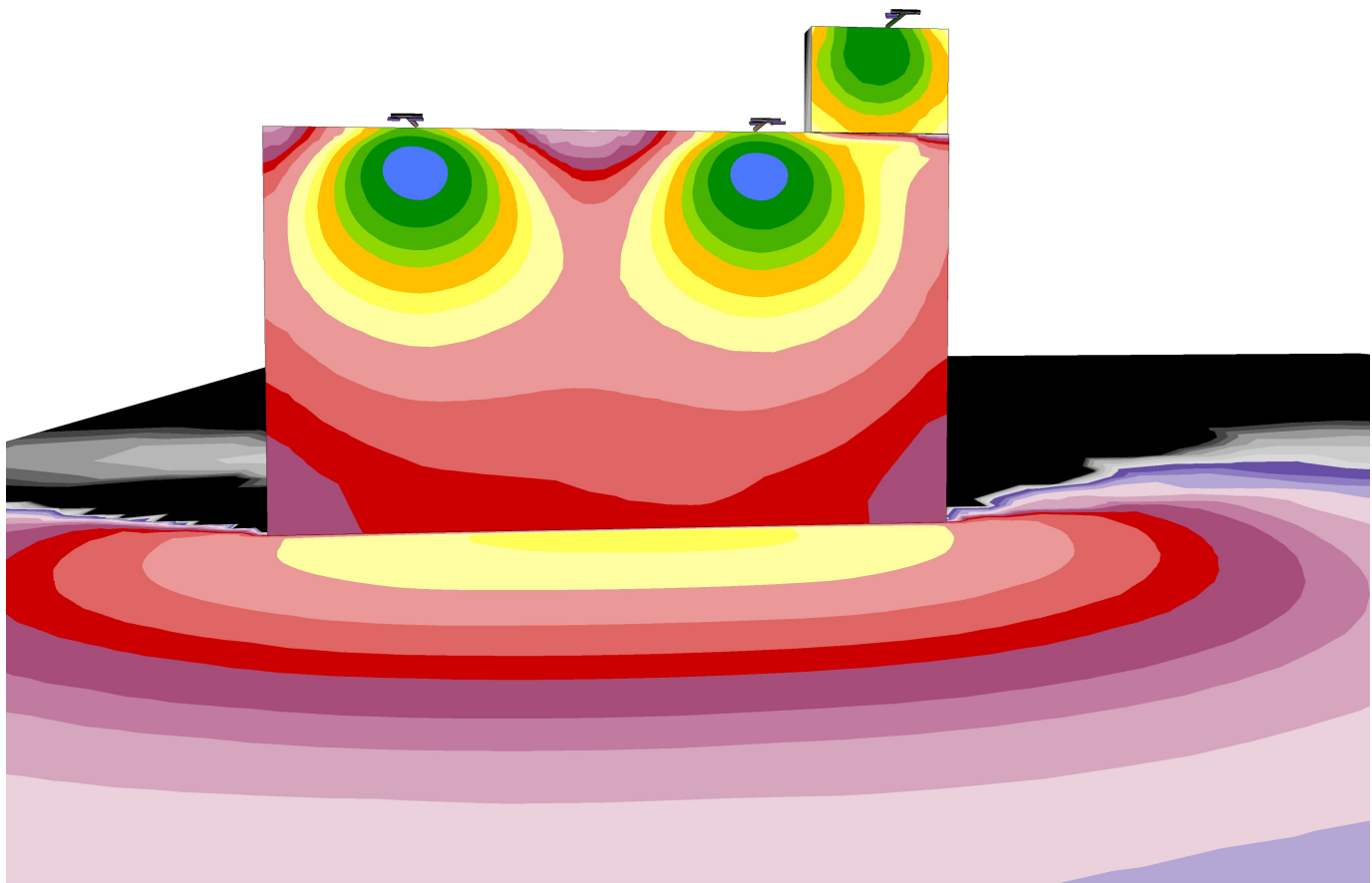
#### Type No.\Make

<b>KSR Lighting</b>	
2 2 x	Order No. : KSR5291
	Luminaire name : Siena 150w LED Floodlight in 4000K
	Equipment : 1 x LED 145 W / 12414 lm
4 3 x	Order No. : KSR5289
	Luminaire name : Siena 100w LED Floodlight in 4000K
	Equipment : 1 x LED 94.9 W / 7867.3 lm

# 1 Exterior (B)

## 1.2 Calculation results, Exterior (B)

### 1.2.1 3D pseudo colours, View 1 (E)



## 1.2 Calculation results, Exterior (B)

### 1.2.2 3D pseudo colours, View 2 (E)

