

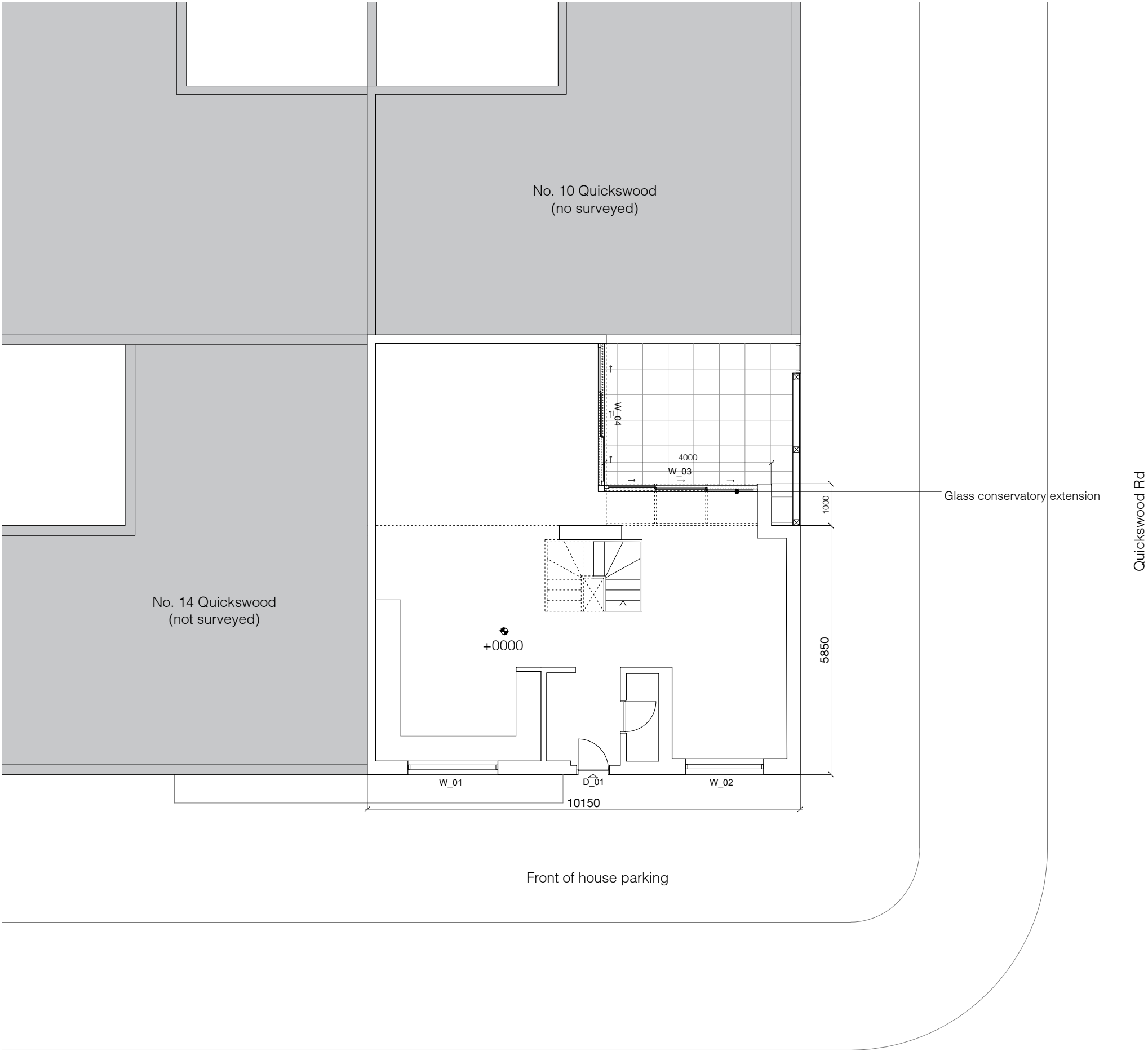
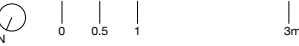
FILE NAME:DWG			
179-(01)100			
PROJECT	PACKAGE	DRAWING NO.	REVISION
179	(01)	100	P1
SCALE		DATE	
1:50@A3/1:70@A4		2022/07/13	
OS REFERENCE LEVEL		STATUS	
N/A ± 0,00 = TBC		PLANNING	

ARCHITECT
DF_DC
A 42 Theobalds Road, London WC1X 8NW
T +44 (0)20 7405 9361 E info@df.network W df-dc.co.uk

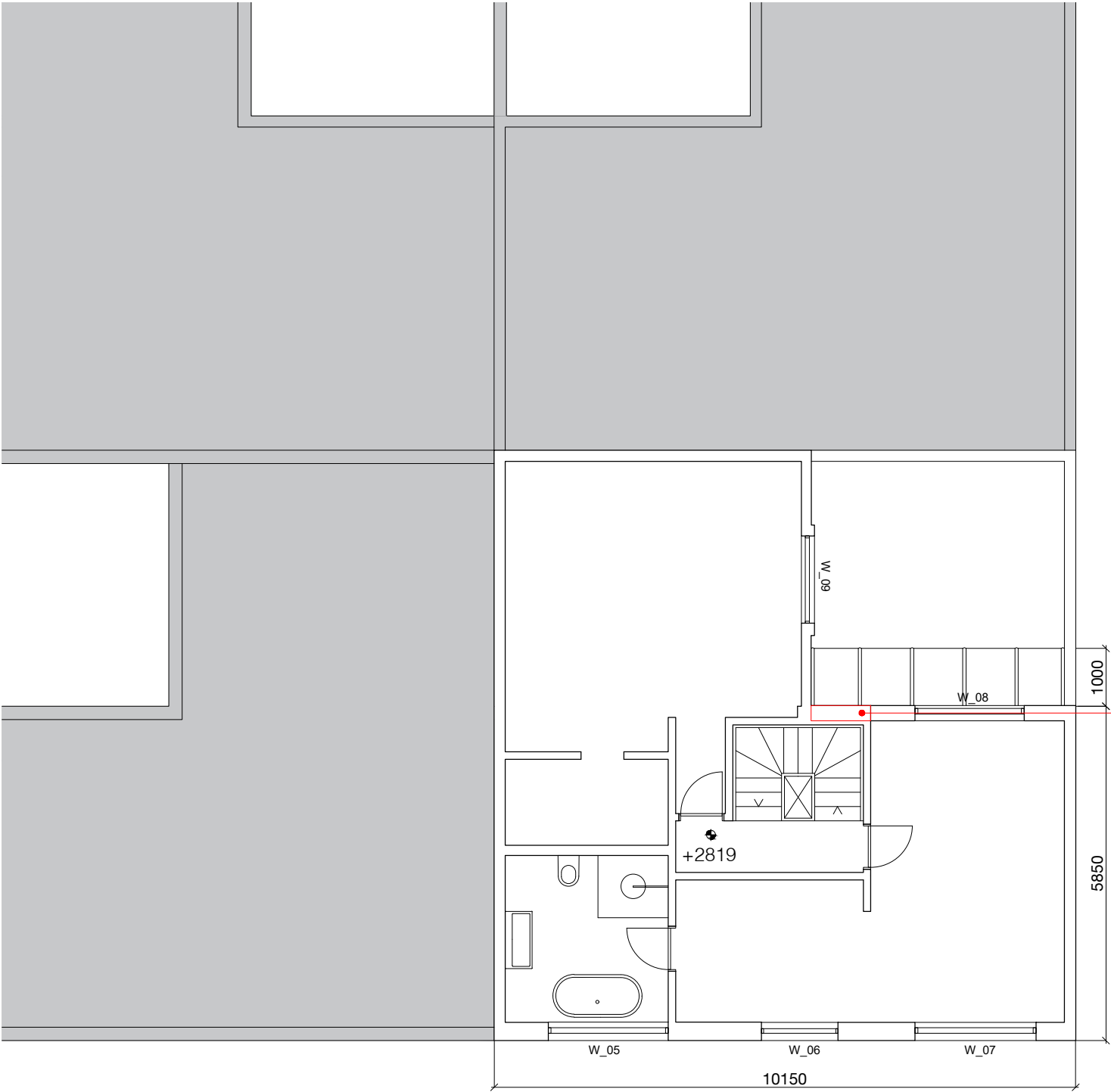
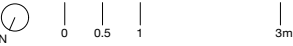
GENERAL NOTES
Do not scale from this drawing. Use only annotated dimensions. All dimensions to be verified on site by contractor. All dimensions in millimetres unless otherwise noted. Any discrepancies to be notified to DF_DC and contract administrator.
Company registered in England, no. 09415285.

© 2016 DF_DC All rights reserved.

REVISIONS	
REV. DATE	AMENDMENT

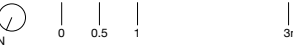


REVISIONS	
REV. DATE	AMENDMENT

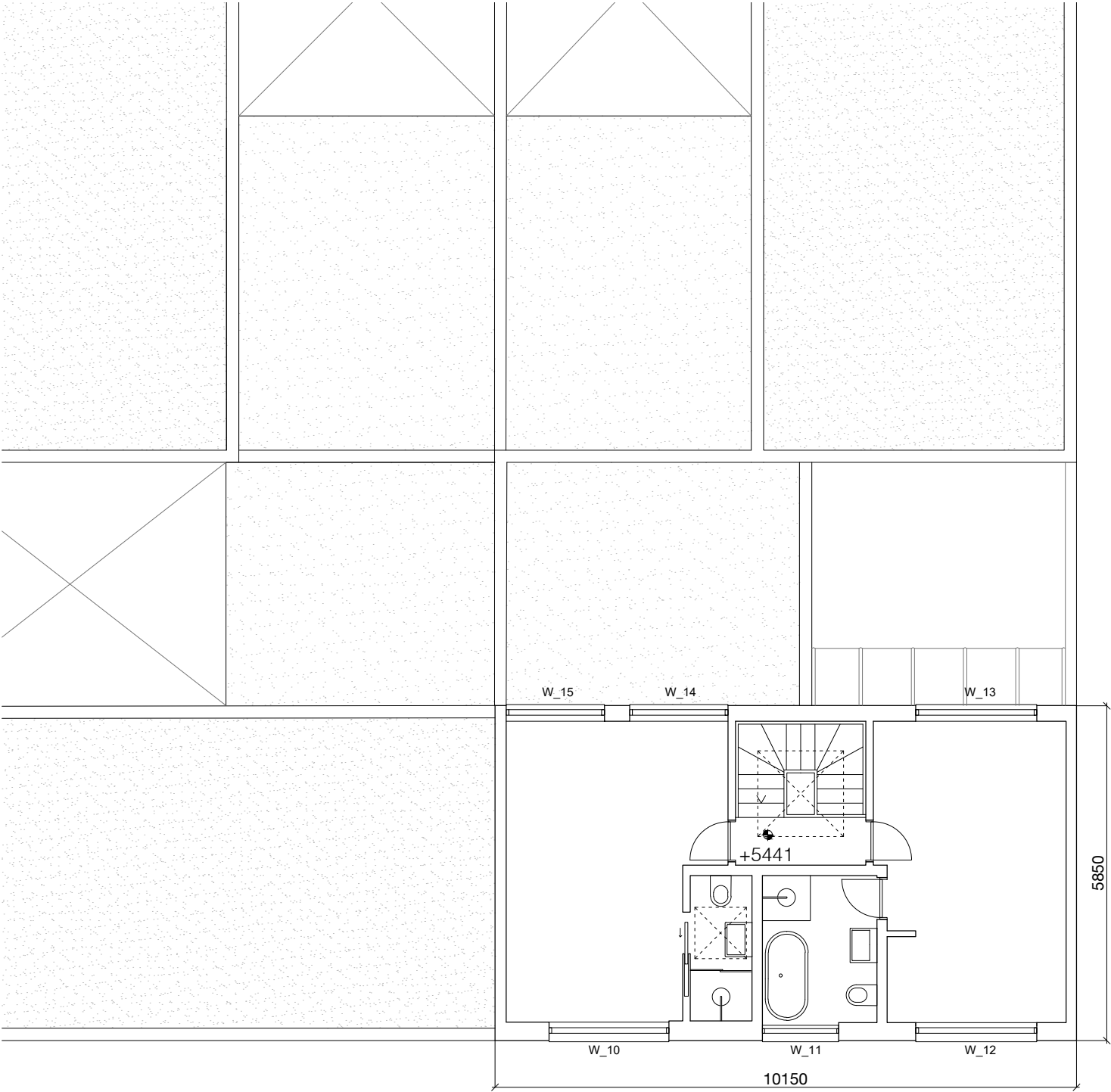


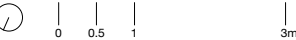
REMOVAL EXISTING WINDOW
APPROVED UNDER PRIOR
APPROVAL APPLICATION
REF. 2022/0434/P

REVISIONS	
REV. DATE	AMENDMENT

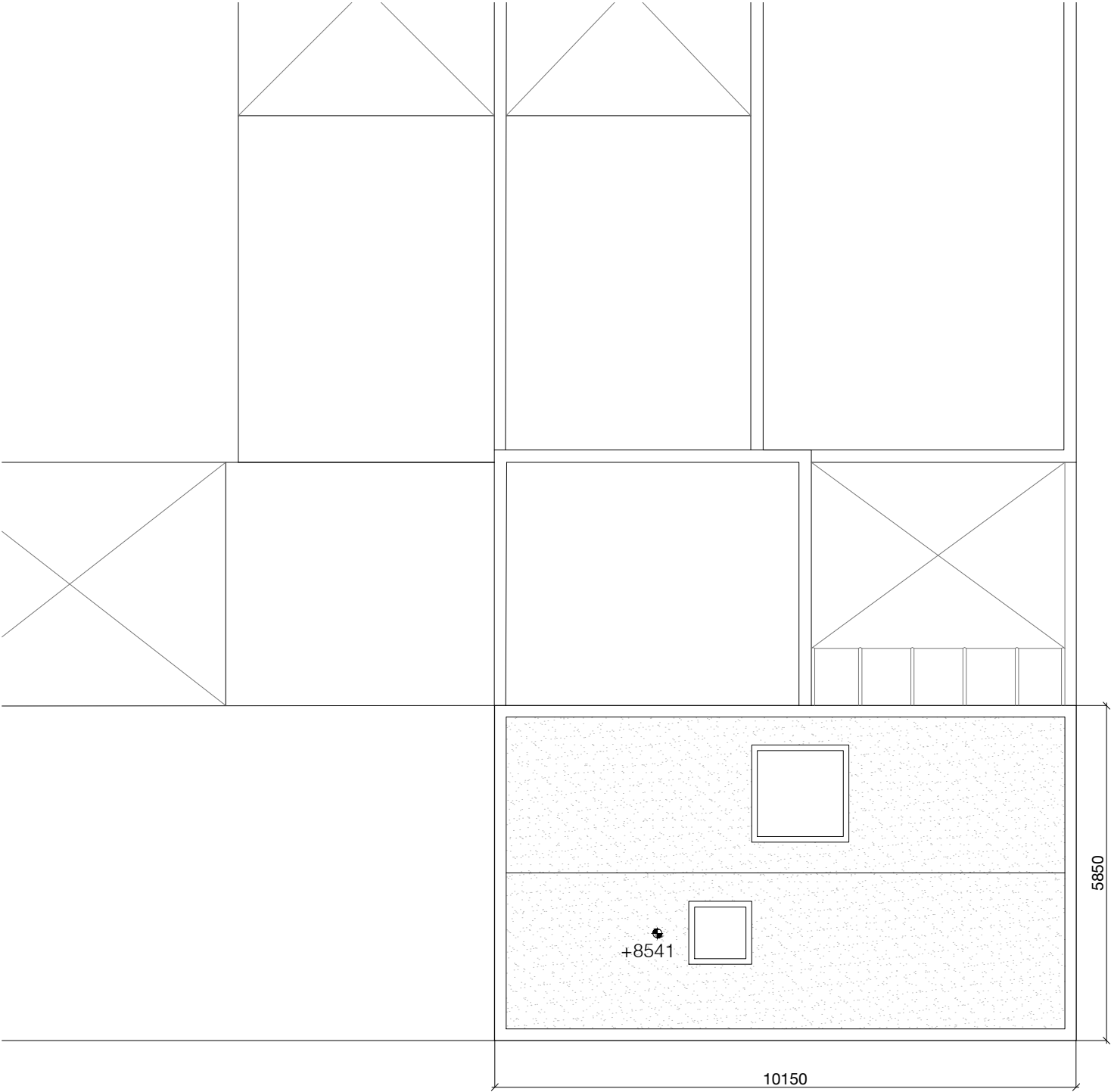


PREVIOUSLY APPROVED
UNDER PRIOR APPROVAL
APPLICATION
REF.2022/0434/P

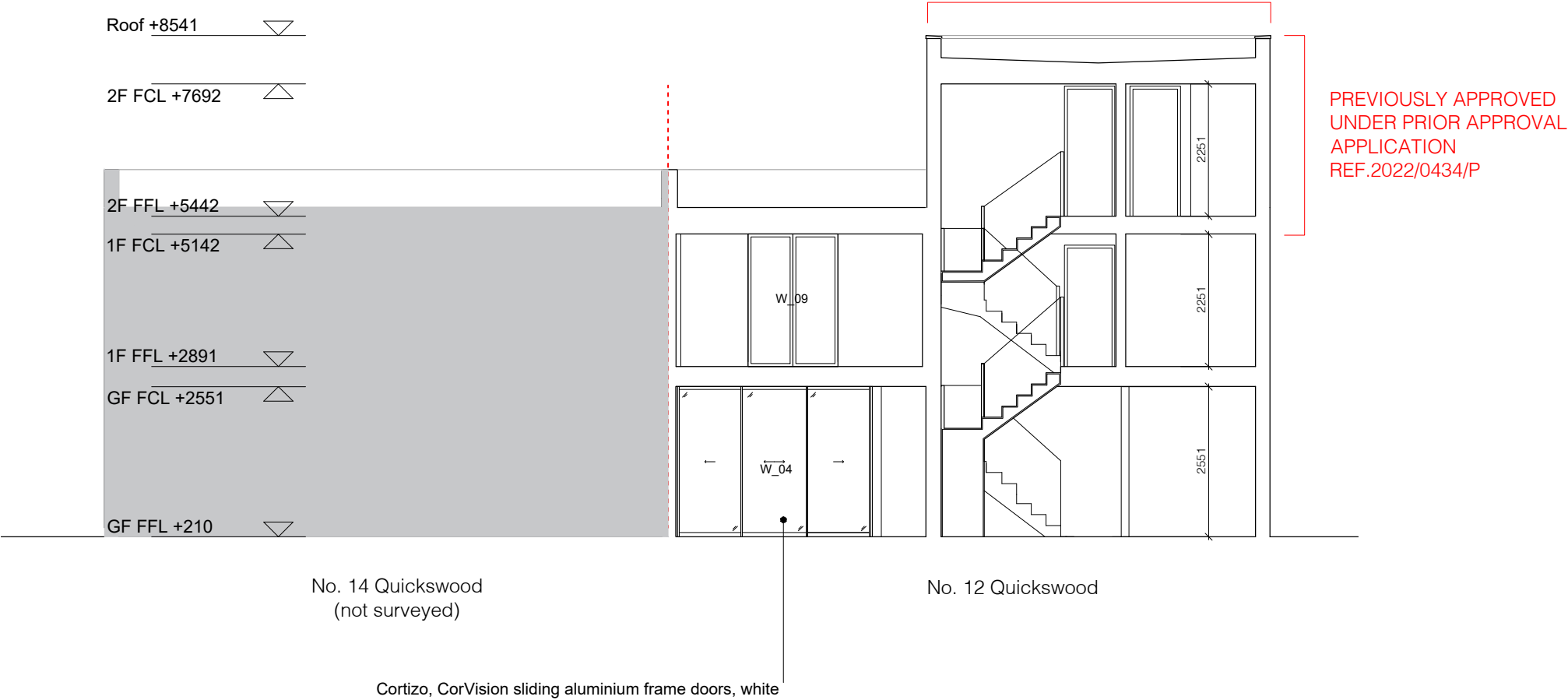




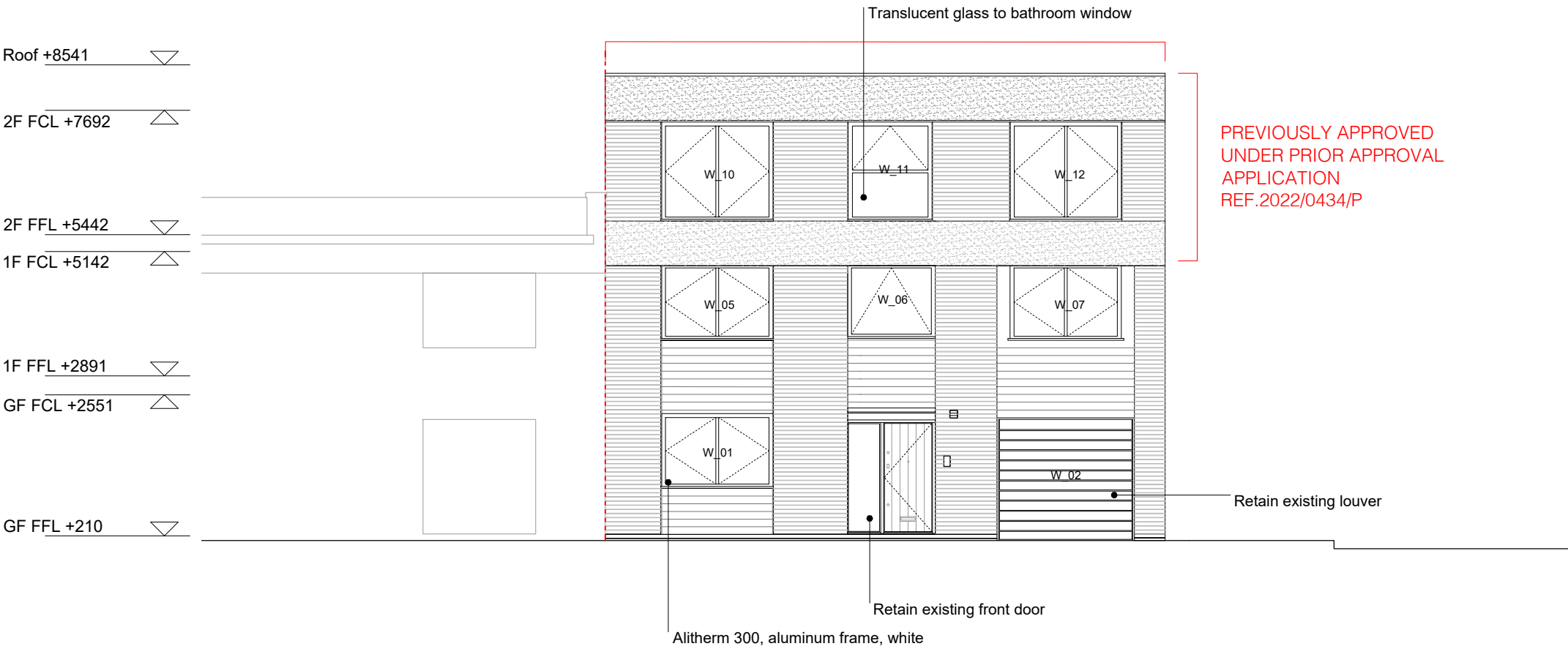
PREVIOUSLY APPROVED
UNDER PRIOR APPROVAL
APPLICATION
REF.2022/0434/P



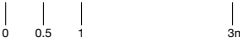
REVISIONS	
REV. DATE	AMENDMENT



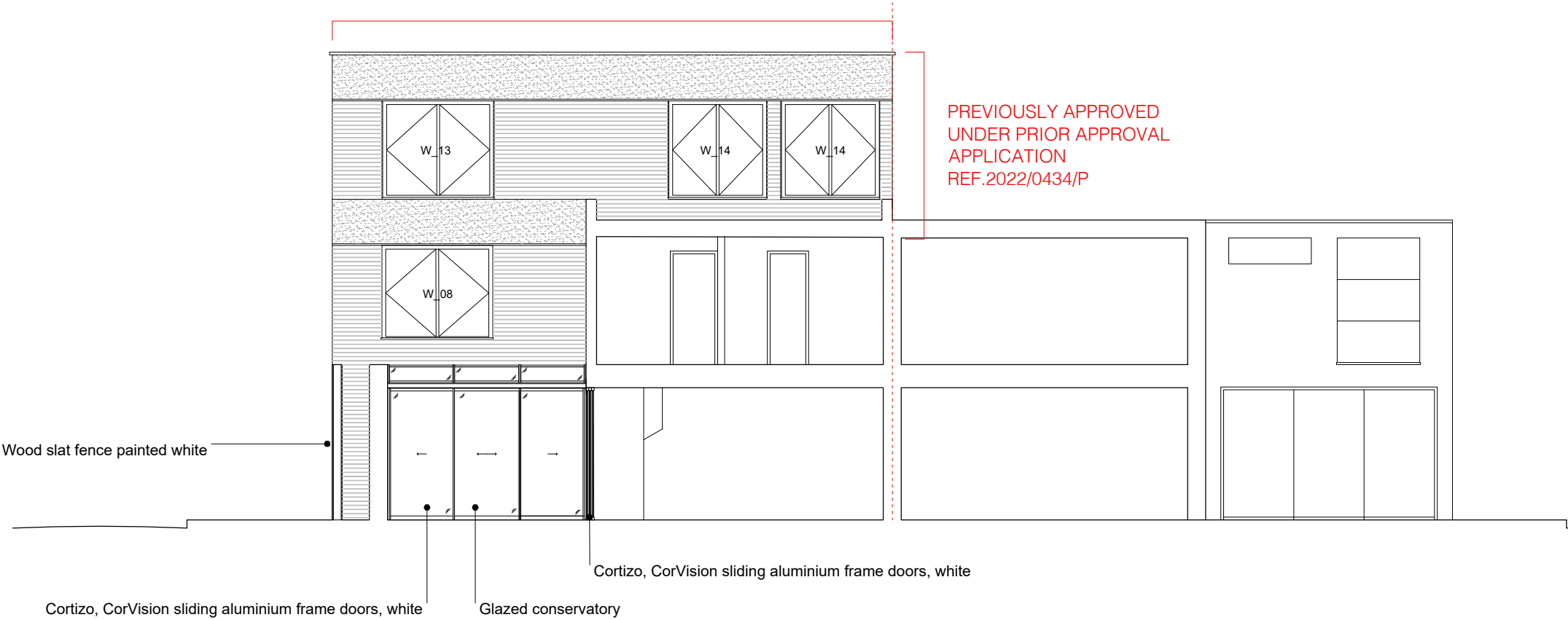
REVISIONS	
REV. DATE	AMENDMENT



REVISIONS	
REV. DATE	AMENDMENT



Roof +8541
2F FCL +7692
2F FFL +5442
1F FCL +5142
1F FFL +2891
GF FCL +2551
GF FFL +210



Cortizo, CorVision sliding aluminium frame doors, white

Glazed conservatory

No. 12 Quickswood

No. 14 Quickswood