



GENERAL NOTES.

© Buckley Gray Yeoman Limited

All dimensions to be checked on site prior to commencement of any works, and/or preparation of any shop drawings.

Sizes of and dimensions to any structural elements are indicative only. See structural engineers drawings for actual sizes / dimensions.

Sizes of and dimensions to any service elements are indicative only. See service engineers drawings for actual sizes and dimensions.

This drawing to be read in conjunction with all other Architect's drawings, specifications and other Consultants' information.

All proprietary systems shown on this drawing are to be installed strictly in accordance with the Manufacturers/Suppliers recommended details.

Any discrepancies between information shown on this drawing and any other contract information or manufacturers/suppliers recommendations is to be brought to the attention of the Architect

DO NOT SCALE FROM THIS DRAWING.

NOTES.

Schedule of Works

- Existing structural wall opened up to form access to fire escape stair
- Careful removal of existing access stair and partitions to form compliant means of escape to Ground Floor
- Careful removal of basement structures that hold up, to be removed stair on Ground floor
- Floor opening up for new access stair in Post-Production Studio
- Removal of bricked up window, and existing fenestration in Courtyard
- Careful removal of modern partitioning and non-structural elements to open up spaces
- Careful removal of existing WC arrangement for new WCs
- Opening up in roof structure for ventilation access
- Careful removal of non-structural timber deck in loading bay, to return to main structural slab level
- Careful removal of brick infill to existing brick arch headed doorway
- Careful removal of flooring and associated structure to facilitate staircase demolition. Extent of required removal subject to on site review
- Careful removal of existing staircase
- Demolish existing lean to including roof, windows and wall structures. Sensitively remove flashing and re-mortar cut ins. Repair and make good any damaged areas.
- Remove thin partition in existing opening and make good reveals to form an opening for new door.
- Retention of existing floor finishes for reuse, to be investigated

Demolition of partitions

Removal of surface finishes

Removal of structures

AREA OUTSIDE OF SCOPE OF THIS APPLICATION

P1 06/06/22 Issued for Planning

REV. DATE NOTE

DRAWN

BGY

BUCKLEY GRAY YEOMAN
+ 44 20 7033 9913
BGY.CO.UK

CLIENT

General Projects

PROJECT

Heals Building

DRAWING

**Demolition Plan
Ground Floor**

SCALE

1:100 @ A1

1:200 @ A3

DATE

June 2022

DWG No.

1215_PL3ii-DP-OOP1

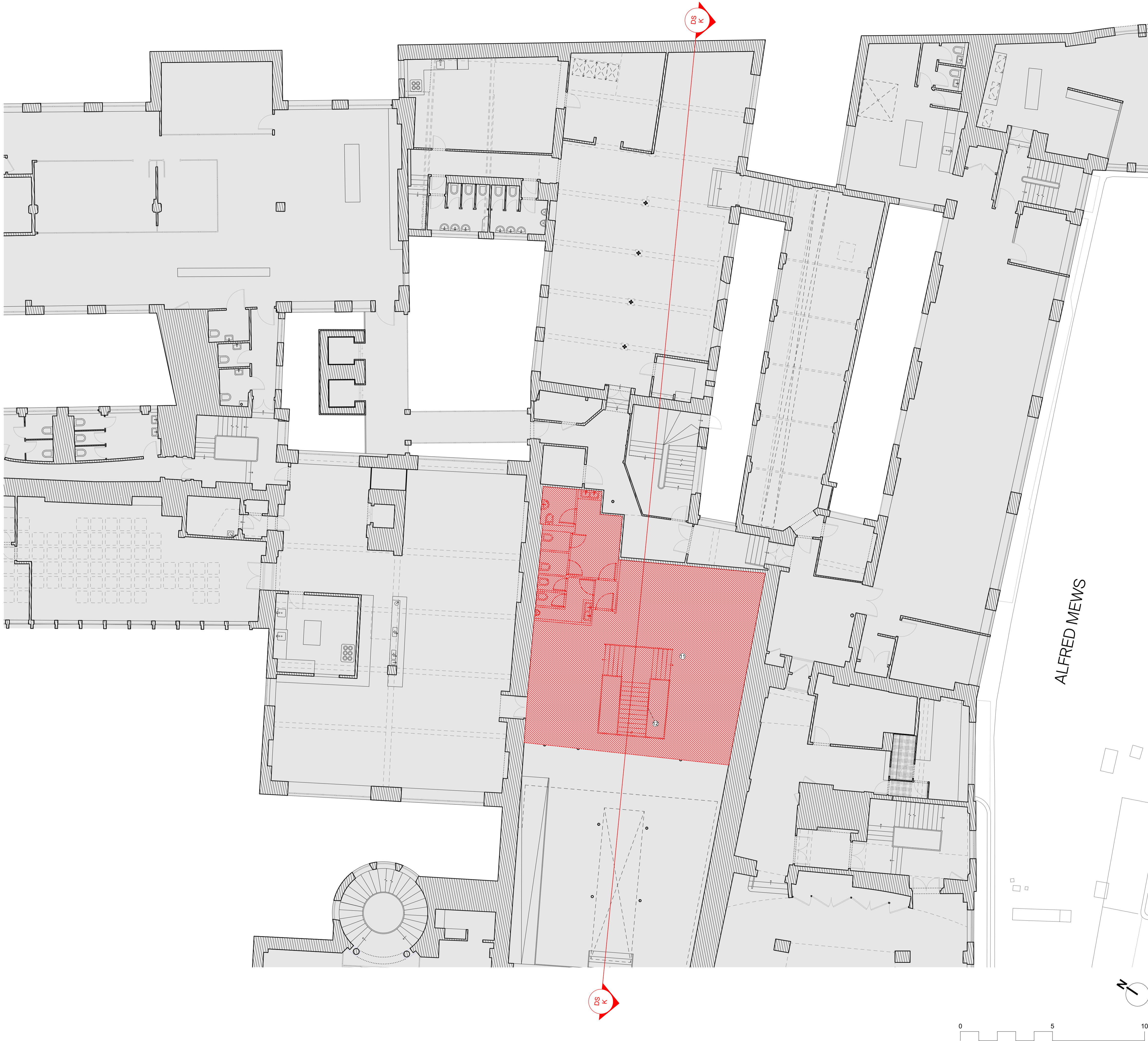
REVISION

STATUS

PLANNING

APPROVED

NJ



GENERAL NOTES.

© Buckley Gray Yeoman Limited

All dimensions to be checked on site prior to commencement of any works, and/or preparation of any shop drawings.

Sizes of and dimensions to any structural elements are indicative only. See structural engineers drawings for actual sizes / dimensions.

Sizes of and dimensions to any service elements are indicative only. See service engineers drawings for actual sizes and dimensions.

This drawing to be read in conjunction with all other Architect's drawings, specifications and other Consultants' information.

All proprietary systems shown on this drawing are to be installed strictly in accordance with the Manufacturers/Suppliers recommended details.

Any discrepancies between information shown on this drawing and any other contract information or manufacturers/suppliers recommendations is to be brought to the attention of the Architect

DO NOT SCALE FROM THIS DRAWING.

- NOTES.
- Schedule of Works
- Existing structural wall opened up to form access to fire escape stair
 - Careful removal of existing access stair and partitions to form compliant means of escape to Ground Floor
 - Careful removal of basement structures that hold up, to be removed stair on Ground floor
 - Floor opening up for new access stair in Post-Production Studio
 - Removal of bricked up window, and existing fenestration in Courtyard
 - Careful removal of modern partitioning and non-structural elements to open up spaces
 - Careful removal of existing WC arrangement for new WCs
 - Opening up in roof structure for ventilation access
 - Careful removal of non-structural timber deck in loading bay, to return to main structural slab level
 - Careful removal of brick infill to existing brick arch headed doorway
 - Careful removal of flooring and associated structure to facilitate staircase demolition. Extent of required removal subject to on site review
 - Careful removal of existing staircase
 - Demolish existing lean to including roof, windows and wall structures. Sensitively remove flashing and re-mortar cut ins. Repair and make good any damaged areas.
 - Remove thin partition in existing opening and make good reveals to form an opening for new door.
 - Retention of existing floor finishes for reuse, to be investigated

- Demolition of partitions
- Removal of surface finishes
- Removal of structures
- AREA OUTSIDE OF SCOPE OF THIS APPLICATION

P1 06/06/22 Issued for Planning
REV. DATE NOTE DRAWN

BGY
BUCKLEY GRAY YEOMAN
+ 44 20 7033 9913
BGY.CO.UK

CLIENT
General Projects

PROJECT
Heals Building

DRAWING
**Demolition Plan
First Floor**

SCALE
1:100 @ A1 1:200 @ A3

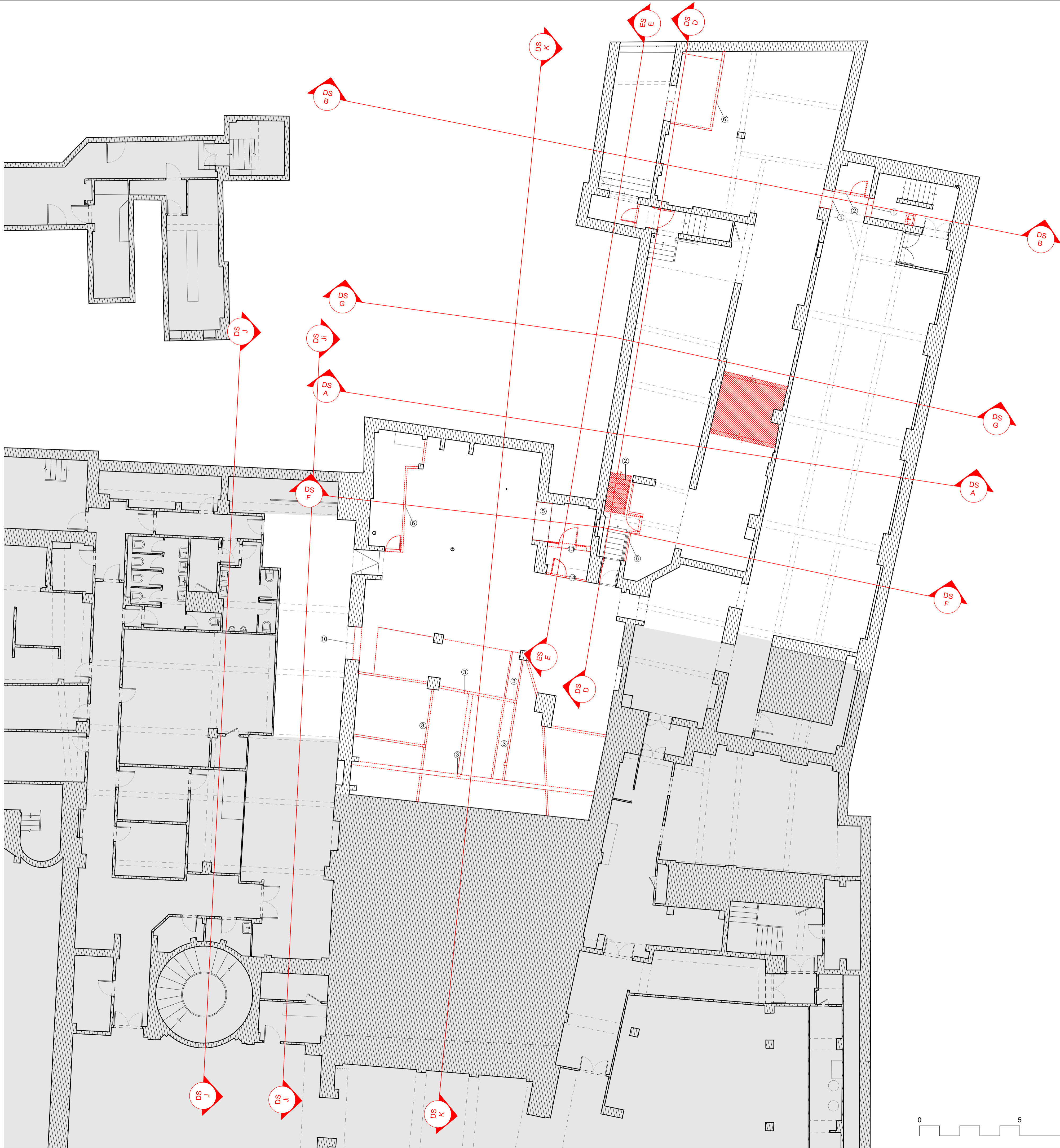
DATE
June 2022

DWG No.
1215_PL3ii-DP-01 P1

STATUS
PLANNING

REVISION

APPROVED
NJ



GENERAL NOTES.

© Buckley Gray Yeoman Limited

All dimensions to be checked on site prior to commencement of any works, and/or preparation of any shop drawings.

Sizes of and dimensions to any structural elements are indicative only. See structural engineers drawings for actual sizes / dimensions.

Sizes of and dimensions to any service elements are indicative only. See service engineers drawings for actual sizes and dimensions.

This drawing to be read in conjunction with all other Architect's drawings, specifications and other Consultants' information.

All proprietary systems shown on this drawing are to be installed strictly in accordance with the Manufacturers/Suppliers recommended details.

Any discrepancies between information shown on this drawing and any other contract information or manufacturers/suppliers recommendations is to be brought to the attention of the Architect

DO NOT SCALE FROM THIS DRAWING.

NOTES.

Schedule of Works

- Existing structural wall opened up to form access to fire escape stair
- Careful removal of existing access stair and partitions to form compliant means of escape to Ground Floor
- Careful removal of basement structures that hold up, to be removed stair on Ground floor
- Floor opening up for new access stair in Post-Production Studio
- Removal of bricked up window, and existing fenestration in Courtyard
- Careful removal of modern partitioning and non-structural elements to open up spaces
- Careful removal of existing WC arrangement for new WCs
- Opening up in roof structure for ventilation access
- Careful removal of non-structural timber deck in loading bay, to return to main structural slab level
- Careful removal of brick infill to existing brick arch headed doorway
- Careful removal of flooring and associated structure to facilitate staircase demolition. Extent of required removal subject to on site review
- Careful removal of existing staircase
- Demolish existing lean to including roof, windows and wall structures. Sensitively remove flashing and re-mortar cut ins. Repair and make good any damaged areas.
- Remove thin partition in existing opening and make good reveals to form an opening for new door.
- Retention of existing floor finishes for reuse, to be investigated

Demolition of partitions

Removal of surface finishes

Removal of structures

AREA OUTSIDE OF SCOPE OF THIS APPLICATION

P1 06/06/22 Issued for Planning

REV. DATE NOTE

DRAWN

BGY

BUCKLEY GRAY YEOMAN
+ 44 20 7033 9913
BGY.CO.UK

CLIENT

General Projects

PROJECT

Heals Building

DRAWING

**Demolition Plan
Basement Floor**

SCALE

1:100 @ A1

1:200 @ A3

DATE

June 2022

DWG No.

1215_PL3ii-DP-B1 P1

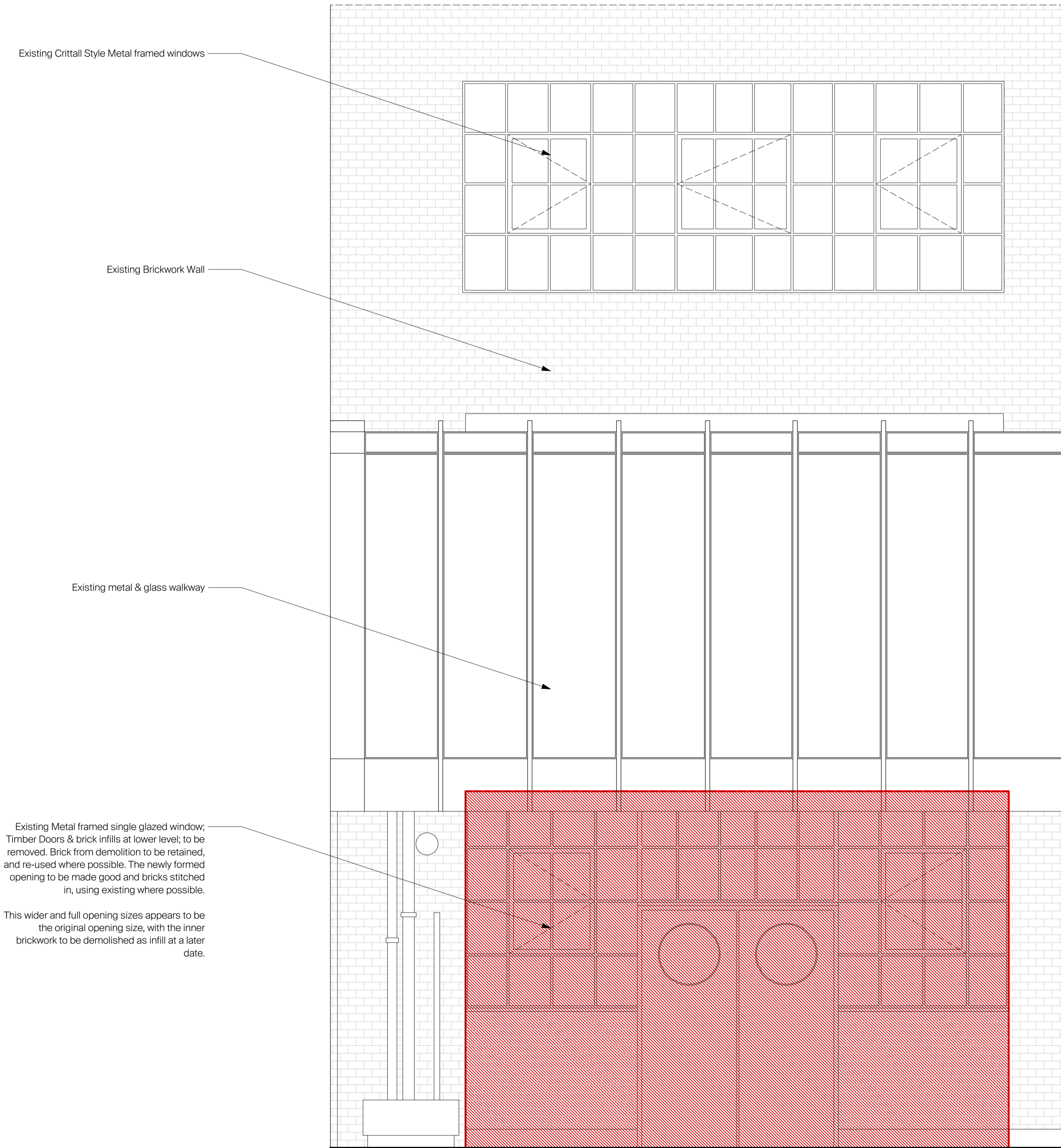
REVISION

STATUS

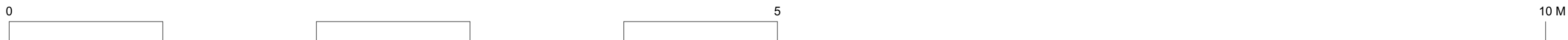
PLANNING

APPROVED

NJ



1 Existing Courtyard South West Elevation
Scale: 1:25



GENERAL NOTES.

© Buckley Gray Yeoman Limited

All dimensions to be checked on site prior to commencement of any works, and/or preparation of any shop drawings.

Sizes of and dimensions to any structural elements are indicative only. See structural engineers drawings for actual sizes / dimensions.

Sizes of and dimensions to any service elements are indicative only. See service engineers drawings for actual sizes and dimensions.

This drawing to be read in conjunction with all other Architect's drawings, specifications and other Consultants' information.

All proprietary systems shown on this drawing are to be installed strictly in accordance with the Manufacturers/Suppliers recommended details.

Any discrepancies between information shown on this drawing and any other contract information or manufacturers/suppliers recommendations is to be brought to the attention of the Architect

DO NOT SCALE FROM THIS DRAWING.

NOTES.

AREA OUTSIDE OF SCOPE OF THIS APPLICATION

Demolition of partitions

Removal of surface finishes

Removal of Structural Elements

P1 06/06/22 Issued for Planning

REV. DATE NOTE

DRAWN

BGY

BUCKLEY GRAY YEOMAN
+ 44 20 7033 9913
BGY.CO.UK

CLIENT

General Projects

PROJECT

Heals Building

DRAWING

**Demolition
Courtyard SW Elevation**

SCALE

1:25 @ A1

1:50 @ A3

DATE

June 2022

DWG No.

1215_PL3ii-GE-11 P1

REVISION

STATUS

PLANNING

APPROVED

NJ



3 Existing Courtyard South East Elevation
Scale: 1:25

GENERAL NOTES.

© Buckley Gray Yeoman Limited

All dimensions to be checked on site prior to commencement of any works, and/or preparation of any shop drawings.

Sizes of and dimensions to any structural elements are indicative only. See structural engineers drawings for actual sizes / dimensions.

Sizes of and dimensions to any service elements are indicative only. See service engineers drawings for actual sizes and dimensions.

This drawing to be read in conjunction with all other Architect's drawings, specifications and other Consultants' information.

All proprietary systems shown on this drawing are to be installed strictly in accordance with the Manufacturers/Suppliers recommended details.

Any discrepancies between information shown on this drawing and any other contract information or manufacturers/suppliers recommendations is to be brought to the attention of the Architect

DO NOT SCALE FROM THIS DRAWING.

NOTES.

AREA OUTSIDE OF SCOPE OF THIS APPLICATION

Demolition of partitions

Removal of surface finishes

Removal of Structural Elements

P1 06/06/22 Issued for Planning

REV. DATE NOTE

DRAWN

BGY

BUCKLEY GRAY YEOMAN
+ 44 20 7033 9913
BGY.CO.UK

CLIENT

General Projects

PROJECT

Heals Building

DRAWING

**Demolition
Courtyard SE Elevation**

SCALE

1:25 @ A1

1:50 @ A3

DATE

June 2022

DWG No.

1215_PL3ii-GE-12 P1

REVISION

STATUS

PLANNING

APPROVED

NJ