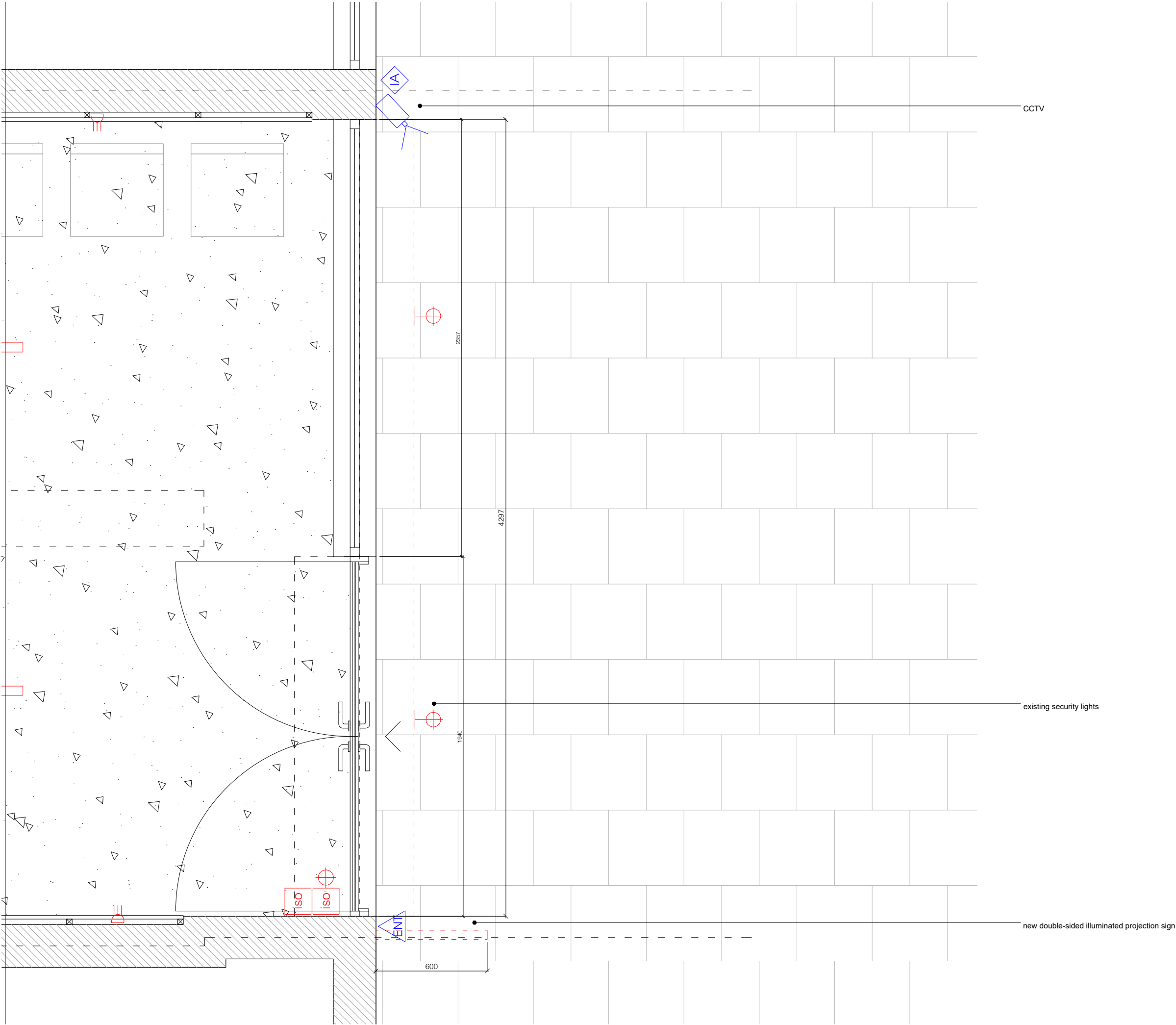
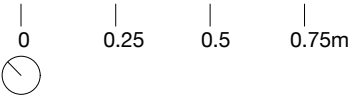


REVISIONS		
REV. DATE	AMENDMENT	
P1	2022.06.30	Issued for Planning



KEY	
	1-way switch
	2-way switch
	3-way switch
	Dimmer switch
	Fused spur for appliance
	13A switched socket outlet - 2 gang
	13A switched socket outlet - 2 gang - usb
	13A unswitched socket outlet - 2 gang
	13A switched socket outlet - 1 gang
	Floor outlet
	5A fused outlet
	Shaver socket
	Pendant light fitting
	F/R mains GU10 downlighter (recessed)
	F/R mains GU10 (surfaced-mounted)
	IP-rated downlight (recessed)
	IP-rated downlight (surface mounted)
	Wall-mounted light
	IP-rated wall-mounted light
	Floor recessed uplighters
	Extractor fan
	Smoke detector
	Heat detector
	Smoke and heat detector
	Inground light
	Data connection
	Iso switch
	Hot + cold water supply
	Landline socket
	Satellite TV
	Electric car charger
	Air conditioner
	CCTV
	Modem router
	Wi-fi repeater
	Speaker
	Thermostatic heating control
	Worktop pop-up outlet
	Grill switch panel
	Terrestrial TV outlet
	Fire curtain manual override button
	Intrusion alarm
	Emergency lighting
	Door bell push
	Mains circuit breaker
	Sprinkler - wall or ceiling mounted
	Roof ventilator
	Fused spur
	CAT6 socket appliance
	Entry phone system
	Mist fire suppression nozzle
	BT master socket
	13A 2-Gang Switched Outdoor Socket IP66
	PIR eye switch