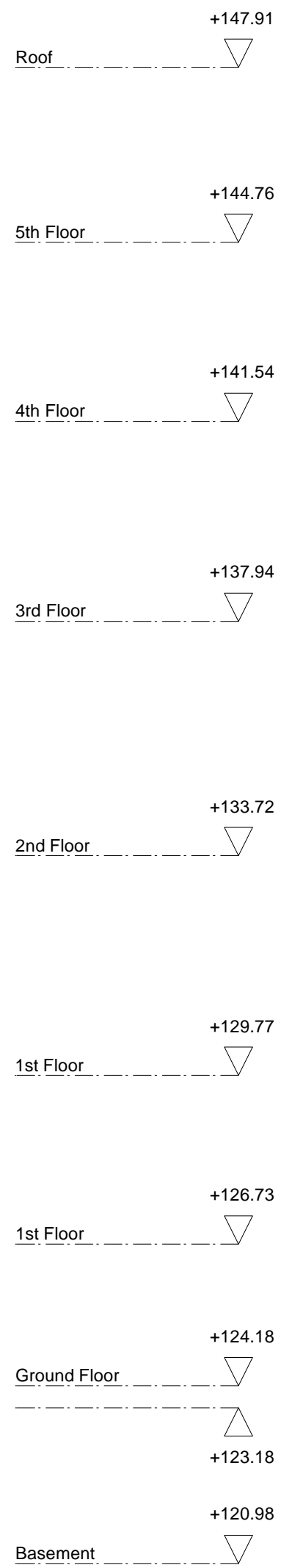
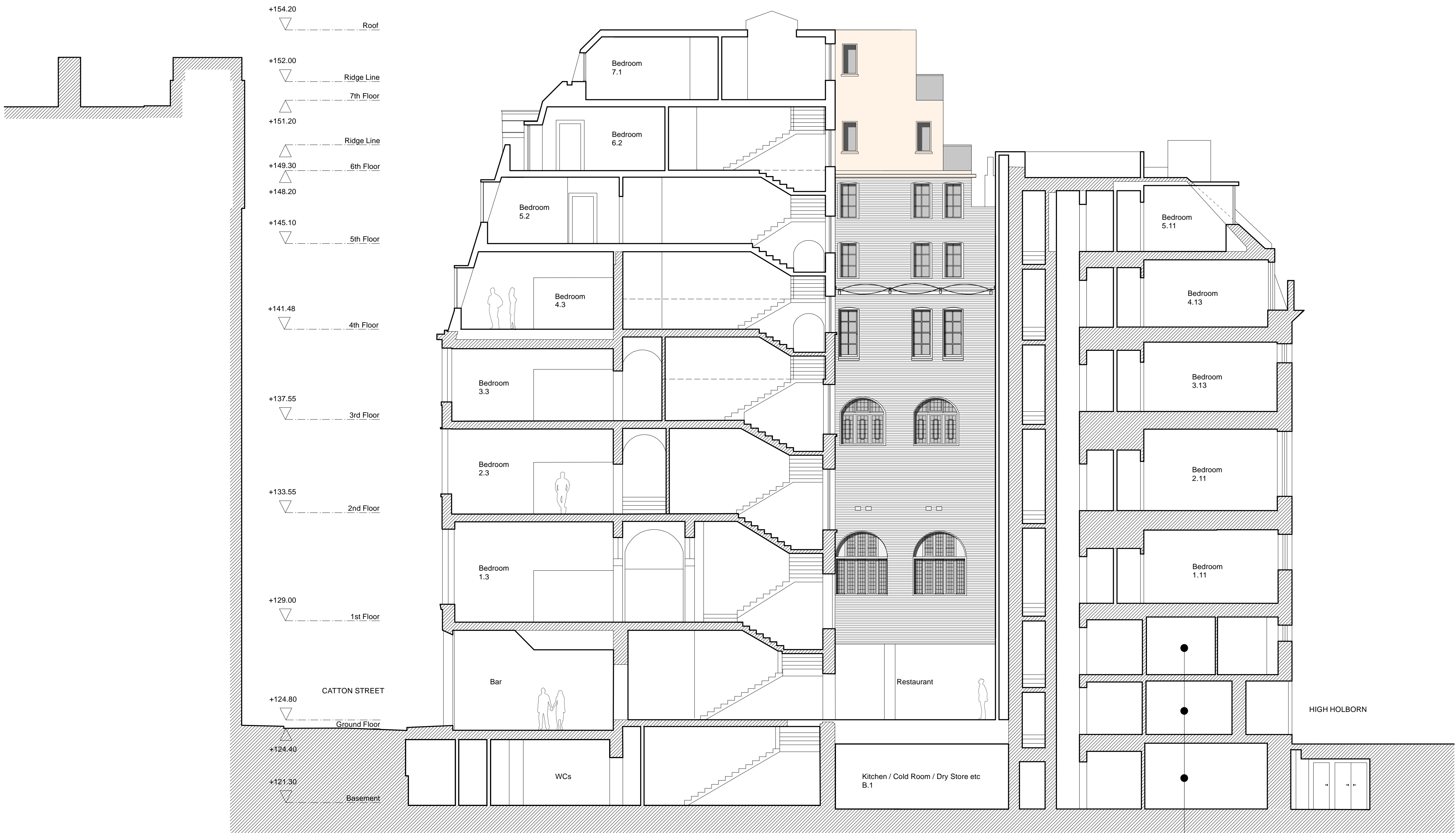
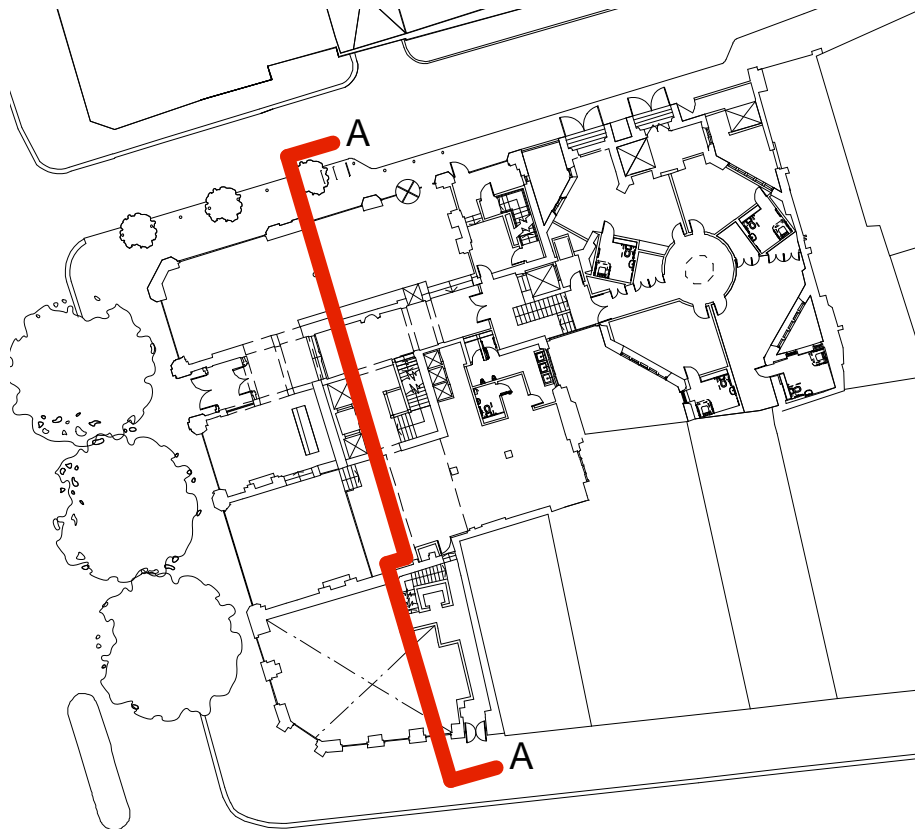


Notes

All setting out must be checked on site
All levels must be checked on site
All fixings and weathersings must be checked on site
All dimensions must be checked on site
This drawing must not be scaled
This drawing must be read in conjunction with the relevant specification clauses
This drawing must not be used on site unless issued for construction



Key

Existing Retained Fabric

Basement, Ground and Mezzanine Levels of 118-120 High Holborn are not in client's demise.

B Planning Issue 05/10/07
A General amendments 11/08/07

Revisions

hd

Harper, Downie

design architecture

Gate House

No1 St John's Square

London EC1M 4DH

T +44(0)20 7490 76 74

F +44(0)20 7490 46 41

E studio@harperdownie.com

www.harperdownie.com

Client Kingsgate London Properties Ltd

Project 2-6 Southampton Row
118-120 High Holborn

Drawing title Proposed Section AA

Scale A1 - 1:100, A3-1:200 Dwg. No. Rev

Date 14/06/07 467GS01 B

Status Information Tender Construction Record

Do not scale from this drawing. All dimensions are to be checked on site.
Issued for purposes indicated only. Information contained within this drawing is the sole copyright of Harper, Downie Ltd. and is not to be reproduced without express permission.