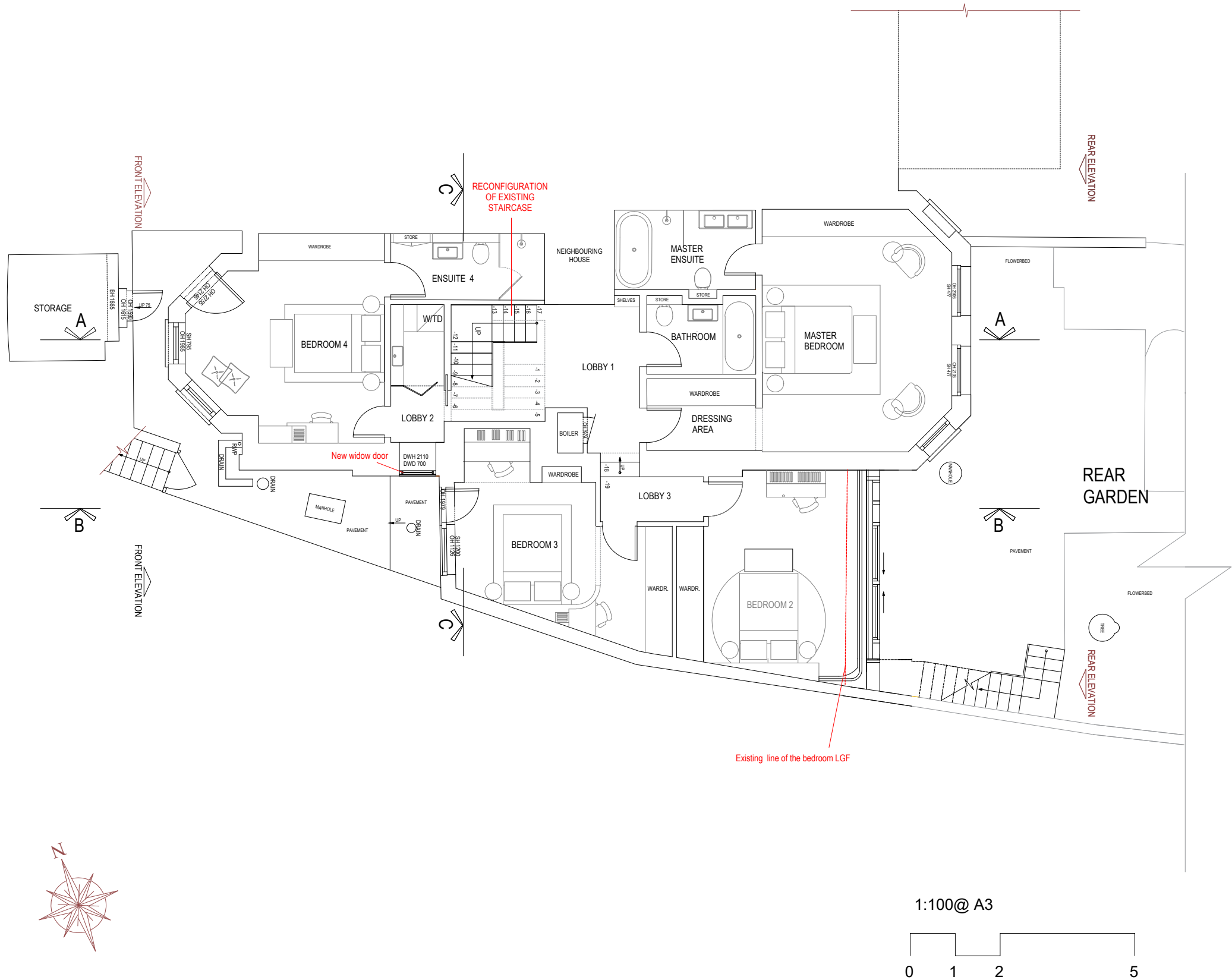


GENERAL NOTES:

This drawing is copyright of KSR architects. This drawing must be read in conjunction with the Designer's Risk Assessment, specification and all other relevant documentation and drawings. KSR architects accept no liability for any expense, loss or damage of whatsoever nature and however arising from any variation made to this drawing or in the execution of the work to which it relates which has not been referred to them and their approval obtained. Areas are based on unchecked survey and are approximate only. Do not scale from this drawing or the digital data, only figured dimensions are to be used. Refer to linear scale for guidance. Check all dimensions on site prior to carrying out any works and advise any discrepancy



Rev. A 24/11/2021 Review Rear El.  
Rev. B 21/02/2022 Reduce Terrace Extension  
Rev. C 07/03/2022 Review Design Side El. Window

Status:PLANNING APPLICATION

**KSR** ARCHITECTS &  
INTERIOR DESIGNERS  
KSR Architects LLP mail@ksrarchitects.com  
14 Greenland Street t: +44 (0)20 7692 5000  
London NW1 0ND www.ksrarchitects.com

FLAT 2, 16 LYNDHURST GARDENS - HAMPSTEAD

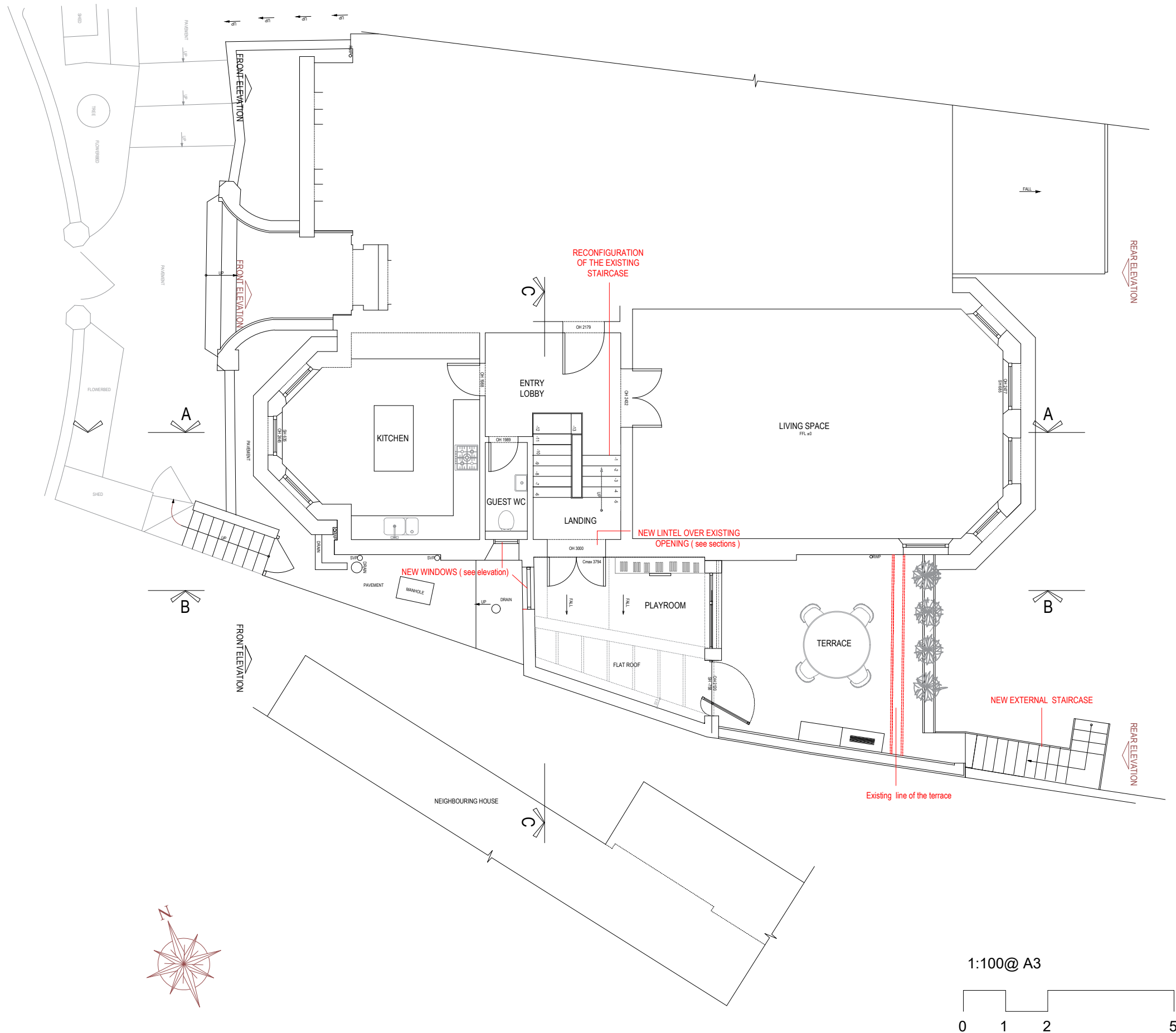
PROPOSED LGF PLAN

Date 11/05/2021 Scale:1:100 @A3

Drawn By:OC Checked By:RS

Project Ref. 20041 Rev. C  
Drawing No 1-PA-101

© KSR ARCHITECTS & INTERIOR DESIGNERS



#### GENERAL NOTES:

This drawing is copyright of KSR architects. This drawing must be read in conjunction with the Designer's Risk Assessment, specification and all other relevant documentation and drawings. KSR architects accept no liability for any expense, loss or damage of whatsoever nature and however arising from any variation made to this drawing or in the execution of the work to which it relates which has not been referred to them and their approval obtained.

Areas are based on unchecked survey and are approximate only. Do not scale from this drawing or the digital data, only figured dimensions are to be used. Refer to linear scale for guidance. Check all dimensions on site prior to carrying out any works and advise any discrepancy

Rev. A 24/11/2021 Review Rear EI.  
Rev. B 21/02/2022 Reduce Terrace Extension  
Rev. C 07/03/2022 Review Design Side EI. Window

Status:PLANNING APPLICATION

**KSR** ARCHITECTS &  
INTERIOR DESIGNERS

KSR Architects LLP mail@ksrarchitects.com  
14 Greenland Street t: +44 (0)20 7692 5000  
London NW1 0ND www.ksrarchitects.com

FLAT 2, 16 LYNDHURST GARDENS - HAMPSTEAD

PROPOSED GF PLAN

Date 11/05/2021

Scale:1:100 @A3

Drawn By:OC

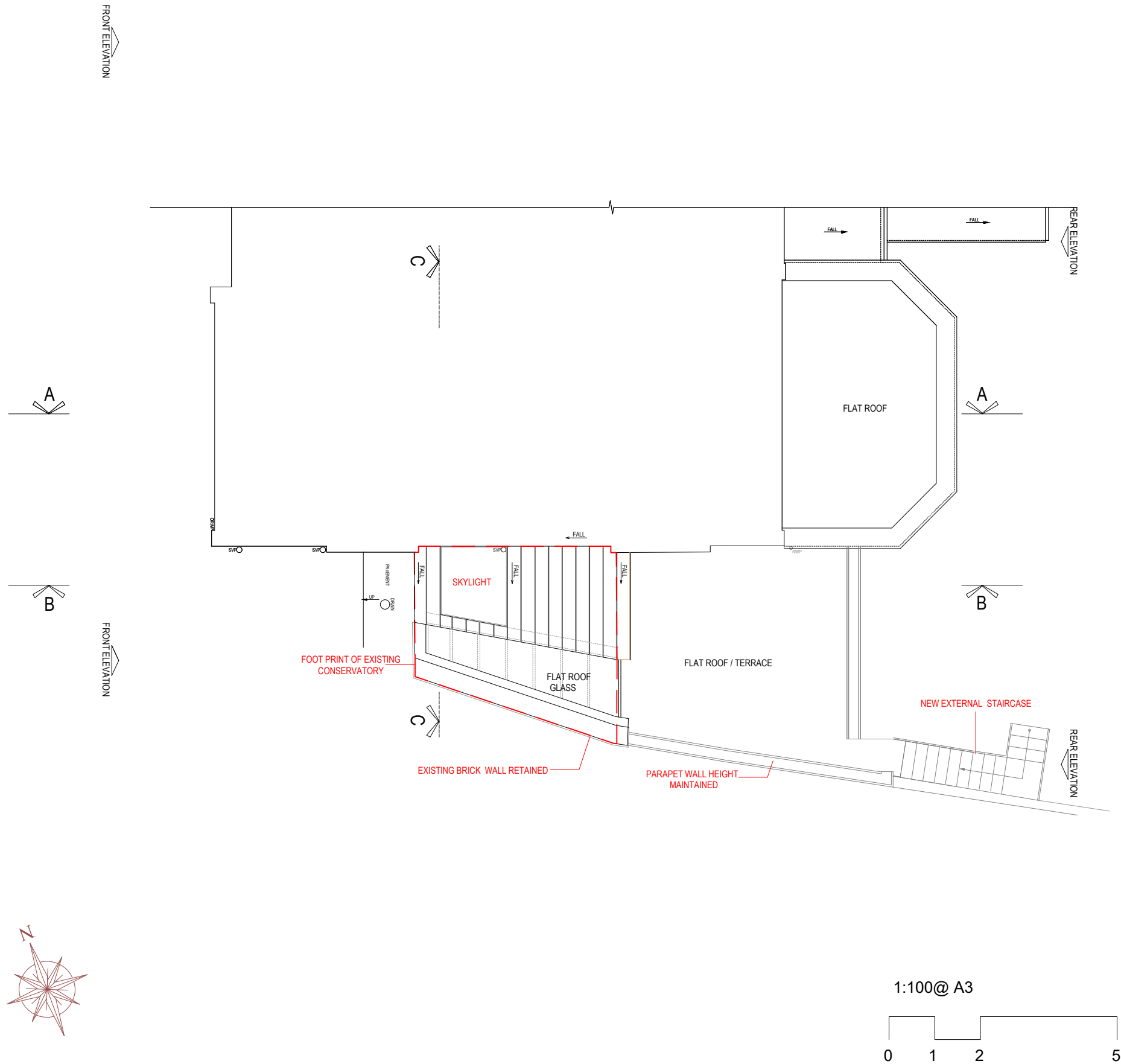
Checked By:RS

Project Ref. 20041

Rev. C

Drawing No 1-PA-102

© KSR ARCHITECTS & INTERIOR DESIGNERS



GENERAL NOTES:

This drawing is copyright of KSR architects. This drawing must be read in conjunction with the Designer's Risk Assessment, specification and all other relevant documentation and drawings. KSR architects accept no liability for any expense, loss or damage of whatsoever nature and however arising from any variation made to this drawing or in the execution of the work to which it relates which has not been referred to them and their approval obtained. Areas are based on unchecked survey and are approximate only. Do not scale from this drawing or the digital data, only figured dimensions are to be used. Refer to linear scale for guidance. Check all dimensions on site prior to carrying out any works and advise any discrepancy

Rev. A 24/11/2021 Review Rear El.  
Rev. B 21/02/2022 Reduce Terrace Extension  
Rev. C 07/03/2022 Review Design Side El. Window

Status:PLANNING APPLICATION

**KSR** ARCHITECTS & INTERIOR DESIGNERS  
KSR Architects LLP mail@ksrarchitects.com  
14 Greenland Street t: +44 (0)20 7692 5000  
London NW1 0ND www.ksrarchitects.com

FLAT 2, 16 LYNDHURST GARDENS - HAMPSTEAD

PROPOSED ROOF PLAN  
(SIDE EXTENSION)

Date 11/05/2021

Scale:1:100 @A3

Drawn By:OC

Checked By:RS

Project Ref. 20041

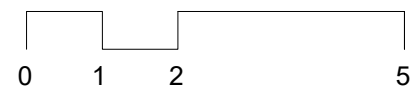
Rev. C

Drawing No 1-PA-103

© KSR ARCHITECTS & INTERIOR DESIGNERS



1:100@ A3



#### GENERAL NOTES:

This drawing is copyright of KSR architects. This drawing must be read in conjunction with the Designer's Risk Assessment, specification and all other relevant documentation and drawings. KSR architects accept no liability for any expense, loss or damage of whatsoever nature and however arising from any variation made to this drawing or in the execution of the work to which it relates which has not been referred to them and their approval obtained. Areas are based on unchecked survey and are approximate only. Do not scale from this drawing or the digital data, only figured dimensions are to be used. Refer to linear scale for guidance. Check all dimensions on site prior to carrying out any works and advise any discrepancy

Rev. A 24/11/2021 Review Rear El.  
Rev. B 21/02/2022 Reduce Terrace Extension  
Rev. C 07/03/2022 Review Design Side El. Window

Status:PLANNING APPLICATION

**KSR** ARCHITECTS &  
INTERIOR DESIGNERS  
KSR Architects LLP mail@ksrarchitects.com  
14 Greenland Street t: +44 (0)20 7692 5000  
London NW1 0ND www.ksrarchitects.com

FLAT 2, 16 LYNDBURST GARDENS - HAMPSTEAD

#### PROPOSED REAR ELEVATION (SIDE EXTENSION)

Date 11/05/2021 Scale:1:100 @A3

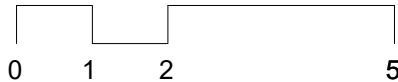
Drawn By:OC Checked By:RS

Project Ref. 20041 Rev. C  
Drawing No 2-PA-201

© KSR ARCHITECTS & INTERIOR DESIGNERS



1:100@ A3



GENERAL NOTES:

This drawing is copyright of KSR architects. This drawing must be read in conjunction with the Designer's Risk Assessment, specification and all other relevant documentation and drawings. KSR architects accept no liability for any expense, loss or damage of whatsoever nature and however arising from any variation made to this drawing or in the execution of the work to which it relates which has not been referred to them and their approval obtained. Areas are based on unchecked survey and are approximate only. Do not scale from this drawing or the digital data, only figured dimensions are to be used. Refer to linear scale for guidance. Check all dimensions on site prior to carrying out any works and advise any discrepancy

Rev. A 24/11/2021 Review Rear El.  
Rev. B 21/02/2022 Reduce Terrace Extension  
Rev. C 07/03/2022 Review Design Side El. Window

Status:PLANNING APPLICATION

**KSR** ARCHITECTS &  
INTERIOR DESIGNERS  
KSR Architects LLP mail@ksrarchitects.com  
14 Greenland Street t: +44 (0)20 7692 5000  
London NW1 0ND www.ksrarchitects.com

FLAT 2, 16 LYNDHURST GARDENS - HAMPSTEAD

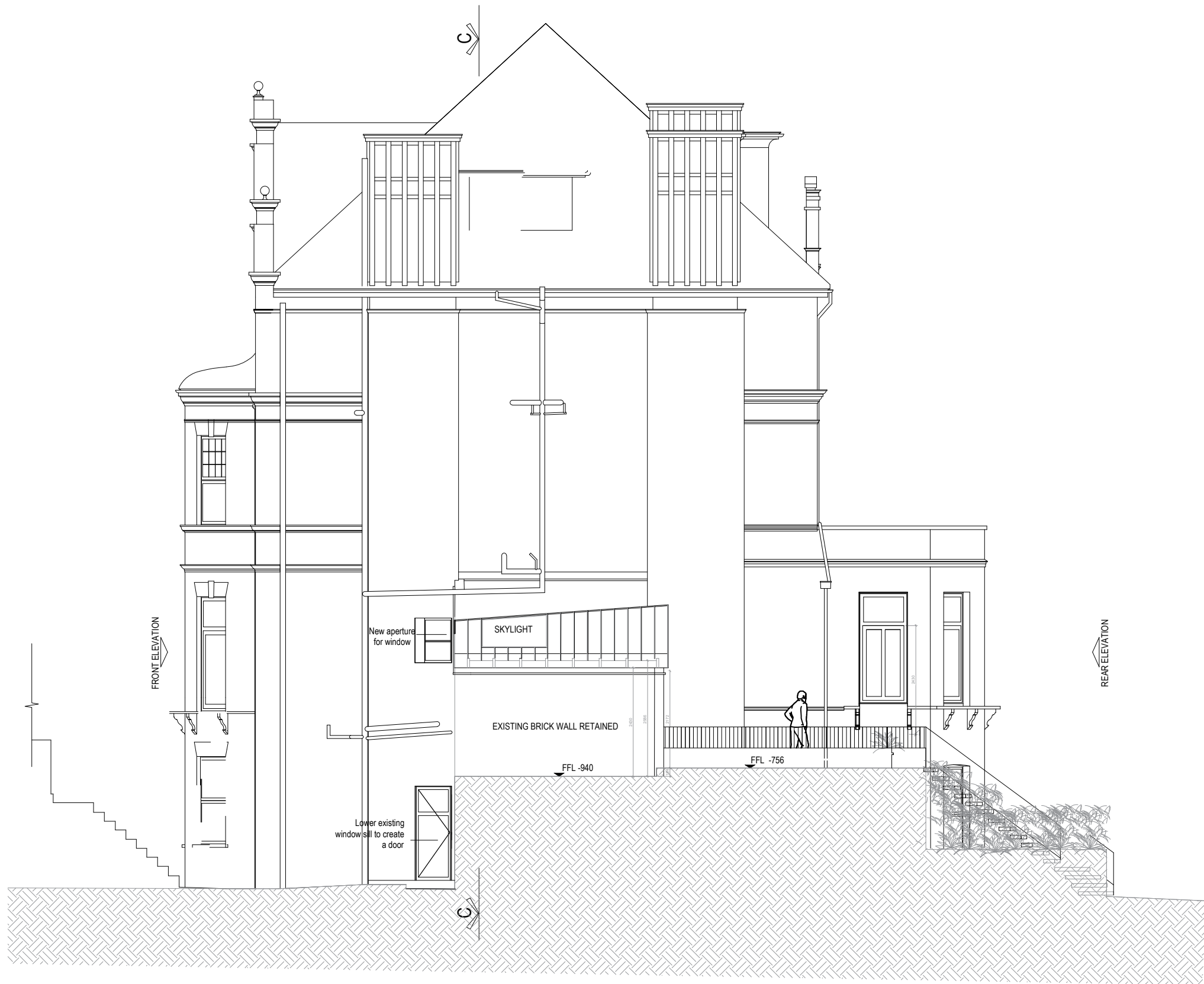
PROPOSED FRONT ELEVATION  
(SIDE EXTENSION)

Date 11/05/2021 Scale:1:100 @A3

Drawn By:OC Checked By:RS

Project Ref. 20041 Rev. C  
Drawing No 2-PA-202

© KSR ARCHITECTS & INTERIOR DESIGNERS



GENERAL NOTES:

This drawing is copyright of KSR architects. This drawing must be read in conjunction with the Designer's Risk Assessment, specification and all other relevant documentation and drawings. KSR architects accept no liability for any expense, loss or damage of whatsoever nature and however arising from any variation made to this drawing or in the execution of the work to which it relates which has not been referred to them and their approval obtained. Areas are based on unchecked survey and are approximate only. Do not scale from this drawing or the digital data, only figured dimensions are to be used. Refer to linear scale for guidance. Check all dimensions on site prior to carrying out any works and advise any discrepancy

Rev. A 24/11/2021 Review Rear El.  
Rev. B 21/02/2022 Reduce Terrace Extension  
Rev. C 07/03/2022 Review Design Side El. Window

Status:PLANNING APPLICATION

**KSR** ARCHITECTS &  
INTERIOR DESIGNERS

KSR Architects LLP mail@ksrarchitects.com  
14 Greenland Street t: +44 (0)20 7692 5000  
London NW1 0ND www.ksrarchitects.com

FLAT 2, 16 LYNDRURST GARDENS - HAMPSTEAD

PROPOSED SIDE ELEVATION

Date 11/05/2021

Scale:1:100 @A3

Drawn By:OC

Checked By:RS

Project Ref. 20041

Rev. C

Drawing No 2-PA-203

© KSR ARCHITECTS & INTERIOR DESIGNERS

**GENERAL NOTES:**

This drawing is copyright of KSR architects. This drawing must be read in conjunction with the Designer's Risk Assessment, specification and all other relevant documentation and drawings. KSR architects accept no liability for any expense, loss or damage of whatsoever nature and however arising from any variation made to this drawing or in the execution of the work to which it relates which has not been referred to them and their approval obtained. Areas are based on unchecked survey and are approximate only. Do not scale from this drawing or the digital data, only figured dimensions are to be used. Refer to linear scale for guidance. Check all dimensions on site prior to carrying out any works and advise any discrepancy

**Materials:**

- 1 Bronzed metal aluminium roof
- 2 Wooden Slats
- 3 Light-bronze window frame
- 4 Light-bronze aluminium
- 5 Existing red brick
- 6 Parapet to match existing red-brick
- 7 Glass
- 8 Wood
- 9 Metal balustrade
- 10 Metal balustrade with wood handle

Existing brick wall retained

Rain pipe finish to match bronze material

Existing metal balustrade style on boundary wall

Lightwell staircase metal balustrade with wood handle



1:50@ A3 - PROPOSED REAR ELEVATION



Status: PLANNING APPLICATION

**KSR ARCHITECTS & INTERIOR DESIGNERS**  
KSR Architects LLP  
14 Oldfield Street  
London W1T 0ND  
info@ksrarchitects.com  
020 7440 0500  
www.ksrarchitects.com

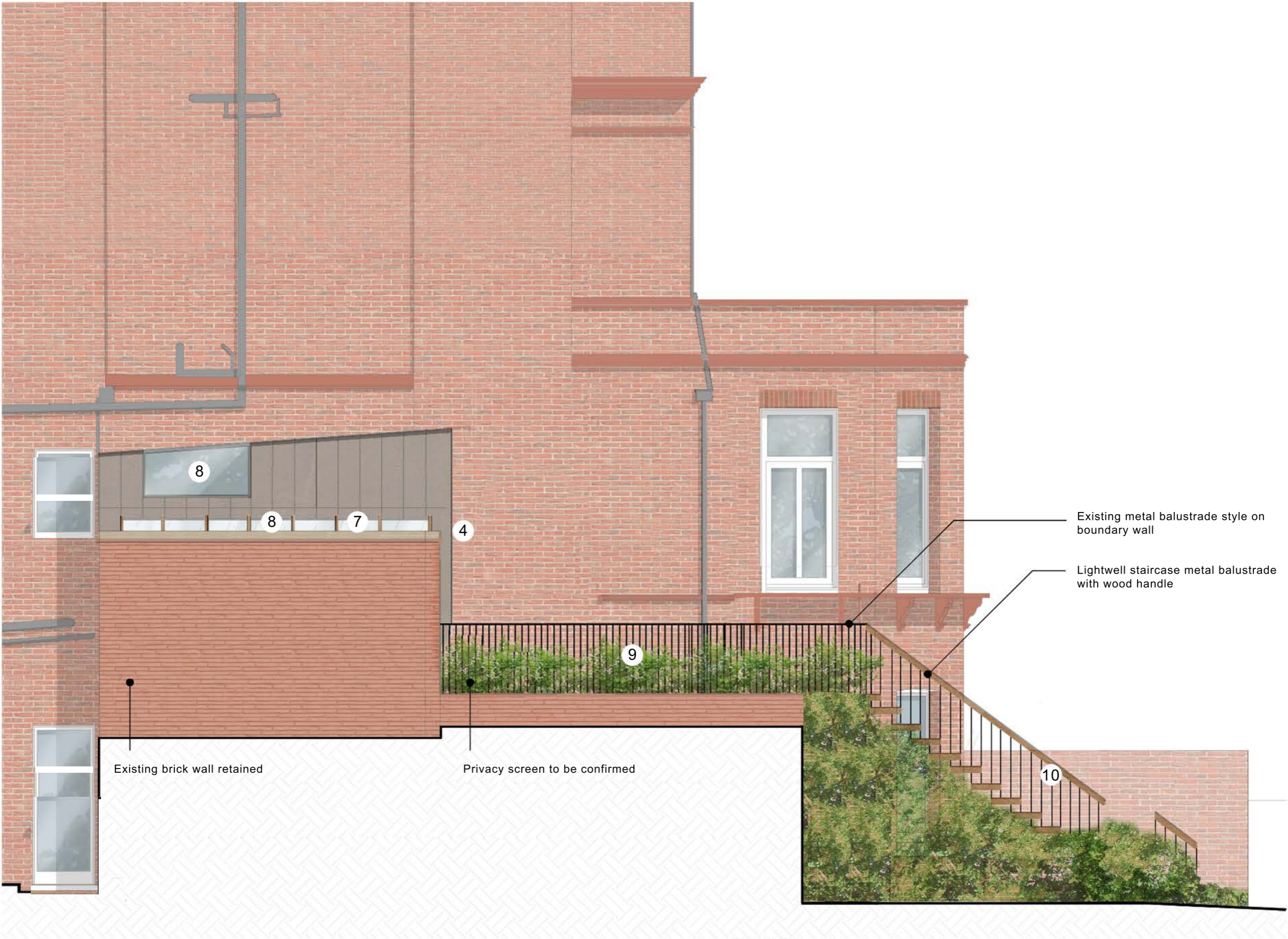
FLAT 2, 16 LYNTHURST GARDENS - HAMPSTEAD

**PROPOSED REAR ELEVATION - MATERIALS**

Date: 24/11/2021 Scale: 1:50 @ A3

Drawn By: OC Checked By: RS

Project Ref: 20041 REV. C  
Drawing No 2-PA-204



GENERAL NOTES:

This drawing is copyright of KSR architects. This drawing must be read in conjunction with the Designer's Risk Assessment, specification and all other relevant documentation and drawings. KSR architects accept no liability for any expense, loss or damage of whatsoever nature and however arising from any variation made to this drawing or in the execution of the work to which it relates which has not been referred to them and their approval obtained. Areas are based on unchecked survey and are approximate only. Do not scale from this drawing or the digital data, only figured dimensions are to be used. Refer to linear scale for guidance. Check all dimensions on site prior to carrying out any works and advise any discrepancy

Materials:

- 1 Bronzed metal aluminium roof
- 2 Wooden Slats
- 3 Light-bronze window frame
- 4 Light-bronze aluminium
- 5 Existing red brick
- 6 Parapet to match existing red-brick
- 7 Glass
- 8 Wood
- 9 Metal balustrade
- 10 Metal balustrade with wood handle

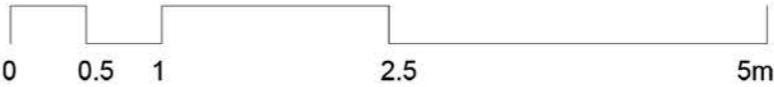
Existing metal balustrade style on boundary wall

Lightwell staircase metal balustrade with wood handle

Existing brick wall retained

Privacy screen to be confirmed

1:50@ A3 - PROPOSED SIDE ELEVATION



Status:PLANNING APPLICATION

**KSR** ARCHITECTS & INTERIOR DESIGNERS

KSR Architects LLP  
14 Greenland Street  
London NW1 0ND

mail@ksrarchitects.com  
t: +44 (0)20 7692 5000  
www.ksrarchitects.com

FLAT 2, 16 LYNDRURST GARDENS - HAMPSTEAD

PROPOSED SIDE ELEVATION - MATERIALS

Date:24/11/2021

Scale:1:50 @A3

Drawn By:OC

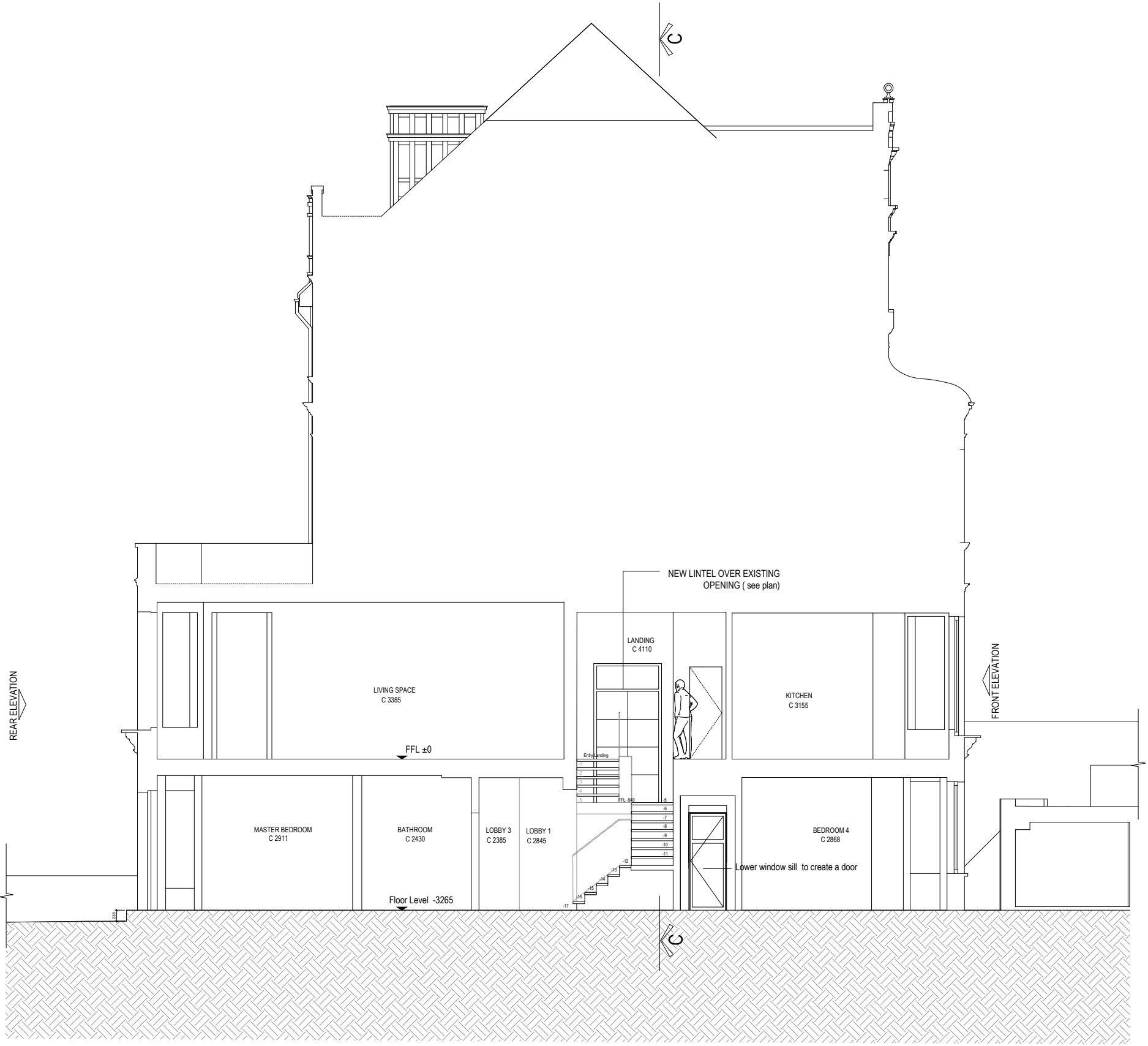
Checked By:RS

Project Ref. 20041

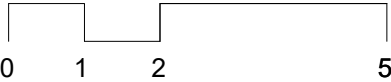
Rev. C

Drawing No 2-PA-205

© KSR ARCHITECTS & INTERIOR DESIGNERS



1:100@ A3



GENERAL NOTES:

This drawing is copyright of KSR architects. This drawing must be read in conjunction with the Designer's Risk Assessment, specification and all other relevant documentation and drawings. KSR architects accept no liability for any expense, loss or damage of whatsoever nature and however arising from any variation made to this drawing or in the execution of the work to which it relates which has not been referred to them and their approval obtained. Areas are based on unchecked survey and are approximate only. Do not scale from this drawing or the digital data, only figured dimensions are to be used. Refer to linear scale for guidance. Check all dimensions on site prior to carrying out any works and advise any discrepancy

Rev. A 24/11/2021 Review Rear El.  
Rev. B 21/02/2022 Reduce Terrace Extension  
Rev. C 07/03/2022 Review Design Side El. Window

Status:PLANNING APPLICATION

**KSR** ARCHITECTS &  
INTERIOR DESIGNERS  
KSR Architects LLP mail@ksrarchitects.com  
14 Greenland Street t: +44 (0)20 7692 5000  
London NW1 0ND www.ksrarchitects.com

FLAT 2, 16 LYNDBURST GARDENS - HAMPSTEAD  
PROPOSED SECTION AA

Date 11/05/2021 Scale:1:100 @A3

Drawn By:OC Checked By:RS

Project Ref. 20041 Rev. C  
Drawing No 3-PA-301

© KSR ARCHITECTS & INTERIOR DESIGNERS



GENERAL NOTES:

This drawing is copyright of KSR architects. This drawing must be read in conjunction with the Designer's Risk Assessment, specification and all other relevant documentation and drawings. KSR architects accept no liability for any expense, loss or damage of whatsoever nature and however arising from any variation made to this drawing or in the execution of the work to which it relates which has not been referred to them and their approval obtained. Areas are based on unchecked survey and are approximate only. Do not scale from this drawing or the digital data, only figured dimensions are to be used. Refer to linear scale for guidance. Check all dimensions on site prior to carrying out any works and advise any discrepancy

Rev. A 24/11/2021 Review Rear El.  
Rev. B 21/02/2022 Reduce Terrace Extension  
Rev. C 07/03/2022 Review Design Side El. Window

Status:PLANNING APPLICATION

**KSR** ARCHITECTS &  
INTERIOR DESIGNERS  
KSR Architects LLP mail@ksrarchitects.com  
14 Greenland Street t: +44 (0)20 7692 5000  
London NW1 0ND www.ksrarchitects.com

FLAT 2, 16 LYNDBURST GARDENS - HAMPSTEAD

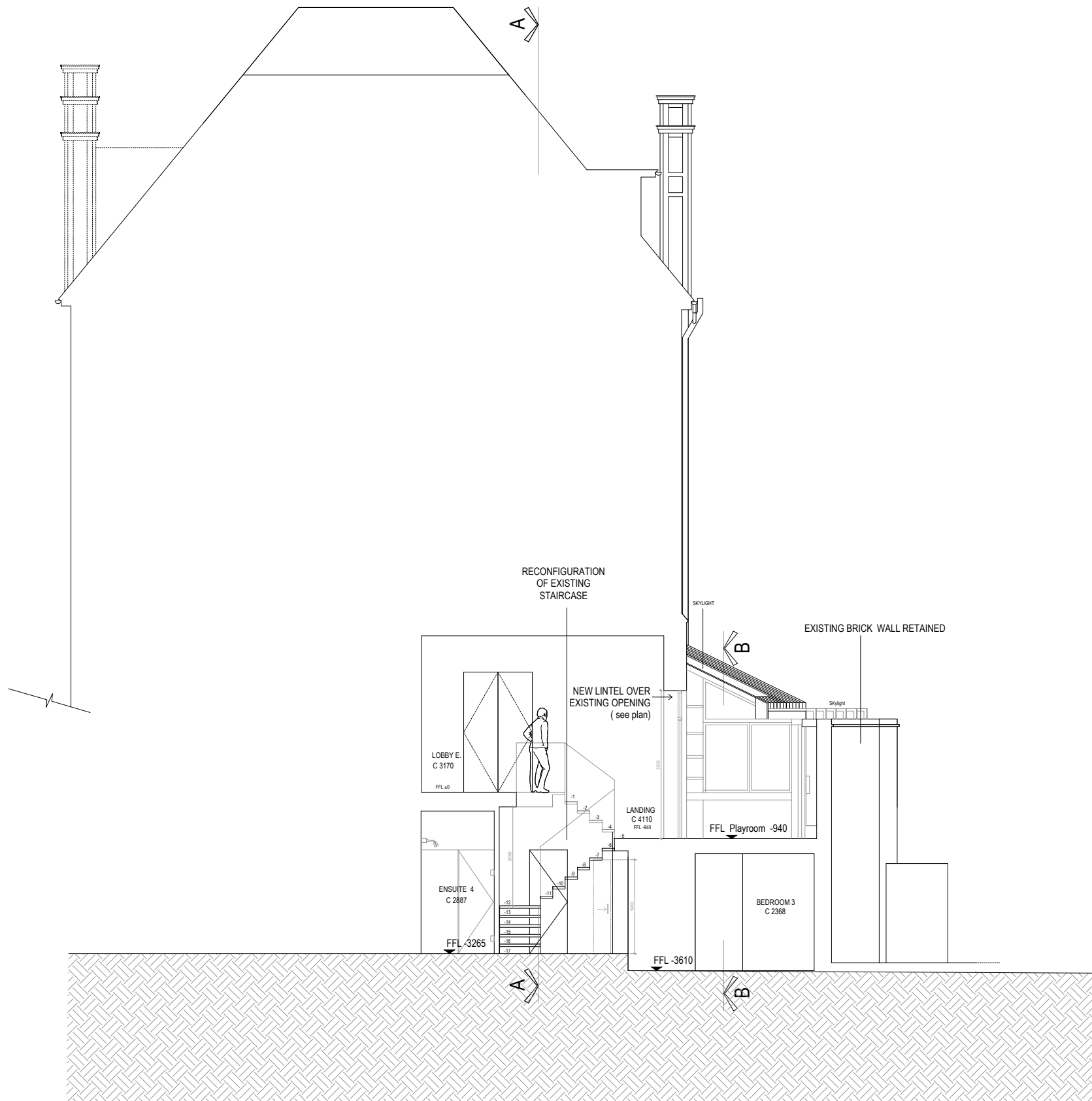
PROPOSED SECTION BB

Date 11/05/2021 Scale:1:100 @A3

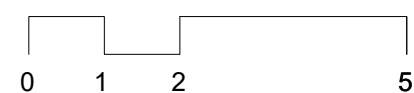
Drawn By:OC Checked By:RS

Project Ref. 20041 Rev. C  
Drawing No 3-PA-302

© KSR ARCHITECTS & INTERIOR DESIGNERS



1:100 @ A3



#### GENERAL NOTES:

This drawing is copyright of KSR architects. This drawing must be read in conjunction with the Designer's Risk Assessment, specification and all other relevant documentation and drawings. KSR architects accept no liability for any expense, loss or damage of whatsoever nature and however arising from any variation made to this drawing or in the execution of the work to which it relates which has not been referred to them and their approval obtained. Areas are based on unchecked survey and are approximate only. Do not scale from this drawing or the digital data, only figured dimensions are to be used. Refer to linear scale for guidance. Check all dimensions on site prior to carrying out any works and advise any discrepancy

Rev. A 24/11/2021 Review Rear EI.  
Rev. B 21/02/2022 Reduce Terrace Extension  
Rev. C 07/03/2022 Review Design Side EI. Window

Status: PLANNING APPLICATION

**KSR** ARCHITECTS &  
INTERIOR DESIGNERS  
KSR Architects LLP mail@ksrarchitects.com  
14 Greenland Street t: +44 (0)20 7692 5000  
London NW1 0ND www.ksrarchitects.com

FLAT 2, 16 LYNDHURST GARDENS - HAMPSTEAD

PROPOSED SECTION CC

Date 11/05/2021 Scale: 1:100 @ A3

Drawn By: OC Checked By: RS

Project Ref. 20041 Rev. C  
Drawing No 3-PA-303

© KSR ARCHITECTS & INTERIOR DESIGNERS