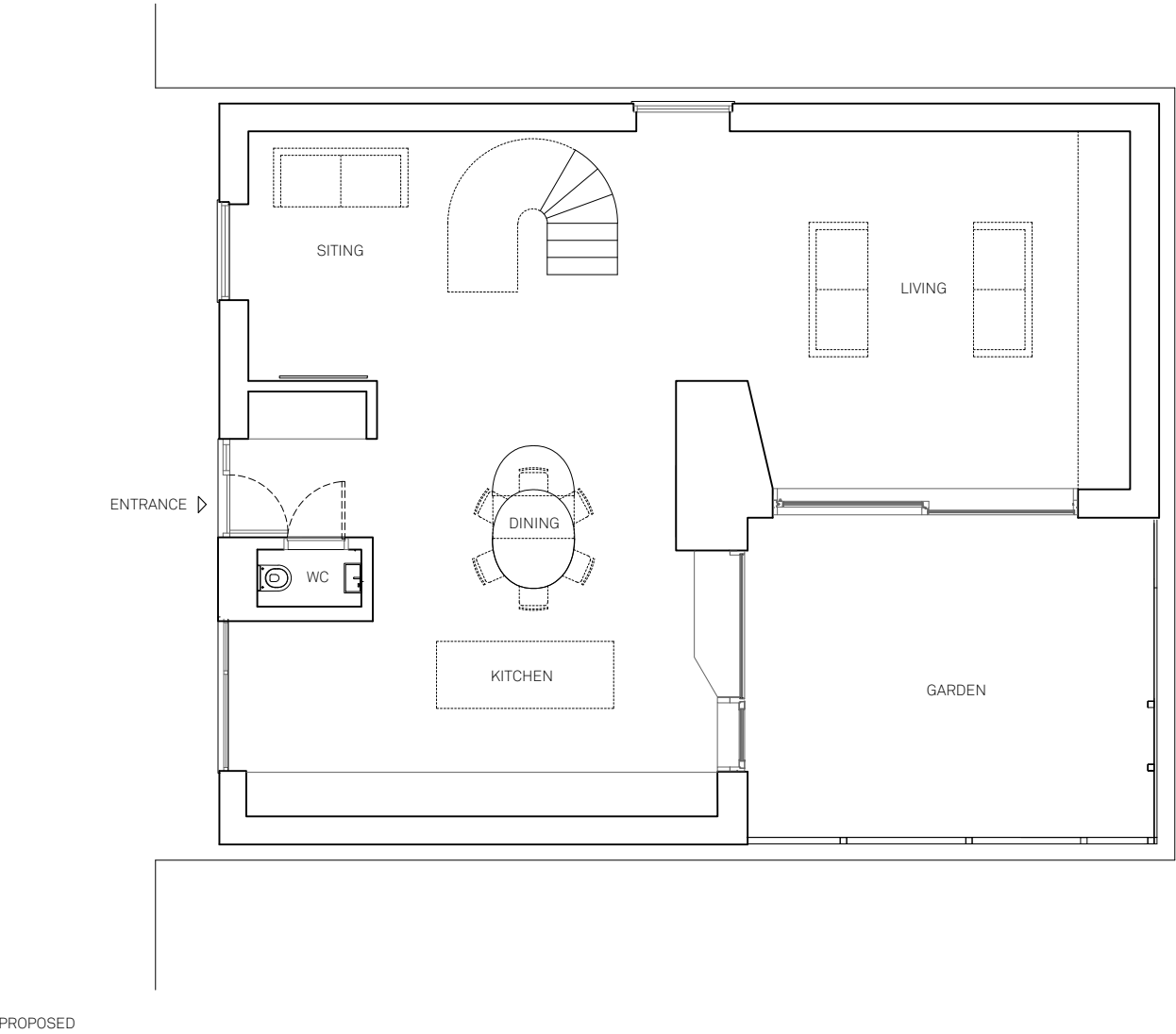
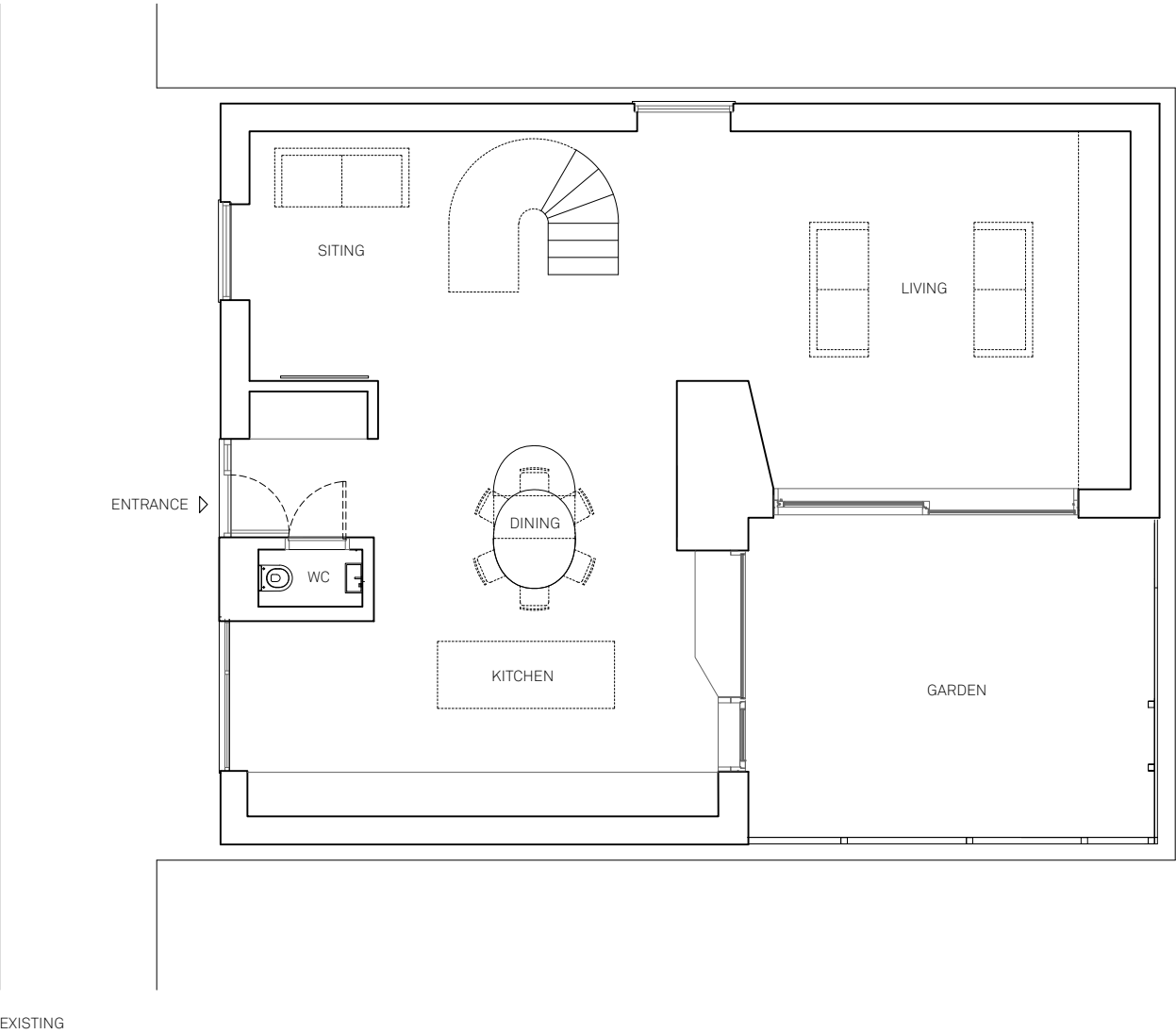


PLANNING KEY

- 01 WHITE PAINTED BRICK AND COPING
- 02 WHITE PAINTED RENDER
- 03 WHITE PAINTED METAL FRAMED TRIPLE GLAZED METAL WINDOW
- 04 WHITE PAINTED METAL BALUSTRADE
- 05 SINGLE PLY MEMBRANE ROOF COVERING
- 06 TRIPLE GLAZED ROOFLIGHT
- 07 WHITE PAINTED TIMBER BOARDING

NB. ALL MATERIALS TO MATCH EXISTING



-	06/07/22	Planning
REV	DATE	DESCRIPTION

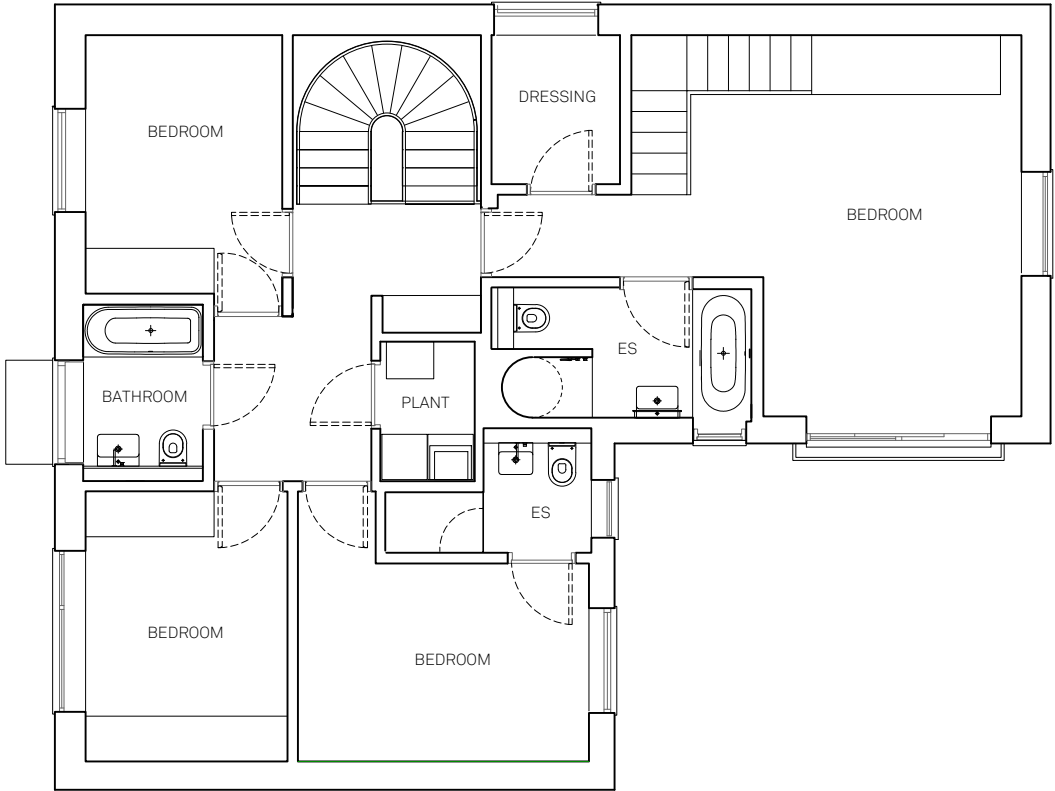


Do not scale for construction. Use figured dimensions only. All discrepancies to be verified with architect prior to ordering or construction/execution. Confirm all setting out with architect prior to construction. Drawing to be read in conjunction with all other documents. Copyright Christian Brailey Architects.

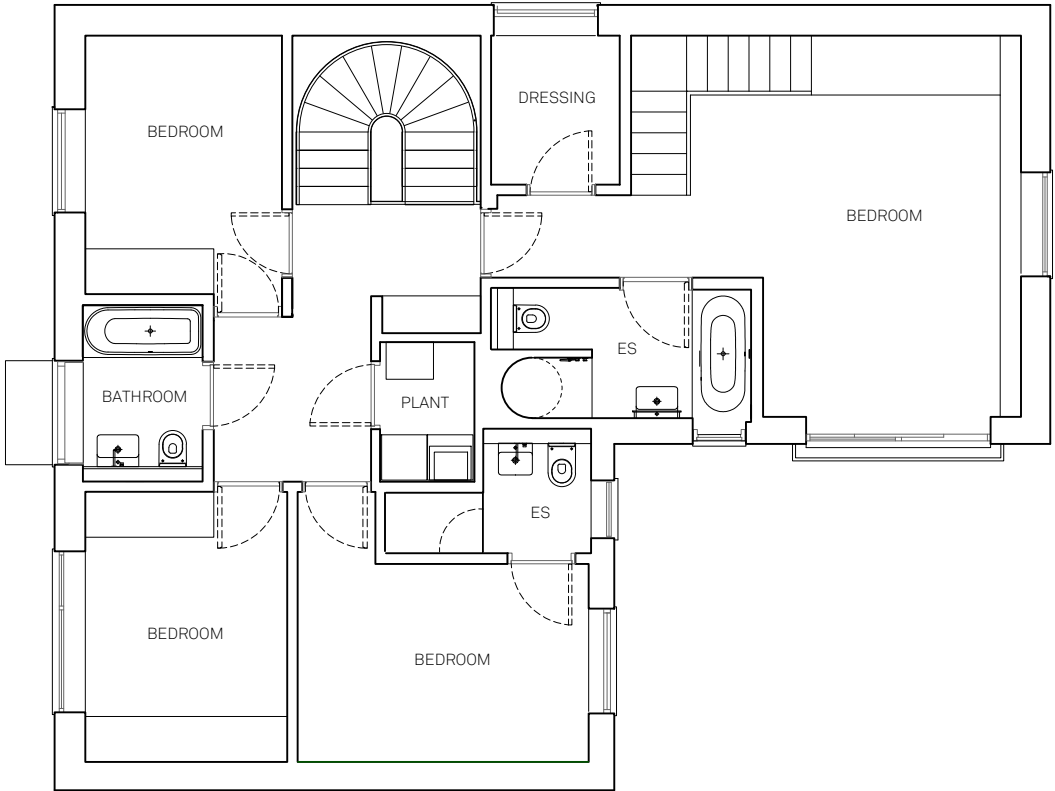
PLANNING KEY

- 01 WHITE PAINTED BRICK AND COPING
- 02 WHITE PAINTED RENDER
- 03 WHITE PAINTED METAL FRAMED TRIPLE GLAZED METAL WINDOW
- 04 WHITE PAINTED METAL BALUSTRADE
- 05 SINGLE PLY MEMBRANE ROOF COVERING
- 06 TRIPLE GLAZED ROOFLIGHT
- 07 WHITE PAINTED TIMBER BOARDING

NB. ALL MATERIALS TO MATCH EXISTING



EXISTING



PROPOSED

-	06/07/22	Planning
REV	DATE	DESCRIPTION



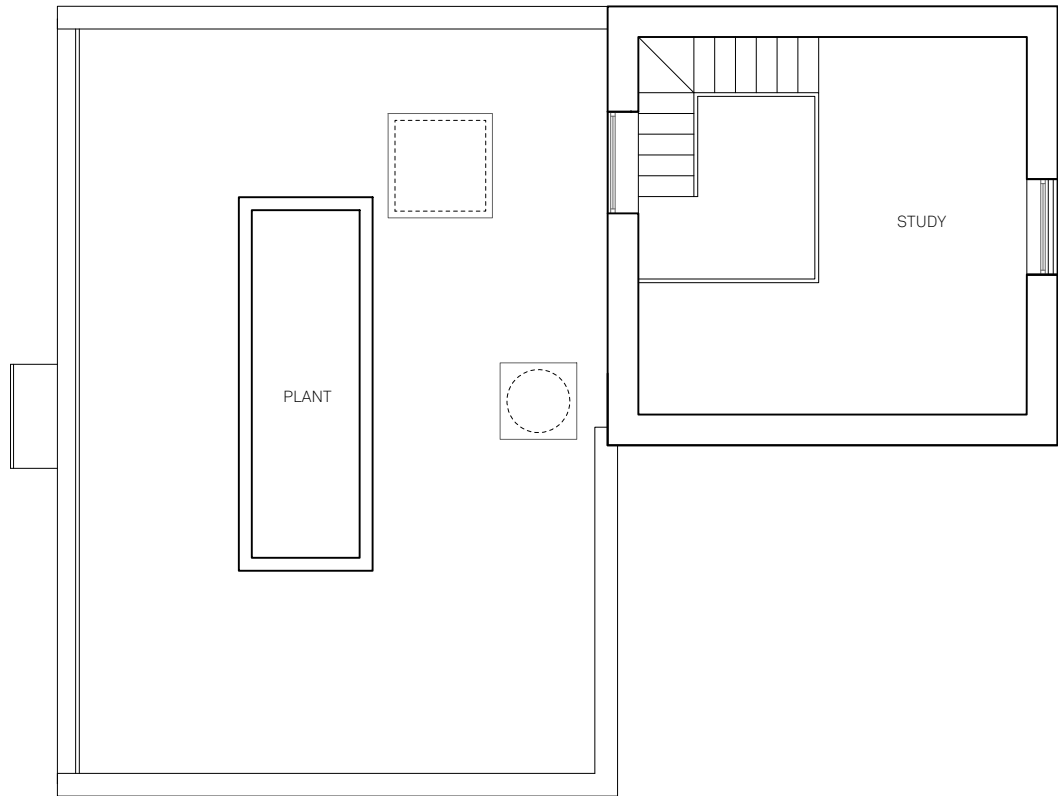
Do not scale for construction. Use figured dimensions only. All discrepancies to be verified with architect prior to ordering or construction/execution. Confirm all setting out with architect prior to construction. Drawing to be read in conjunction with all other documents. Copyright Christian Brailey Architects.

christian brailey architects
53 Dukes Avenue
London N10 2PY
07837 844 560
christianbrailey.com

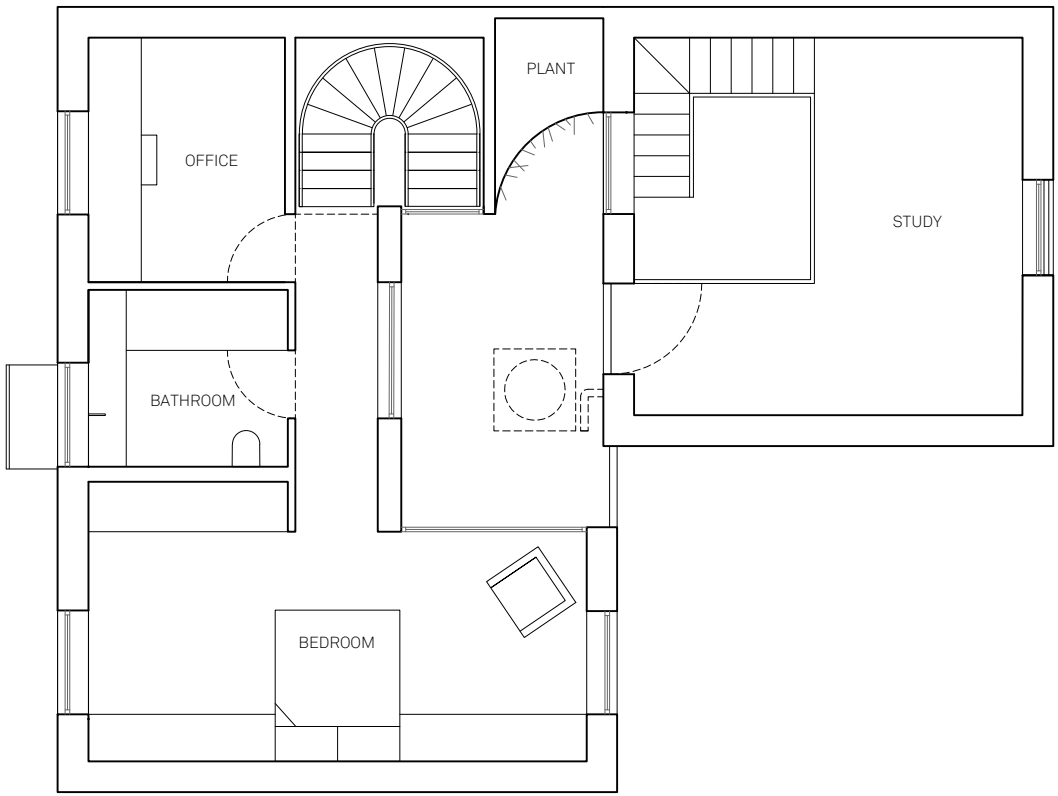
PLANNING KEY

- 01 WHITE PAINTED BRICK AND COPING
- 02 WHITE PAINTED RENDER
- 03 WHITE PAINTED METAL FRAMED TRIPLE GLAZED METAL WINDOW
- 04 WHITE PAINTED METAL BALUSTRADE
- 05 SINGLE PLY MEMBRANE ROOF COVERING
- 06 TRIPLE GLAZED ROOFLIGHT
- 07 WHITE PAINTED TIMBER BOARDING

NB. ALL MATERIALS TO MATCH EXISTING



EXISTING



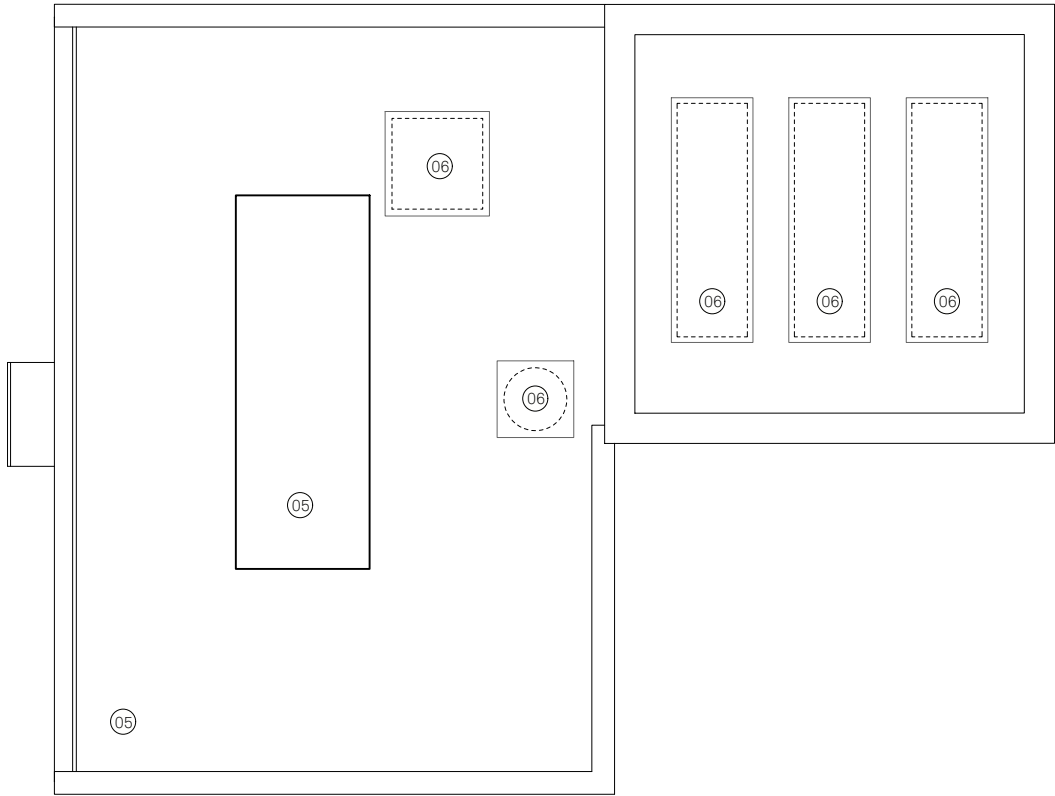
PROPOSED

-	06/07/22	Planning
REV	DATE	DESCRIPTION

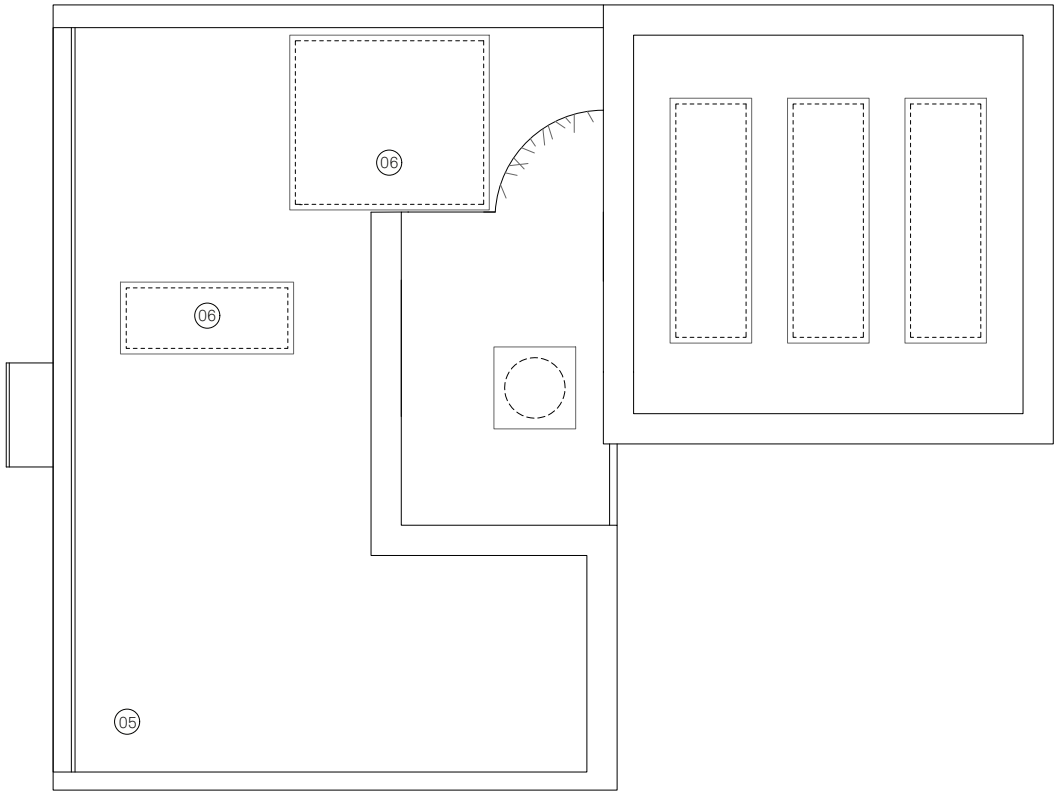
PLANNING KEY

- 01 WHITE PAINTED BRICK AND COPING
- 02 WHITE PAINTED RENDER
- 03 WHITE PAINTED METAL FRAMED TRIPLE GLAZED METAL WINDOW
- 04 WHITE PAINTED METAL BALUSTRADE
- 05 SINGLE PLY MEMBRANE ROOF COVERING
- 06 TRIPLE GLAZED ROOFLIGHT
- 07 WHITE PAINTED TIMBER BOARDING

NB. ALL MATERIALS TO MATCH EXISTING



EXISTING

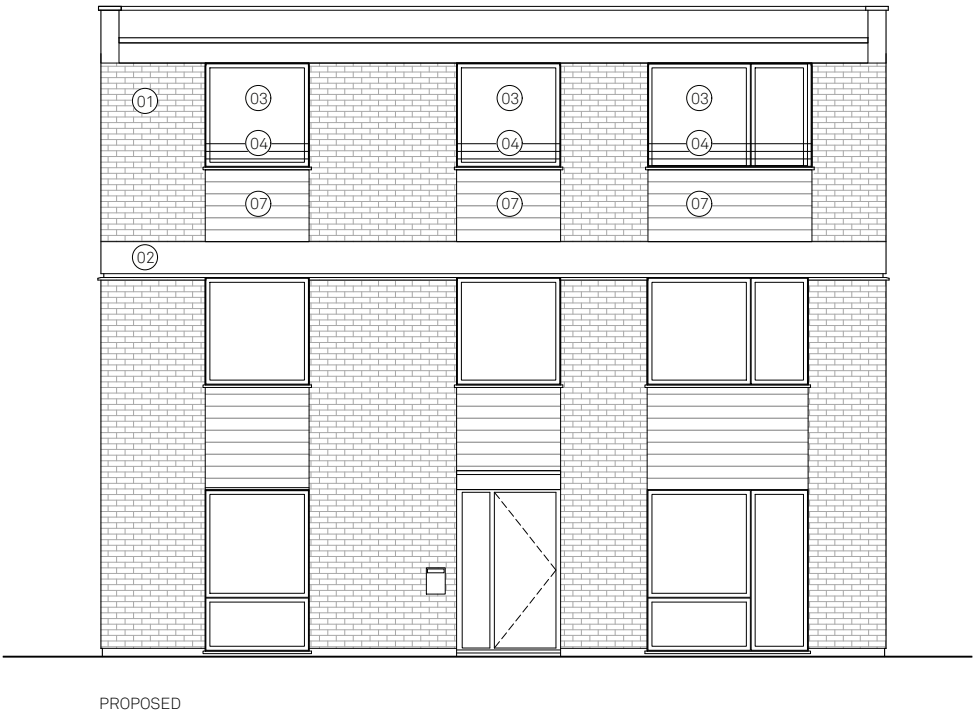


PROPOSED

PLANNING KEY

- 01 WHITE PAINTED BRICK AND COPING
- 02 WHITE PAINTED RENDER
- 03 WHITE PAINTED METAL FRAMED TRIPLE GLAZED METAL WINDOW
- 04 WHITE PAINTED METAL BALUSTRADE
- 05 SINGLE PLY MEMBRANE ROOF COVERING
- 06 TRIPLE GLAZED ROOFLIGHT
- 07 WHITE PAINTED TIMBER BOARDING

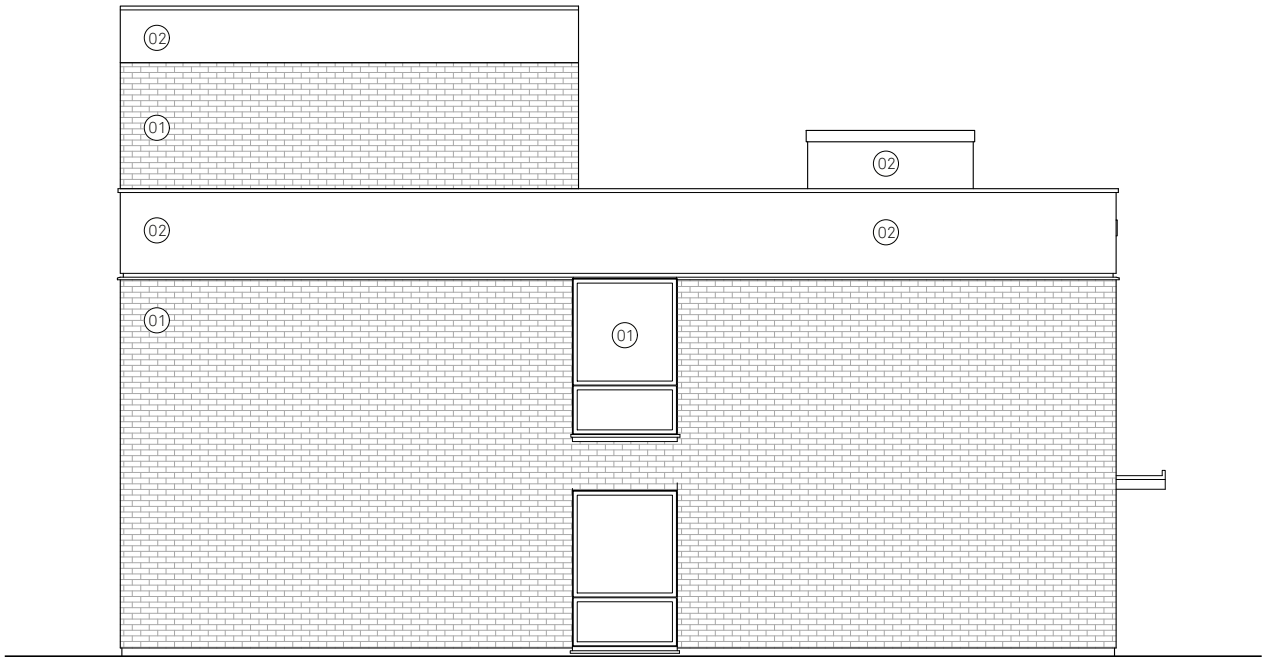
NB. ALL MATERIALS TO MATCH EXISTING



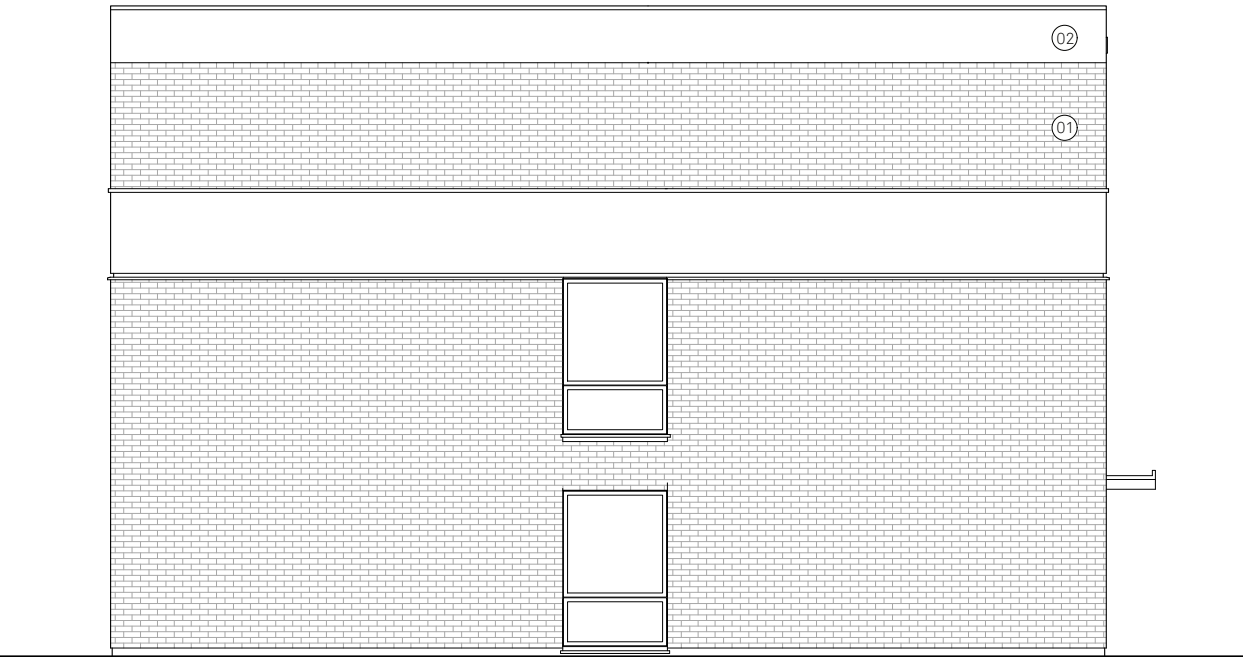
PLANNING KEY

- 01 WHITE PAINTED BRICK AND COPING
- 02 WHITE PAINTED RENDER
- 03 WHITE PAINTED METAL FRAMED TRIPLE GLAZED METAL WINDOW
- 04 WHITE PAINTED METAL BALUSTRADE
- 05 SINGLE PLY MEMBRANE ROOF COVERING
- 06 TRIPLE GLAZED ROOFLIGHT
- 07 WHITE PAINTED TIMBER BOARDING

NB. ALL MATERIALS TO MATCH EXISTING



EXISTING

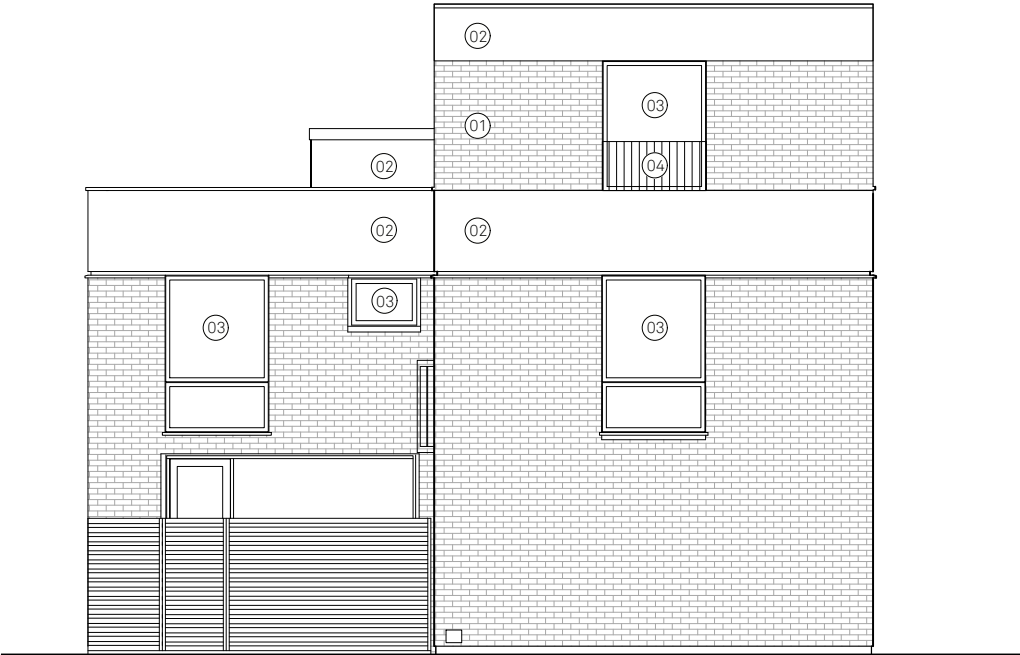


PROPOSED

PLANNING KEY

- 01 WHITE PAINTED BRICK AND COPING
- 02 WHITE PAINTED RENDER
- 03 WHITE PAINTED METAL FRAMED TRIPLE GLAZED METAL WINDOW
- 04 WHITE PAINTED METAL BALUSTRADE
- 05 SINGLE PLY MEMBRANE ROOF COVERING
- 06 TRIPLE GLAZED ROOFLIGHT
- 07 WHITE PAINTED TIMBER BOARDING

NB. ALL MATERIALS TO MATCH EXISTING



EXISTING

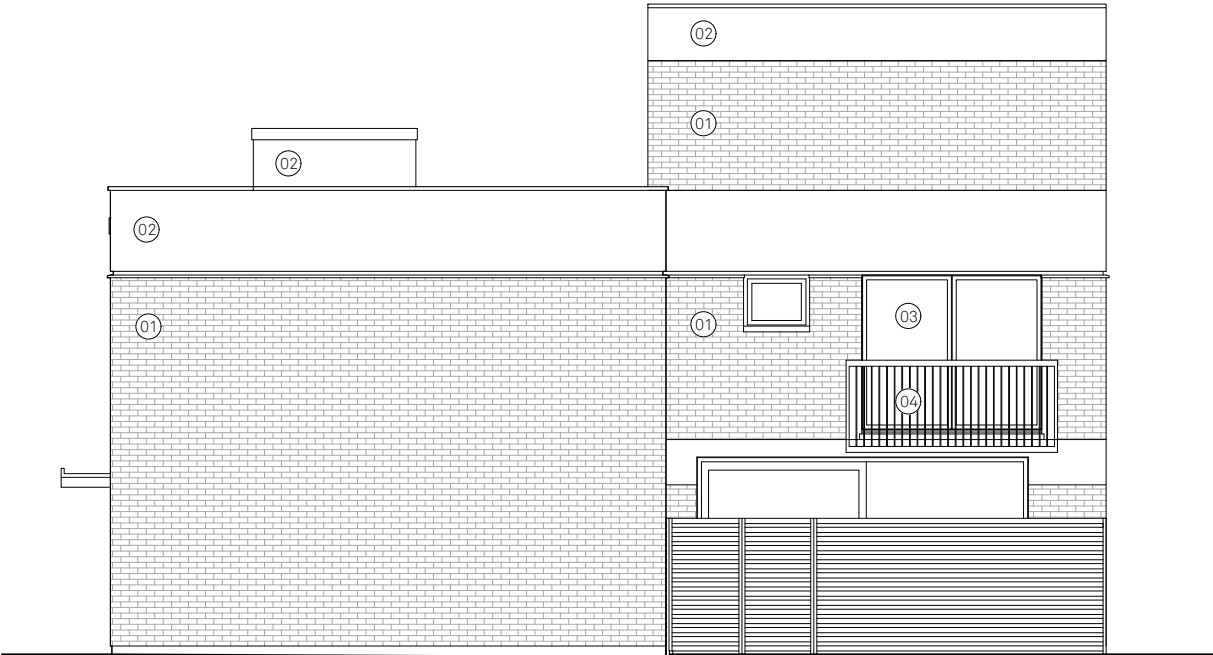


PROPOSED

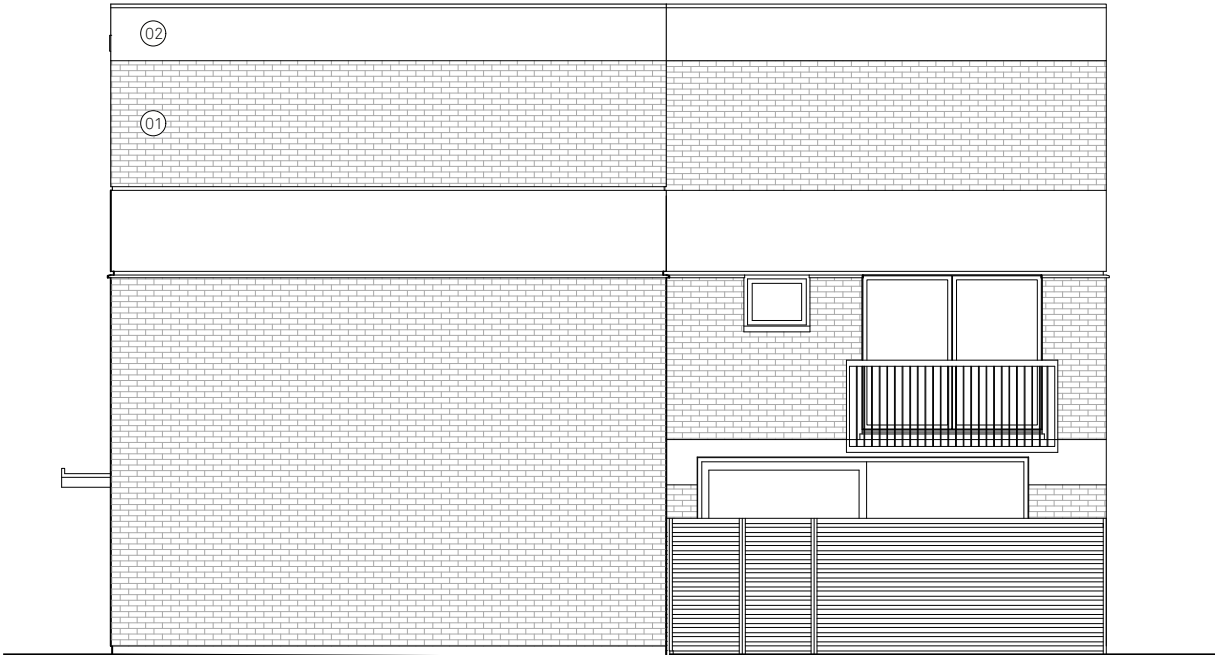
PLANNING KEY

- 01 WHITE PAINTED BRICK AND COPING
- 02 WHITE PAINTED RENDER
- 03 WHITE PAINTED METAL FRAMED TRIPLE GLAZED METAL WINDOW
- 04 WHITE PAINTED METAL BALUSTRADE
- 05 SINGLE PLY MEMBRANE ROOF COVERING
- 06 TRIPLE GLAZED ROOFLIGHT
- 07 WHITE PAINTED TIMBER BOARDING

NB. ALL MATERIALS TO MATCH EXISTING



EXISTING

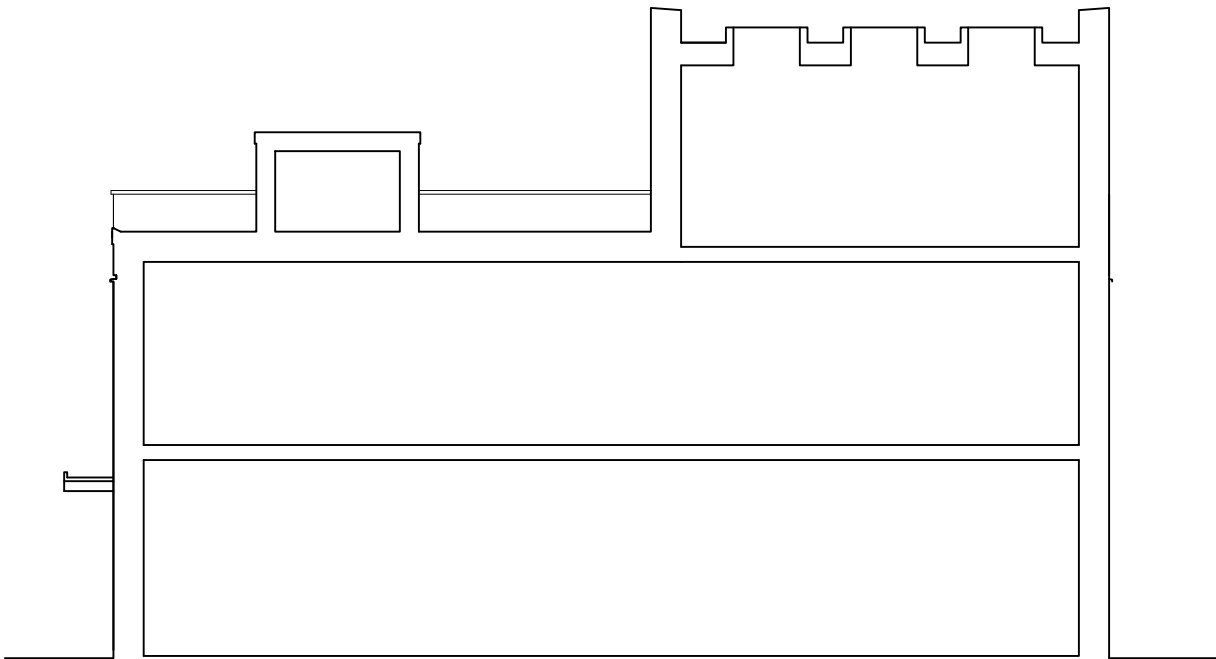


PROPOSED

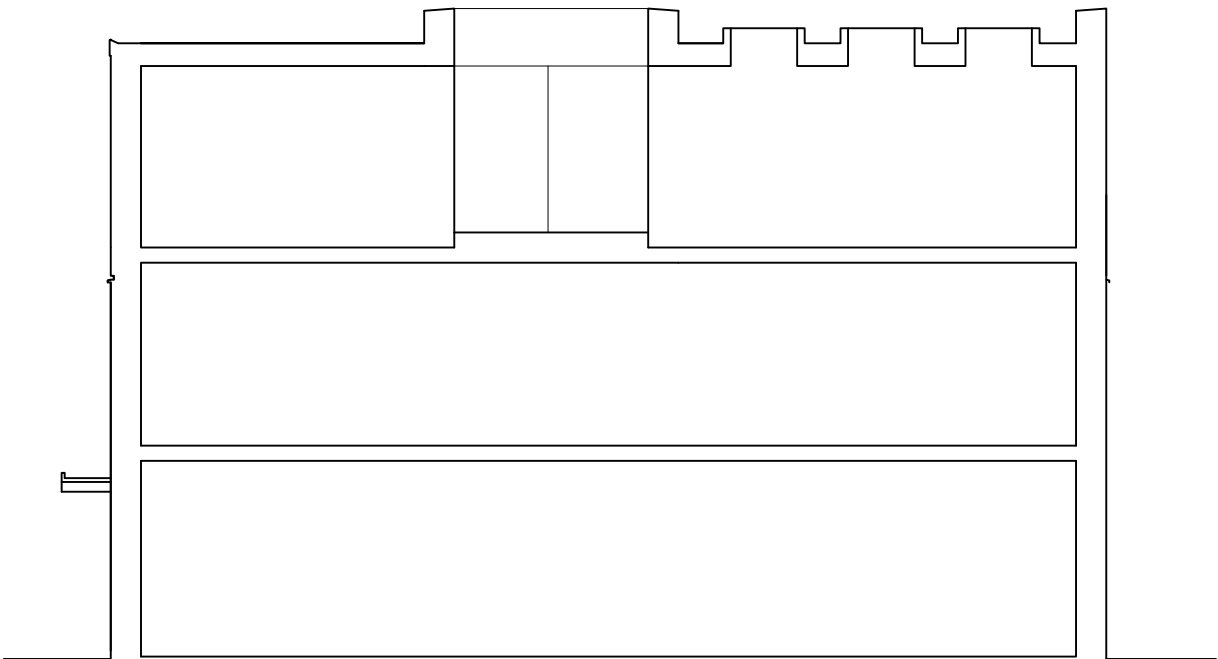
PLANNING KEY

- 01 WHITE PAINTED BRICK AND COPING
- 02 WHITE PAINTED RENDER
- 03 WHITE PAINTED METAL FRAMED TRIPLE GLAZED METAL WINDOW
- 04 WHITE PAINTED METAL BALUSTRADE
- 05 SINGLE PLY MEMBRANE ROOF COVERING
- 06 TRIPLE GLAZED ROOFLIGHT
- 07 WHITE PAINTED TIMBER BOARDING

NB. ALL MATERIALS TO MATCH EXISTING



EXISTING



PROPOSED