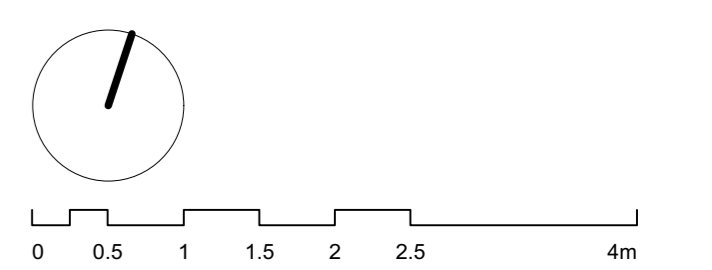
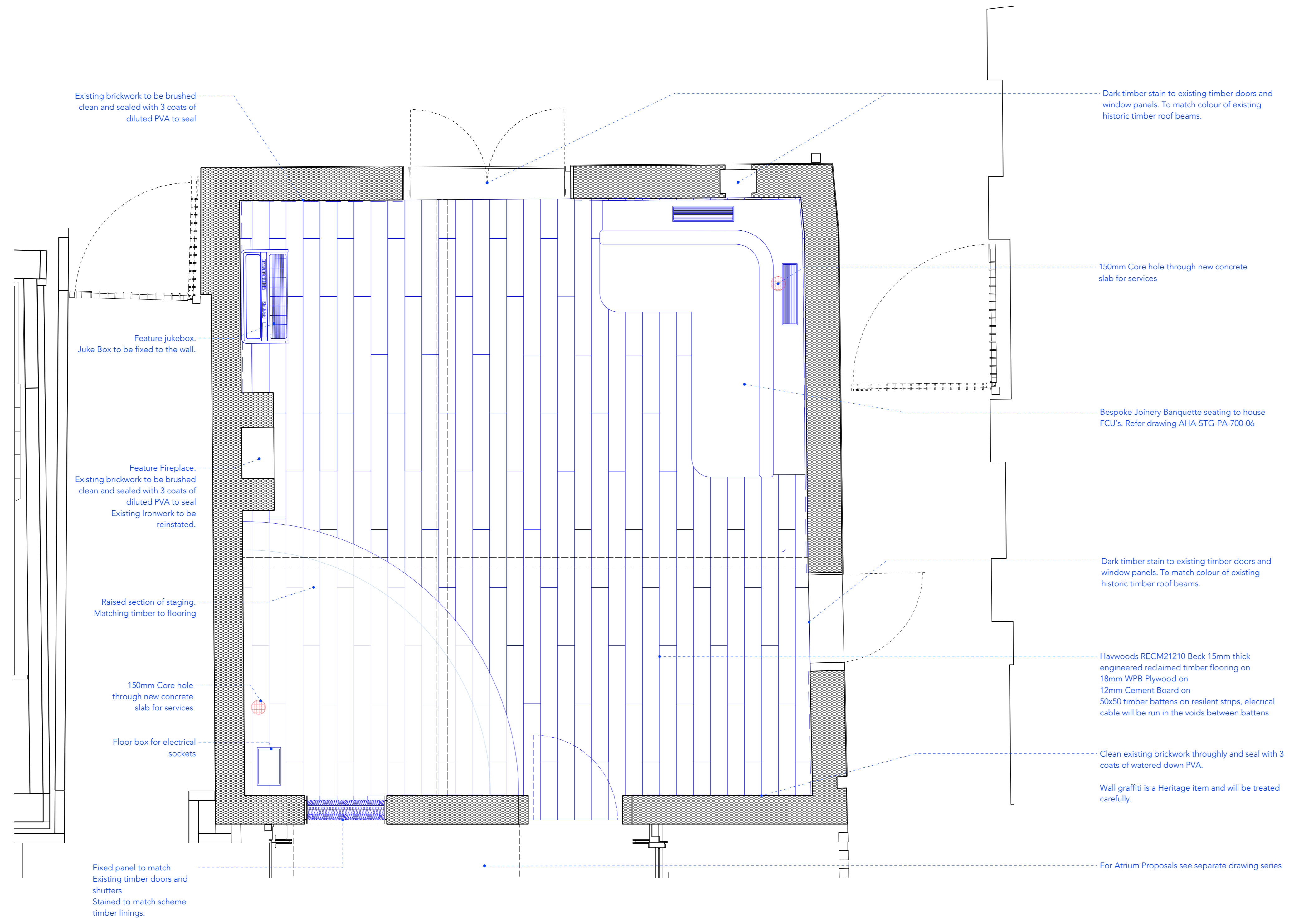


revision / date / amendments
Rev A: 15/06/22 : Cabinetry replaced with seating / Stage enlarged Fireplace note added

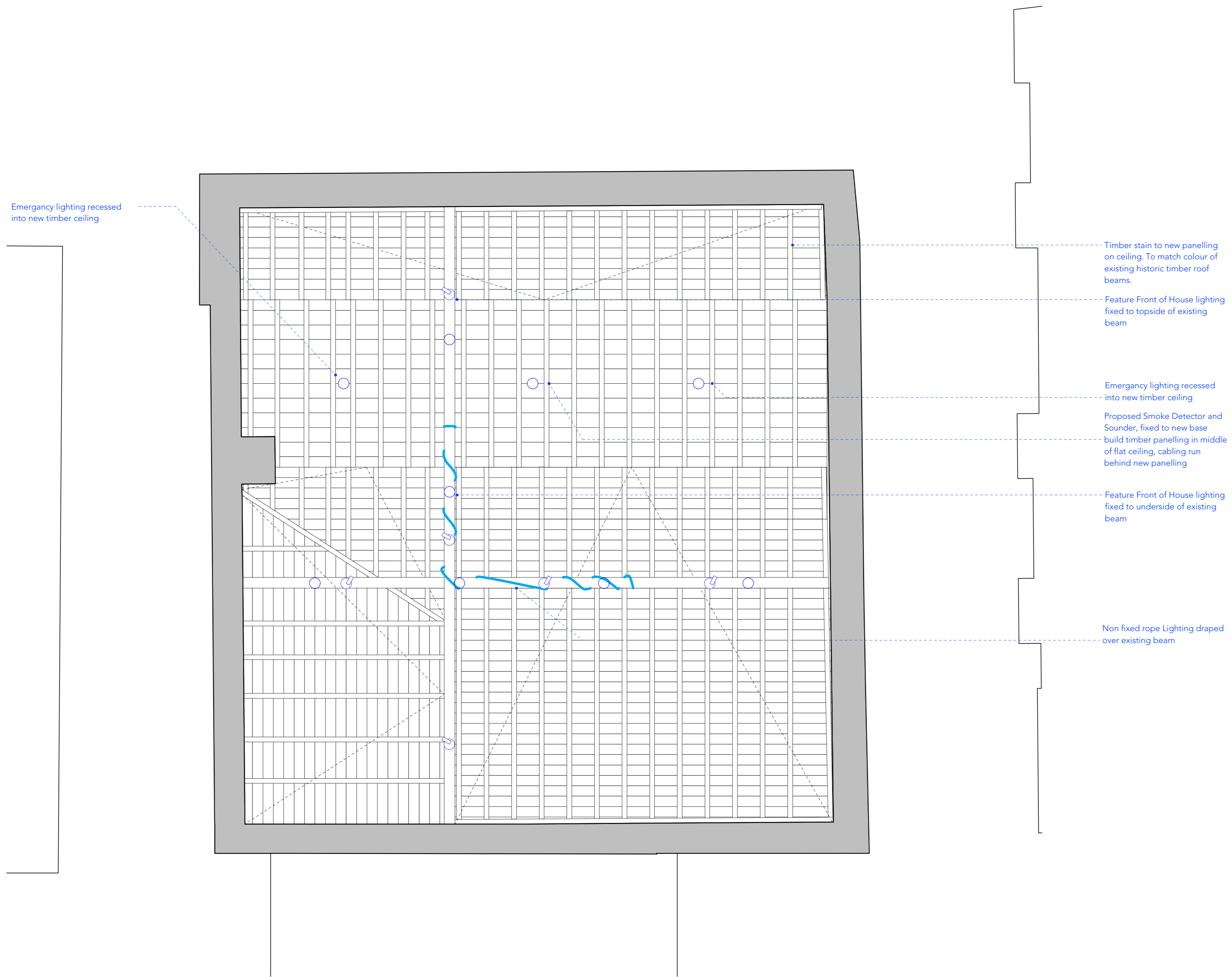


01 Forge Floor Plan
Scale: 1:25

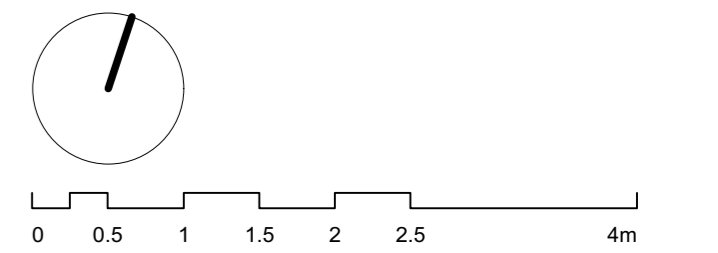
FOR PLANNING
Archer Humphryes Architects
 Basement
 Central House
 142 Central Street
 London, United Kingdom
 EC1V 8AR
 T : +44 (0) 20 7251 8555

project title		ST. GILES OUTERNET	
drawing title	scale	date	
Proposed 12Bar Forge Plan	1:25 @A1	08.04.22	
drawing number	drawn	checked	
AHA-STG- PA -700-1	KK / PB	DA / HJ	
	revision		
	A		

revision / date / amendments



01 Forge RCP
Scale: 1:25

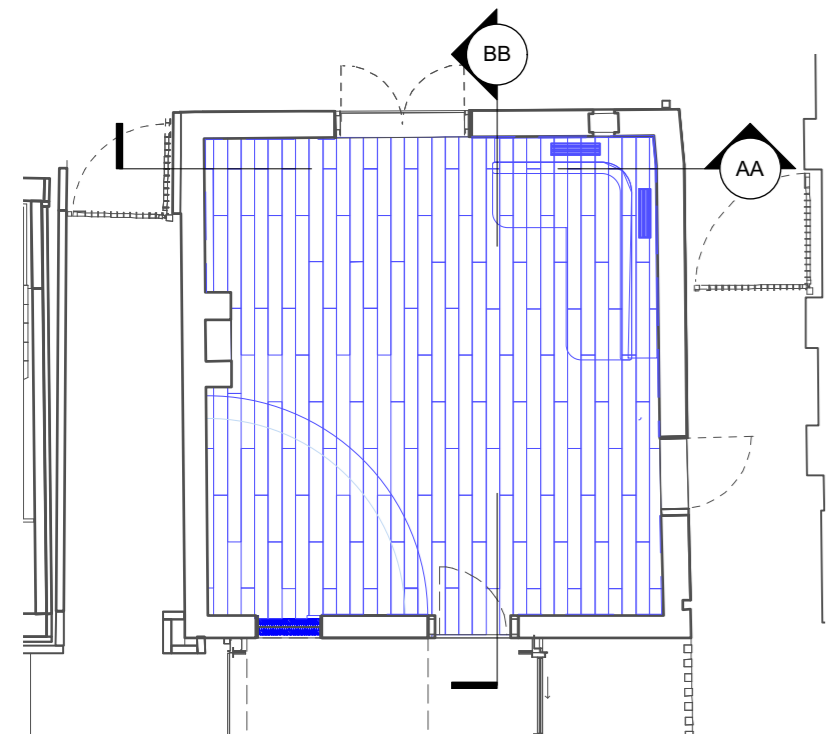


FOR PLANNING

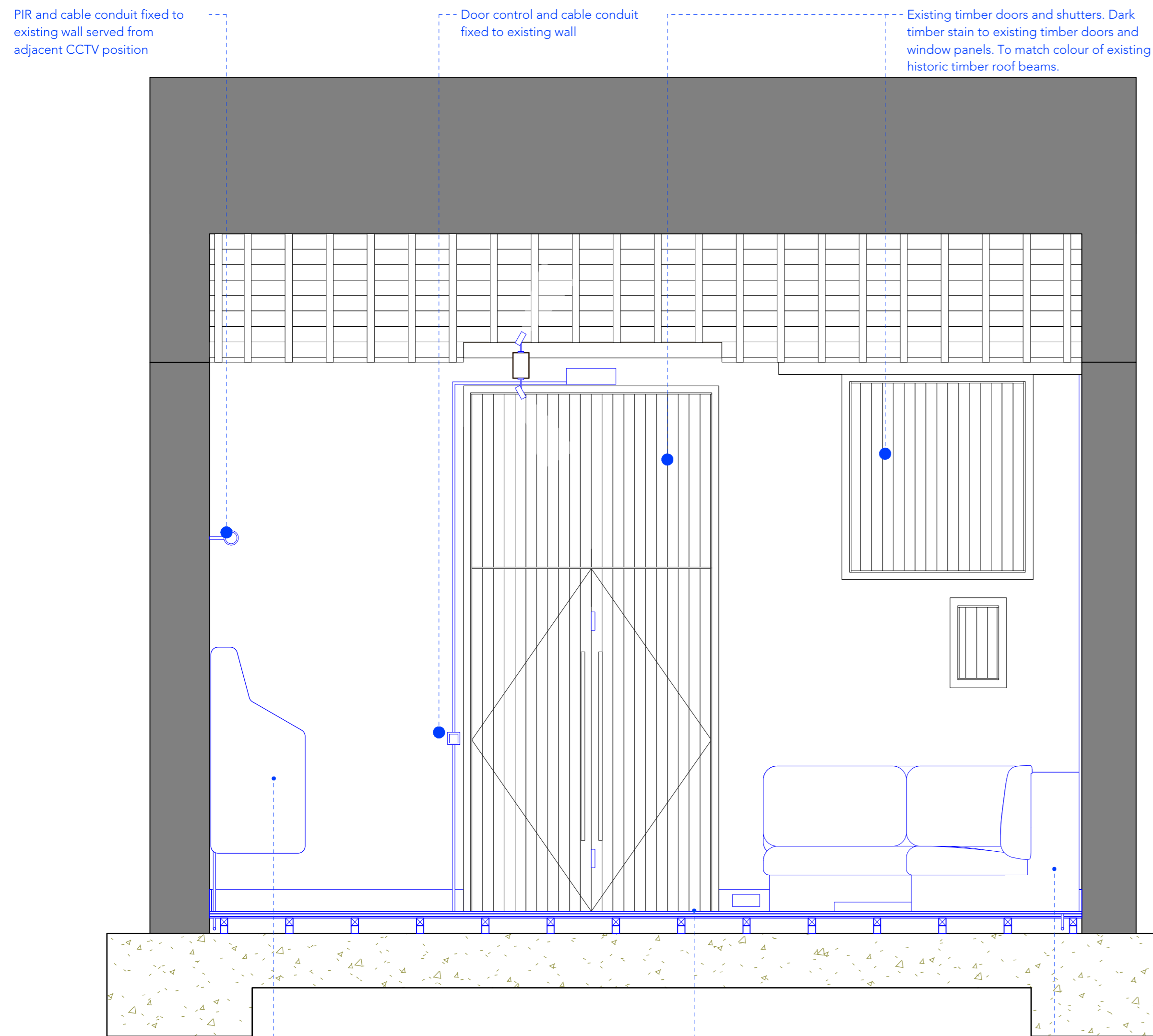
Archer Humphryes Architects

Basement
Central House
142 Central Street
London, United Kingdom
EC1V 8AR
T : +44 (0) 20 7251 8555

project title			
ST. GILES OUTERNET			
drawing title	scale	date	
Proposed 12Bar Forge RCP	1:25 @A1	08.04.22	
drawing number	drawn	checked	revision
AHA-STG- PA -700-2	KK / PB	DA / HJ	-



1 Forge Floor Plan - Key Plan
Scale: 1:100

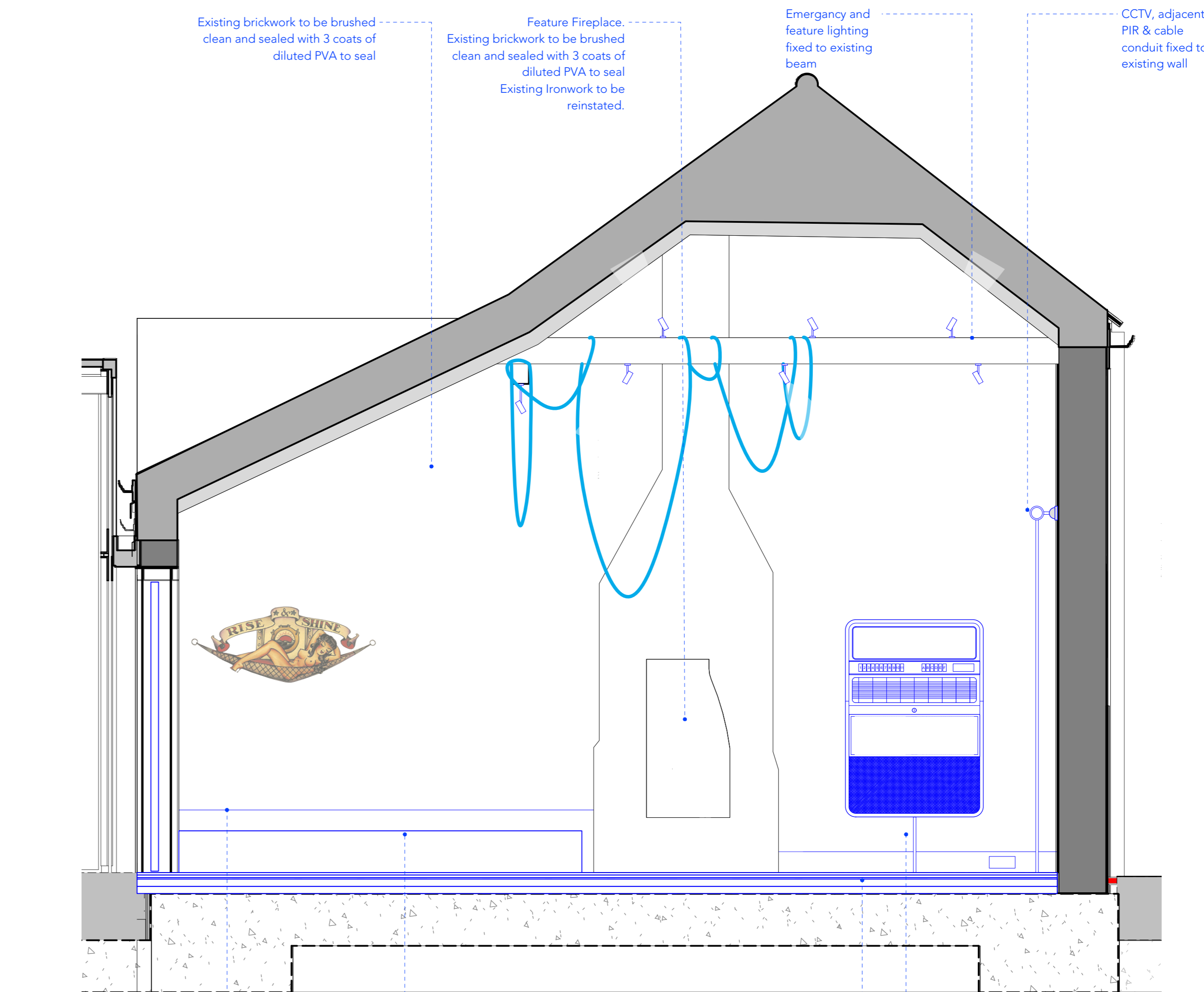


02 Section AA
Scale: 1:25

Wall Fixed Juke Box.

Hawoods RECM21210 Beck 15mm thick engineered reclaimed timber flooring on 18mm WPB Plywood on 12mm Cement Board on 50x50 timber battens on resilient strips, electrical cable will be run in the voids between battens

Bespoke Joinery Banquette seating to house FCU's. Dark timber stain to existing timber doors and window panels. To match colour of existing historic timber roof beams.



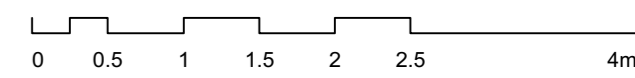
03 Section BB
Scale: 1:25

175mm MDF painted square profiled skirting

Raised section of staging. To match timber floor.

Hawoods RECM21210 Beck 15mm thick engineered reclaimed timber flooring on 18mm WPB Plywood on 12mm Cement Board on 50x50 timber battens on resilient strips, electrical cable will be run in the voids between battens

Wall mounted Juke Box.

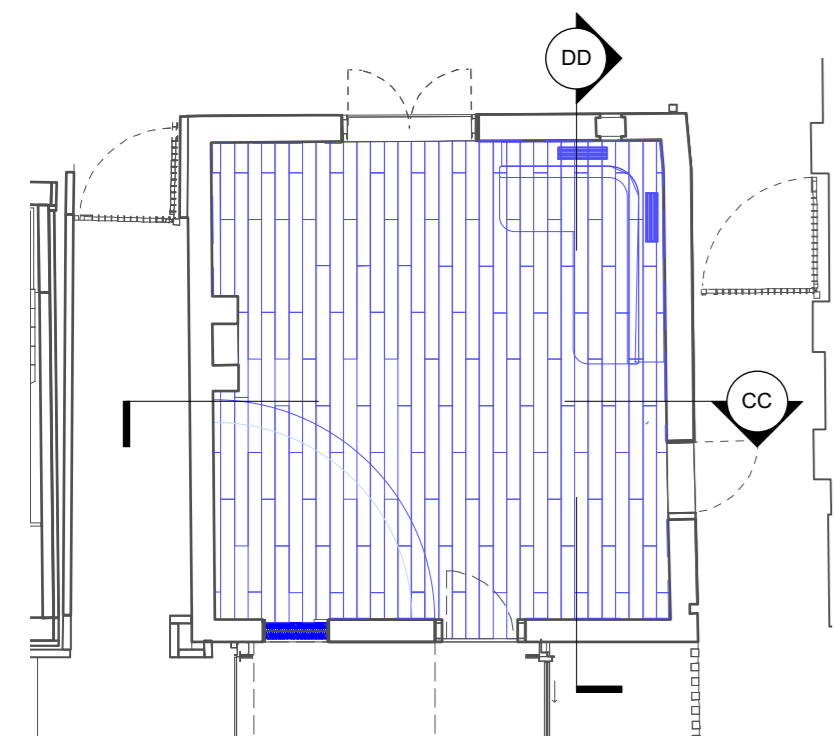


FOR PLANNING

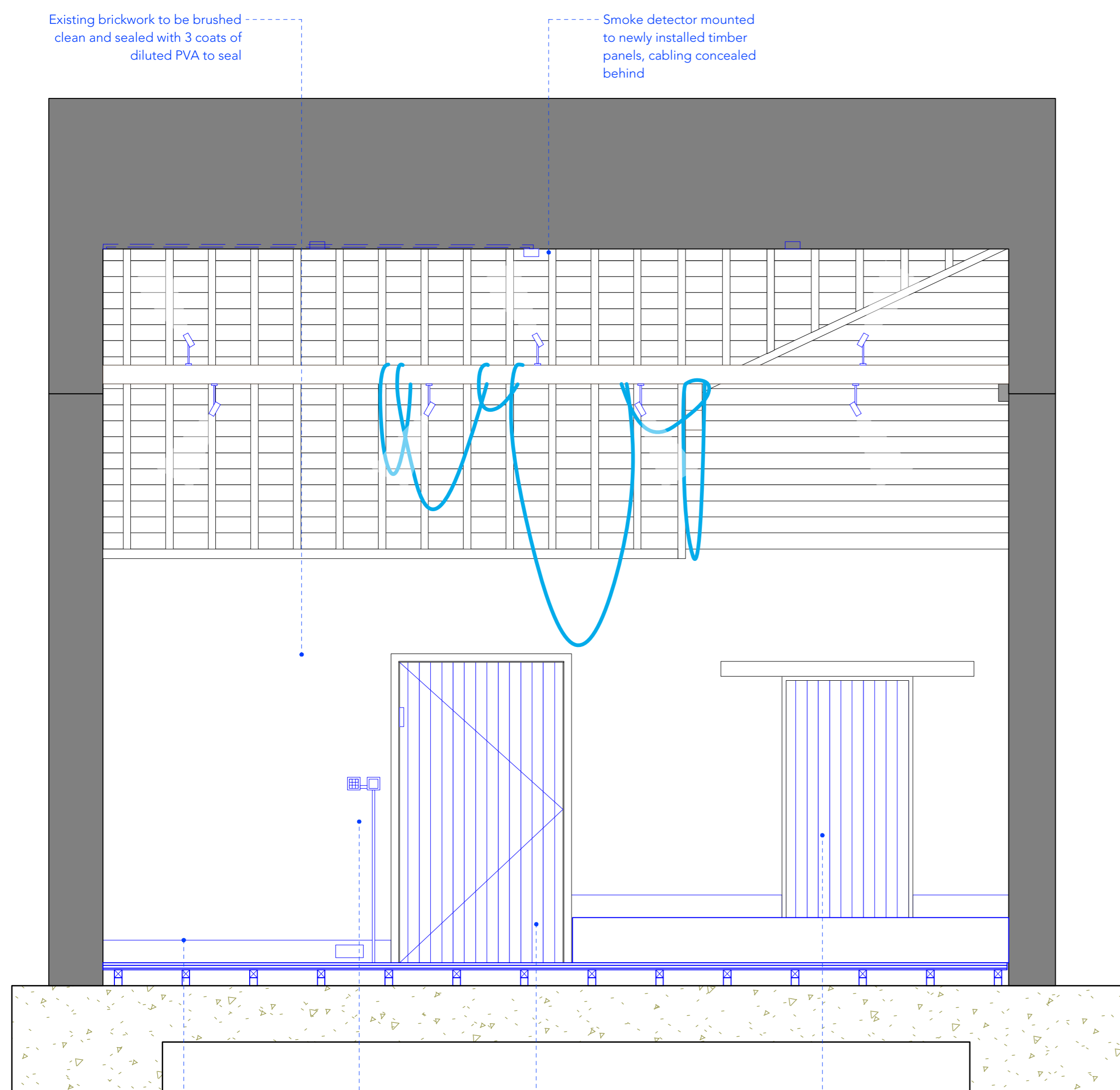
Archer Humphryes Architects

Basement
Central House
142 Central Street
London, United Kingdom
EC1V 8AR
T : +44 (0) 20 7251 8555

project title			
ST. GILES OUTERNET			
drawing title	scale	date	
Proposed 12Bar Forge Section AA & BB	1:25 @A1	08.04.22	
drawing number	drawn	checked	
AHA-STG- PA -700-4	KK / PB	DA / HJ	
	revision		
	A		

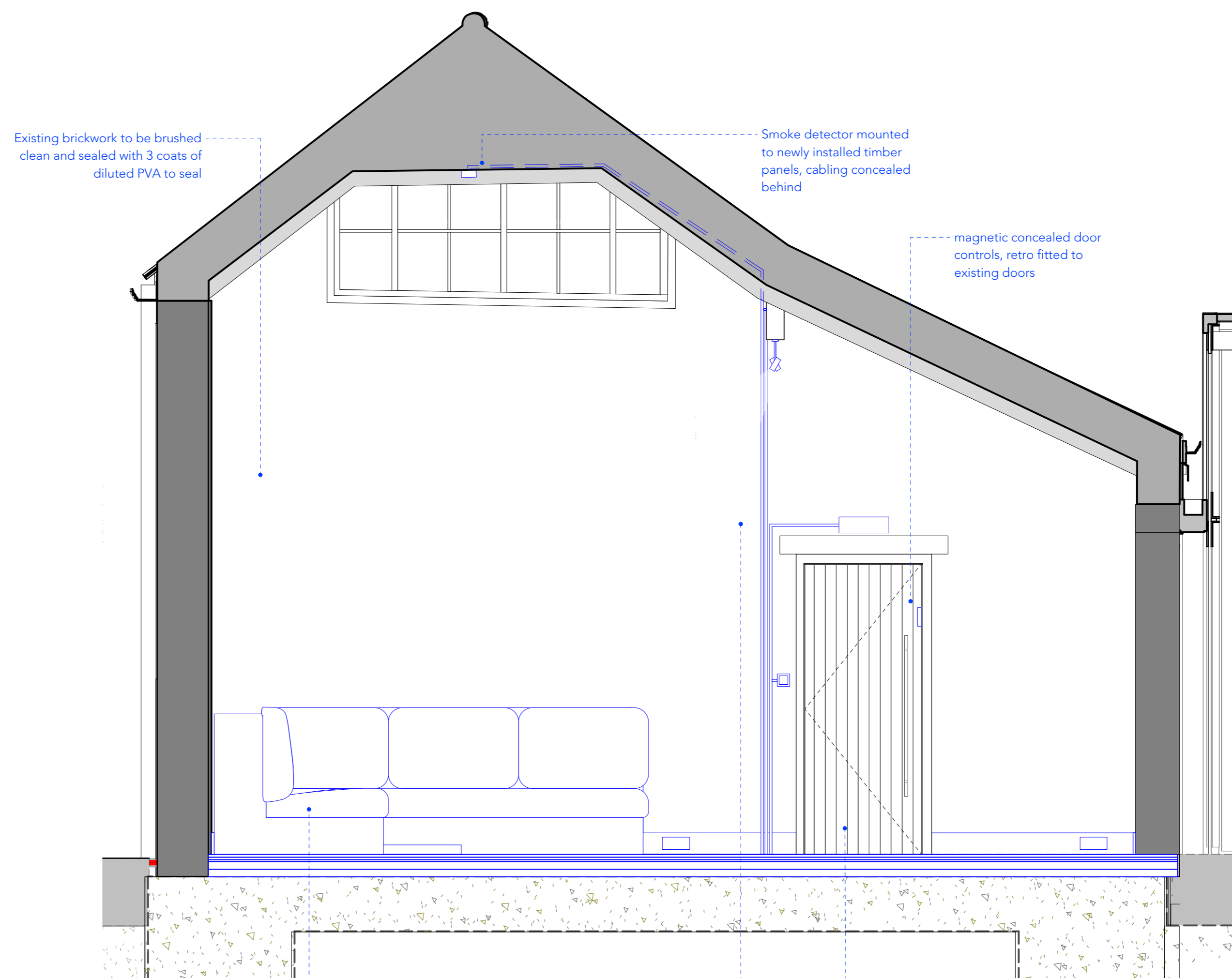


01 Forge Floor Plan - Key Plan
 Scale: 1:100



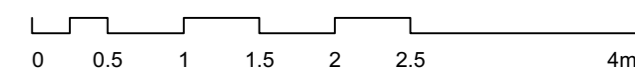
02 Section CC
 Scale: 1:25

- Existing brickwork to be brushed clean and sealed with 3 coats of diluted PVA to seal
- Smoke detector mounted to newly installed timber panels, cabling concealed behind
- 175mm MDF painted square profiled skirting
- Door Control, alarm keypad & cable conduit fixed to wall
- Existing timber doors and shutters. Dark timber stain to existing timber doors and window panels. To match colour of existing historic timber roof beams.
- Fixed panel. Dark timber stain to existing timber doors and window panels. To match colour of existing historic timber roof beams.



03 Section DD
 Scale: 1:25

- Existing brickwork to be brushed clean and sealed with 3 coats of diluted PVA to seal
- Smoke detector mounted to newly installed timber panels, cabling concealed behind
- magnetic concealed door controls, retro fitted to existing doors
- Bespoke Joinery Banquette seating to house FCU's.
- Ceiling lighting, Smoke Detector, Escape signage and call point and cable conduit fixed to existing brick wall, partially concealed by proposed cabinetry.
- Existing timber doors and shutters. Dark timber stain to existing timber doors and window panels. To match colour of existing historic timber roof beams.

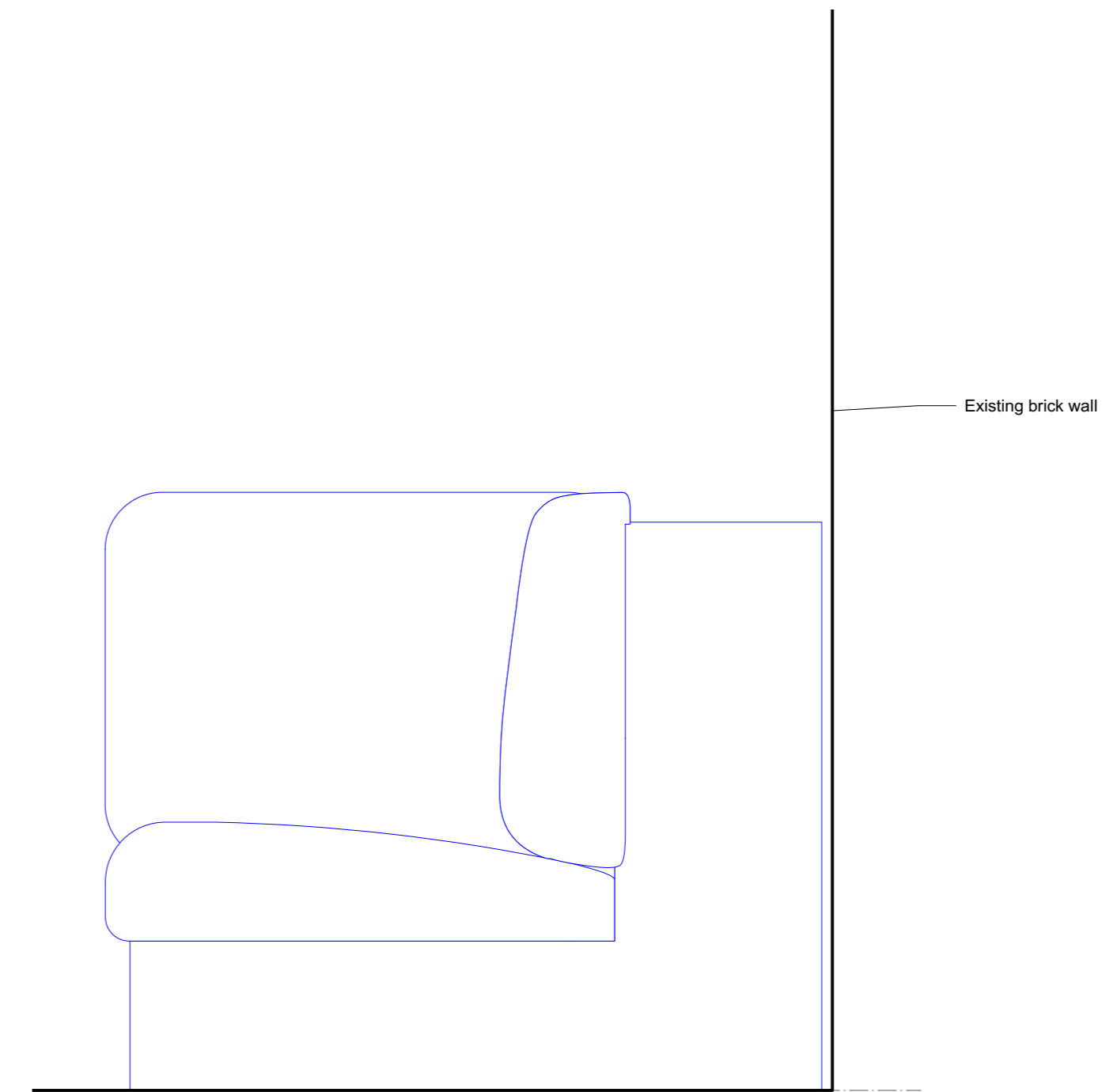


FOR PLANNING

Archer Humphryes Architects

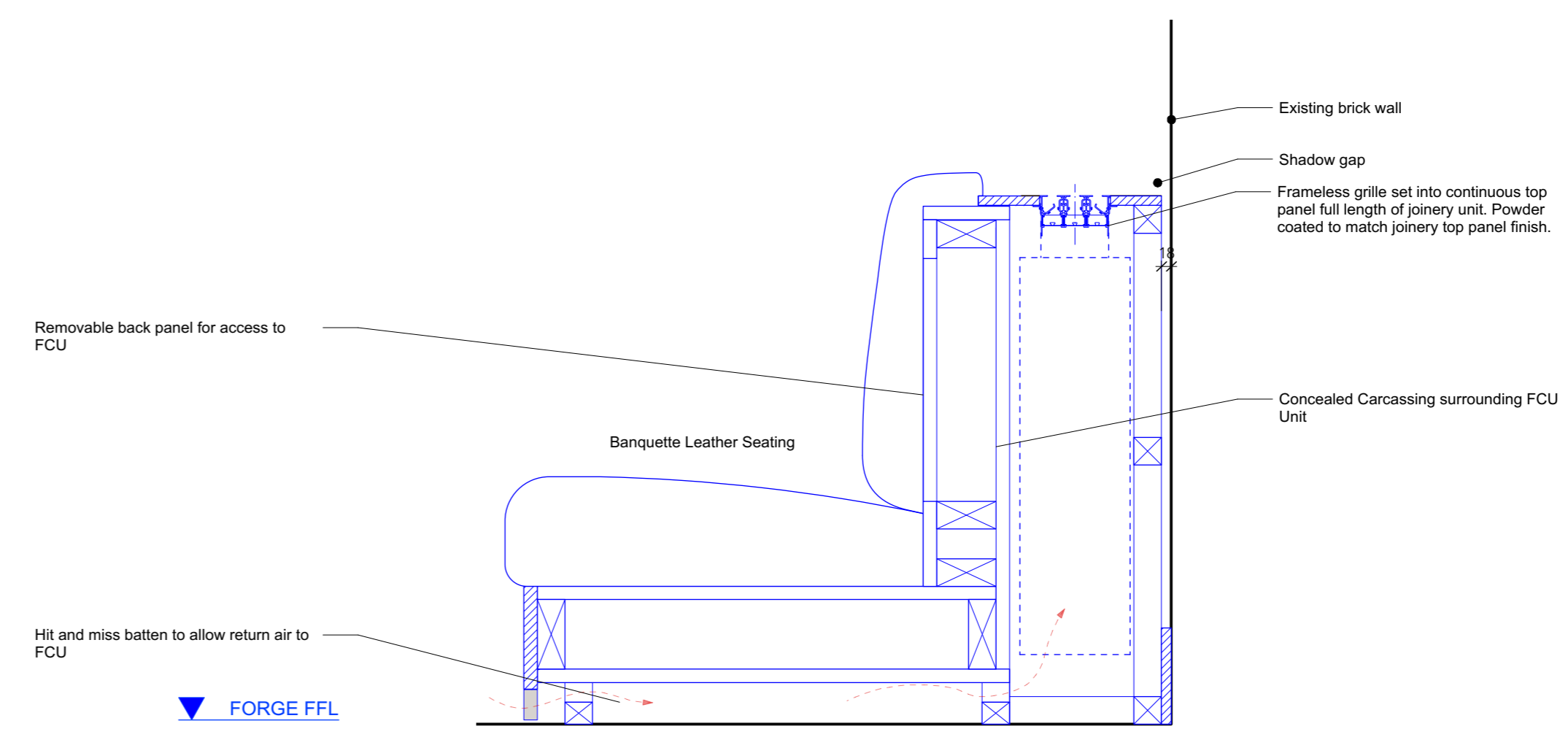
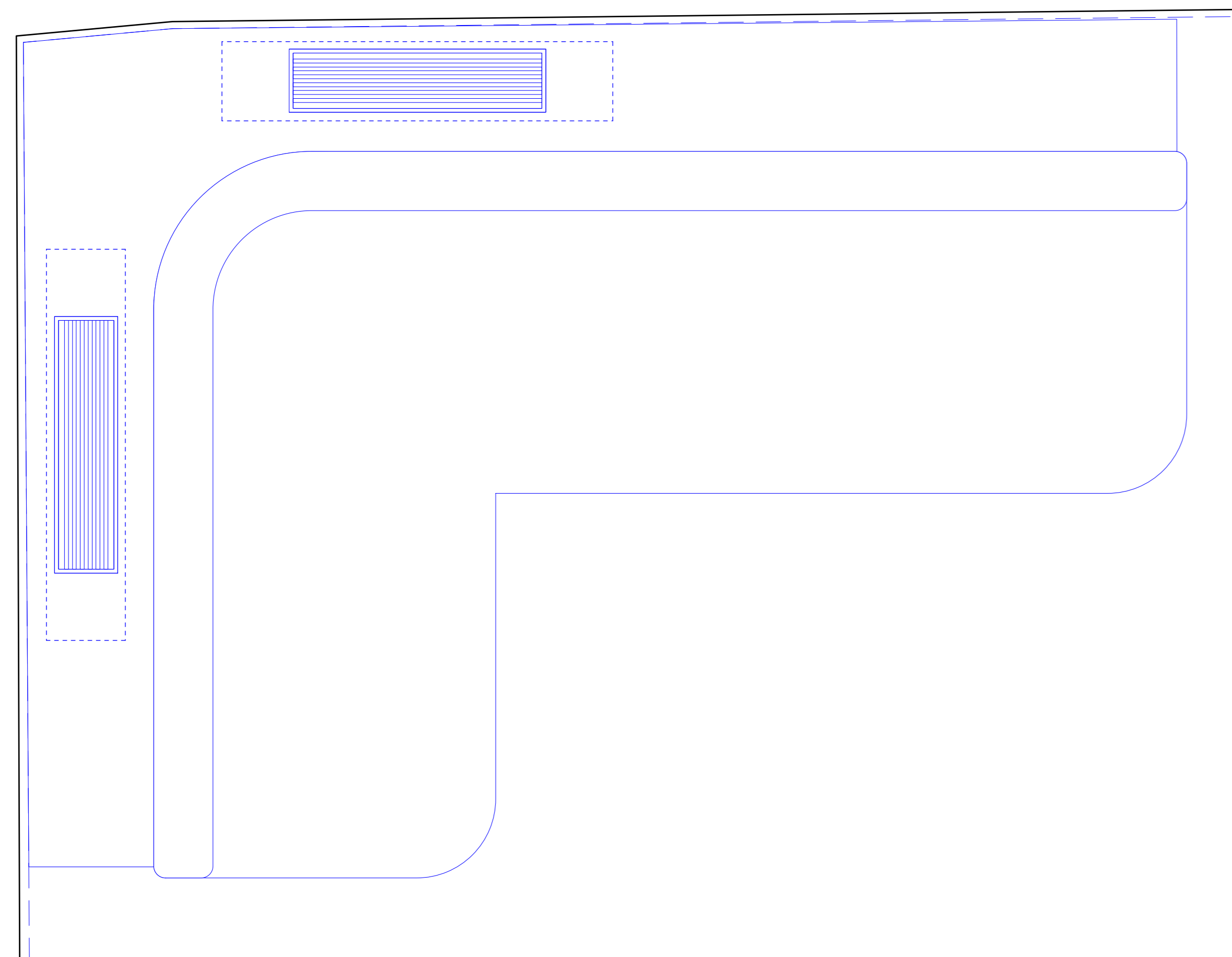
Basement
 Central House
 142 Central Street
 London, United Kingdom
 EC1V 8AR
 T : +44 (0) 20 7251 8555

project title			
ST. GILES OUTERNET			
drawing title	scale	date	
Proposed 12Bar Forge	1:25	08.04.22	
Section CC & DD	drawn	checked	
drawing number	AHA-STG- PA -700-5	revision	A

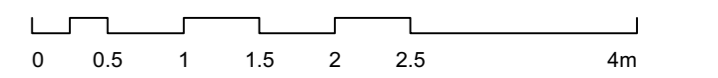


1 Forge Banquette Seating Unit - Front Elevation
 Scale: 1:10

3 Forge Banquette Unit - Right Elevation
 Scale: 1:10



4 Forge Banquette Unit - Section
 Scale: 1:10



FOR PLANNING

Archer Humphryes Architects

Basement
 Central House
 142 Central Street
 London, United Kingdom
 EC1V 8AR
 T : +44 (0) 20 7251 8555

project title		ST. GILES OUTERNET	
drawing title	scale	date	
Proposed 12Bar Forge FCU Banquette Seating Elevations	1:10 @A1	08.04.22	
drawing number	drawn	checked	
AHA-STG- PA -700-6	YKS	DA / HJ	
	revision		
	A		

2 Forge Banquette Unit - Side View
 Scale: 1:10