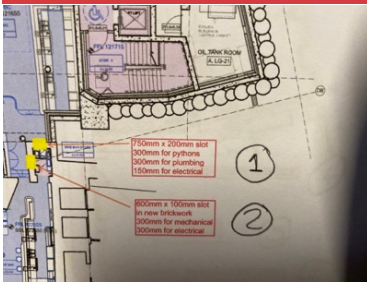


PROJECT 13/06/2022, 17:17

Monday, 13 June 2022

Prepared For Camden Conservation Office

27 Issues Identified



ITEM 1

Assigned To Lower Ground Floor

Size 750mm wide x200mm high slot utilises

300x200 for pythons

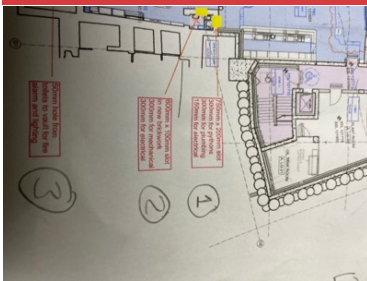
300x200 for plumbing

150x200 for electrical



ITEM 1

Assigned To Lower Ground Floor



ITEM 2

Assigned To Lower Ground Floor

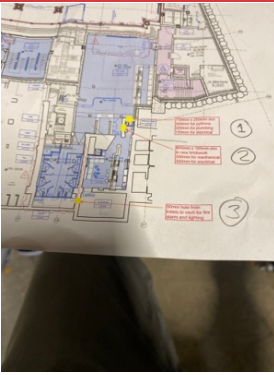
600 mm long slot in new brickwork

300 mm mechanical

300mm electrical

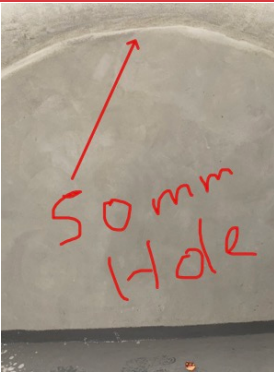


ITEM 2



ITEM 3

Assigned To Lower Ground Floor
50mm hole for alarm and lighting



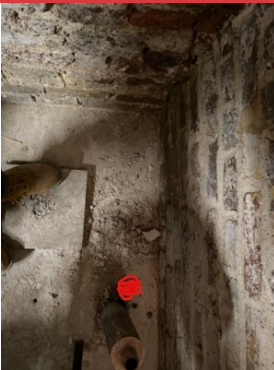
ITEM 3

Assigned To Lower Ground Floor Vault



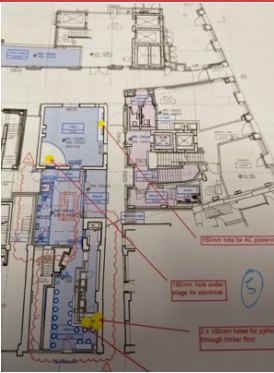
ITEM 4

Assigned To Ground Floor Forge
150 mm dia hole thro slab thro AC pipework



ITEM 4

Assigned To Ground Floor Forge



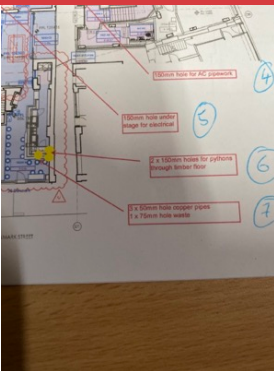
ITEM 5

Assigned To Ground Floor Forge

150mm hole under stage for electrical services



ITEM 5

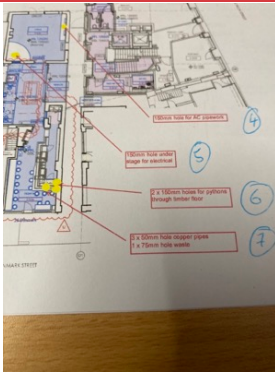


ITEM 6

Assigned To Ground Floor Front Bar

2x150mm holes for pythons through timber floor

ITEM 6

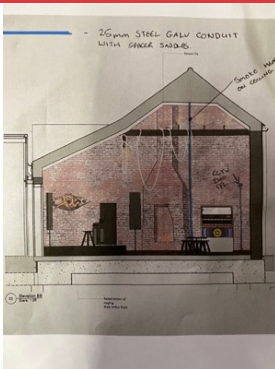


ITEM 7

Assigned To Ground Floor Front Bar
3x50mm holes for pipework copper
1x75mm waste for bar



ITEM 7



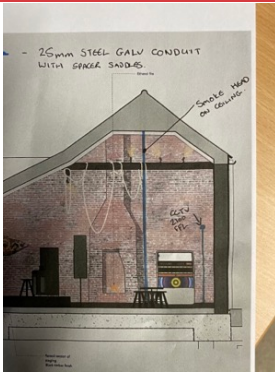
ITEM8

Assigned To Forge Bar
25mm galvanised tubing fixed to mortar joints only 2100 ffl for cctv



ITEM 8

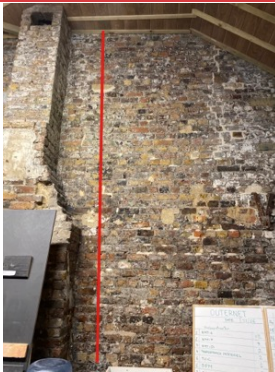
Assigned To Cctv To Finish Here
All fixings to be perpendicular or horizontal mortar joint
No fixing to be within the face



ITEM 9

Assigned To Forge Bar

25mm galvanised conduit with spacers saddles for smoke head to ceiling



ITEM 9

Assigned To Smoke Head Containment

25mm galvanised containment fixed between mortar joints only



ITEM 10

Assigned To Forge Bar

Fire alarm point 1200mm ffl



ITEM 10

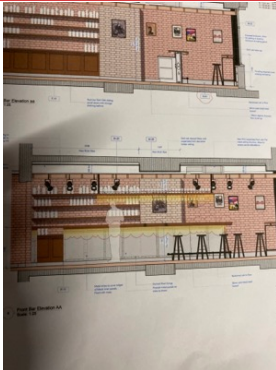
Assigned To Emergency Lighting And Light Fittings

3xlight fittings with emergency lighting



ITEM 10

Assigned To Emergency Light fittings
All spacer saddles fixed to mortar joints



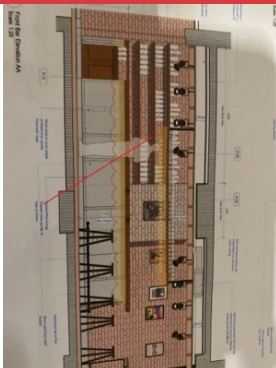
ITEM11

Assigned To Acoustic Ceiling
Acoustic hangers fixed to new timbers
Original floor joist left untouched



ITEM 11

Assigned To Acoustic Ceiling Hangers
Fixed to new timber as per arrow



ITEM12

Assigned To Front Bar Shelving
All shelf fixing to be within mortar joint only



ITEM12

Assigned To Front Bar Shelving

All fixings to be within mortar joints as per red lines



ITEM 13

Assigned To Atrium External/alley Way

Terracotta air brick to be installed for extract to pot wash