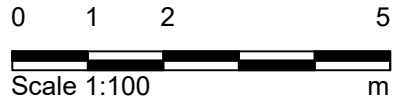
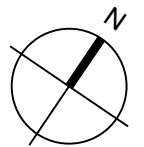
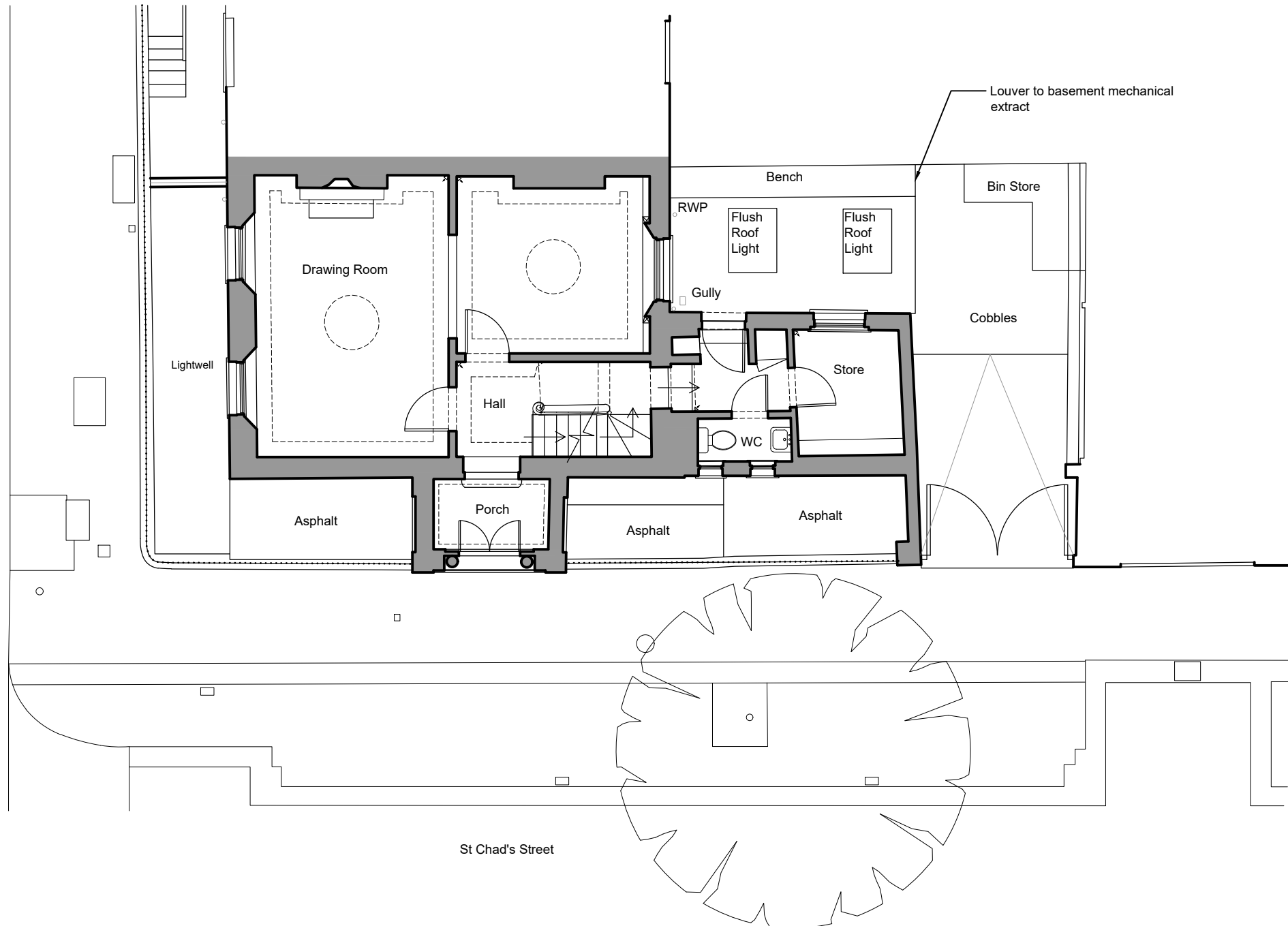


Crestfield Street



01 Ground Floor Plan
1001 1:100 @ A3

Purpose of Issue:
FOR_COMMENT

- Notes**
- Any dwg format drawing is to be read in conjunction with and at the scale of the accompanying pdf.
 - Where colours other than black or grey are used, the drawing must be plotted in colour.
 - For status 'C' (Construction) drawings all dimensions are to be checked on site by the contractor, scaling is for Local Authority purposes only.
 - Unless otherwise indicated, all dimensions are in millimeters.
 - All information on this drawing is to be read in conjunction with the relevant Donald Insall Associates specification and trade contractors' drawings and information by specialists.
 - In the event of any discrepancy, please contact us immediately.
 - This drawing may contain survey information by others and is to be used solely for the purposes for which it was issued.
 - These are uncontrolled documents issued for information purposes only. If you have any queries regarding the drawings, please contact DIA immediately.
 - Please note DIA cannot be held responsible for any errors arising from changes made to an uncontrolled dwg file.

Drawing Status

F	Feasibility
S	Sketch Design
P	Planning
B	Building Control
D	Design Development
M	Measurement
T	Tender
C	Construction
R	Record

Rev	Date	Dwn	Auth	Revision

Rev	Date	Dwn	Auth	Revision
1	31-01-20	-	TOB	Cost Estimate
0	24-10-19	EKN	TOB	Initial Issue

Donald Insall Associates
Chartered Architects and Historic Building Consultants

12 Devonshire Street
London W1G 7AB
(+44) 020 7245 9888
london@insall-architects.co.uk

1 Crestfield Street

Project	CS1.01	No	1001
Scale (A3)	1:100	Status	P
		Revision	1

Ground Floor Plan
Existing