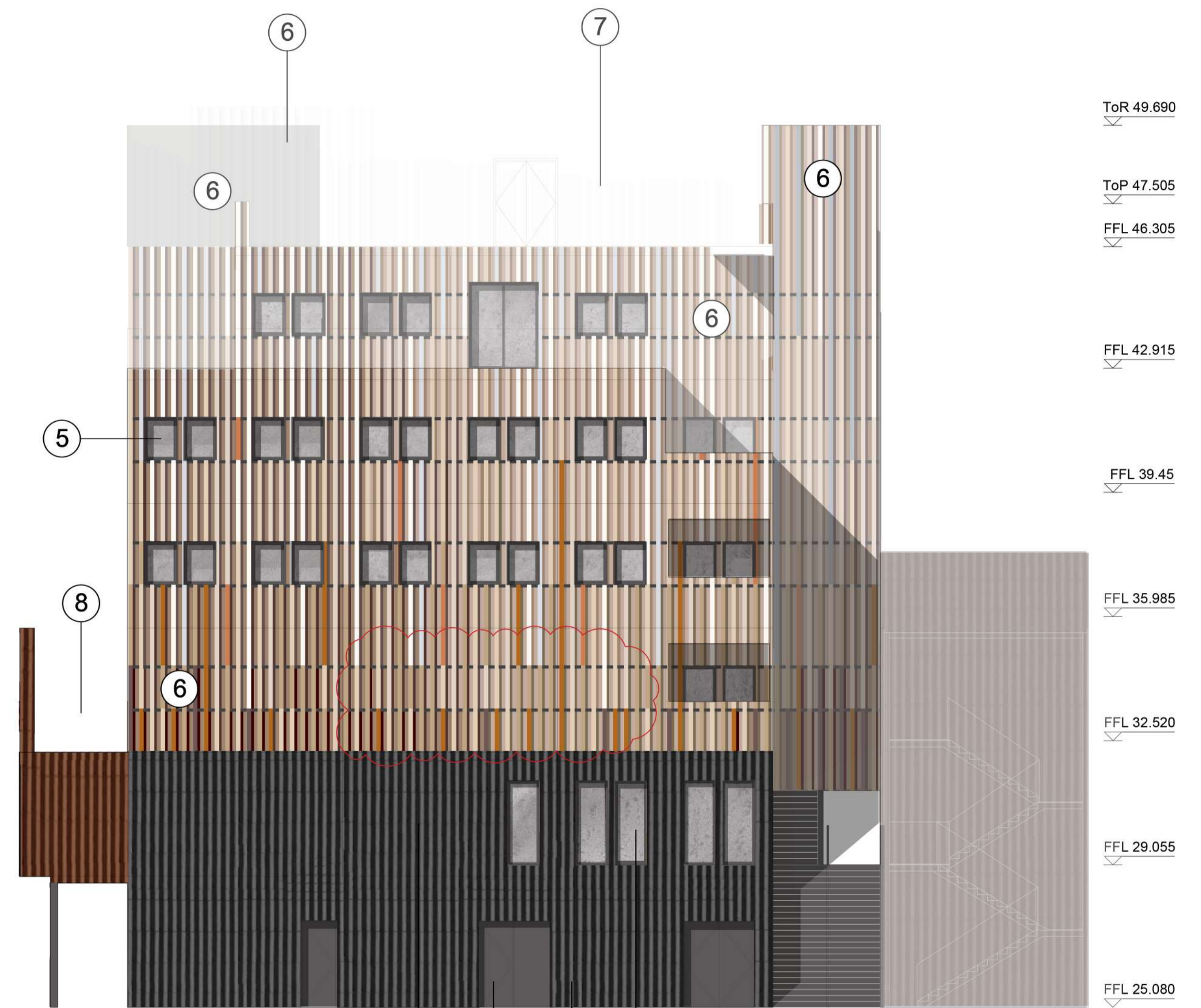
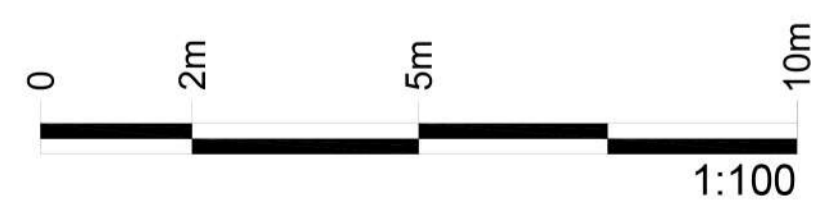


01 West Elevation
1:100@A1



02 East Elevation
1:100@A1



Rev	Description	Drawn	Checked	Approved	Con App
C02	Internal layout amended Window positions changed	GR	JSN	APB	
C 01	Contract Issue	GR	JSN	APB	
P2	Tags updated	GR	JSN	APB	
P1	Initial Issue	GR	JSN	APB	

HS2 accepts no responsibility for any circumstances which arise from the reproduction of this document after alteration, amendment or abbreviation or if it is issued in part or issued incompletely in any way.

© Crown Copyright and database right 2020. All rights reserved. Ordnance Survey Licence number 100049190

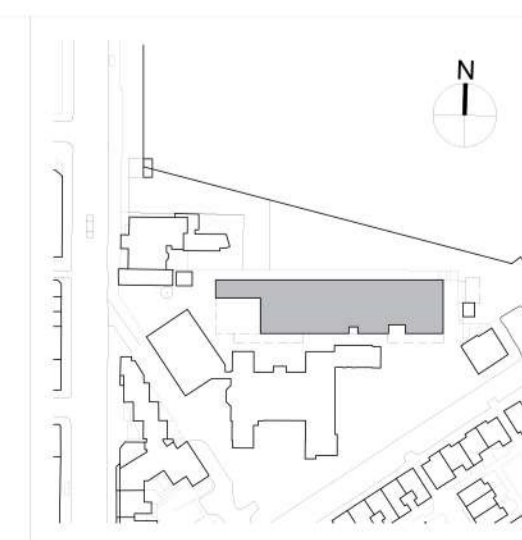
© Crown Copyright material is reproduced with the permission of Land Registry under delegated authority from the Controller of HMSO. This material was last updated on 2020 and may not be copied, distributed, sold or published without the formal permission of Land Registry. Only an official copy of a title plan or register obtained from the Land Registry may be used for legal or other official purposes.

Scale with caution as distortion can occur.

Legends/Notes:

Materials Key:

1. Profiled metal cladding. Colour: RAL 9017 (Traffic Black)
2. Profiled metal cladding. Colour: RAL 8015 (Chestnut Brown)
3. Aluminium windows to match cladding colour. RAL 9017 (Traffic Black)
4. Aluminium windows to match cladding colour. RAL 8015 (Chestnut Brown)
5. PVCu windows. RAL 9007 (Grey Aluminium)
6. Applied coloured & patterned wrap. Refer to Design & Access Statement for details
7. Acoustic louvered plant enclosure. RAL 7035 (Light Grey)
8. Galvanized handrail.



HS2

OFFICIAL

Registered in England
Registration No. 06791686
Registered office:
2 Snow Hill, Queensway,
Birmingham, B4 6GA

Project/Contract Proposed Maria Fidelis CSC & Site Accommodation, London. NW1 2HR 1CP01		Creator/Originator MDS	Sub-Originator FBM
Zone SS08	Work Package Description SL23	Discipline/Function AR	System Description DEL
Drawing Title West & East Elevations		Drawn by GR	Checked by JSN
		Approved by APB	Date 27/09/2021
Scale 1:100	Size A1	Stage 3	Suitability C
Drawing No. 1CP01-MDS_FBM-AR-DEL-SS08_SL23-000002			Rev. C 02