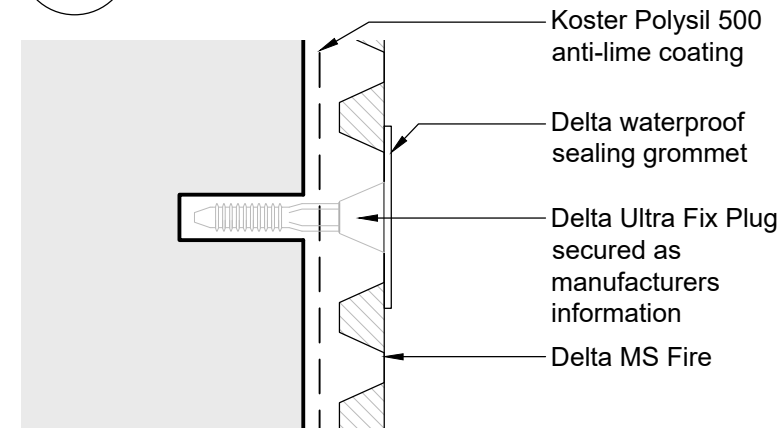
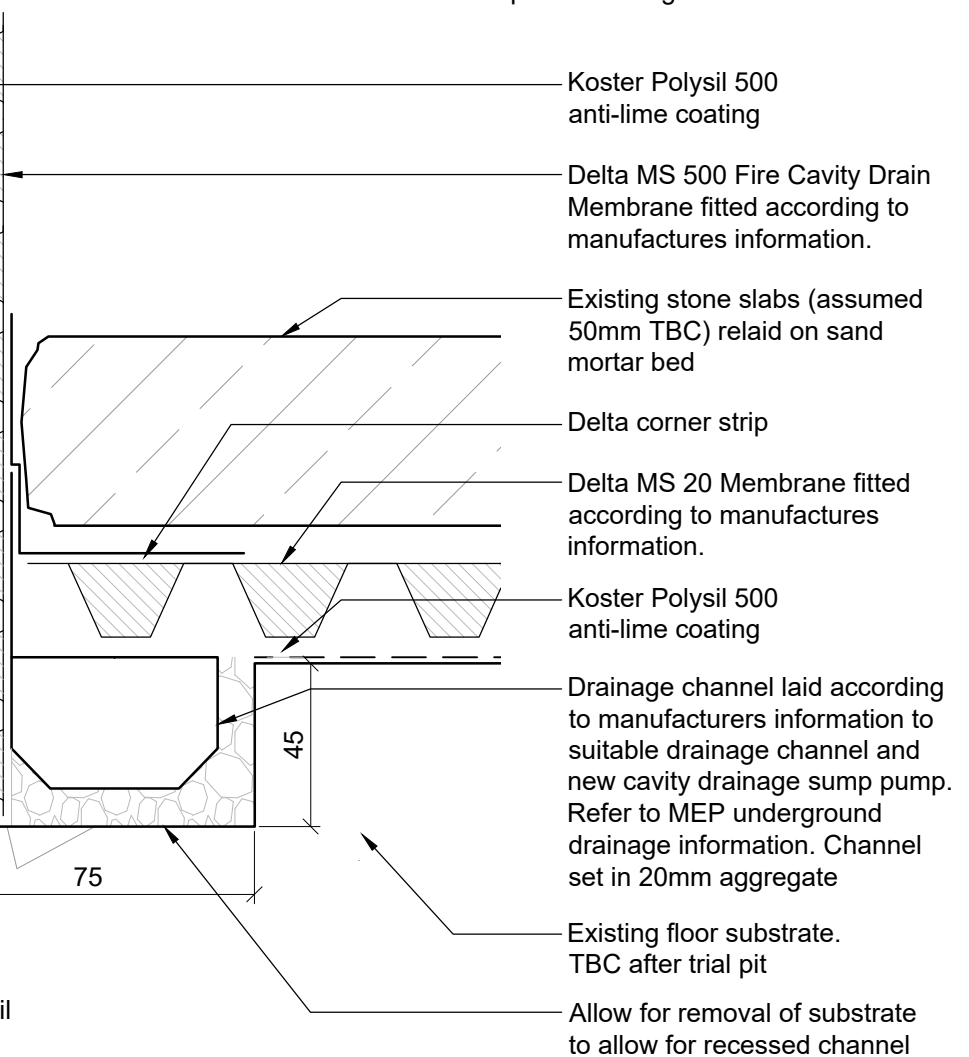


3
3016 Fixing Detail
1:2 @ A3



04
3016 Drainage Floor Detail
1:2 @ A3



- NOTES**
1. Drawings based on survey by others.
 2. Drawings to be read in conjunction with all schedules and specification.
 3. Drawing to be read in conjunction with DIA drawing 2000
 4. Refer to M&E Engineer's specifications and proposals.
 5. Refer to Structural Engineer's specifications and proposals for all structural work.
 6. Notify architect in writing of any discrepancies or omissions.
 7. Survey information by others. All existing dimensions to be confirmed on site.
 8. Drawing is not to be used for construction. Detail to be designed by contractor.
 9. Allow to plug historic coal drop in vault 2, to match existing adjacent, to reduce waste entering vault. Historic cover to be retained.
 10. Sump pump location to be provided by specialist designer

Purpose of Issue:
FOR_CONSTRUCTION

0 200 400 1000
Scale 1:20 mm

0 20 40 100
Scale 1:2 mm

<div>Notes</div> <div><div>1. Any dwg format drawing is to be read in conjunction with and at the scale of the accompanying pdf.</div><div>2. Where colours other than black or grey are used, the drawing must be plotted in colour.</div><div>3. For status 'C' (Construction) drawings all dimensions are to be checked on site by the contractor, scaling is for Local Authority purposes only.</div><div>4. Unless otherwise indicated, all dimensions are in millimeters.</div><div>5. All information on this drawing is to be read in conjunction with the relevant Donald Insall Associates specification and trade contractors' drawings and information by specialists.</div><div>6. In the event of any discrepancy, please contact us immediately.</div><div>7. This drawing may contain survey information by others and is to be used solely for the purposes for which it was issued.</div><div>8. These are uncontrolled documents issued for information purposes only. If you have any queries regarding the drawings, please contact DIA immediately.</div><div>9. Please note DIA cannot be held responsible for any errors arising from changes made to an uncontrolled dwg file.</div></div>	<div>Drawing Status</div> <div><div>F Feasibility</div><div>S Sketch Design</div><div>P Planning</div><div>B Building Control</div><div>D Design Development</div><div>M Measurement</div><div>T Tender</div><div>C Construction</div><div>R Record</div></div>																																																																																																																																																																																																																																																																																																																													
---	---	--	--	--	--	--	--	--	--	--	--	--	--	--	--	--	--	--	--	--	--	--	--	--	--	--	--	--	--	--	--	--	--	--	--	--	--	--	--	--	--	--	--	--	--	--	--	--	--	--	--	--	--	--	--	--	--	--	--	--	--	--	--	--	--	--	--	--	--	--	--	--	--	--	--	--	--	--	--	--	--	--	--	--	--	--	--	--	--	--	--	--	--	--	--	--	--	--	--	--	--	--	--	--	--	--	--	--	--	--	--	--	--	--	--	--	--	--	--	--	--	--	--	--	--	--	--	--	--	--	--	--	--	--	--	--	--	--	--	--	--	--	--	--	--	--	--	--	--	--	--	--	--	--	--	--	--	--	--	--	--	--	--	--	--	--	--	--	--	--	--	--	--	--	--	--	--	--	--	--	--	--	--	--	--	--	--	--	--	--	--	--	--	--	--	--	--	--	--	--	--	--	--	--	--	--	--	--	--	--	--	--	--	--	--	--	--	--	--	--	--	--	--	--	--	--	--	--	--	--	--	--	--	--	--	--	--	--	--	--	--	--	--	--	--	--	--	--	--	--	--	--	--	--	--	--	--	--	--	--	--	--	--	--	--	--	--	--	--	--	--	--	--	--	--	--	--	--	--	--	--	--	--	--	--	--	--	--	--	--	--	--	--	--	--	--	--	--	--	--	--	--	--	--	--	--	--	--	--	--	--	--	--	--	--	--	--	--