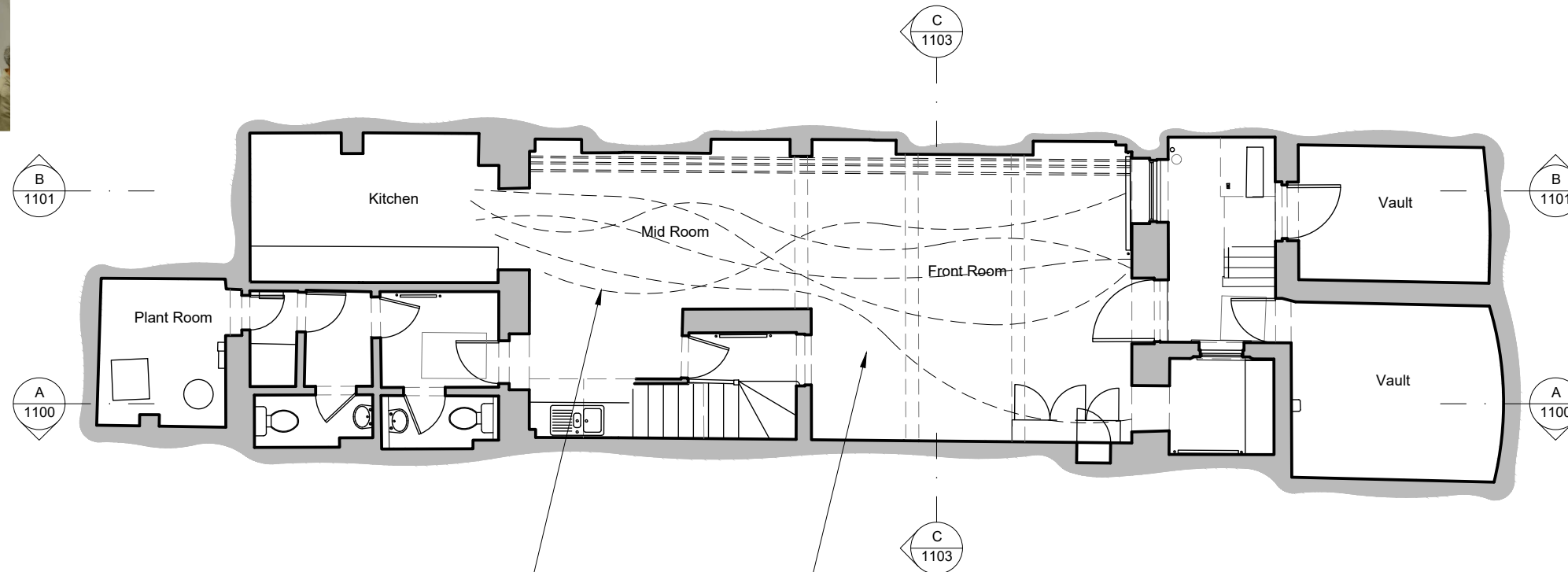


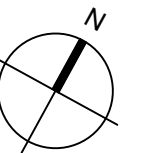
00 Photos of existing ceiling
1050 Donald Insall Associates

- GENERAL NOTES**
- Read all drawings in conjunction with associated specification, schedules and documents.
 - Read all the notes on this drawing.
 - Based on survey information by others.
 - Drawing's level of detail not suitable for construction.
 - Contractor to check and confirm dimensions on site.
 - All fire ratings and new works subject to Building Control approval.

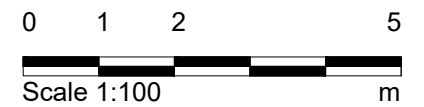


Existing detracting electric cables, pipes, etc.

Existing office grid ceiling already consented to be removed as part of application Ref. 2021/4813/L, approved on the 10th May 2022.



Purpose of Issue:
FOR_LBC



- Notes**
1. Any dwg format drawing is to be read in conjunction with and at the scale of the accompanying pdf.
 2. Where colours other than black or grey are used, the drawing must be plotted in colour.
 3. For status 'C' (Construction) drawings all dimensions are to be checked on site by the contractor, scaling is for Local Authority purposes only.
 4. Unless otherwise indicated, all dimensions are in millimeters.
 5. All information on this drawing is to be read in conjunction with the relevant Donald Insall Associates specification and trade contractors' drawings and information by specialists.
 6. In the event of any discrepancy, please contact us immediately.
 7. This drawing may contain survey information by others and is to be used solely for the purposes for which it was issued.
 8. These are uncontrolled documents issued for information purposes only. If you have any queries regarding the drawings, please contact DIA immediately.
 9. Please note DIA cannot be held responsible for any errors arising from changes made to an uncontrolled dwg file.

Drawing Status				
F	Feasibility			
S	Sketch Design			
P	Planning			
B	Building Control			
D	Design Development			
M	Measurement			
T	Tender			
C	Construction			
R	Record			

Rev	Date	Dwn	Auth	Revision
0	30-06-22	MXV	RD	Issued for LBC

Donald Insall Associates
Chartered Architects and Historic Building Consultants

12 Devonshire Street
London W1G 7AB
(+44) 020 7245 9888
london@insall-architects.co.uk

25 John Street, London

Basement Plan - As Existing Reflected Ceiling Plan	Project	JSC25.01	No	1050
	Scale (A3)	1: 100	Status	3P
			Revision	0