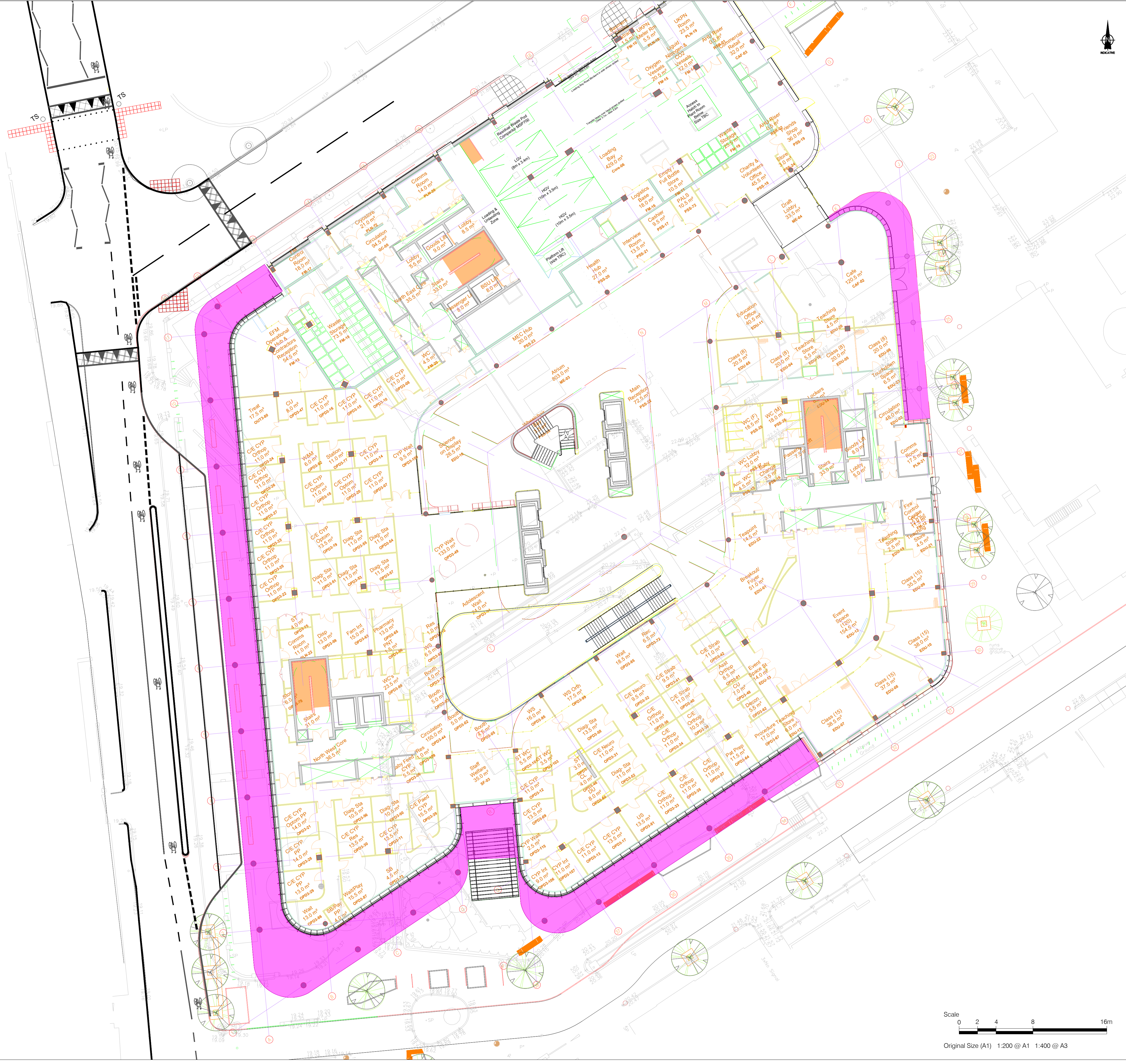


ISO A1 594mm x 841mm
 Approved: NS
 Checked: JAC
 Designer: CC
 Project Management Initials: JAC
 Latest Revision Initials: JAC
 Project Reference Number: 20220126
 Last saved by: CALLAWAYC(2022-01-24) Last Plotted: 2022-01-26
 Filename: \UK\STA\IPFSW001\UK\STA\IPFSW001-VOL2\HOME\DP\PROJECTS\MOORFIELDS\CAD\WIP\210310_S278\SECTION278.DWG
 Printed on 81% Post-Consumer Recycled Content Paper

This drawing includes Ordnance Survey material with the permission of Ordnance Survey on behalf of The Controller of Her Majesty's Stationery Office. © Crown Copyright AECOM Limited, Licence Number AL100019139



CONSULTANT
 AECOM LTD
 AECOM HOUSE
 63-77 VICTORIA STREET
 ST ALBANS, HERTFORDSHIRE
 +44 (0)1727 535 000
 www.aecom.com
PROJECT
 ORIEL

CLIENT
 MOORFIELDS EYE HOSPITAL NHS
 FOUNDATION TRUST
 UCL Institute of Ophthalmology
 Moorfields Eye Charity

- NOTES**
- ALL DIMENSIONS ARE IN METRES UNLESS STATED OTHERWISE. ALL LEVELS ARE IN METRES AND RELATE TO ORDNANCE DATUM.
 - DO NOT SCALE FROM ANY DRAWING. WORK TO FIGURED DIMENSIONS ONLY. ANY DISCREPANCIES IN DIMENSION ARE TO BE REFERRED TO THE DESIGNER BEFORE WORK IS PUT TO HAND.

KEY

Colonnade Area

ISSUE/REVISION

| IR | DATE | DESCRIPTION |
|----|------------|-------------------------|
| A | 26/01/2022 | Updated building layout |

SHEET TITLE

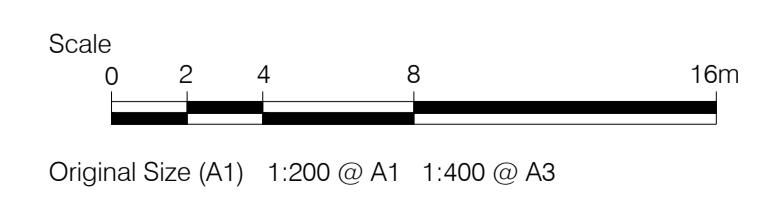
Colonnade Area Plan

SHEET NUMBER

60588325-SU-006

SCALE

Scale 1:200 @ A1



This drawing has been prepared for the use of AECOM's client. It may not be used, modified, reproduced or relied upon by third parties, except as agreed by AECOM in writing. AECOM accepts no responsibility, and denies any liability whatsoever, to any party that uses or relies on this drawing without AECOM's express written consent. Do not scale this document. All measurements must be obtained from the stated dimensions.