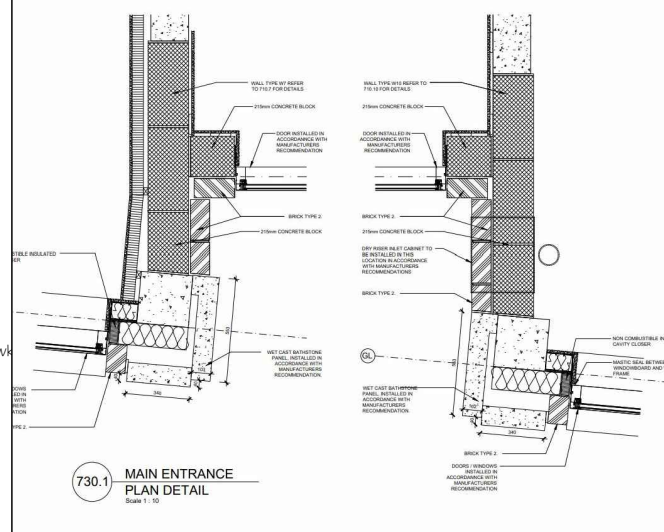
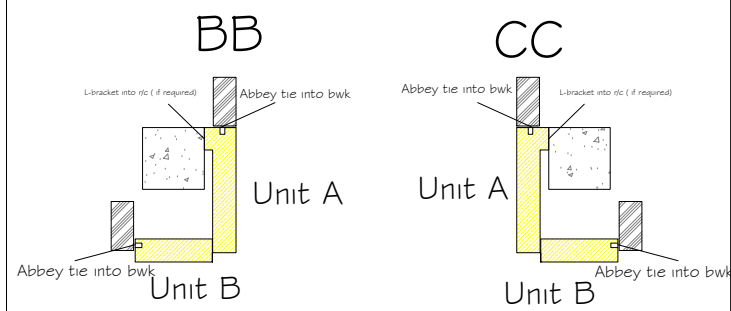
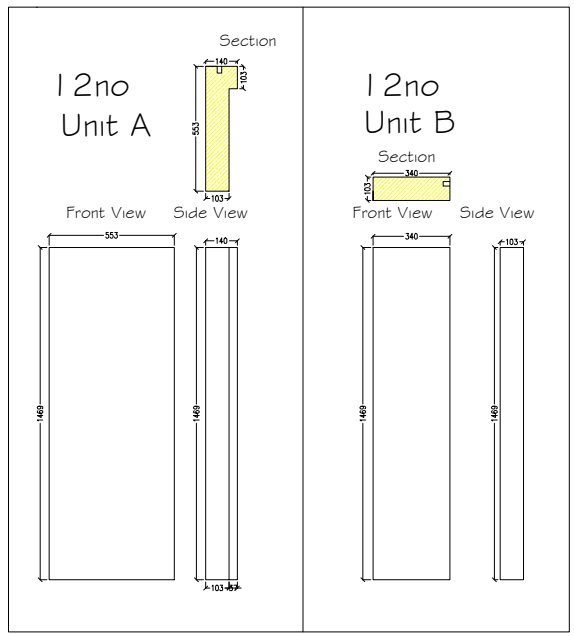
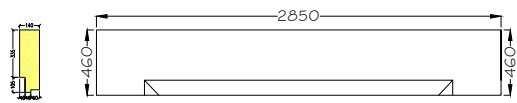


Head Unit (to be templated on site)



This drawing has been fully approved for manufacture by:

Company	-----
Position	-----
Date	-----
Signed	-----
Print	-----

Revision	Date	Description



ELEGANT STONE LIMITED

Unit 1 Moor End Works, Cleckheaton, West Yorkshire, BD19 3TT
 Tel: 01274 874360 Fax: 01274 851025
 Email: caststone@elegantstoneltd.co.uk Web: www.elegantstoneltd.co.uk



MANUFACTURERS OF ARCHITECTURAL CAST STONE

Notes:
 All dimensions are to be checked by client prior to manufacture and any discrepancy(s) to be reported immediately to Elegant Stone Ltd.
 The drawing must not be reproduced in any part or form without prior written consent.
 DO NOT SCALE from this drawing. If in doubt ask.
 All dimensions are shown in millimeters unless stated otherwise.
 All components to have codes printed clearly on unseen faces.
 Any shown fixings, restraints, supports or steelwork is strictly for indicative purposes only and is to be designed and supplied by others.
 Please send one signed and approved copy of this drawing back to Elegant Stone Ltd to enable any manufacture to commence.

Project: 1 Hampshire Street	
Client: Stonework	
Date: 19/08/2021	Draw No: 23814.01
Scale: NTS	Scale: RD
Author: NTS	Checker: APPROVAL

DO NOT SCALE OFF DRAWING. ALL DIMENSIONS TO BE GIVEN ON THIS DRAWING. © 2021 STONEMAN IN CONCRETE

Front View

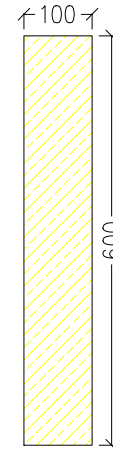
2850

600

1 HAMPSHIRE STREET

Carved Times New Roman Font

Section



This drawing has been fully approved for manufacture by:			
Company	Revision	Date	Description
Position			
Date			
Signed			
Print			



ELEGANT STONE
LIMITED

Unit 1 Moor End Works, Cleckheaton, West Yorkshire, BD19 3TT

Tel: 01274 874360 Fax: 01274 851025

Email: caststone@elegantstoneltd.co.uk Web: www.elegantstoneltd.co.uk



MANUFACTURERS OF ARCHITECTURAL CAST STONE

Notes:

All dimensions are to be checked by client prior to manufacture and any discrepancy(s) to be reported immediately to Elegant Stone Ltd

The drawing must not be reproduced in any part or form without prior written consent.

DO NOT SCALE from this drawing. If in doubt ask.

All dimensions are shown in millimeters unless stated otherwise.

All components to have codes printed clearly on unseen faces.

Any known faults, restraints, supports or steelwork is strictly for indicative purposes only and is to be designed and supplied by others.

Please send one signed and approved copy of this drawing back to Elegant Stone Ltd to enable any manufacture to commence.

Project: 1 Hampshire Street		
Title: Stonework Entrance		
Date: 19/08/2021	Draw No: 23814.02	Rev: .
Author: NTS	Check: RD	Release: APPROVAL
DO NOT SCALE OFF DRAWING. ALL DIMENSIONS TO BE CHECKED ON SITE. © 2021 Elegant Stone Limited		