

ALL DIMENSIONS, LEVELS AND CLEARANCES TO BE CHECKED ON SITE PRIOR TO WORKS COMMENCING

THIS DRAWING SHOULD BE READ IN CONJUNCTION WITH ALL OTHER PROJECT RELATED DRAWINGS, SPECIFICATIONS AND DOCUMENTS AS PART OF A SINGLE PROJECT PACKAGE.

ANY DISCREPANCY BETWEEN THIS DRAWING, OTHER DRAWINGS FORMING PART OF THIS CONTRACT, OR THE SPECIFICATION / BILLS OF QUANTITIES MUST BE CLARIFIED BEFORE COMMENCEMENT OF ANY WORK OR ORDERING OF ANY MATERIALS.

PLEASE CONSULT THE AUTHOR OR PROJECT MANAGER SHOULD  
THE READER REQUIRE CLARIFICATION ON ANY PART OF THIS  
DRAWING.

THE COPYRIGHT OF THE DRAWING AND DESIGN IS THE PROPERTY OF THE COMPANY. THIS INFORMATION HAS BEEN ISSUED UNDER SPECIFIC TERMS FOR THIS PROJECT AND MAY ONLY BE USED AND REPRODUCED ACCORDINGLY.

## NOTES

P02	03.02.22	SEJ	BG	JM	Issued for Planning Issue
P01	02.02.22	SEJ	BG	JM	Issued for Comment
Rev	Date	By	Chk	Apr	Comment

BRINGING IDEAS TO LIFE



FRANKHAM

**Frankham Consultancy Group Limited**  
E: [enquire@frankham.com](mailto:enquire@frankham.com)  
[www.frankham.com](http://www.frankham.com)

<b>SIDCUP OFFICE</b>	<p>Irene House Five Arches Business Park Maidstone Road Sidcup, Kent DA14 5AE T: 020 8309 7777</p>	<b>OXFORD OFFICE</b>	<p>Citibase Oxford New Barclay House 234 Botley Road Oxford OX2 0HP T:01865 322500</p>
<b>LONDON OFFICE</b>	<p>First Floor Bridge House 181 Queen Victoria Street London EC4V 4EG T: 020 7651 0790</p>	<b>STEVENAGE OFFICE</b>	<p>Suite 237, Second Floor Kings Court Business Centre London Road, Stevenage Hertfordshire SG1 2NG T:020 3714 7063</p>

Client:

AD Group

Project Title:  
37, 37A & 37B Glenloch Road,  
Camden, NW3 4DJ  
Window and Rear Door  
Replacement Works

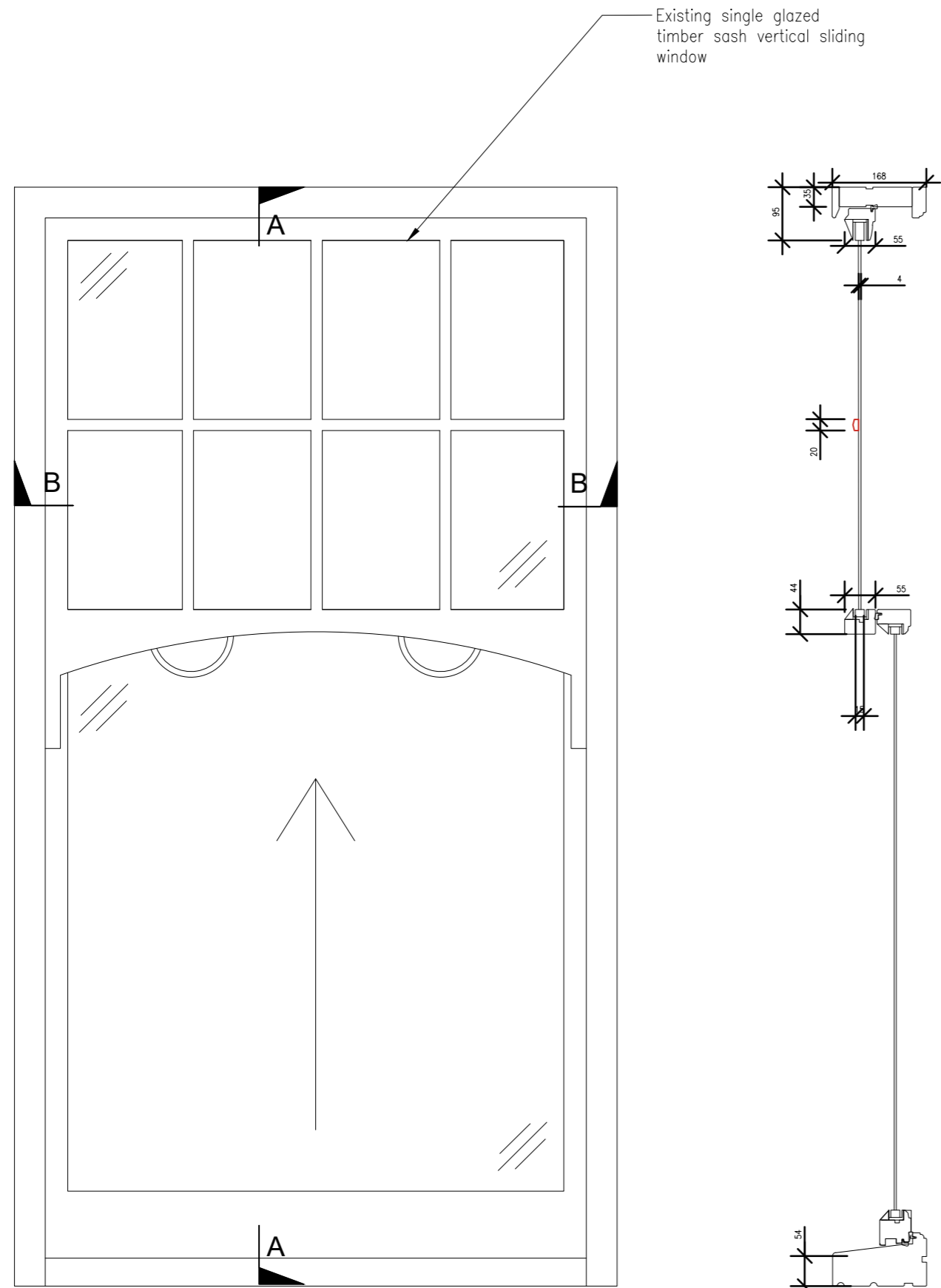
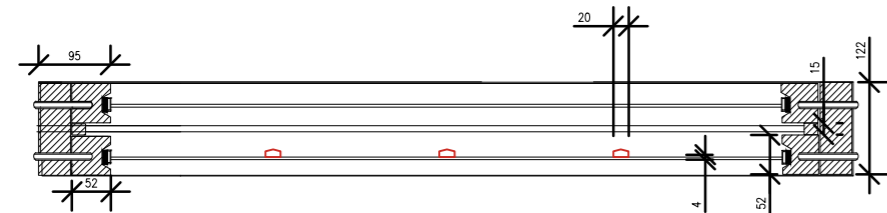
Drawing Title:

Existing and Proposed Window Details 1

Status:

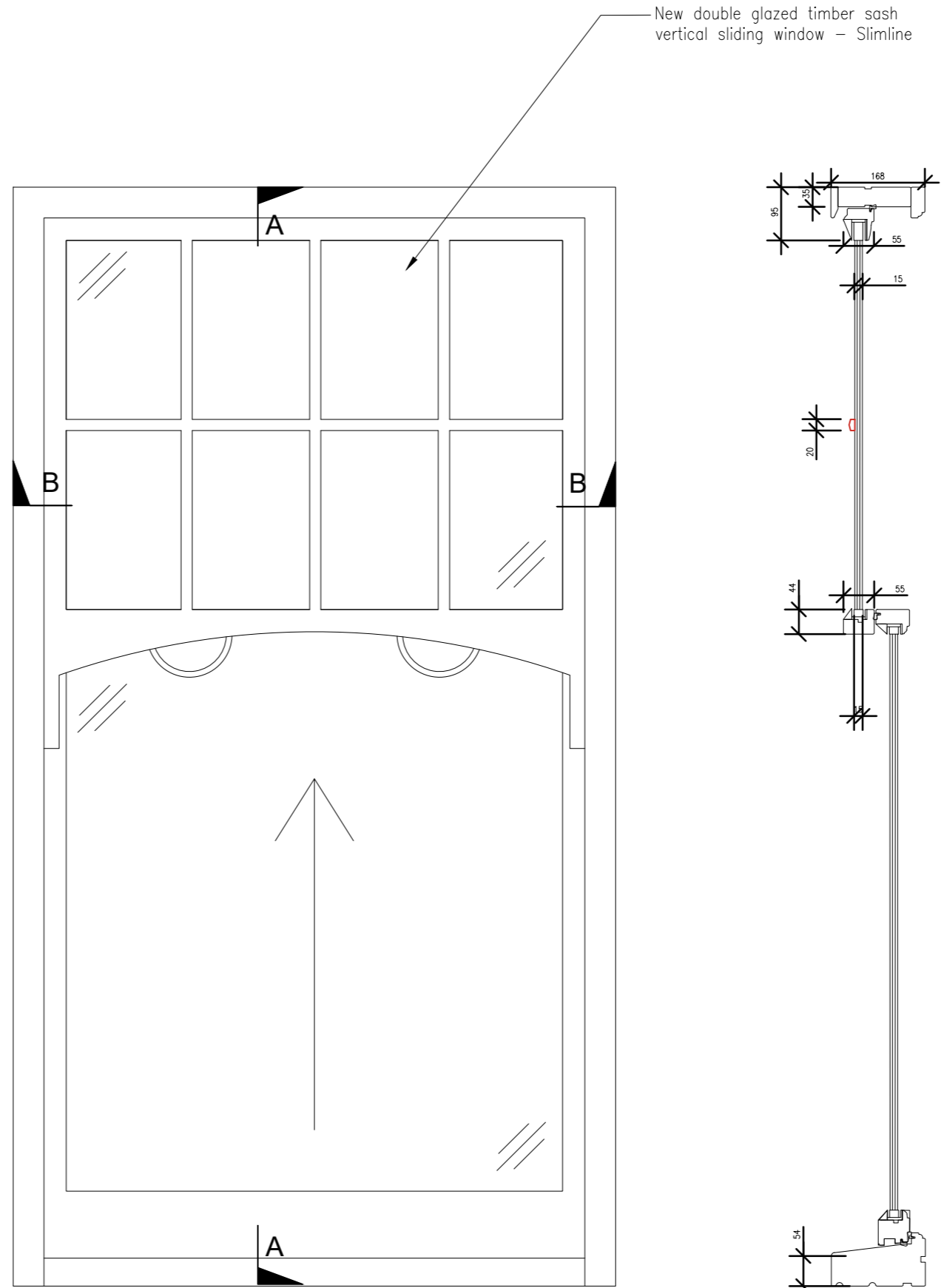
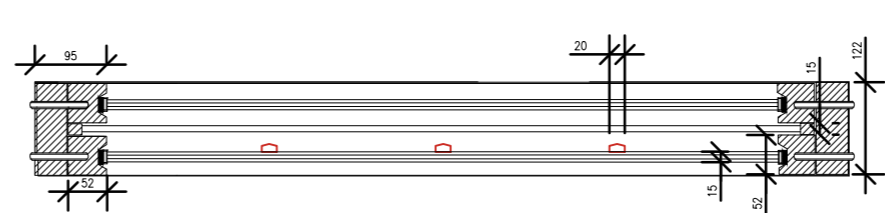
## PLANNING ISSUE

Drawn By: <b>SEJ</b>	Designed By: <b>SEJ</b>	Checked By: <b>BG</b>	Approved By: <b>JM</b>
Original Issue Date: <b>02/02/2022</b>		Scale @ A2: <b>1:10</b>	
Job No/ File Ref <b>228021</b>		Originator <b>FCG</b>	Zone <b>MB</b>
Type <b>DR</b>	Discipline <b>B</b>	Number <b>2400</b>	Level <b>EL</b>
		Suitability <b>S4</b>	Revision <b>P02</b>

Elevation

Detail A

EXISTING TYPICAL SLIDING SASH WINDOW DETAIL  
(Refers to W05, W06, W07, W10, W11, W12, W14, W16 & W17 – sizes vary similar style)  
Scale @ 1:10

Elevation

Detail A

PROPOSED TYPICAL SLIDING SASH WINDOW DETAIL  
(Refers to W05, W06, W07, W10, W11, W12, W14, W16 & W17  
sizes vary similar style)

