

General Note:  
Care should be taken when drawings are printed  
to avoid image distortion.

Copyright:  
This document and all information contained herein  
is the sole property of CBRE Ltd, reproduction  
in any form is strictly forbidden unless permission in  
writing is obtained.

The survey grid shown on this drawing is positioned  
on a local grid and levels.



Earlham Street Elevation

**CBRE**

CBRE Limited, 51 Marline Court, 10 Paternoster Row, London EC4M 7HP  
Switchboard : 0207 182 2000 Fax : 0207 182 3007 Web : www.cbre.com

Project: **Seven Dials**

Address: **Earlham Street  
London  
WC2H 9LA**

Drawing: **Existing Elevations**

Date: **28/01/22** Project No: **280122**

Scale: **1:50@A1** Alt Scale:

Drawn: **MF** Checked:

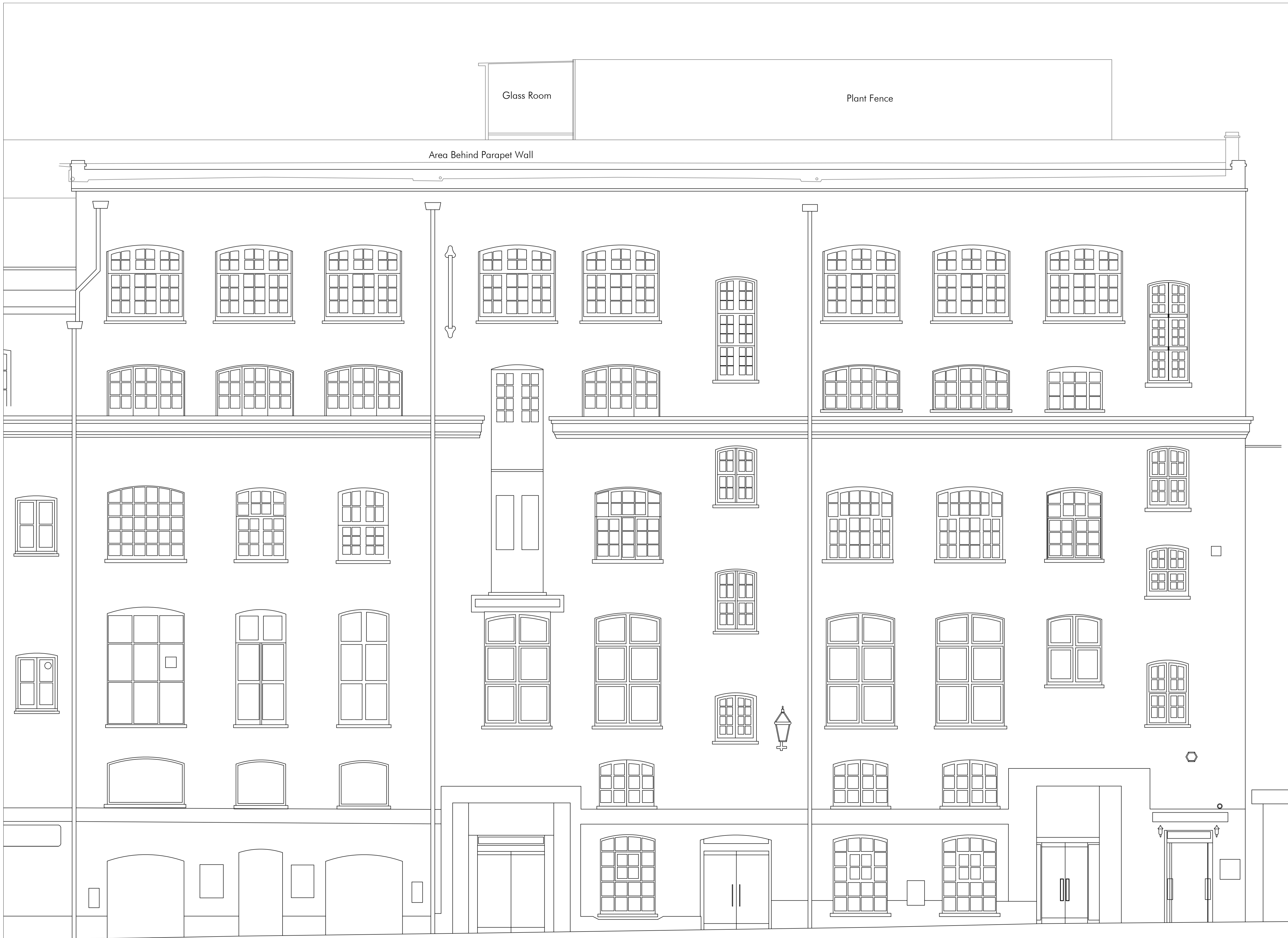
Draw. No. **280122-E-01-1a** Rev. No. **A**

Project Status: **FINAL**

General Note:  
Care should be taken when drawings are printed to avoid image distortion.

Copyright:  
This document and all information contained herein is the sole property of CBRE Ltd, reproduction in any form is strictly forbidden unless permission in writing is obtained.

The survey grid shown on this drawing is positioned on a local grid and levels.



Earlham Street Elevation



CBRE Limited, 51 Mark Lane, London EC3A 7HP  
Switchboard: 0207 182 2000 Fax: 0207 182 3007 Web: www.cbre.com

Project: Seven Dials

Address: Earlham Street  
London  
WC2H 9LA

Drawing: Existing Elevations

Date: 28/01/22 Project No: 280122

Scale: 1:50@A1 All Scale:

Drawn: MF Checked:

Draw. No: 280122-E-01-1b Rev. No: A

Project Status: FINAL

General Note:  
Care should be taken when drawings are printed to avoid image distortion.

Copyright:  
This document and all information contained herein is the sole property of CBRE Ltd, reproduction in any form is strictly forbidden unless permission in writing is obtained.

The survey grid shown on this drawing is positioned on a local grid and levels.



# Shelton Street Elevation

## CBRE

CBRE Limited, 51 Marline Court, 10 Paternoster Row, London EC4M 3HP  
Switchboard : 0207 182 2000 Fax : 0207 182 3007 Web : www.cbre.com

Project:	Seven Dials		
Address:	Shelton Street London WC2H 9LA		
Drawing:	Existing Elevation		
Date:	28/01/22	Project No:	280122
Scale:	1:50@A1	Alt Scale:	
Drawn:	MF	Checked:	
Draw. No:	280122-E-02-2a	Rev. No:	A
Project Status:	FINAL		



Shelton Street Elevation

General Note:  
Care should be taken when drawings are printed to avoid image distortion.

Copyright:  
This document and all information contained herein is the sole property of CBRE Ltd, reproduction in any form is strictly forbidden unless permission in writing is obtained.

The survey grid shown on this drawing is positioned on a local grid and levels.



CBRE Limited, 10 Marsh Wall, London EC4A 3DF  
Switchboard: 0207 182 2000 Fax: 0207 182 3007 Web: www.cbre.com

Project: Seven Dials

Address: Shelton Street  
London  
WC2H 9LA

Drawing: Existing Elevation

Date: 28/01/22 Project No: 280122

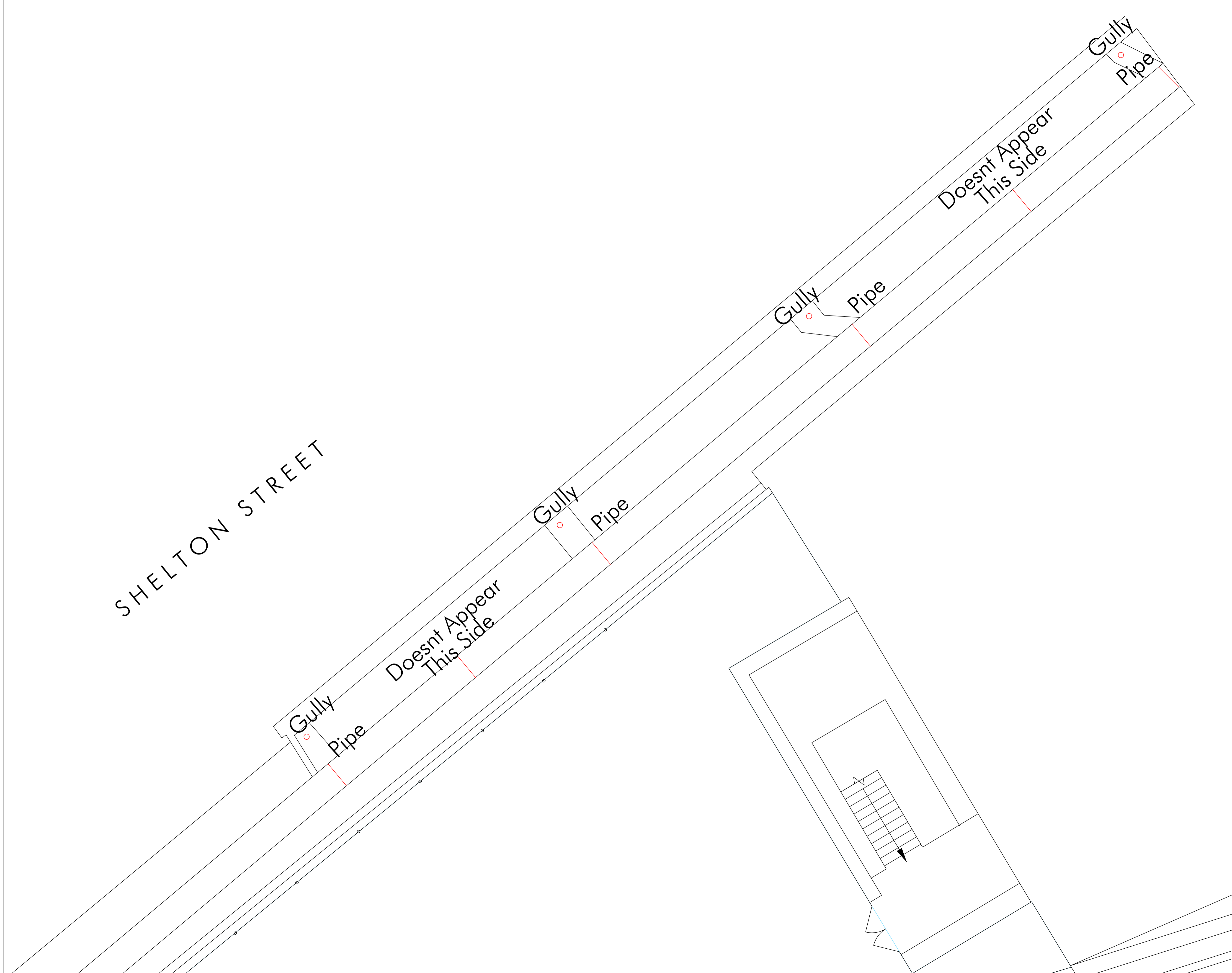
Scale: 1:50@A1 Alt Scale:

Drawn: MF Checked:

Dwg. No. Rev. No.

280122-E-02-2a A

Project Status: FINAL



General Note:  
Care should be taken when drawings are printed to avoid image distortion.

Copyright:  
This document and all information contained herein is the sole property of CBRE Ltd. Reproduction in any form is strictly forbidden unless permission in writing is obtained.

The survey grid shown on this drawing is positioned on a local grid and levels.

- XXX.XXX Height from Arbitrary Datum Line
- X.XX Height from Finished Floor to Slab Above
- X.XX Height from Finished Floor to False Ceiling Above
- BX.XX Height from Finished Floor to Beam Above
- RX.XX Height from Finished Floor to Ridge Above

**CBRE**

CBRE Limited, 51 Marline Court, 10 Paternoster Row, London EC4M 3HP  
Switchboard : 0207 182 2000 Fax : 0207 182 3007 Web : www.cbre.com

Project:	Seven Dials
Address:	Shelton Street London WC2H 9LA
Drawing:	Existing Roof Pipe Plan
Date:	28/01/22 Project No: 280122
Scale:	1:50@A1 All Scale:
Drawn:	MF Checked:
Dwg. No:	0170728-R-A
Rev. No:	A
Project Status:	FINAL

STK



General Note:  
Care should be taken when drawings are printed to avoid image distortion.

Copyright:  
This document and all information contained herein is the sole property of CBRE Ltd. Reproduction in any form is strictly forbidden unless permission in writing is obtained.

The survey grid shown on this drawing is positioned on a local grid and levels.

- XXX.XXX Height from Arbitrary Datum Line
- X.XX Height from Finished Floor to Slab Above
- X.XX Height from Finished Floor to False Ceiling Above
- BX.XX Height from Finished Floor to Beam Above
- RX.XX Height from Finished Floor to Ridge Above

**CBRE**

CBRE Limited, 51 Mark Lane, London EC3A 7HP  
Switchboard : 0207 182 2000 Fax : 0207 182 3007 Web : www.cbre.com

Project:	Seven Dials		
Address:	Shelton Street London WC2H 9LA		
Drawing:	Existing Roof Pipe Plan		
Date:	28/01/22 Project No: 280122		
Scale:	1:50@A1 All Scale:		
Drawn:	MF Checked:		
Dwg. No.	0170728-R-B	Rev. No.	A
Project Status:	FINAL		