

## Groupwork

### Technical Note

---

Project        Greville Street

Title         Planning Condition 3(C)

Ref.          248

Rev.         B

Date         08.06.22

---

## Groupwork

### 1.0 Introduction

---

1.1 The purpose of this technical note is to outline information submitted as part of the discharge of condition 3(C) of application 2018/0910 – *“Samples and manufacturer's details of all new facing materials including glazing”*.

1.2 This technical note will list the full manufacturers details and images of each facing material, and is issued alongside marked up elevations that highlight where each material is present on the facades.

## Groupwork

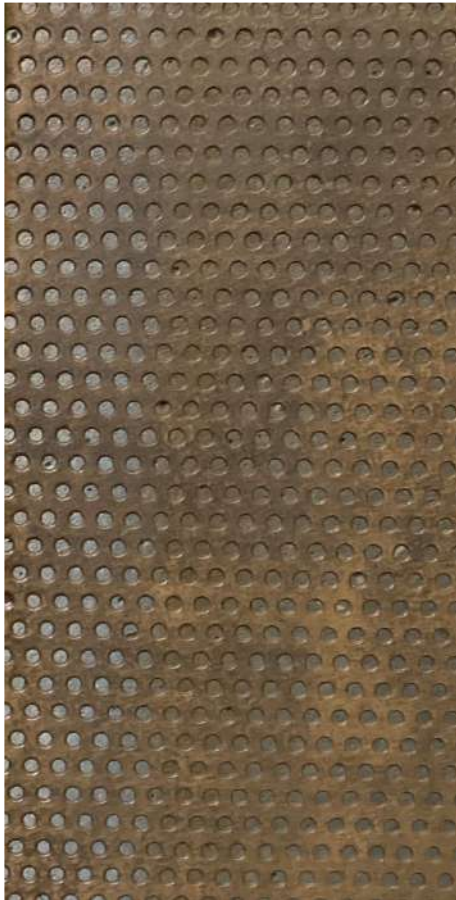
### 2.0 Perforated Façade Panels – Overpainted

---

#### 2.1 Material details:

- **Material** – Perforated aluminium
- **Perforated aluminium manufacturer** – Cadisch Precision meshes
- **Thickness** – 2mm thick perforated aluminium sheet
- **Hole size and pitch** – Staggered round perforation with 6mm diameter holes and 10mm pitch
- **Finish** – RAL8022 polyester powder coating with custom overpainted finish in RAL8008
- **Finish details** – IGP polyester powder coating with custom overpainted finish applied to match approved elevations in *12.0 Paint Application Elevations*.
- **Façade fabricator** – Dmitro Facades Limited

#### 2.2 Images:



90% Coverage



95% Coverage

## Groupwork

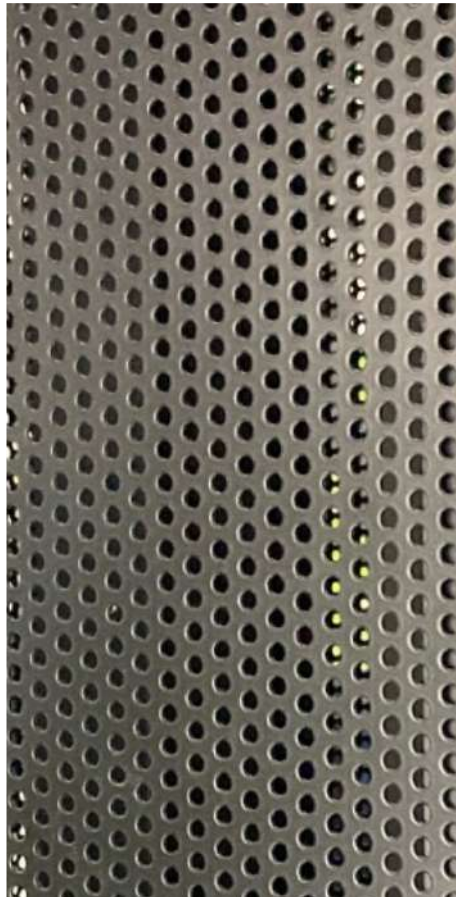
### 3.0 Proposed Perforated Façade Panels – Non-Overpainted

---

#### 3.1 Material details:

- **Material** – Perforated aluminium
- **Perforated aluminium manufacturer** – Cadisch Precision meshes
- **Thickness** – 2mm thick perforated aluminium sheet
- **Hole size and pitch** – Staggered round perforation with 6mm diameter holes and 10mm pitch
- **Finish** – RAL8022 polyester powder coating
- **Finish details** – IGP polyester powder coating to match approved elevations in *12.0 Paint Application Elevations*.
- **Façade fabricator** – Dmitro Facades Limited

#### 3.2 Images:



#### 4.0 Breather membrane

---

##### 4.1 Material details

- **Manufacturer / product details** – Illbruck ME010 vapour permeable breather membrane
- **Material** – Polyester
- **Finish** – Black

##### 4.2 Images:



## 5.0 Façade Sub-Frame and Bracketry

---

5.1 Material details:

- **Manufacturer / product details** – A combination of NVELOPE NV1 (T profile) and NV2F (Box section)  
Vertical rainscreen cladding systems
- **Material** – Extruded aluminium profiles
- **Finish details** – Polyester powder coating RAL 9005 black

5.2 Images:



## Groupwork

### 6.0 Façade Panel Rivets

---

6.1 Material details:

- **Manufacturer / product details** – TBC by Dmitro Facades
- **Material** – Aluminium
- **Finish** – Colour polyester powder coating with custom pre-patinated finish
- **Finish details** – IGP polyester powder coating 30% gloss RAL 8022

6.2 Images:



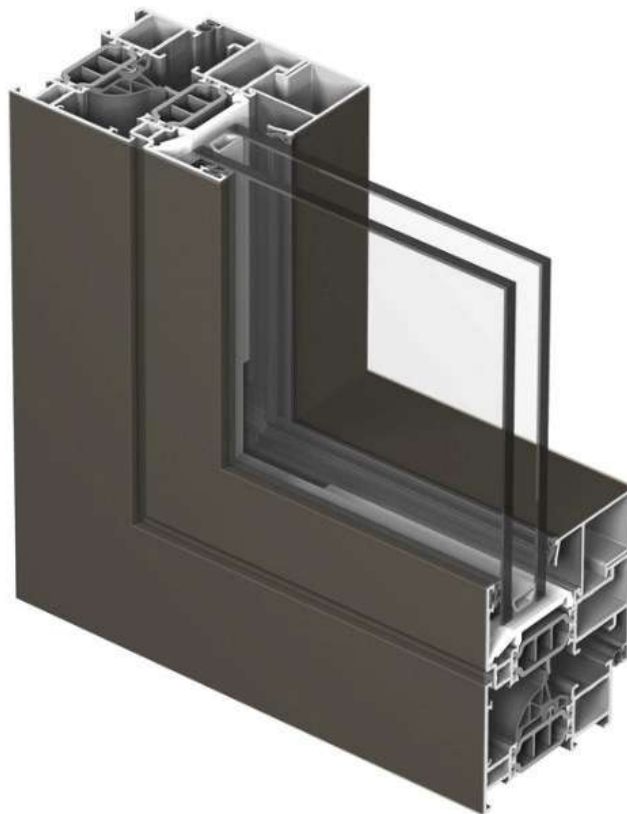
## 7.0 Window Units

---

### 7.1 Material details:

- **Window manufacturer / product details** – Raynaers CS77 window system in ‘functional’ frame style
- **Window frame material** – Extruded aluminium profiles
- **Frame / spandrel panel finish** – Custom colour polyester powder coating
- **Frame finish details** – TIGER Drylac Series 29 Architectural Application polyester powder coating – 029/65650
- **Glazing specification** – Double glazed 6mm panes

### 7.2 Images:





## Groupwork

### 8.0 Windowsills

---

#### 8.1 Material details

- **Windowsill manufacturer / product details** - Raynaers to match CS77 window system
- **Windowsill material** - Extruded aluminium profile
- **Windowsill finish** - Custom colour polyester powder coating
- **Sill finish details** - TIGER Drylac Series 29 Architectural Application polyester powder coating - 029/65650

#### 8.2 Images:



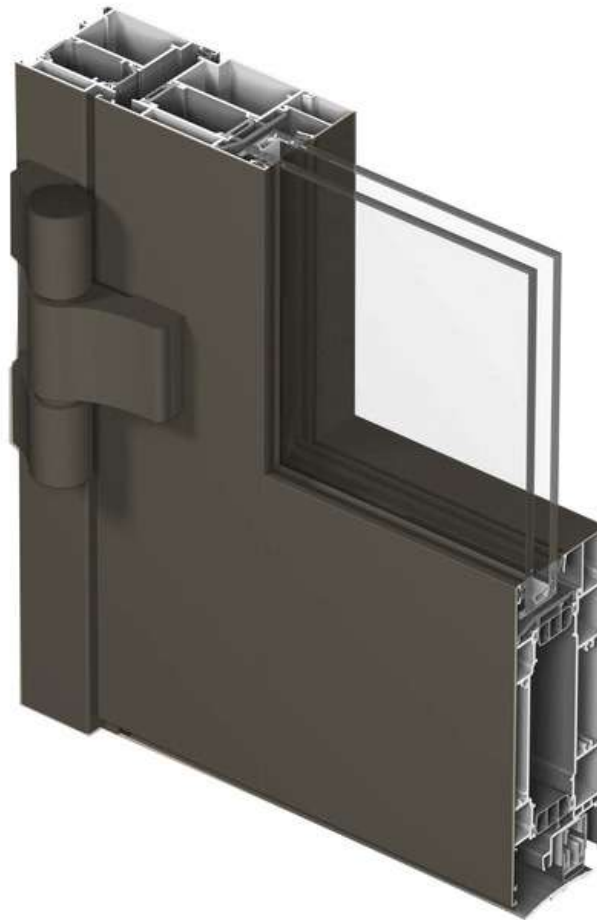
## 9.0 Glazed External Door Units

---

### 9.1 Material details:

- **Door manufacturer / product details** - Raynaers CS77 door system in 'functional' frame style
- **Door frame material** - Extruded aluminium profiles
- **Frame / spandrel panel finish** - Custom colour polyester powder coating
- **Frame finish details** - TIGER Drylac Series 29 Architectural Application polyester powder coating - 029/65650
- **Glazing specification** - Double glazed 6mm panes

### 9.2 Images:



## Groupwork

### 10.0 Steel Doors

---

#### 10.1 Material details:

- **Door manufacturer / product details** – Steeldor single steel door set
- **Door material** – 1.2mm galvanised steel sheet fixed to rockwool core
- **Door frame material** – 1.5mm galvanised steel
- **Door and frame Finish** – Colour polyester powder coating with custom pre-patinated finish
- **Door and frame finish details** – IGP polyester powder coating 30% gloss RAL 8022

#### 10.2 Images:



## Groupwork

### 11.0 Substation Louvred Doors

---

#### 11.1 Material details:

- **Door manufacturer / product details** – Sunray doors
- **Door material** – Galvanised steel
- **Door frame material** – 100 x 50 x 3mm rectangular galvanised steel hollow section to head and jambs with 100 x 10mm flat threshold from galvanised steel
- **Door and frame Finish** – Colour polyester powder coating finish
- **Door and frame finish details** – IGP polyester powder coating 30% gloss RAL 8022

#### 11.2 Images:

No image available

12.0 Paint Application Elevations

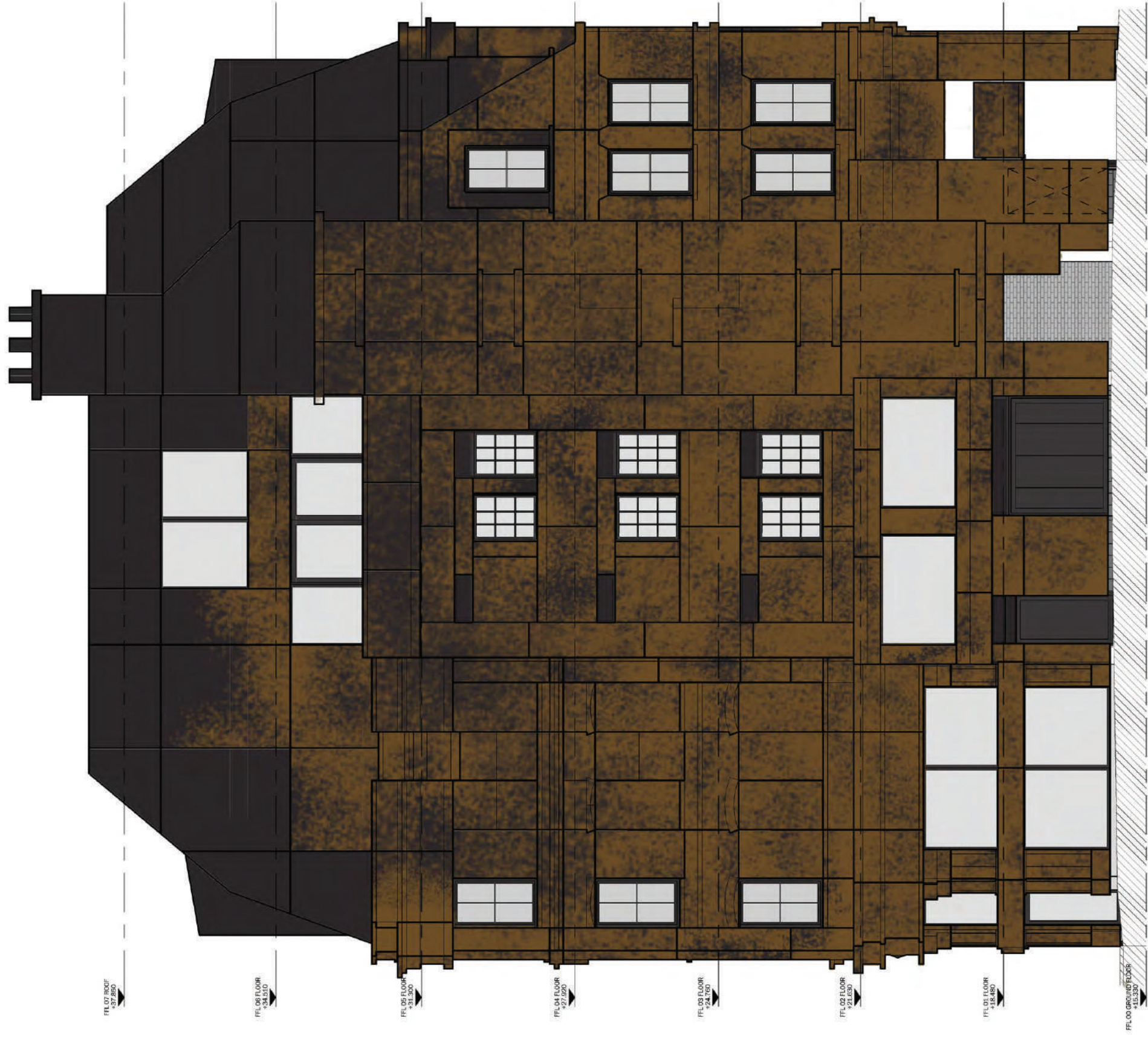
---



|          |                          |                            |                        |
|----------|--------------------------|----------------------------|------------------------|
| Project  |                          | GREVILLE STREET            |                        |
| P01      | Issued for approval      | 24.08.21                   | DB JA                  |
| Rev No   | Revision note            | Date                       | Drawn/Checked          |
| Client   |                          | RED Construction Group Ltd |                        |
| Drawn By | Dimitro Facades          | Scale                      | 1:50                   |
|          | Unit 17, Darnhall Estate | Drawn By                   | DB                     |
|          | Leight Place, Weirton    | Status                     | For approval           |
|          | Kent, DA16 3UH           | Date                       | 24.08.21               |
|          |                          | DWG No                     | GS-DFL-XX-00-DR-X-0801 |
|          |                          | POI                        | Rev                    |
|          |                          | S3                         | P01                    |



DMITRO FACADES  
 Tel: 0207 254 4603  
 E-mail: office@dmicrofacades.co.uk



|          |                          |                            |                        |
|----------|--------------------------|----------------------------|------------------------|
| Project  |                          | GREVILLE STREET            |                        |
| P01      | Issued for approval      | 24.08.21                   | JA                     |
| Rev No   | Revision note            | Date                       | Drawn/Checked          |
| Client   |                          | RED Construction Group Ltd |                        |
| Drawn By | Dimitro Facades          | Scale                      | 1:50                   |
|          | Unit 17, Darnhall Estate | Drawn By                   | DB                     |
|          | Leight Place, Weirton    | Status                     | For approval           |
|          | Kent, DA16 3UH           | Date                       | 24.08.21               |
|          |                          | DWG No                     | GS-DFL-XX-00-DR-X-0802 |
|          |                          | POI                        | Rev                    |
|          |                          | S3                         | P01                    |



Dimitro Facades  
 Unit 17, Darnhall Estate  
 Leight Place, Weirton  
 Kent, DA16 3UH  
 Tel: 0207 254 4833  
 E-mail: office@dimitrofacades.co.uk



FFL 07 ROOF  
+21.850

FFL 06 FLOOR  
+21.510

FFL 05 FLOOR  
+21.300

FFL 04 FLOOR  
+21.050

FFL 03 FLOOR  
+21.700

FFL 02 FLOOR  
+21.650

FFL 01 FLOOR  
+15.450

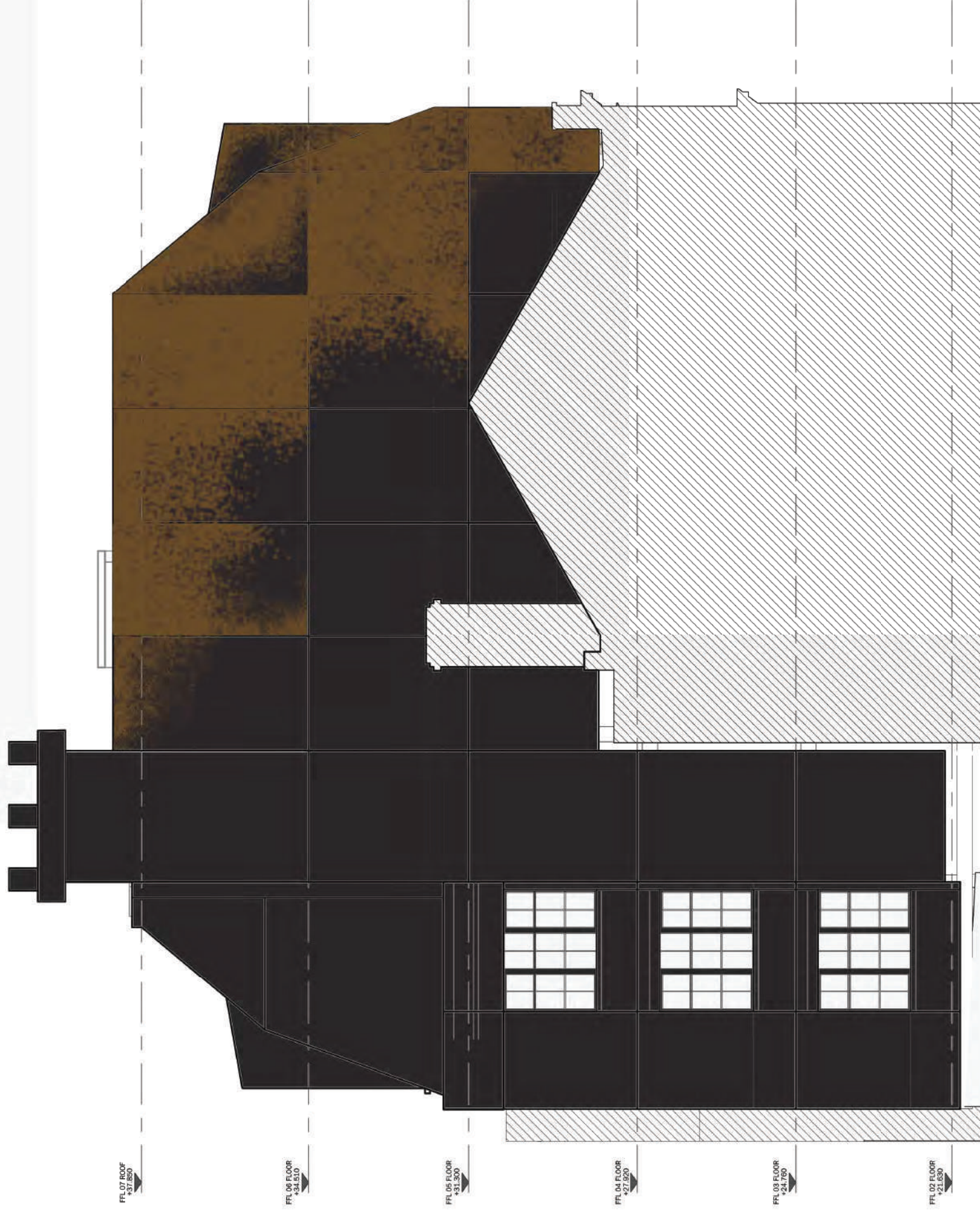
FFL 00 GROUND FLOOR  
+15.350

|          |                          |                            |                        |
|----------|--------------------------|----------------------------|------------------------|
| Project  |                          | GREVILLE STREET            |                        |
| P01      | Issued for approval      | 24.08.21                   | JA                     |
| Rev No   | Revision note            | Date                       | Drawn/Checked          |
| Client   |                          | RED Construction Group Ltd |                        |
| Drawn By | Dimitro Facades          | Scale                      | 1:50                   |
|          | Unit 17, Dunstall Estate | Drawn By                   | DB                     |
|          | Leight Place, Weirton    | Status                     | For approval           |
|          | Kent, DA16 3UH           | Date                       | 24.08.21               |
|          |                          | DWG No                     | GS-DFL-XX-00-DR-X-0803 |
|          |                          | POI                        | S3                     |
|          |                          | Rev                        | P01                    |



Dimitro Facades  
Unit 17, Dunstall Estate  
Leight Place, Weirton  
Kent, DA16 3UH  
Tel: 0207 254 4803  
E-mail: office@dmitrofacades.co.uk





|   |  |                        |               |
|---|--|------------------------|---------------|
| Project   |  | GREVILLE STREET        |               |
| P01   | Issued for approval  | 24.08.21               | DB JA         |
| Rev No  | Revision note  | Date                   | Drawn/Checked |
| Client<br>RED Construction Group Ltd                      |  |                        |               |
| Drawn By  | Dimitro Facades<br>Unit 17, Dunstable Estate<br>Leigh Place, Welling<br>Kent, DA16 3JH |                        | Scale         |
| Tel: 0207 254 4603<br>E-mail: office@dimitrofacades.co.uk |  | DMITRO<br>14.11.14     | 1:50          |
| A2  |  | DB                     | For approval  |
| Date  |  | 24.08.21               | POI           |
| DWG No  |  | GS-DFL-XX-00-DR-X-0804 | Rev           |
| S3  |  | S3                     | P01           |