

## Groupwork

### Technical Note

---

Project        Greville Street

Title            Planning Condition 3D

Ref.             248

Rev.             B

Date             08.06.22

---

## Groupwork

### 1.0 Introduction

---

1.1 The purpose of this technical note is to provide information to accompany the physical on-site sample panel, erected on the west elevation submitted as part of the discharge of condition 3(D) of application 2018/0910 – *“A sample panel of all final facing material shall be erected on-site and approved by the Council before the relevant parts of the work are commenced and the development shall be carried out in accordance with the approval given. The panel must be constructed at 1:1 scale and be no less than 1m<sup>2</sup> in size demonstrate the proposed colour, texture, mesh size, fold and surface joints of the facing material.”*

1.2 The on-site sample panel has been taken from a section of the west elevation to include a window section, flat panels and folded panels as indicated below. The on-site sample panel shows façade fixings, substructure, insulation and breather membrane. It also shows the proposed window manufacturer and finish. This is outlined in *2.0 1m<sup>2</sup> Sample Panel Images*.



Location of sample panel from wider west façade elevation.

1.3 The façade mesh finish has been fabricated in a 1m<sup>2</sup> sample panel to show the proposed colour, texture and mesh size of all façade finishes only. This is outlined in *3.0 1m<sup>2</sup> Sample Panel Mesh Finish*.

## Groupwork

### 2.0 1m2 Sample Panel Images

---

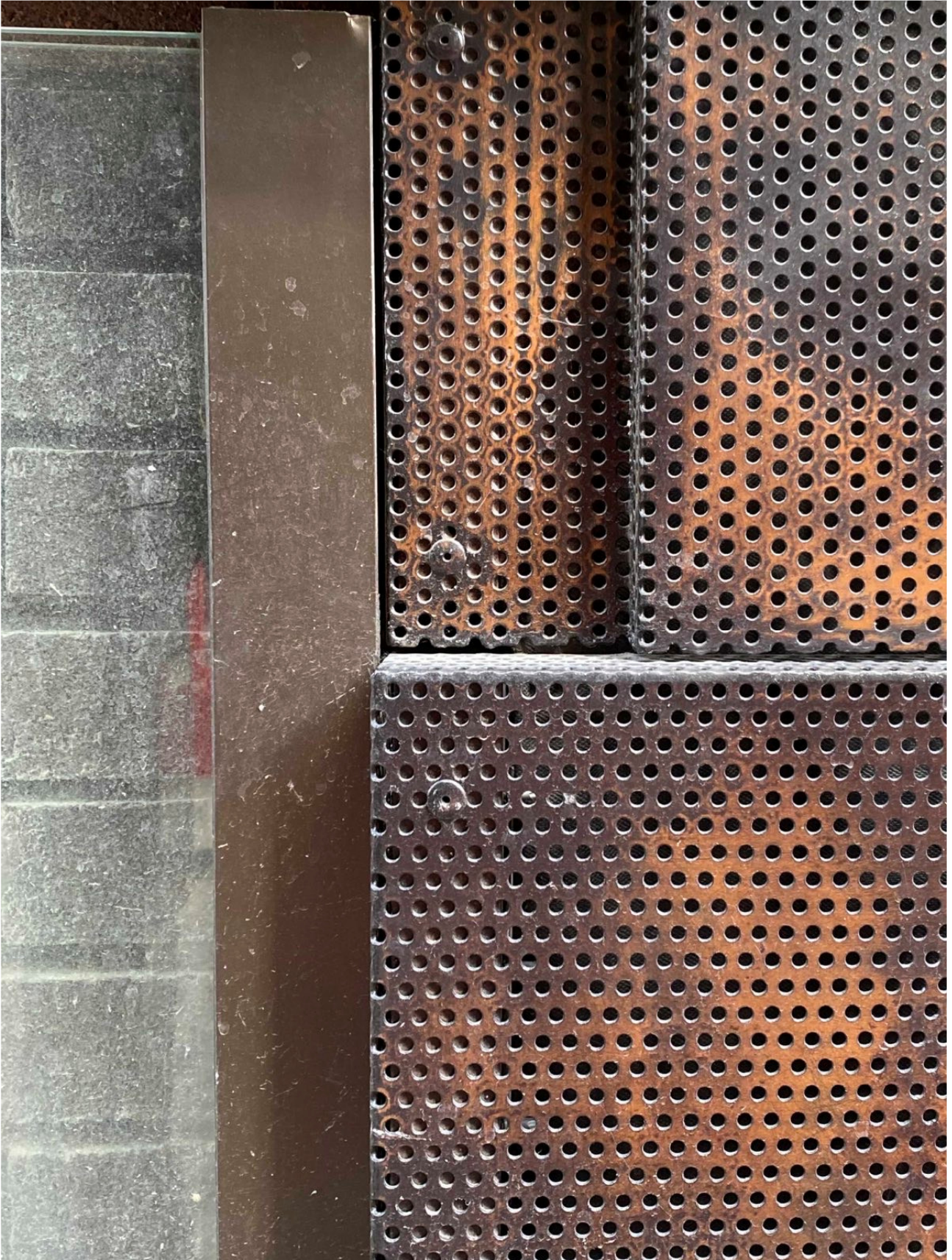
2.1 The following images show an on-site 1m2 façade sample panel with window and window sill section showing typical bending radius, fixings, panelisation, breather membrane, insulation and sub-frame only.



Front elevation



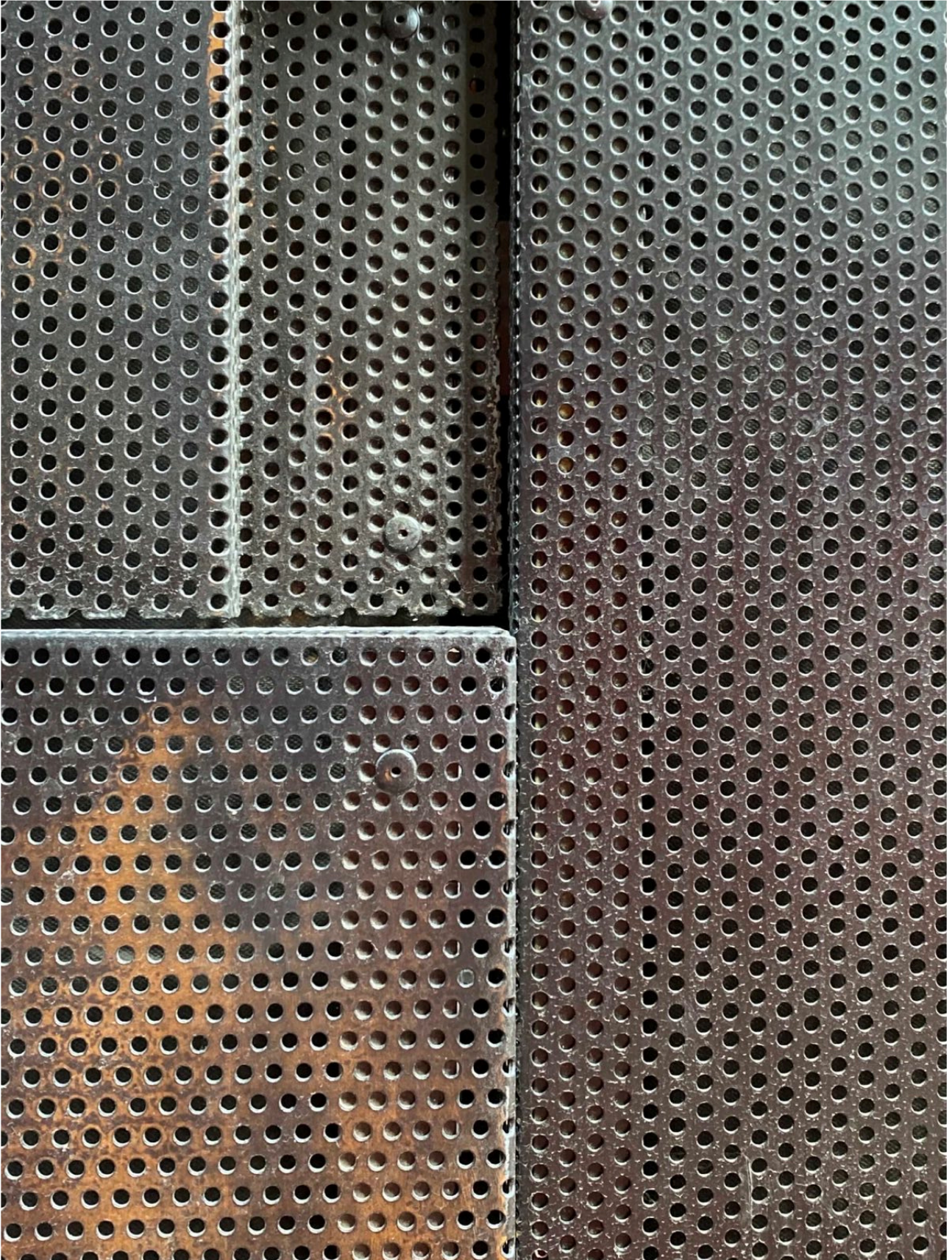
## Groupwork



Fixing detail at façade panel and window



Groupwork



Fixing detail at façade panel



## Groupwork

### 3.0 1m2 Sample Panel Mesh Finish

---

3.1 The following images show a 1m2 façade sample panel to show the proposed colour, texture and mesh size of all façade finishes only.

3.2 Façade panels are finished in a base coat and overpainting layer to achieve a patinated brass effect. The samples below show application of the overpaint at 90% and 95% coverage. The nature of application by hand naturally varies between these figures hence submission of 2no. samples.



90% coverage

Groupwork



95% coverage