

**NOTES**

1. All dimensions in millimetres unless otherwise shown.
2. All levels in metres above Ordnance Datum (mAOD) unless otherwise shown.
3. All dimensions to be checked on site and any discrepancies reported to Employer before pricing / work starts.
4. Any ambiguities or discrepancies within this drawing and any other information given elsewhere must be reported to Camlins and the Employer for clarification before pricing work proceeds.
5. All drawings to be read in conjunction with other Camlins drawings and specification information as appropriate.
6. Refer to relevant Engineer's and Architect's information as appropriate for confirmation of all engineering and architectural details.
7. All works to be carried out in accordance with the latest British Standards and appropriate codes of practice as a minimum.

**KEY**

- Ownership Boundary
- External Bib Taps To Public Realm  
Exact location to be co-ordinated with M&E Engineer and Employer to ensure that all areas of planting are accessible to 20m hose.  
Contractor to allow for the inclusion of the following external bib taps watering points  
For Details Refer To Drg. No. HNCC-CAM-ZZ-ZZ-DR-L-0247-S1-P1
- External Bib Taps To Green Roofs  
Exact location to be co-ordinated with M&E Engineer and Employer to ensure that all areas of planting are accessible to 20m hose.  
Contractor to allow for the inclusion of the following external bib taps watering points  
For Details Refer To Drg. No. HNCC-CAM-ZZ-ZZ-DR-L-0247-S1-P1
- External Bib Taps To Private Residential Properties  
Exact location to be co-ordinated with M&E Engineer and Employer to ensure that all areas of planting are accessible to 20m hose.  
Contractor to allow for the inclusion of the following external bib taps watering points  
For Details Refer To Drg. No. HNCC-CAM-ZZ-ZZ-DR-L-0247-S1-P1
- Planting areas in public realm  
Regular irrigation with hose pipe during first growth season (Apr-Sept). In subsequent years, watering may be required during periods of drought.
- Green roof areas  
Watering required during initial establishment period only. Watering may be required in subsequent years during extended periods of drought.
- Privately owned planting areas  
Regular irrigation with hose pipe during first growth season (Apr-Sept). Irrigation the responsibility of private owner once handed over.
- Proposed Tree Planting Irrigation  
All tree pits to include irrigation/aeration pipe to facilitate manual irrigation and aeration of root zone. Refer to Drg. No. HNCC-CAM-ZZ-ZZ-DR-L-0271-S1-P1

**IRRIGATION SYSTEM**

All trees and areas of planting within made ground to be manually irrigated. No requirement for automatic drip irrigation system.

Once established trees and planting will have access to groundwater.

**BIB TAPS**

A network of bib taps is required to allow both manual irrigation of planting areas and general cleaning operations (e.g. pressure washing of paved surfaces).

Contractor to allow for the inclusion of 2nd. Bib Tap Watering Points within the Courtyard and 1no. Bib Tap within the First Floor Podium (in addition to automatic irrigation systems).

Exact location of external bib taps to be coordinated with M&E Engineer and Employer to ensure that all areas of planting are accessible to 20m hose.

Elsewhere M&E Engineer to confirm appropriate locations and specification for internal bib taps (in stairs, plant rooms and schools).

Possible Supplier: External Bib Taps  
Detech - A-Tap Removable Tap - Chrome Square  
<http://www.arrowvalves.co.uk/shop/hose-union-products/detech-a-tap/detech-a-tap-removable-tap/>  
Arrow Valves Ltd  
York House, Northbridge Road, Berkhamsed HP4 1TA. Tel.: 01442 823 123  
<http://www.arrowvalves.co.uk/media/469494/detech-a-tap.pdf>

**TREE IRRIGATION / AERATION SYSTEM**

In addition to the irrigation system described above all tree pits to include irrigation/aeration pipe to facilitate manual irrigation and aeration of root zone. Refer to tree pit and tree planting detail Drg. No. L1348-200-001.

Tree irrigation/aeration system to be 60mm pvc perforated pipe installed around shoulder of root ball with growing medium. Aeration pipe connected to surface with vertical pipe of same specification and tee sections as required. (This dedicated tree irrigation/aeration system is in addition to any automatic irrigation system).

Possible Supplier: Tree Irrigation/Aeration Systems  
GreenBlue Urban, Haywood Way, Haslemere, East Sussex TN35 4PL  
Tel.: 01424 717 797  
Irrigation pipe to be 'Hoodman Urban' or similar as supplied by GreenBlue Urban.  
<http://greenblueurban.com/product/penetration-urban/>  
Top of vertical pipe to have nominal 100mm Cast Aluminium Grating set flush with finished ground level. C20 mass concrete base to be utilised as required to ensure grating is flush with finished surface levels. Cast Aluminium Grating to be 'Mona Relief Venter' or similar as supplied by Green-Deck.  
Possible Supplier: Cast Aluminium Grating  
Green-Deck Ltd, Sawdell Park, York, YO26 8ET  
Tel.: 01423 332 100  
<http://www.green-deck.co.uk/products/urban-tree-hard-landscaping/tree-and-plant-irrigation/mona-relief-irrigation/mona-relief-venter/>

Rev. Date Description Checked by

Rev.	Date	Description	Checked by
P2	2021-10-28	Public realm planting changed with substation relocation. Private area of planting removed with amenity services added to block C	JW MSS

**Camlins**  
New Zealand House,  
Abbey Foregate,  
Shrewsbury SY2 8FD  
01743 290 779  
www.camlins.com

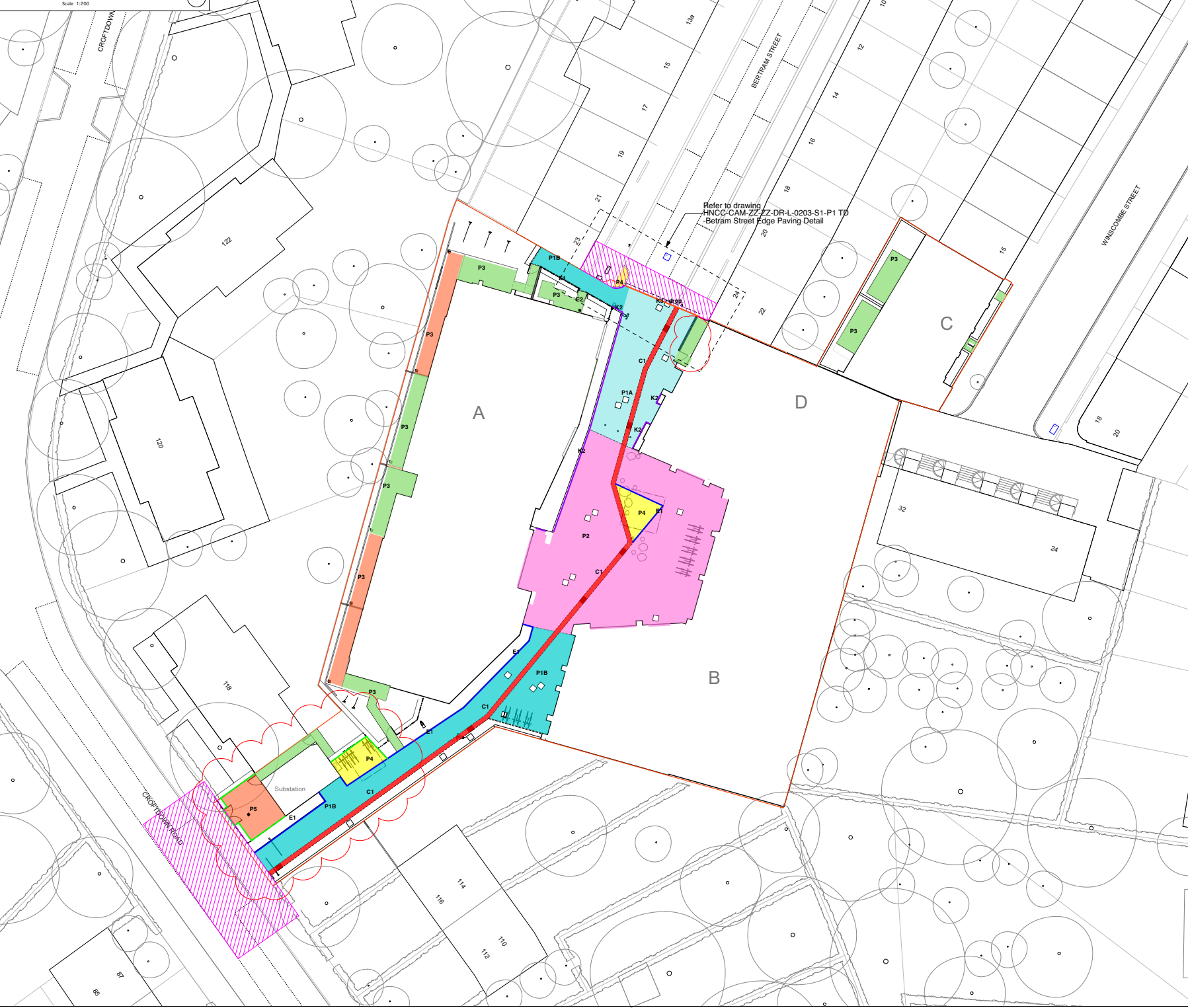
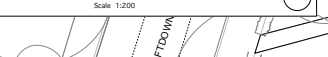
**Born**  
hunters  
Camden  
Harvey  
FARRANS  
simple  
mickap

Highgate Newtown Community Centre  
London Borough of Camden

GA - Irrigation Requirements Plan

Status: Stage 5  
Drawing Number: HNCC-CAM-ZZ-ZZ-DR-L-0082  
Revision: P2  
Scale: 1:200 @ A1  
Date: 07.09.2021

Drawn by: MSS  
Checked by: PSS



**NOTES**

1. All dimensions in millimetres unless otherwise shown.
2. All levels in metres above Ordnance Datum (mAOD) unless otherwise shown.
3. All dimensions to be checked on site and any discrepancies reported to Employer before pricing / work starts.
4. Any ambiguities or discrepancies within this drawing and any other information given elsewhere must be reported to Camlins and the Employer for clarification before pricing work proceeds.
5. All drawings to be read in conjunction with other Camlins drawings and specification information as appropriate.
6. Refer to relevant Engineer's and Architect's information as appropriate for confirmation of all engineering and architectural details.
7. All works to be carried out in accordance with the latest British Standards and appropriate codes of practice as a minimum.

**KEY**

- Ownership Boundary
- P1A Granite Setts Laid on Rigid Construction (Vehicular Traffic) (110 m² total)  
200x150x150mm  
For details refer to Drg. No. HNCC-CAM-ZZ-ZZ-DR-L-0201-S1-P1
- P1B Granite Setts Laid on Flexible Construction (Pedestrian Traffic) (213 m² total)  
200x150x150mm  
For details refer to Drg. No. HNCC-CAM-ZZ-ZZ-DR-L-0201-S1-P1
- P2 Porphyry Sawm Top Pebbles (302m² total)  
Nominally 50mm thick (Minimum 40mm) x 80-100mm diameter Pebbles  
For details refer to Drg. No. HNCC-CAM-ZZ-ZZ-DR-L-0201-S1-P1
- P3 Precast Concrete Flag Paving Laid on Flexible Build up (Pedestrian Use) (125m² total)  
600mmx80mmx900mm  
For details refer to Drg. No. HNCC-CAM-ZZ-ZZ-DR-L-0201-S1-P1
- P4 Resin Bound Aggregate (Laid On Permeable Surface (Pedestrian Use) (30m² total)  
For details refer to Drg. No. HNCC-CAM-ZZ-ZZ-DR-L-0202-S1-P1
- P5 Self Binding Aggregate (or SuperCEDEC gravel) Laid On Permeable Surface (Pedestrian Use) (80m² total)  
For details refer to Drg. No. HNCC-CAM-ZZ-ZZ-DR-L-0202-S1-P1
- C1 Silver Grey Granite Flush Kerb/Channel  
900mmx200mm x random lengths (600-1200mm)  
For details refer to Drg. No. HNCC-CAM-ZZ-ZZ-DR-L-0221-S1-P1
- K1 Silver Grey Granite Flush Kerb  
300mmx200mm random lengths (600-1200mm) laid flush  
For details refer to Drg. No. HNCC-CAM-ZZ-ZZ-DR-L-0211-S1-P1
- K2 Granite Upstand Kerb  
250mmx150mm random lengths (600-1200mm) laid with min 100mm upstand  
For details refer to Drg. No. HNCC-CAM-ZZ-ZZ-DR-L-0211-S1-P1
- K3 - drop Granite Chamfered Drop Kerb  
250mmx150mm random lengths (600-1200mm)  
For details refer to Drg. No. HNCC-CAM-ZZ-ZZ-DR-L-0211-S1-P1
- E1 Granite Edging  
80mmx150mm x random lengths (600-1200mm)  
For details refer to Drg. No. HNCC-CAM-ZZ-ZZ-DR-L-0211-S1-P1
- E2 AluExcel Aluminium Edging or similar approved  
100mm height
- Existing offsite landscape material to be reinstated where affected by works.  
Detailed specification by Engineers and to approval of Highways Authority.

Rev. Date Description

Rev.	Date	Description
P2	2021-10-28	Paving and kerbs updated in line with the substation relocation, paving updated in amenity service added to block C

**Camlins**  
New Zealand House,  
Abbey Foregate,  
Shrewsbury SY2 8FD  
01743 290 779  
www.camlins.com

**Born**  
hunters  
Camden  
Harvey  
FARRANS  
simple  
mickap

Highgate Newtown Community Centre  
London Borough of Camden

GA - Areas of Hard Surface

Status: Stage 5  
Drawing Number: HNCC-CAM-ZZ-ZZ-DR-L-0031  
Revision: P2  
Scale: 1:200 @ A1  
Date: 07.09.2021

Drawn by: IF  
Checked by: PSS