



PLAN  
1:100@A1

Continuation to below

All dimensions to be verified on site. Figured dimensions to take precedent to those scaled. Any areas indicated on this drawing are for guidance only, no responsibility is taken for their accuracy.

The drawing is the property of Applied Landscape Design Limited. Copyright is reserved by them and the drawing is issued on the condition that it is not copied, reproduced, retained or disclosed to any unauthorised person, either wholly or in part, without the written consent in writing of Applied Landscape Design.

© 2021 Applied Landscape Design Limited. All rights reserved.

CDM/H&S:

The works illustrated on this drawing have been reviewed against the Designers CDM Risk Register, document reference xxx, significant risks are noted as:

**Construction:**

- Mechanical lifting of heavy materials onto terraces
- Working adjacent building facades on narrow ledges / terraces
- Loading over cantilevered corners with strict parameters
- On site cutting of fine detail into natural stone pavers

**Maintenance:**

- Working over public realm and below others
- Cultivation over waterproofing layers and buried services
- Risk of working at height in strong winds

**Demolition:**

- As above

NOTES / KEY:

PLAN  
1:100@A1

REFERENCE DRAWINGS/DOCUMENTS	
KXC-S3-001-L-ALD-91-106	L6 GA
KXC-S3-001-L-ALD-91-520 to 522	BESPOKE PLANTERS
KXC-S3-001-L-ALD-91-700	PLANT SCHEDULE
KXC-S3-001-L-ALD-91-850	SPECIFICATION

REVISIONS			

P00	FIRST ISSUE	HKM	KH	31.08.2021
rev.	issue notes			date



LANDSCAPE ARCHITECT:

Falcon House  
Telford Road  
Bicester  
Oxfordshire  
OX26 4LD

Tel: 01869 249776  
Email: mail@appliedlandscape.co.uk

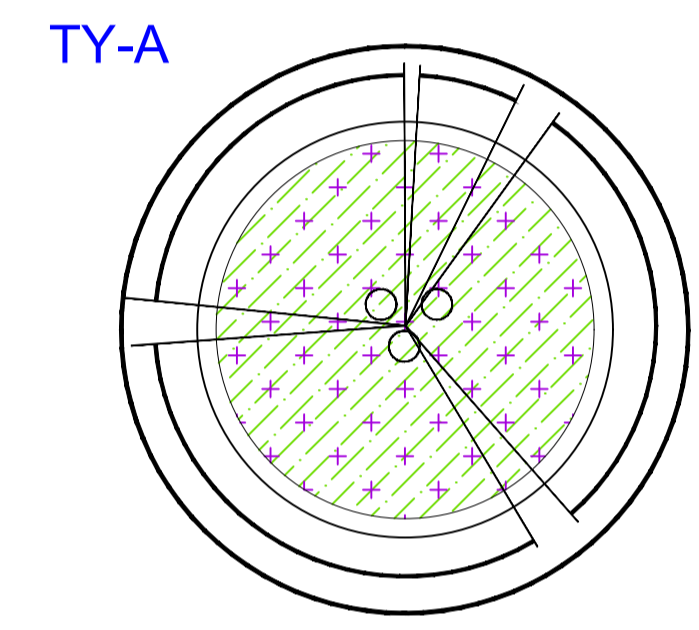
PROJECT:

**S3 TERRACES  
KINGS CROSS CENTRAL**

DRAWING TITLE:

**LEVEL 6 TERRACE  
PLANTING PLAN**

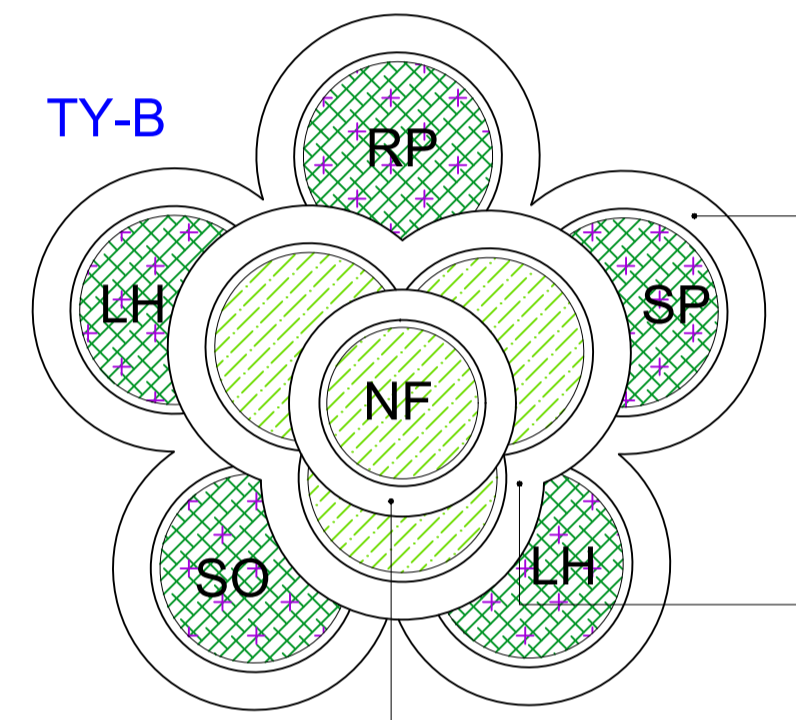
drawn:	scale:
HKM	1:100 @ A1
checked:	status:
KH	INFORMATION
date:	xref file ref:
27.08.2021	ALD878_MPbase
PROJECT NO.	REVISION
KXC-S3-001-L-ALD-91-1061	P00



**TY-A**

**PLANTER TYPE A MIX:**  
L6 Total Number of Type A Planters: 2

PERENNIALS @200c/s  
5no. Ajuga reptans  
5no. Centaurea cyanus  
5no. Hedera helix 'Sagittifolia'  
5no. Sesleria nitida  
BULBS @100c/s  
30no. Narcissus Hawera

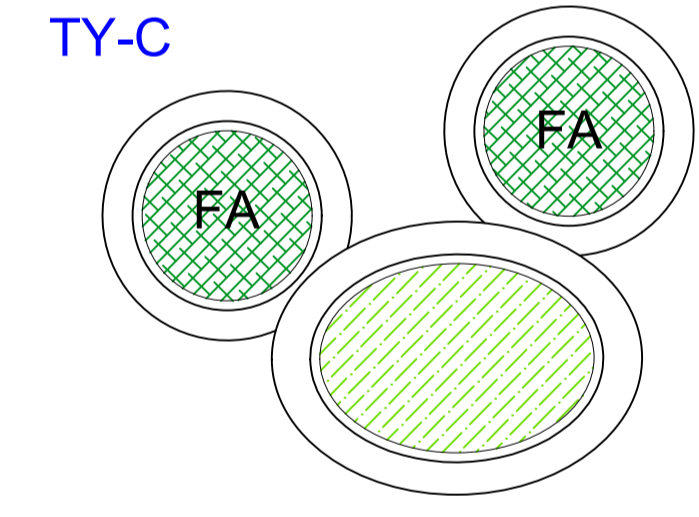


**TY-B**

**PLANTER TYPE B MIX:**  
L6 Total Number of Type B Planters: 3

Bottom Tier  
SPECIMEN SHRUBS  
6no. Lavandula angustifolia 'Hidcote' (LH)  
3no. Rosmarinus officinalis 'Prostratus Group' (RP)  
3no. Salvia officinalis (SO)  
3no. Salvia officinalis 'Purpurascens' (SP)  
BULBS @100c/s  
50no. Allium sphaerocephalon  
(i.e. 10no. in each specimen shrub section)

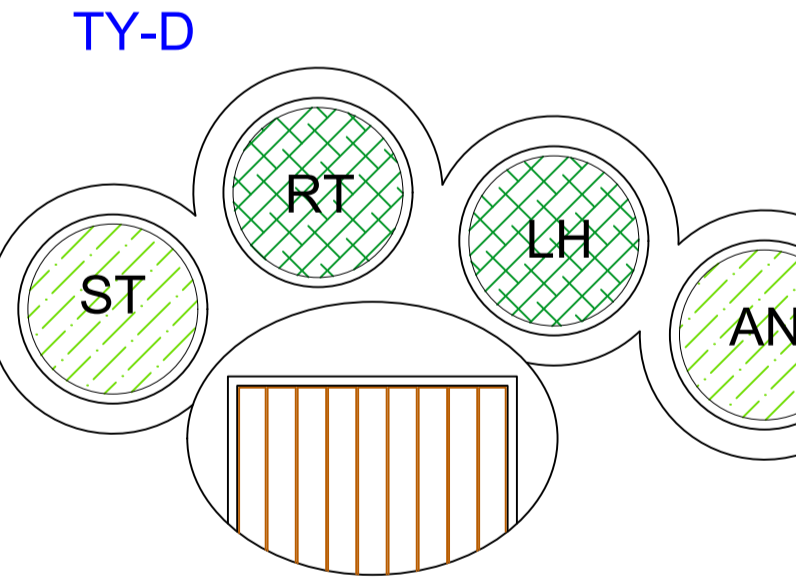
Middle Tier  
PERENNIALS @200c/s  
3no. Campanula rotundifolia  
3no. Centranthus ruber  
3no. Erigeron karvinskianus  
3no. Fragaria vesca  
3no. Deschampsia cespitosa  
3no. Thymus x citriodorus  
3no. Thymus vulgaris



**TY-C**

**PLANTER TYPE C MIX:**  
L6 Total Number of Type C Planters: 3

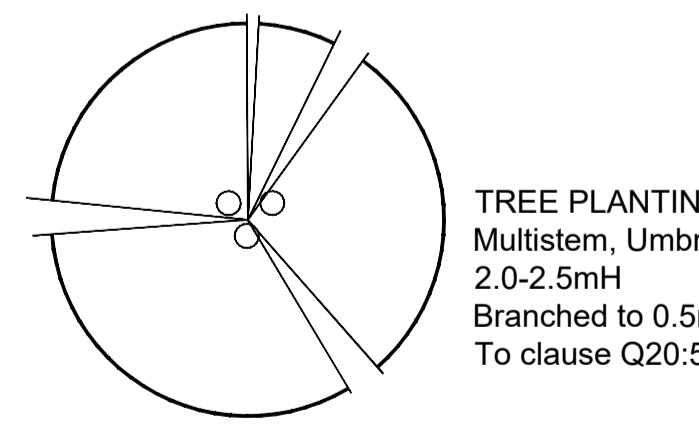
SPECIMEN SHRUBS  
2no. Fargesia rufa (FA)  
PERENNIALS @200c/s  
3no. Hakonechloa macra  
3no. Hedera helix 'Sagittifolia'  
3no. Deschampsia cespitosa  
3no. Libertia chilensis  
3no. Liriope muscari  
3no. Polystichum polyblepharum



**TY-D**

**PLANTER TYPE D MIX:**  
L6 Total Number of Type D Planters: 2

SPECIMEN SHRUBS  
3no. Lavandula angustifolia 'Hidcote' (LH)  
3no. Rosmarinus officinalis 'Tuscan Blue' (RT)  
ORNAMENTAL GRASSES  
1no. Anemanthele lessoniana (AN), 5L  
1no. Stipa tenuissima (ST), 5L  
PERENNIALS @200c/s  
6no. Achillea ptarmica 'The Pearl'  
6no. Hedera helix 'Sagittifolia'  
6no. Oenothera lindheimeri



**TREE PLANTING**  
Multistem, Umbrella Form  
2.0-2.5mH  
Branched to 0.5m, RB stock  
To clause Q20:500.

**SPECIMEN SHRUB PLANTING**  
20L stock, To clause Q31:200.  
To be installed one plant in each planter.

**MIXED PERENNIAL PLANTING**  
2L/5L stock, To clause Q31:200.

**BULB PLANTING**  
To clause Q20:225.

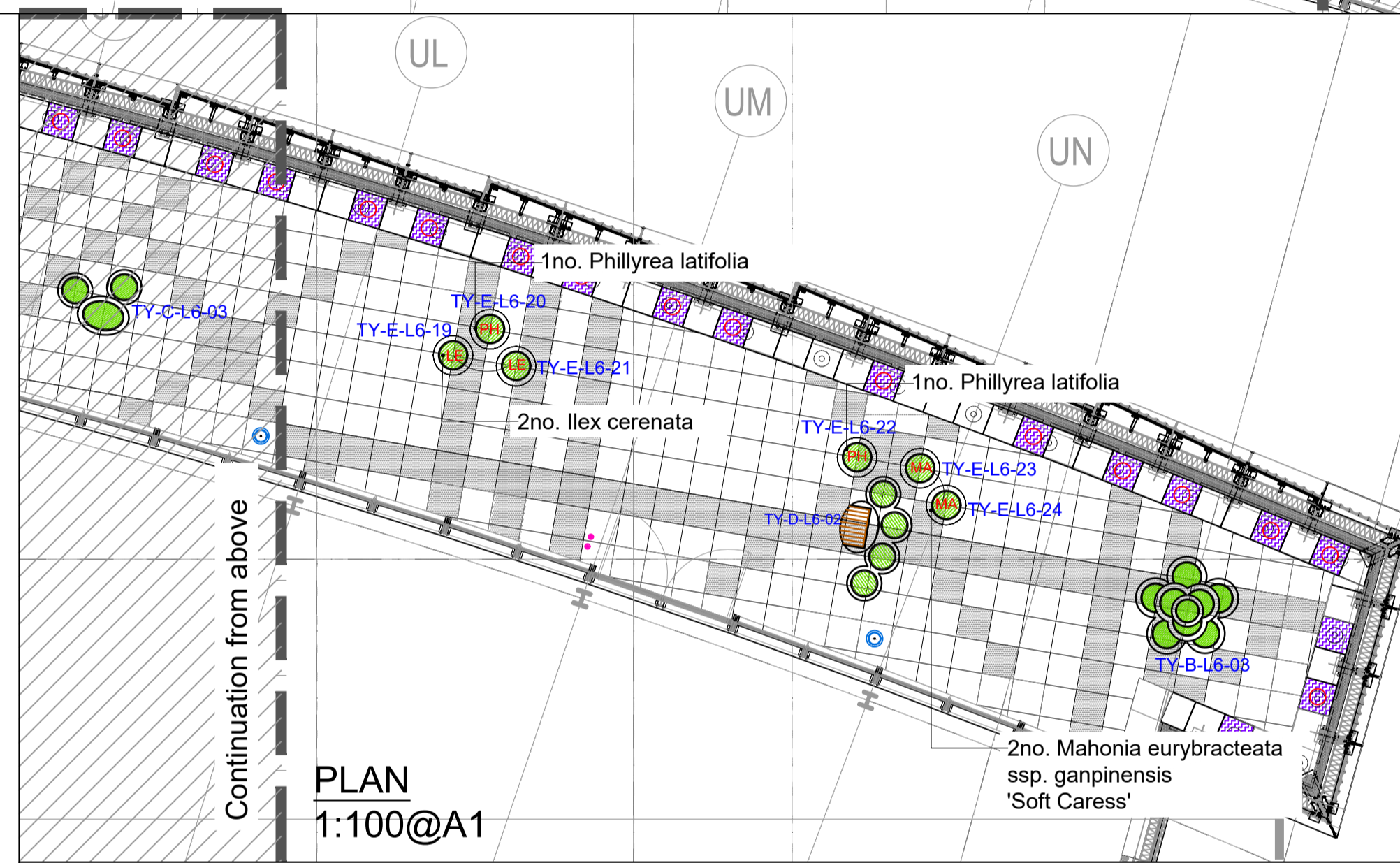
**GENERAL NOTE:**  
PLANTS TO BE INSTALLED IN GROUPS OF 3 & 5.

**PLANTER TYPE E:**  
L6 Total Number of Type E Planters: 24

**SPECIMEN SHRUBS**  
Cornus sanguinea 'Midwinter Fire' (CO)  
Fargesia 'Jiuzhaigou' (FJ)  
Hebe 'Green Globe' (HE)  
Ilex crenata (LE)  
Mahonia eurybracteata ssp. ganpinensis 'Soft Caress' (MA)  
Phillyrea latifolia (PH)

N.B.  
- One plant to be installed in each planter as a specimen.  
- Refer to the planting plan for the plant locations.

PLAN  
1:20@A1



Continuation from above

PLAN  
1:100@A1

**PLANT SCHEDULE**

Botanical Name	Qty.	Height	Spread	Type
<b>MULTISTEM TREES</b>				
Betula pendula	2	2.0-2.5m	1.0-1.5m	Umbrella Form
<b>SPECIMEN SHRUBS</b>				
Botanical Name	Qty.	Height	Pot Size	C/S
Cornus sanguinea 'Midwinter Fire'	4	600-800mm	20L	as shown
Fargesia 'Jiuzhaigou'	4	1000-1250mm	20L	as shown
Hebe 'Green Globe'	4	400-500mm	20L	as shown
Ilex crenata	4	600-800mm	20L	as shown
Mahonia eurybracteata ssp. ganpinensis 'Soft Caress'	4	800-1000mm	20L	as shown
Phillyrea latifolia	4	600-800mm	20L	as shown
<b>SMALL SHRUBS</b>				
Botanical Name	Qty.	Height	Pot Size	C/S
Lavandula angustifolia 'Hidcote'	24	250-300mm	5L	as shown
Rosmarinus officinalis 'Prostratus Group'	9	200-300mm	5L	as shown
Rosmarinus officinalis 'Tuscan Blue'	6	200-300mm	5L	as shown
Salvia officinalis	9	250-300mm	5L	as shown
Salvia officinalis 'Purpurascens'	9	250-300mm	5L	as shown

Botanical Name	Qty.	Pot Size
<b>PERENNIALS @200c/s</b>		
Achillea ptarmica 'The Pearl'	12	2L
Ajuga reptans	10	2L
Anemanthele lessoniana	2	5L
Campanula rotundifolia	9	2L
Centranthus ruber	9	2L
Centraurea cyanus	10	2L
Deschampsia cespitosa	9	2L
Erigeron karvinskianus	9	2L
Fragaria vesca	9	2L
Hakonechloa macra	9	2L
Hedera helix 'Sagittifolia'	46	2L
Libertia chilensis	9	2L
Liriope muscari	9	2L
Nepeta x faassenii	3	5L
Oenothera lindheimeri	12	2L
Polystichum polyblepharum	9	2L
Sesleria nitida	10	2L
Stipa tenuissima	2	5L
Thymus x citriodorus	9	2L
Thymus vulgaris	9	2L