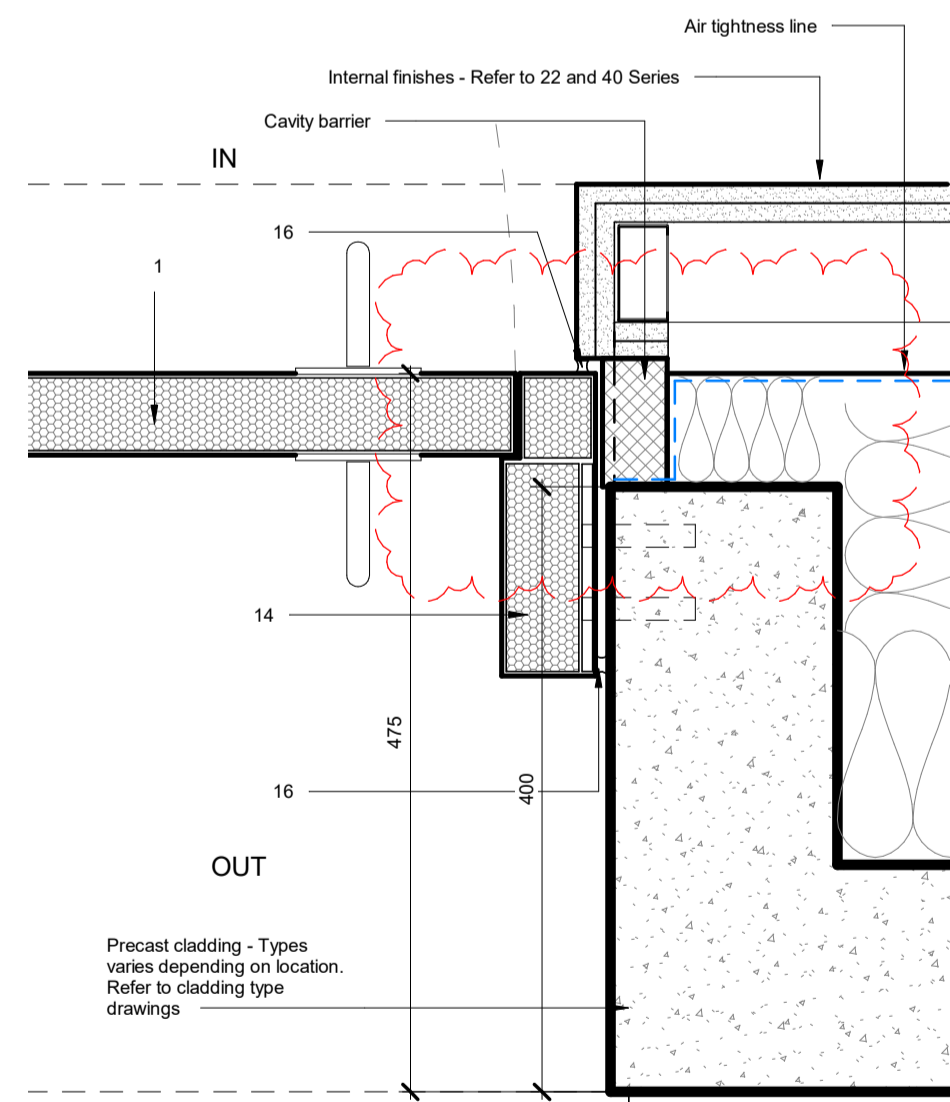
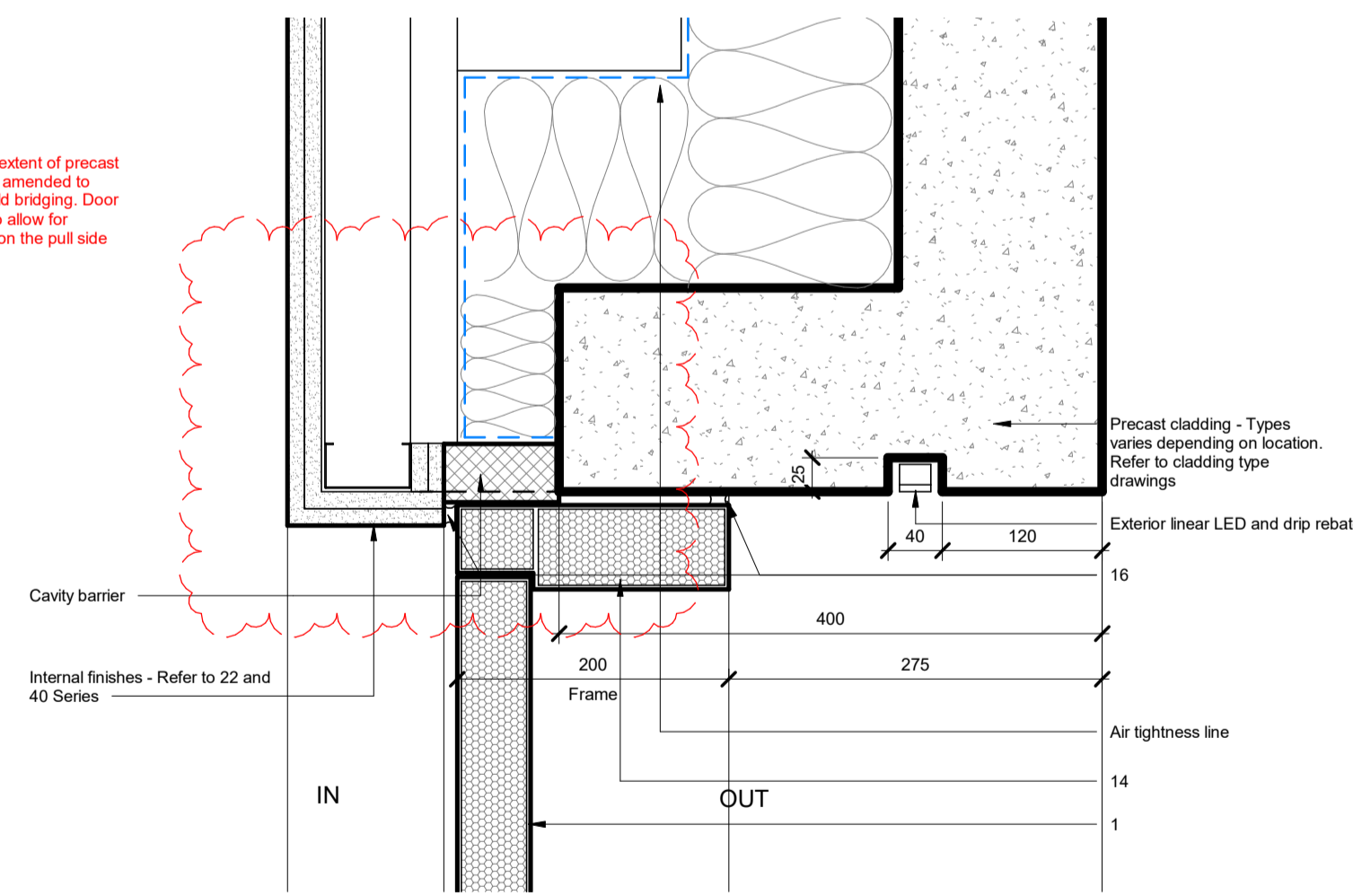


3 ED 12 One Leaf Pull Side Elevation  
1 : 10

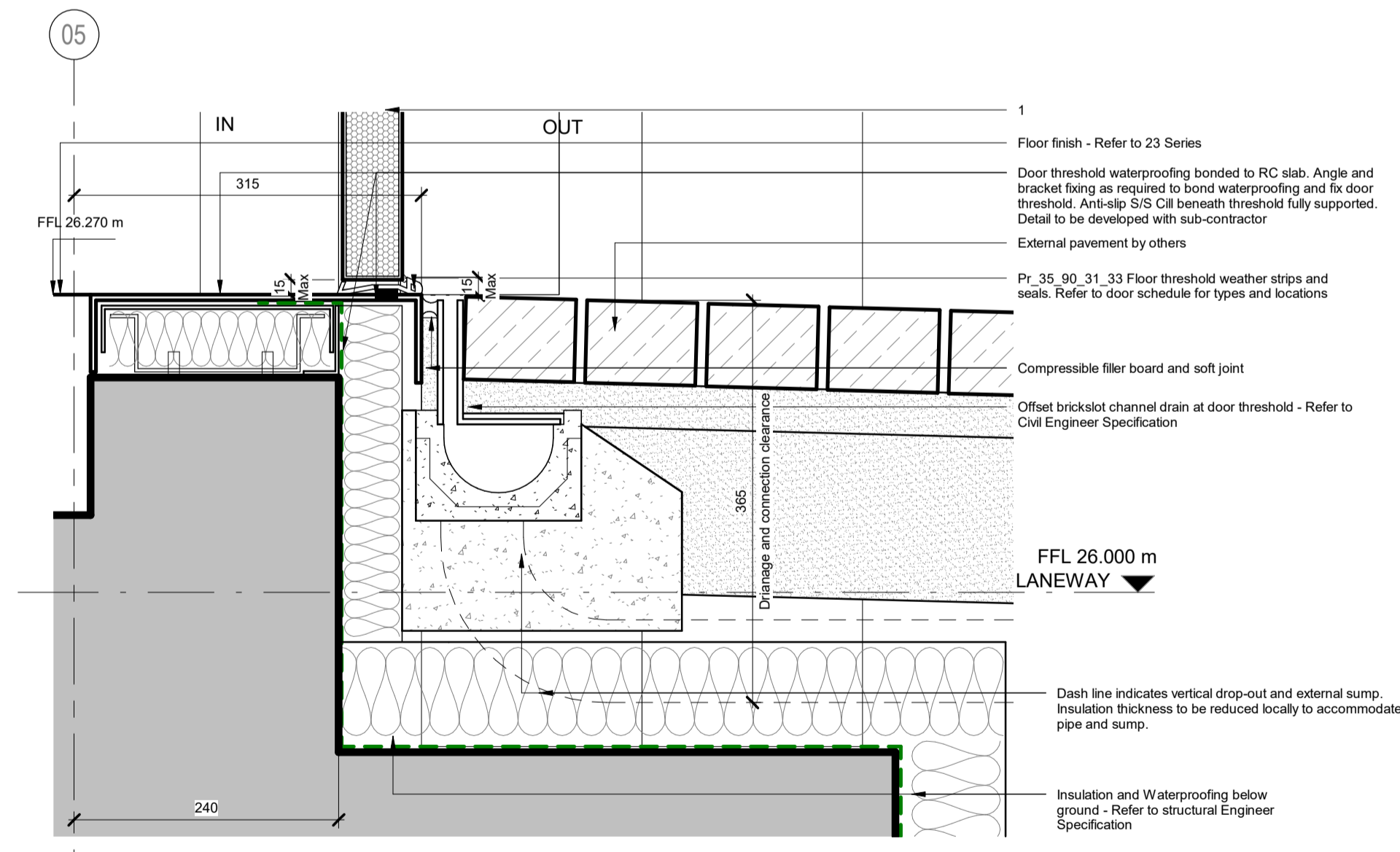
4 ED 12 One Leaf Push Side Elevation  
1 : 10



1 Door Jamb Detail 1 (retail unit 1)  
1 : 5



2 Single Door Head Detail 1 (retail unit 1)  
1 : 5



5 Single Door Base Detail (retail unit 1)  
1 : 5

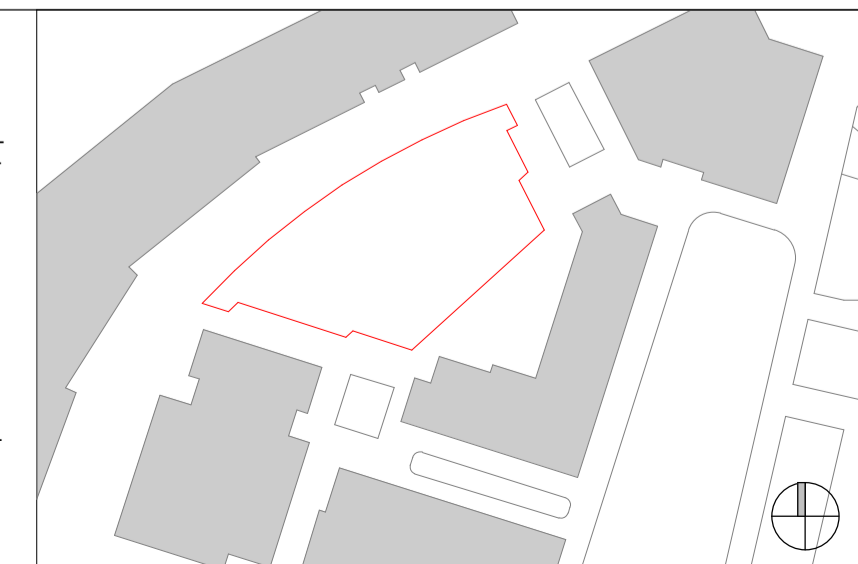
| Rev | Date   | Revision                         | By | Chk |
|-----|--------|----------------------------------|----|-----|
| 01  | 201023 | Issue for Review & Comment       | FM | SL  |
| 02  | 201204 | Issue for Contractor's Proposals | FM | SL  |
| 03  | 210430 | Stage 5 Issue - For Construction | FM | SL  |
| 04  | 211001 | Stage 5 Issue - For Construction | FM | SM  |

**Notes**  
 For Health & Safety related information please refer to the Rolling Designers Risk Register. Where relevant, elements identified on this register are highlighted within the model and on the drawings with the following logo:  
 - DO NOT SCALE FROM DRAWING;  
 - Drawing to be printed in colour;  
 - All information contained in this drawing (including digital data) should be checked and verified prior to any fabrication or construction. Any inconsistencies or omissions should be reported to Bennetts Associates;  
 - Unless otherwise stated, all grids or co-ordinates are based on the Ordnance Survey National Grid via GPS Observations;  
 - Unless otherwise stated, all spot heights and levels are expressed as AOD for "above ordnance datum" based on the Ordnance Survey ODN (Ordnance Datum Newlyn).  
 Bennetts Associates Architects make no warranties, express or implied, with respect to the reuse of the data provided hereafter, regardless of its format or the means of its transmission.  
 All existing survey data is based on, or reference from, 3rd Party information.  
 Unless otherwise stated, all structural, mechanical, electrical information is based on, or reference from, 3rd Party data.  
 © Crown Copyright 2019. All Rights Reserved.  
 Ordnance Survey License 123456

**Key:**

|                               |   |
|-------------------------------|---|
| 01 Door Leaf                  | 16 Intumescent / Acoustic seal                    |
| 02 Vision Panel               | 17 Shadow Gap                                     |
| 03 Lever Handle               | 18 Steel Frame                                    |
| 04 Pull Handle                | 19 Panic Bar (Shallow to limit projection)        |
| 05 Accessible Lever Handle    | 20 Door Stop                                      |
| 06 Grab Rail                  | 21 Delay Action and Hold Open Closer (Concealed)  |
| 07 Eschutcheon & Mortice Lock | 22 Delay Action and Hold Open Closer (Face fixed) |
| 08 Thumb Turn                 | 23 Delay Action Closer (Concealed)                |
| 09 Indicator                  | 24 Delay Action Closer (Face fixed)               |
| 10 Euro-Cylinder Lock         | 25 Floor-Mounted Magnetic Catch                   |
| 11 Push Plate                 | 26 Floor Spring                                   |
| 12 Kick Plate                 | 27 Butt Hinge                                     |
| 13 Signage                    | 28 Concealed Hinges                               |
| 14 Door Frame                 | 29 Trolley Plate                                  |
| 15 Glazing Bead               | 30 Flush Bolt                                     |

To be read in conjunction with specification KXC-S3-001-A-2011-20-850, door Schedule KXC-S3-001-A-2011-21-700.  
 Ironmongery shown indicatively to be developed with Specialist Sub-contractor.  
 Refer to 3V Ironmongery schedule.  
 For security information refer to Specialist Designer information and External Door Schedule.  
 Refer to (22), (40) and (35) Series for internal walls, finishes, and ceilings information respectively.  
 All details are shown indicatively to describe design intent. Final details to be developed with specialist contractor.  
 Structural Engineer Model shown in red



**BENNETTS ASSOCIATES**  
 1 Rawstone Place, London EC1V 7NL  
 T +44(0)207 5203300 • www.bennettsassociates.com  
 E mail@bennettsassociates.com  
 For Bennetts Associates' electronic information issue disclaimer - www.bennettsassociates.com/informationanddisclaimer/

Project  
**Kings Cross S3**  
 Kings Cross Central Partnership Ltd

Drawing Title  
**External Metal Doors**  
**Door Type ED 12**  
 Details

Drawing Number  
**KXC-S3-001-A- 2011-21-551**

Scale @ A3  
 Scale @ A1  
 As indicated

Project No. 2011  
 Suitability / Revision  
**A / 04**  
 Revision Date  
 211001  
 YY MM DD