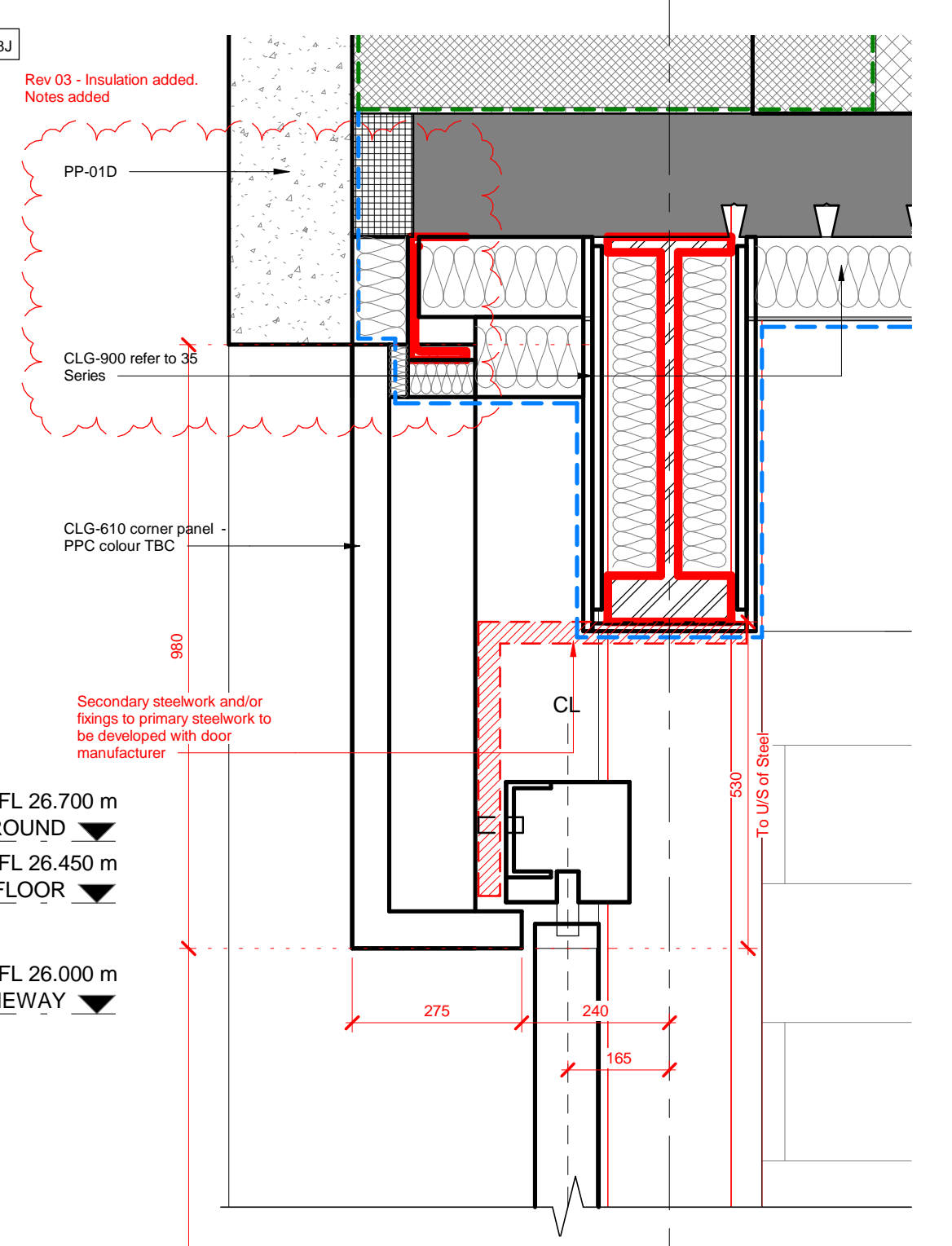
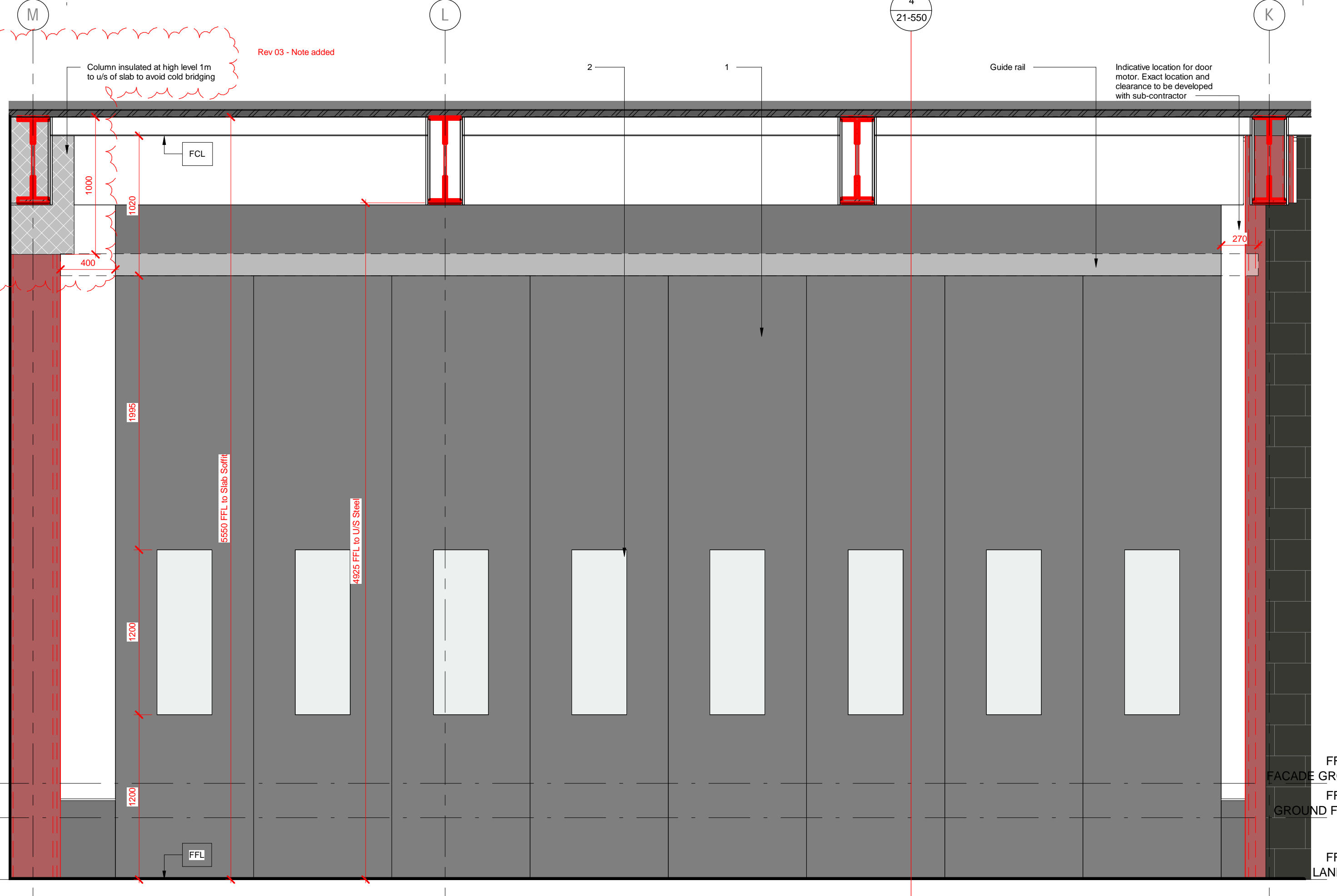


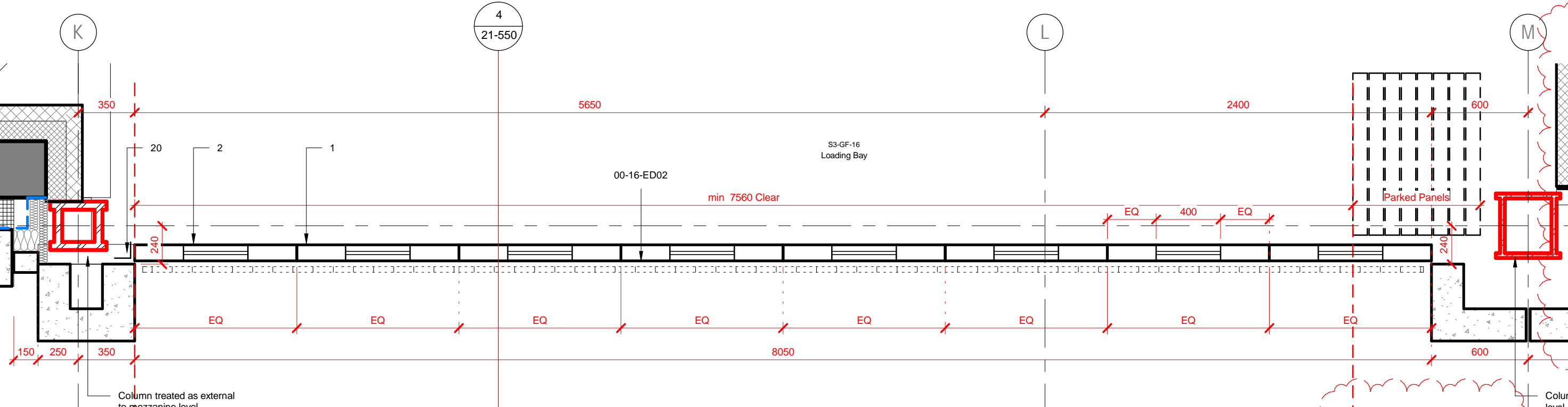
3 ED 10 - Outside Elevation  
1 : 25



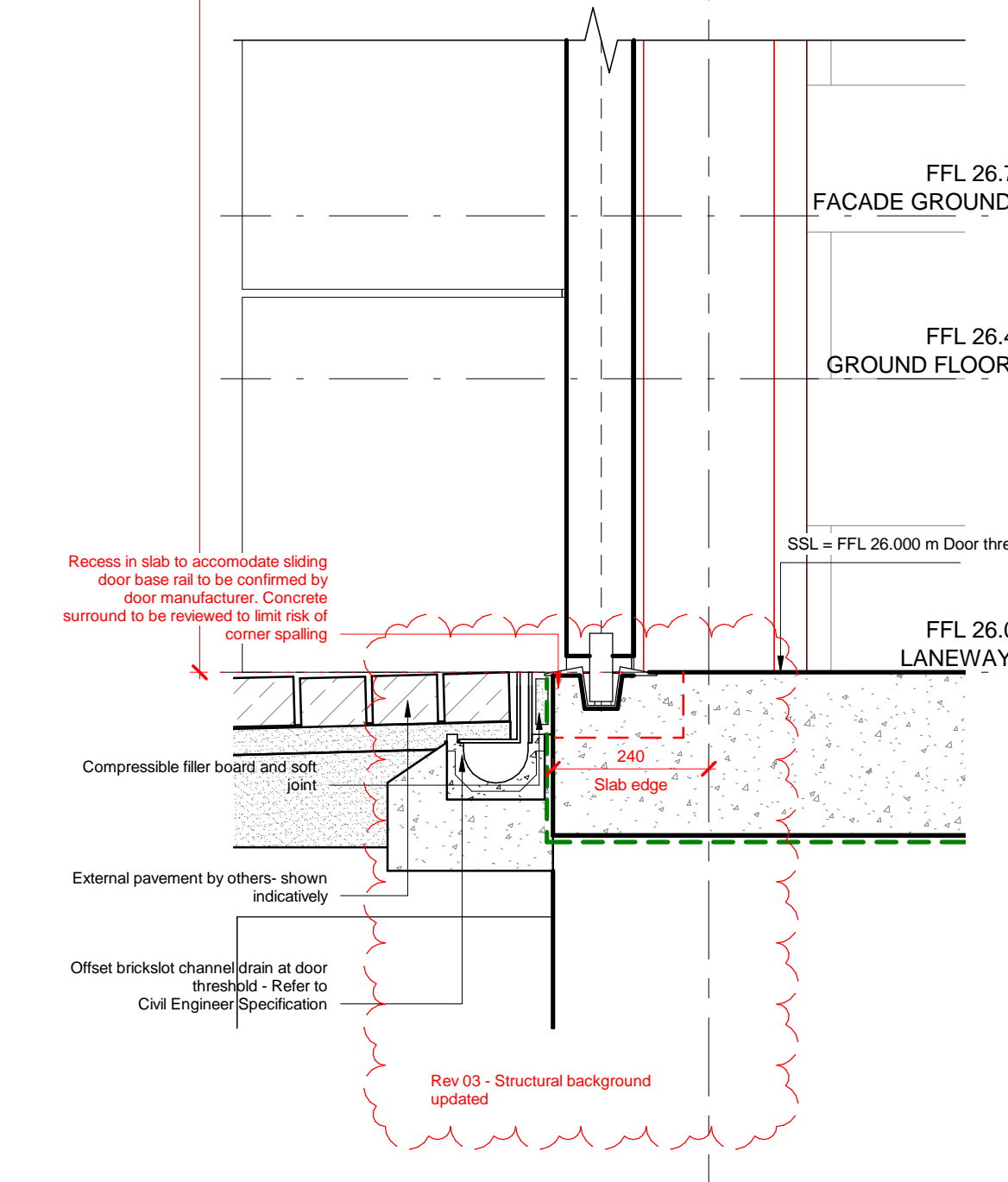
4 Section  
1 : 10



2 ED 10 - Inside Elevation  
1 : 25



1 ED 10 - Plan  
1 : 25



- Key:**
- 01 Door Leaf
  - 02 Vision Panel
  - 03 Lever Handle
  - 04 Pull Handle
  - 05 Accessible Lever Handle
  - 06 Grab Rail
  - 07 Eschutcheon & Mortice Lock
  - 08 Thumb Turn
  - 09 Indicator
  - 10 Euro-Cylinder Lock
  - 11 Push Plate
  - 12 Kick Plate
  - 13 Signage
  - 14 Door Frame
  - 15 Glazing Bead
  - 16 Intumescent / Acoustic seal
  - 17 Shadow Gap
  - 18 Steel Frame
  - 19 Panic Bar (Shallow to limit projection)
  - 20 Door Stop
  - 21 Delay Action and Hold Open Closer (Concealed)
  - 22 Delay Action and Hold Open Closer (Face fixed)
  - 23 Delay Action Closer (Concealed)
  - 24 Delay Action Closer (Face fixed)
  - 25 Floor-Mounted Magnetic Catch
  - 26 Floor Spring
  - 27 Butt Hinge
  - 28 Packer
  - 29 Trolley Plate
  - 30 Flush Bolt
- To be read in conjunction with specification KXC-S3-001-A-2011-20-850, door Schedule KXC-S3-001-A-2011-21-700. Ironmongery shown indicatively to be developed with Specialist Sub-contractor.
- Refer to 3V Ironmongery schedule.
- For security information refer to Specialist Designer information and External Door Schedule.
- Refer to (22), (40) and (35) Series for internal walls, finishes, and ceiling information respectively.
- All details are shown indicatively to describe design intent. Final details to be developed with specialist contractor.
- Structural Engineer Model shown in red

Rev	Date	Revision	By	Chk	Notes
01	201023	Issue for Review & Comment	FM	SL	
02	201204	Issue for Contractor's Proposals	FM	SL	
03	210430	Stage 5 Issue - For Construction	FM	SL	

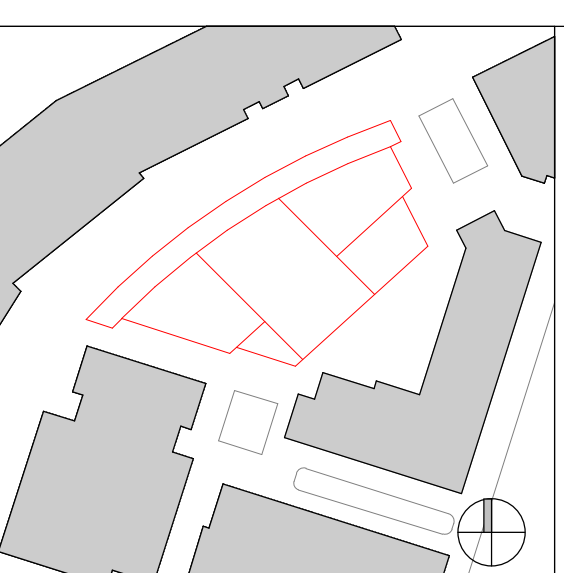
**Notes**

- For Health & Safety related information please refer to the Rolling Designers Risk Register. Where relevant, elements identified on this register are highlighted within the model and on the drawings with the following logo.
- DO NOT SCALE FROM DRAWING.
- Drawing to be printed in colour.
- All information contained in this drawing (including digital data) should be checked and verified prior to any fabrication or construction. Any inconsistencies or omissions should be reported to Bennetts Associates.
- Unless otherwise stated, all grids or co-ordinates are based on the Ordnance Survey National Grid via GPS Observations.
- Unless otherwise stated, all spot heights and levels are expressed as AOD for 'above Ordnance datum' based on the Ordnance Survey ODN (Ordnance Datum Newlyn).

Bennetts Associates Architects make no warranties, express or implied, with respect to the reuse of the data provided herewith, regardless of its format or the means of its transmission.

All existing survey data is based on, or reference from, 3rd Party information. Unless otherwise stated, all structural, mechanical, electrical information is based on, or reference from, 3rd Party data.

© Crown Copyright 2019. All Rights Reserved.  
Ordnance Survey License 123456



**BENNETTS ASSOCIATES**

1 Rawstorne Place, London EC1V 7NL  
T +44(0)207 5203300  
www.bennettsassociates.com

For Bennetts Associates' electronic information issue disclaimer -

Project  
**Kings Cross S3**  
Kings Cross Central Partnership Ltd

Drawing Title  
**External Metal Doors**  
Loading Bay door ED 10  
Details

Project No. 2011

Drawing Number  
**KXC-S3-001-A- 2011-21-550**

Suitability / Revision  
**A / 03**

Scale @ A3  
As indicated

Scale @ A1  
As indicated

Revision Date  
210430

YY MM DD