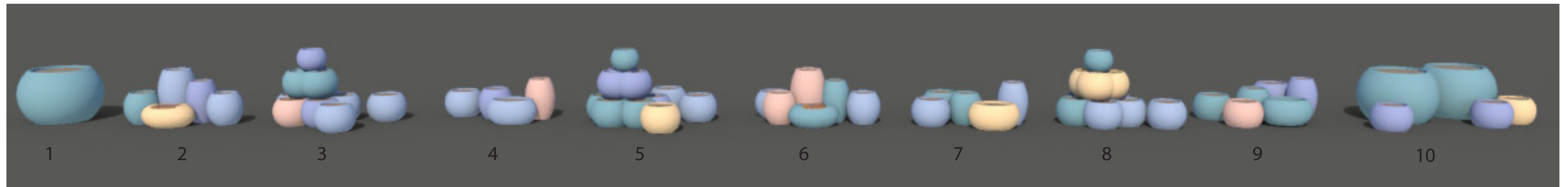




Kings Cross Building S3
ROOF TERRACE PLANTER PROPOSAL
19 November 2021
Todd Longstaffe-Gowan Ltd



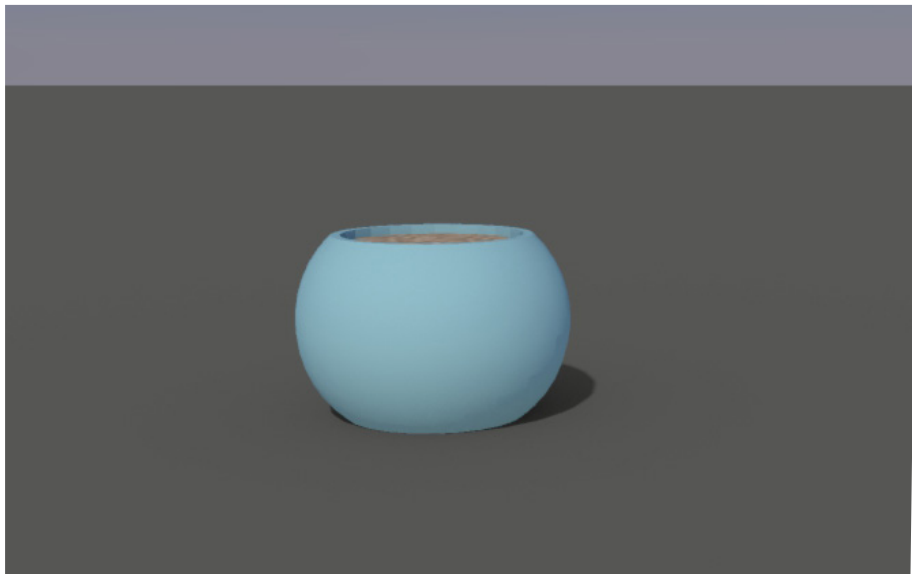
Sixth Floor Terrace Planter Configuration

NOTES

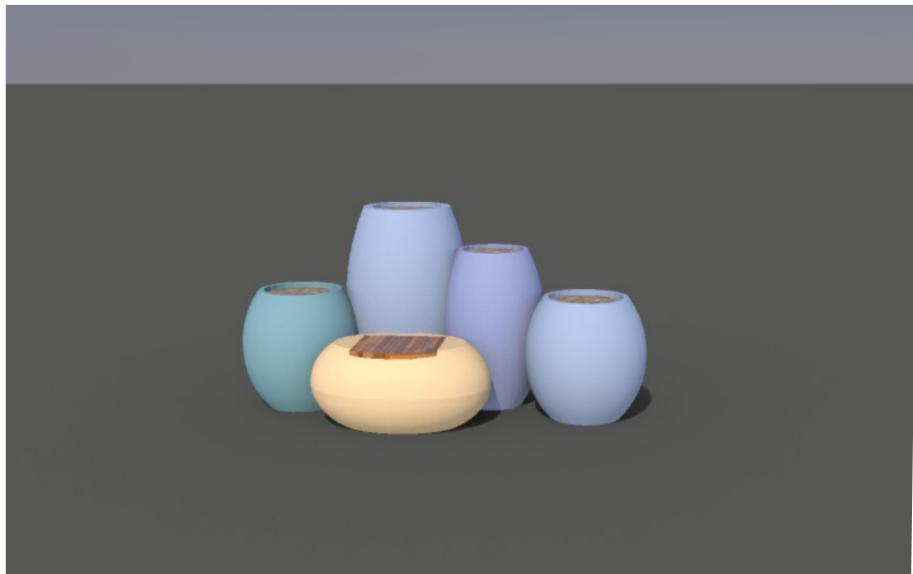
The colour palette is based on an edited version of the accent wall colours occurring within the building. Due to the sheer number of individual planters on each level, a multi hued scheme was selected over a monochromatic option, to create interest and diversity in the landscape.

This scheme provides year round interest, highlighting the profusion of foliage in the growing seasons and adding vibrancy in the darker winter months.

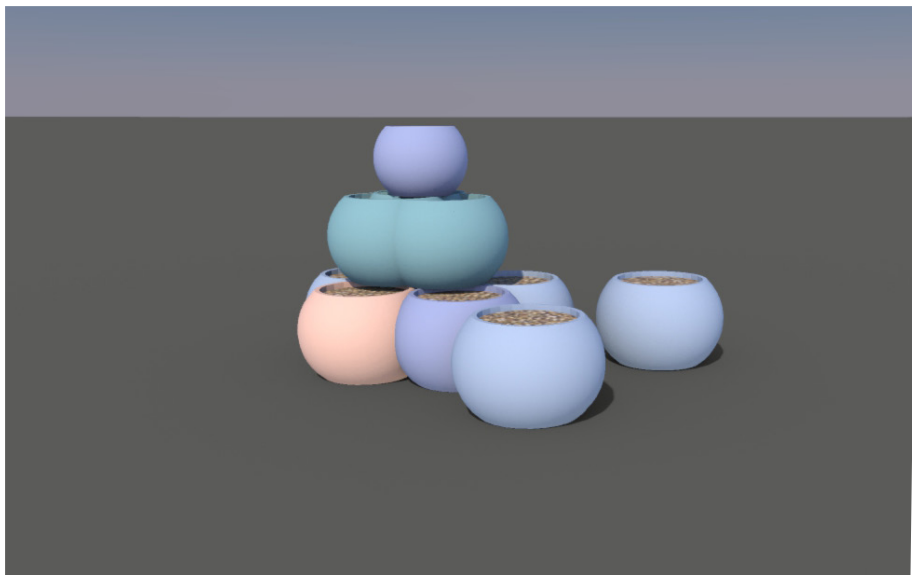
Please note, the colours represented in this presentation may differ slightly from the NCS colours listed below .



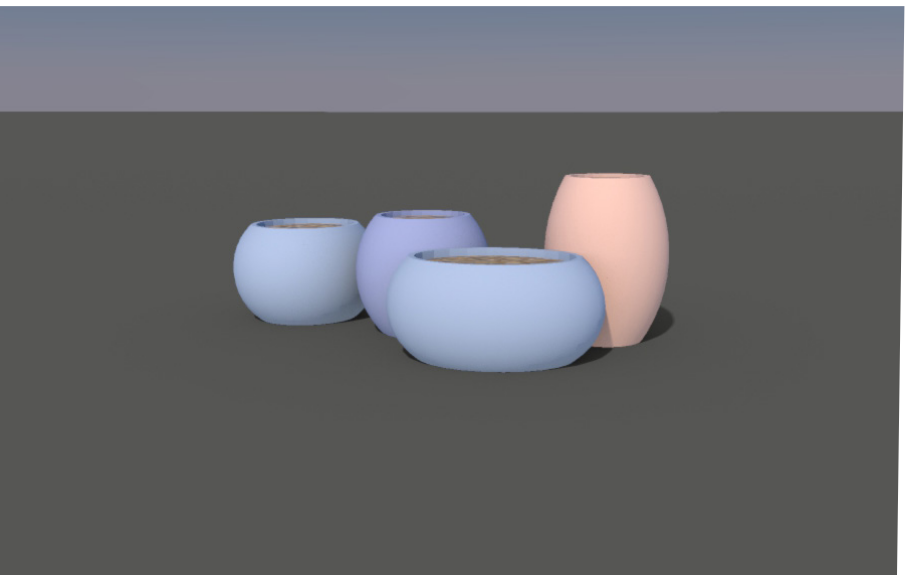
Group 1



Group 2



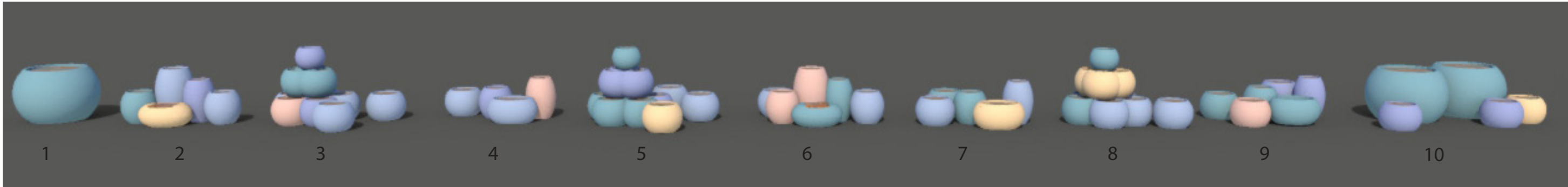
Group 3



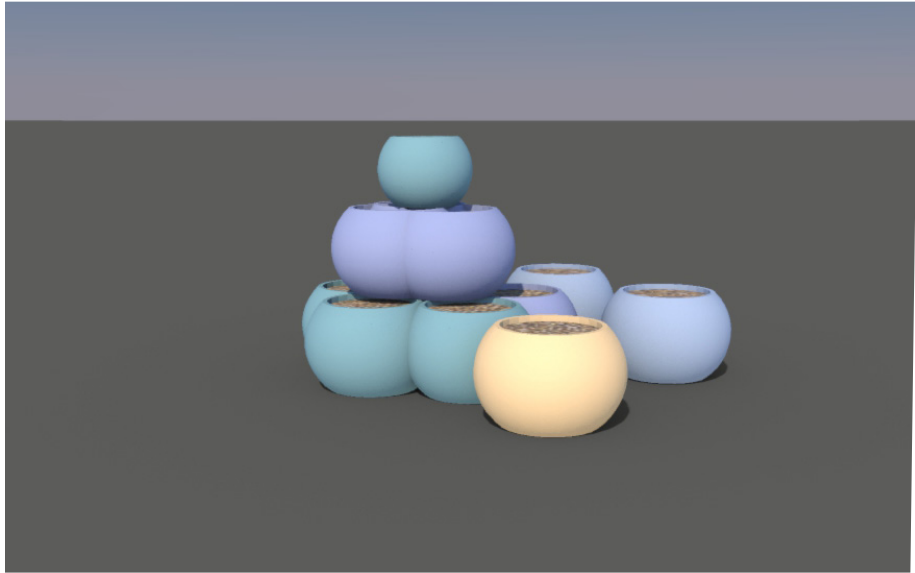
Group 4

NCS Colour References

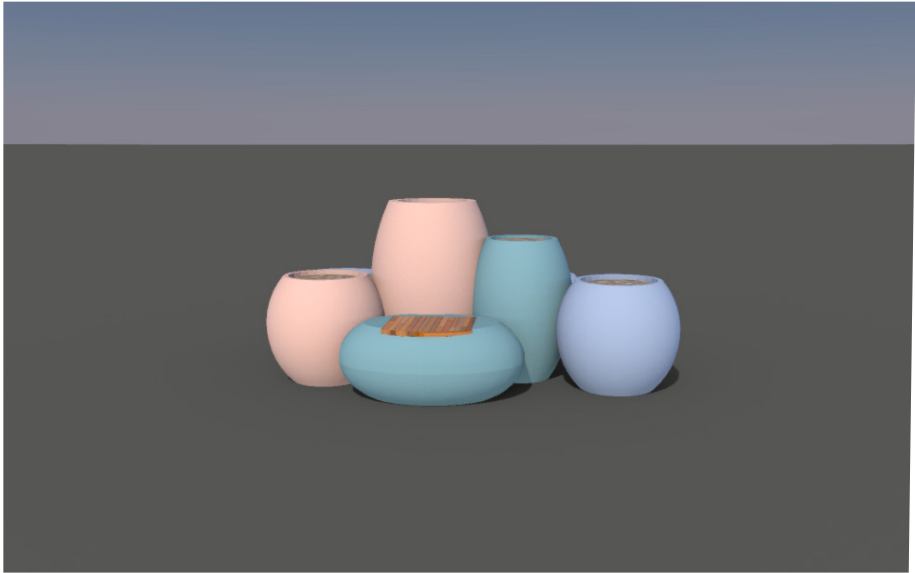




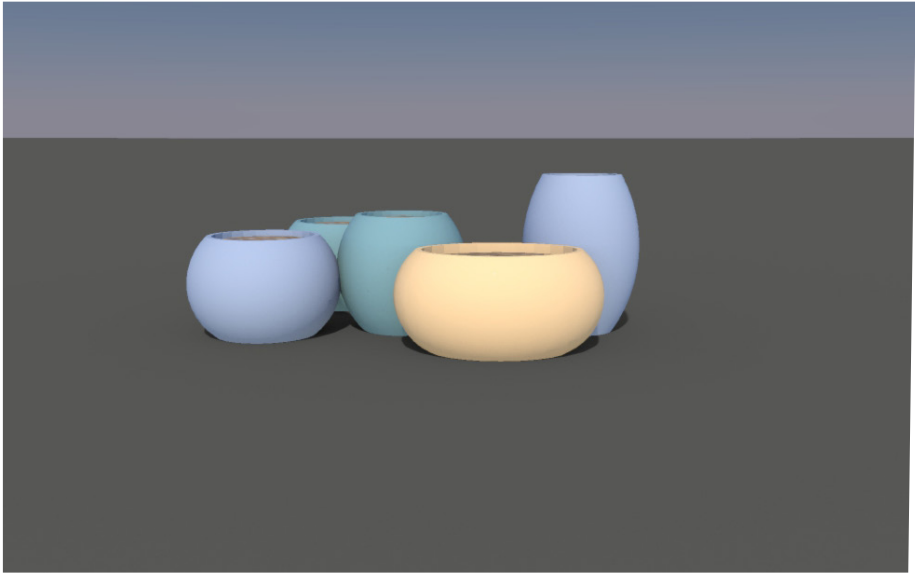
Sixth Floor Terrace Planter Configuration



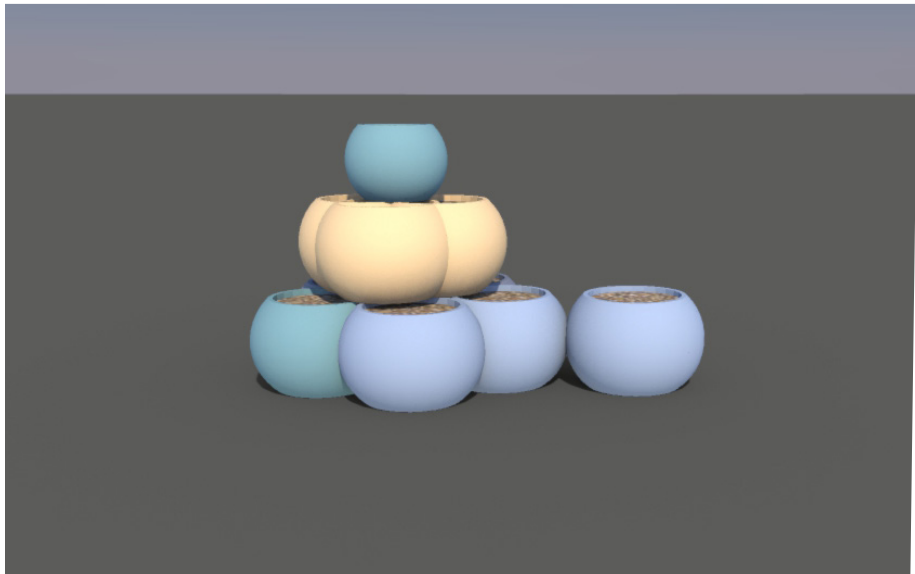
Group 5



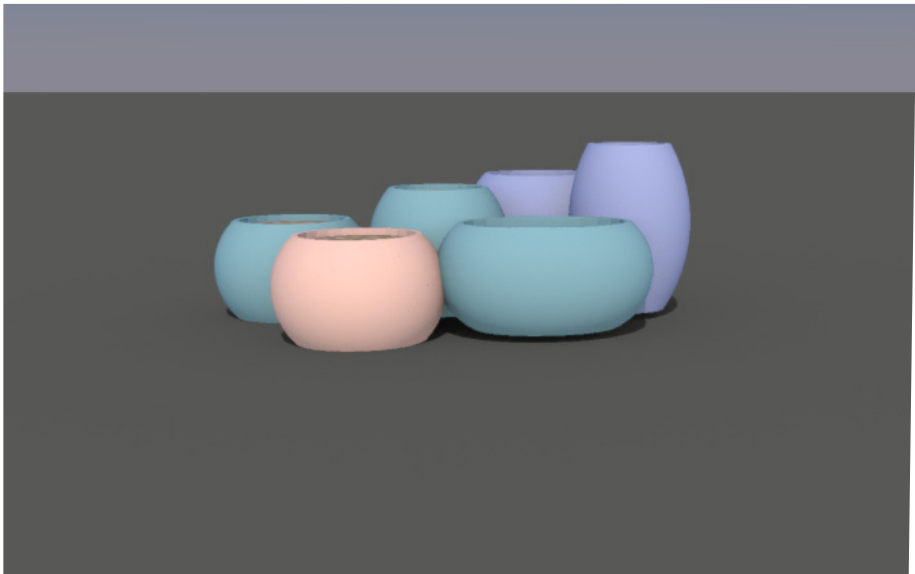
Group 6



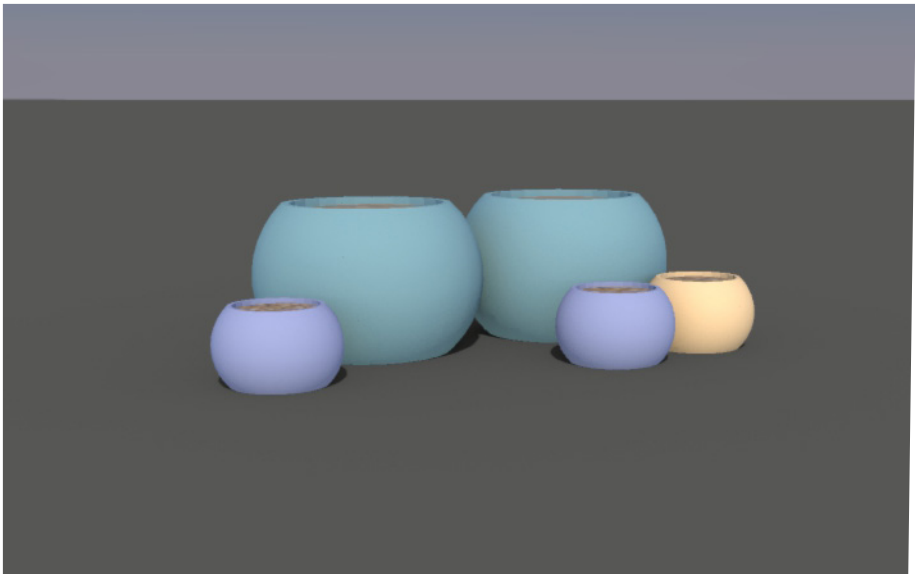
Group 7



Group 8



Group 9



Group 10

NCS Colour References

