

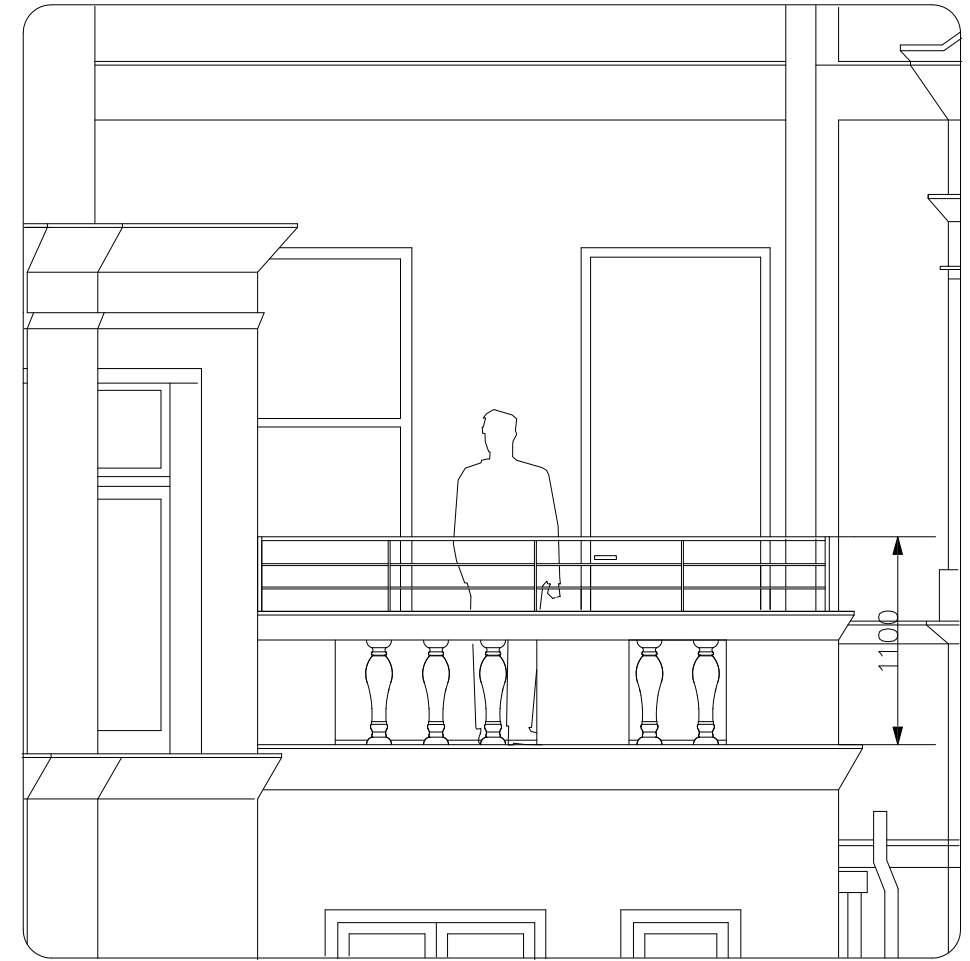
**1** Section Detail- Balcony  
1:50 @ A3



Balcony as existing



Balcony as existing



**2** Balcony and proposed door elevation  
1:40 @ A3

Technical Specifications		
Thermal	As Standard	Best
U-Value	1.6	1.6
g-Value	52%	As Required
LT	72%	As Required
Weather		
Standard	BS6375 Part 1	
Air	Class 4 (EN 12207:2000)	
Wind	Class C5 (EN 12210:2000)	
Water	Class E750 (EN 12208:2000)	
Operation & Strength		
Classification	Pass (BS6375 Part 2)	
Sustainability		
FSC Chain of Custody	Yes	
Security		
PAS 24 / Part Q	No	

Proposed Door Technical Specification

**General notes:**  
This drawing is copyright of KSR architects. This drawing must be read in conjunction with the Designer's Risk Assessment, specification and all other relevant documentation and drawings. KSR architects accept no liability for any expense, loss or damage of whatsoever nature and however arising from any variation made to this drawing or in the execution of the work to which it relates which has not been referred to them and their approval obtained.  
Do not scale from this drawing or the digital data, only figured dimensions are to be used. For Planning refer to linear scale.  
Check all dimensions on site prior to carrying out any works – advise any discrepancy

A	Planning Application- Revised Balustrade	15.08.22	SA	DC
-	Planning Application	27.05.22	SA	DC
Rev	Notes	05.09.22	By	Chd

© KSR architects

**KSR ARCHITECTS & INTERIOR DESIGNERS**  
KSR Architects LLP  
14 Gower Street, London WC1E 6BT  
t: +44 (0)20 7982 5000  
www.ksrarchitects.com

Project:  
58 Eton Ave

Title:  
Proposed Section & Elevation Callouts

Date: Drawn By: Checked:

Scale: As Drawing @A3

Project Ref: 21033	Drawing No: 21033-P-11	Revision: A
-----------------------	---------------------------	----------------