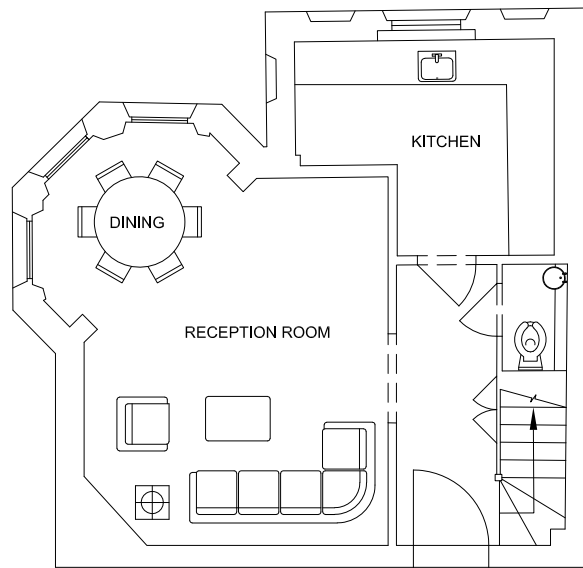


FIRST FLOOR



GROUND FLOOR



SIDE ELEVATION

1

General notes:
 This drawing is copyright of KSR architects. This drawing must be read in conjunction with the Designer's Risk Assessment, specification and all other relevant documentation and drawings. KSR architects accept no liability for any expense, loss or damage of whatsoever nature and however arising from any variation made to this drawing or in the execution of the work to which it relates which has not been referred to them and their approval obtained.
 Do not scale from this drawing or the digital data, only figured dimensions are to be used. For Planning refer to linear scale.
 Check all dimensions on site prior to carrying out any works - advice any discrepancy

A	Planning Application - Revised Balustrade	15.06.22	SA	DC
-	Planning Application	27.05.22	SA	DC
Rev	Notes	05.09.22	By	CHK

© KSR architects



KSR ARCHITECTS & INTERIOR DESIGNERS
 KSR Architects LLP mail@ksrarchitects.com
 14 Grosvenor Street, London W1A 2AA
 London W1A 2AA t: +44 (0)20 7492 5000
www.ksrarchitects.com

Project:
 58 Eton Ave

Title:
 Proposed Plans & Elevation

Date:	Drawn By:	Checked:
Scale: 1:100 @ A3	Project Ref: 21033	Drawing No: 21033-P-10
	Revision: A	