

reinstatement of the 'saltaire' detail between London stock brick piers bond identical to original examples adjacent to the house, verified using archive photographs of the house

grouping of seven 'saltaire' elements as per original archive photographs

'saltaire' elements are originally pre-cast concrete with steel reinforcement bars - a formwork will be taken from existing examples to cast the new 'saltaire' blocks

the moulding above and the band below the 'saltaire's to use Roman cement run in-situ using traditional timber guides with the profile cut to match the original coping still extant on the return wall

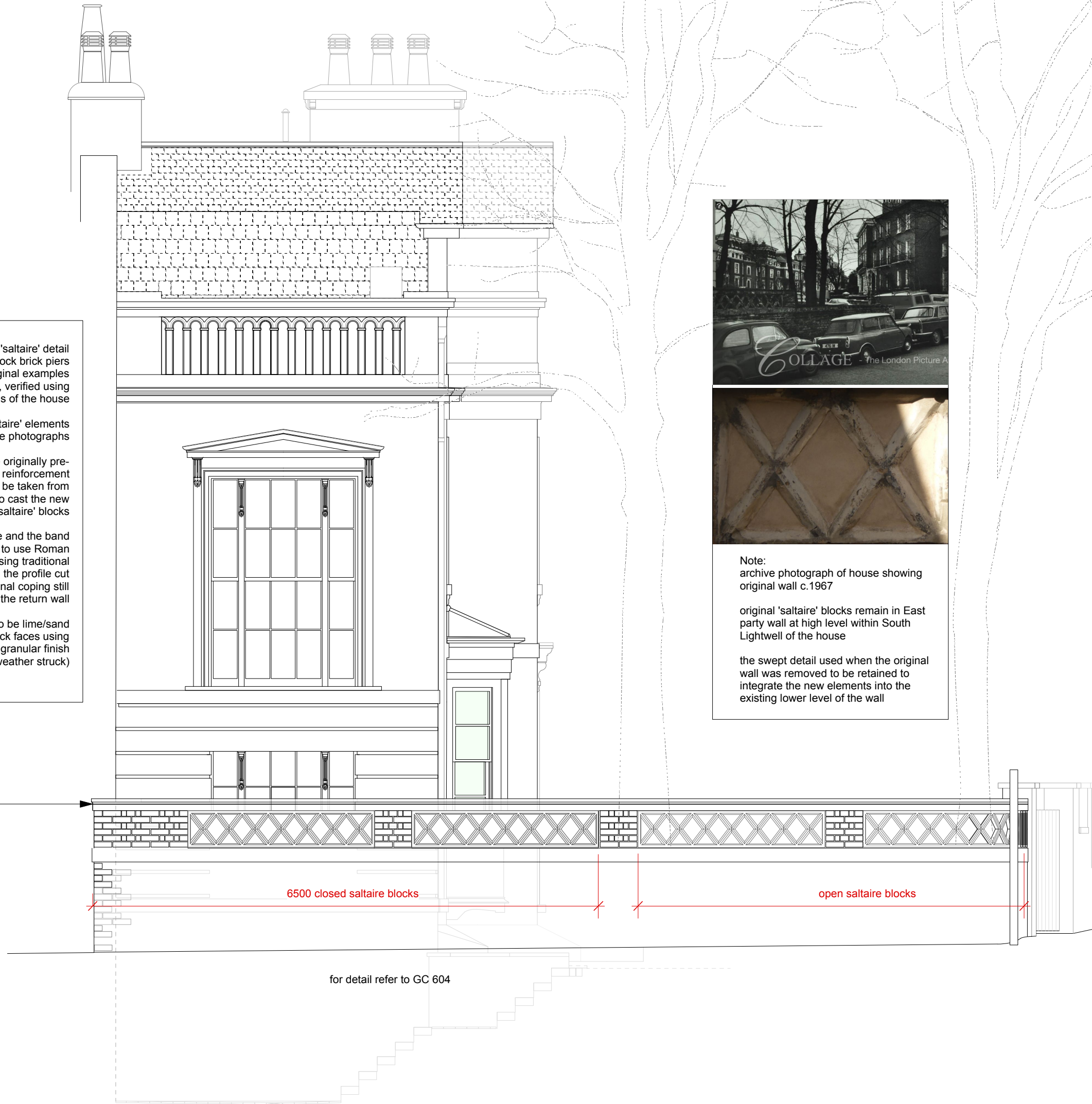
mortar and pointing to be lime/sand finished flush to brick faces using hessian to reveal granular finish (not trowel finish/weather struck)



Note:
archive photograph of house showing original wall c.1967

original 'saltaire' blocks remain in East party wall at high level within South Lightwell of the house

the swept detail used when the original wall was removed to be retained to integrate the new elements into the existing lower level of the wall



scale 1:50

1.0m

5.0m