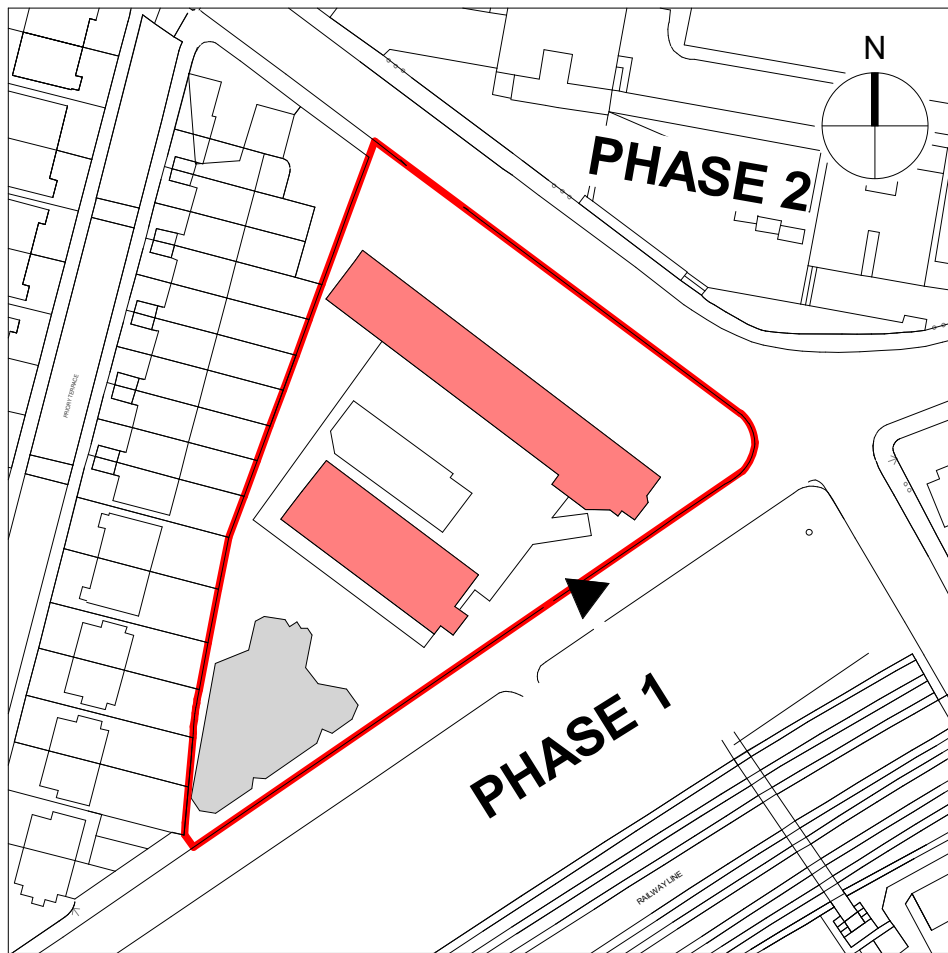
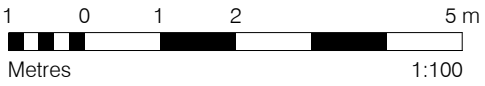


**GENERAL NOTES:**  
This drawing is © 2019 Pollard Thomas Edwards LLP (PTE).  
Use figured dimensions only. **DO NOT SCALE.**  
All dimensions are in millimetres unless noted otherwise.  
This drawing must be read in conjunction with all other relevant drawings and specifications from the Architect and other consultants.  
If in doubt, ask.

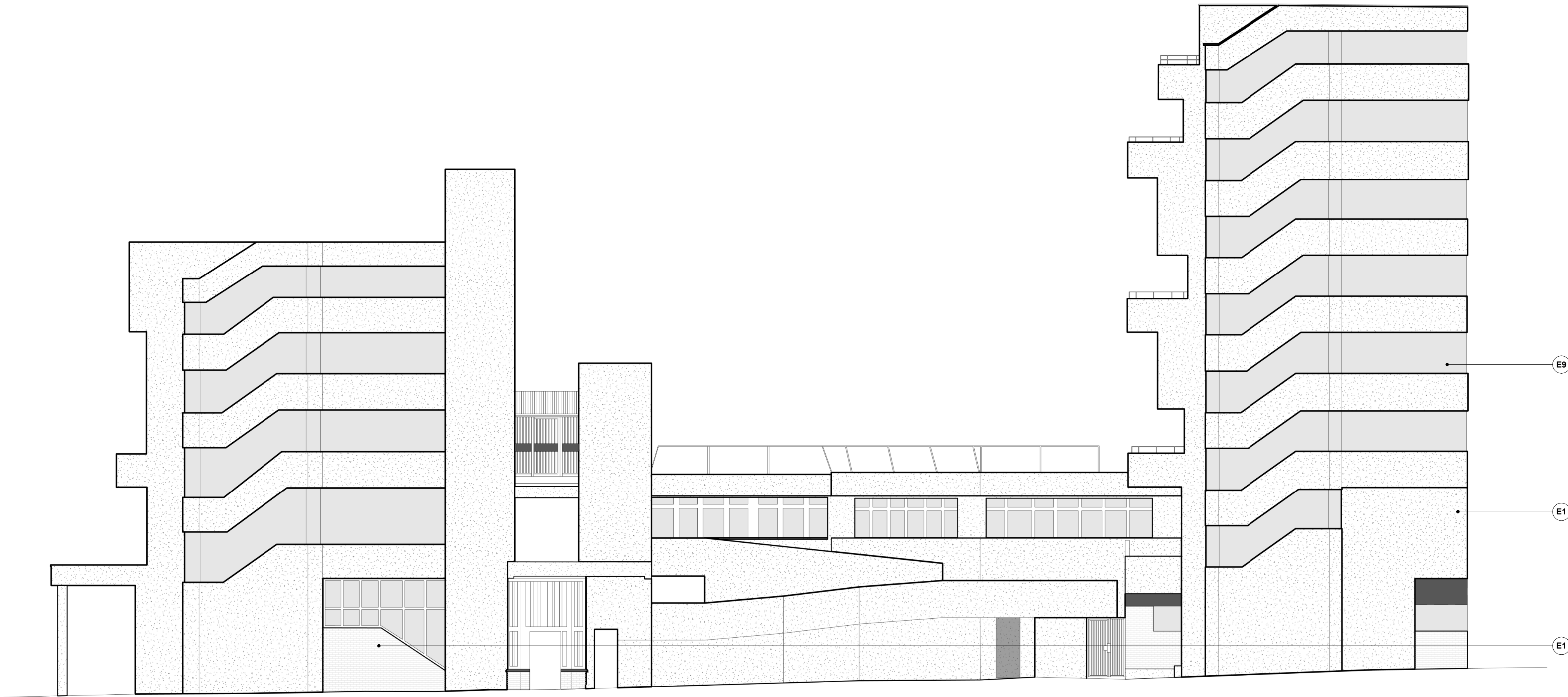
**SETTING OUT NOTES:**  
All setting out to be confirmed on site prior to construction - any discrepancy must be immediately reported to the Architect.  
All setting out to face of structure or to grid. All partitions set out to studwork or structure.  
For setting out and specification of M&E services refer to M&E Consultants documents.  
For setting out and specification of structure refer to Structural Engineer's documents.



KEY PLAN

MATERIALS KEY - EXISTING

- |    |  |
|----|--|
| E1 | Pebble dashed render   |
| E2 | White PVC cladding   |
| E3 | Glazing - white PVC frame in housing blocks, dark blue PVC frame for Community Centre  |
| E4 | Fluted concrete panel  |
| E5 | Brick with light-coloured mortar; red brick applicable to ground storey shopfronts only; claret-coloured bricks applicable to Belsize Road ground floor frontage only; white painted brick between shopfronts on Abbey Road frontage |
| E6 | In place concrete  |
| E7 | Render (in various colours; dark blue, light blue and off-white finishes across community centre)  |
| E8 | Door   |
| E9 | Opaque channel glass across stair cores  |



-	27.04.22	Issued for Planning Submission	SK	HJ
rev.	date	description	drawn	audited
drawing status				

PLANNING

Diespeker Wharf  
38 Graham Street  
London N1 8JX  
020 7336 7777  
forename.surname@ptea.co.uk  
@ptearchitects  
www.pollardthomasedwards.co.uk

**Pollard  
Thomas  
Edwards**

project	job number	drawn	scale	date created
Abbey Area Phase 3	19-049	SK	As indicated@A1	Apr'22
drawing title	drawing number	revision	submittal	
Existing Street Elevation	ARR-PTE-ZZ-ZZ-DR-A-10315	-		