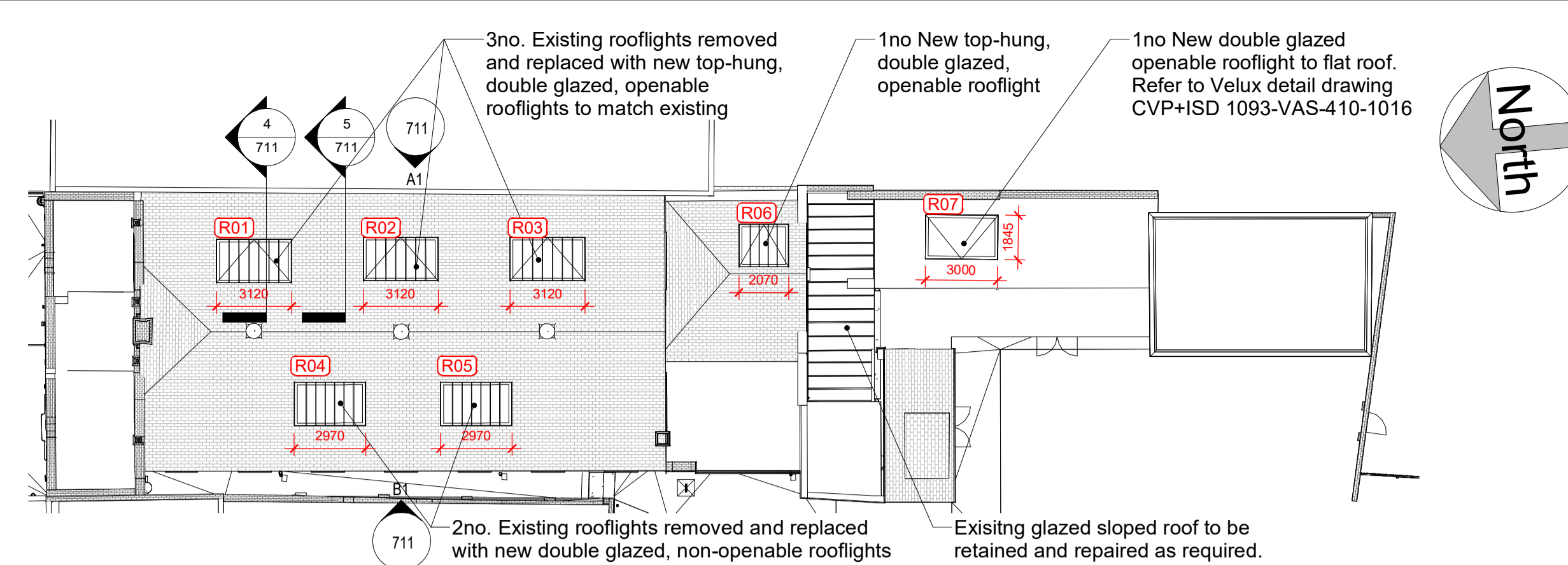


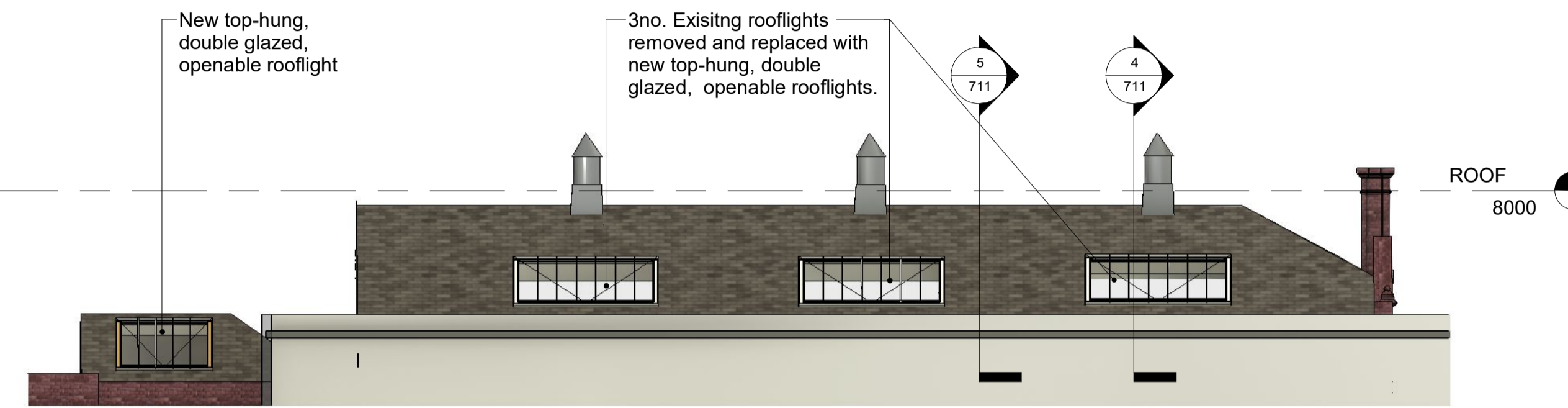
1 EXISTING ROOF PLAN
711 1:200



2 PROPOSED ROOF PLAN
711 1:200



A EXISTING ROOFLIGHTS ELEVATION A
711 1:100



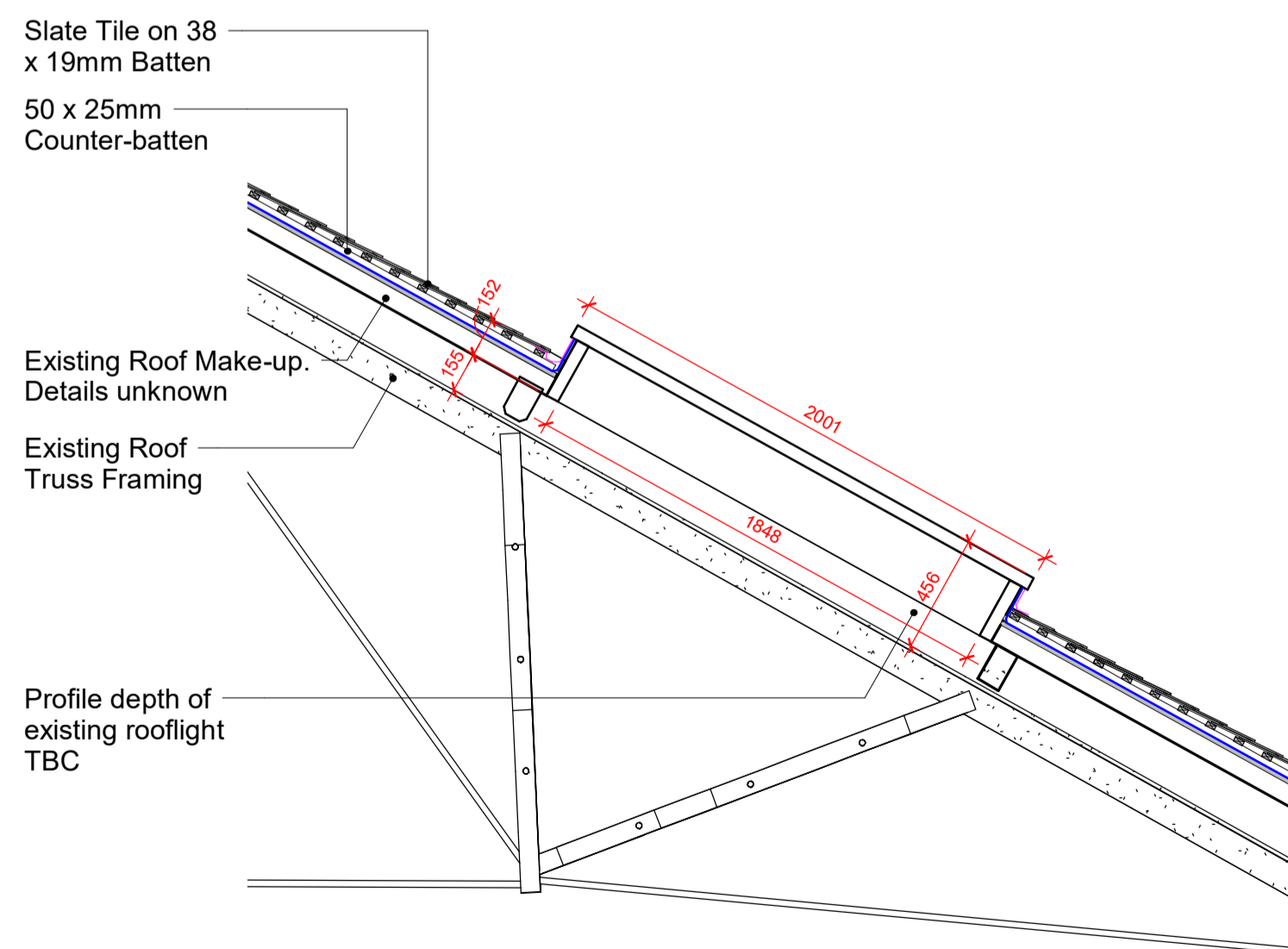
A1 PROPOSED ROOFLIGHTS ELEVATION A
711 1:100



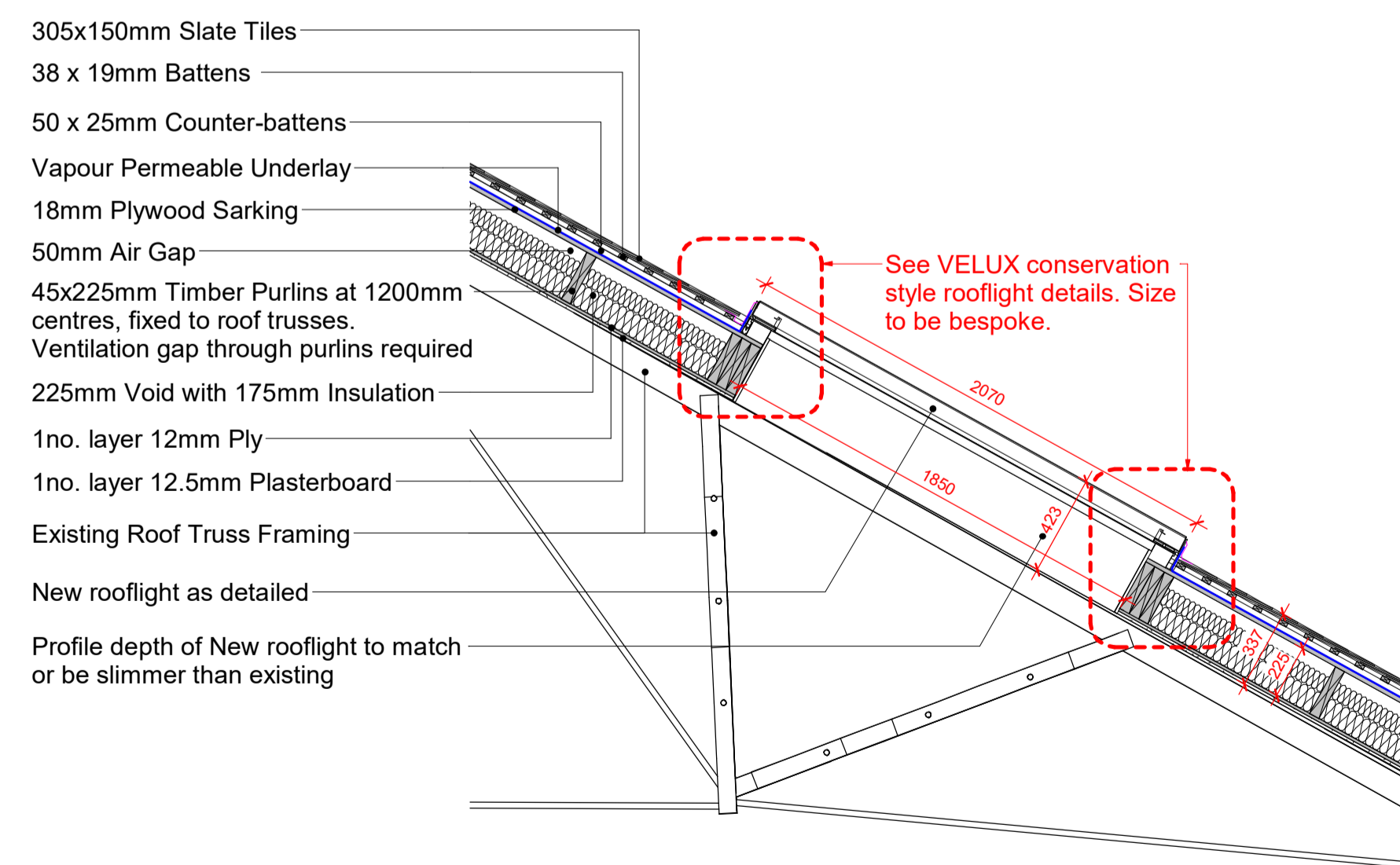
B EXISTING ROOF LIGHTS ELEVATION B
711 1:100



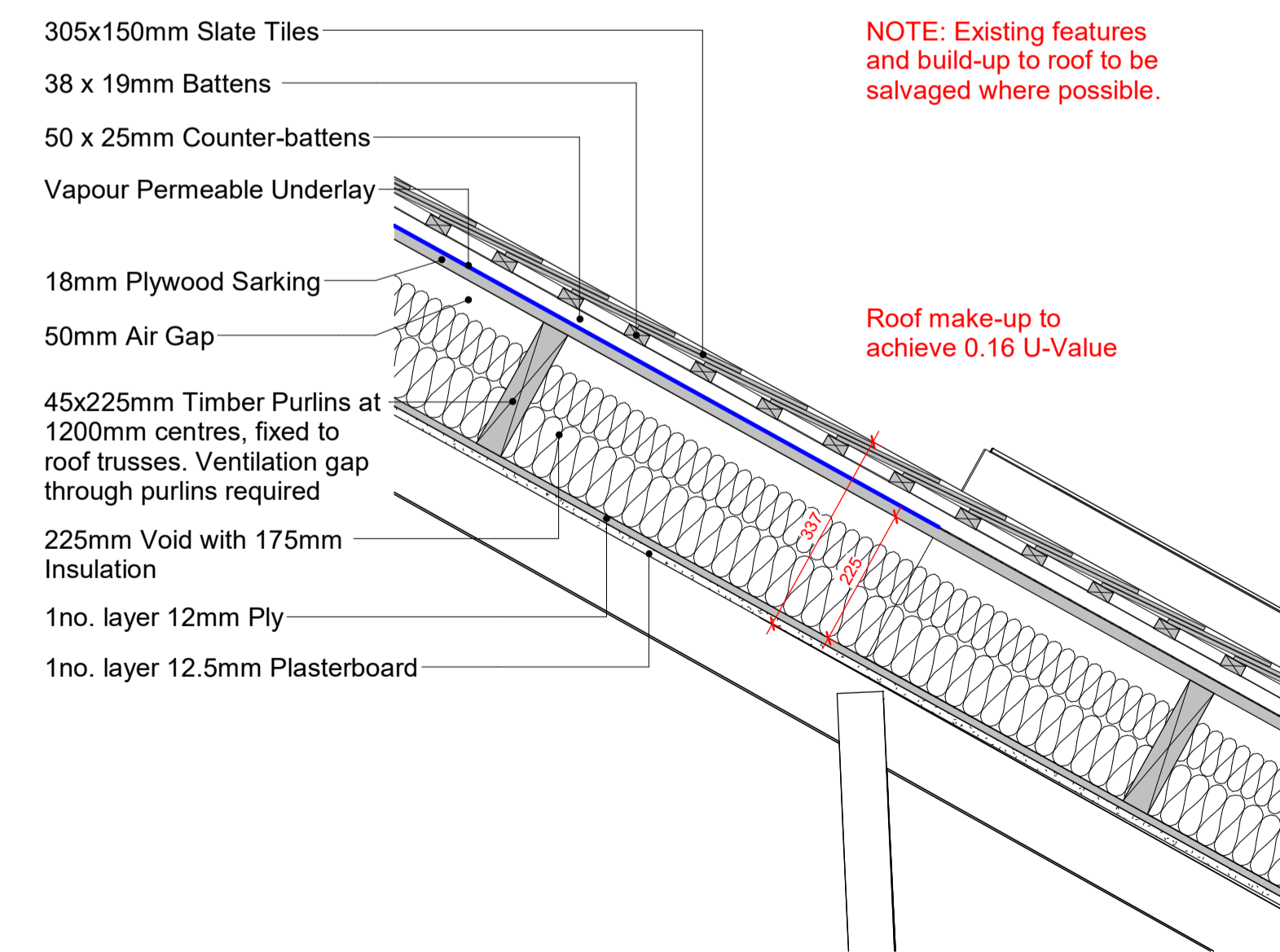
B1 PROPOSED ROOFLIGHTS ELEVATION B
711 1:100



3 EXISTING SECTION - ROOFLIGHTS AND ROOF MAKE-UP
711 1:25

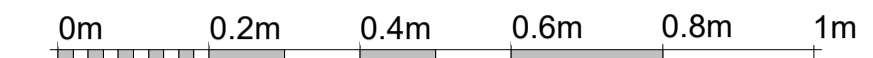


4 PROPOSED SECTION - ROOFLIGHTS AND ROOF MAKE-UP
711 1:25



5 PROPOSED SECTION - MAKE-UP OF INTERNAL LINING OF ROOF
711 1:10

PLANNING



VISUAL SCALE 1:10 @ A1



VISUAL SCALE 1:25 @ A1



VISUAL SCALE 1:100 @ A1



VISUAL SCALE 1:200 @ A1

ROOFLIGHT FINISHES

R01-R03
Double glazed, top-hung, openable rooflights.
PPC frame, Black RAL 9005.

R04-R05
Double glazed, non-openable rooflights.
PPC frame, Black RAL 9005.

R06
Double glazed, top-hung, openable rooflight.
PPC frame, Black RAL 9005.

R07
Double glazed, openable flat roof rooflight.
PPC frame, Anthracite Grey RAL 7016

REV	DATE	DESCRIPTION	CM	TC
01	01.06.22	UPDATED TO PLANNING CONSULTANT COMMENTS.		



NURSERY LOCATION
KENTISH TOWN 30 LEIGHTON ROAD
KENTISH TOWN
ENGLAND NW5 2QE

NEW NURSERY

EXISTING AND PROPOSED ROOFLIGHTS DETAIL AND MAKE UP OF INTERNAL LINING OF ROOF

CONSULTANT
LEWIS AND HICKEY
ARCHITECTURE

18 Farnham Road
Guildford
Surrey
GU1 4XA
Tel: 01483 560908
Fax: 01483 560660
Email: guldord@lewisandhickey.com

SCALE: As indicated PAPER: A1 DATE: 18/05/22 DRAWN: KB CHECKED: TC

PROJECT No: PKT001 DISCIPLINE CODE: A DRAWING No: 711

CONSULTANT PROJECT No: G4705 STATUS: P REVISION: 01