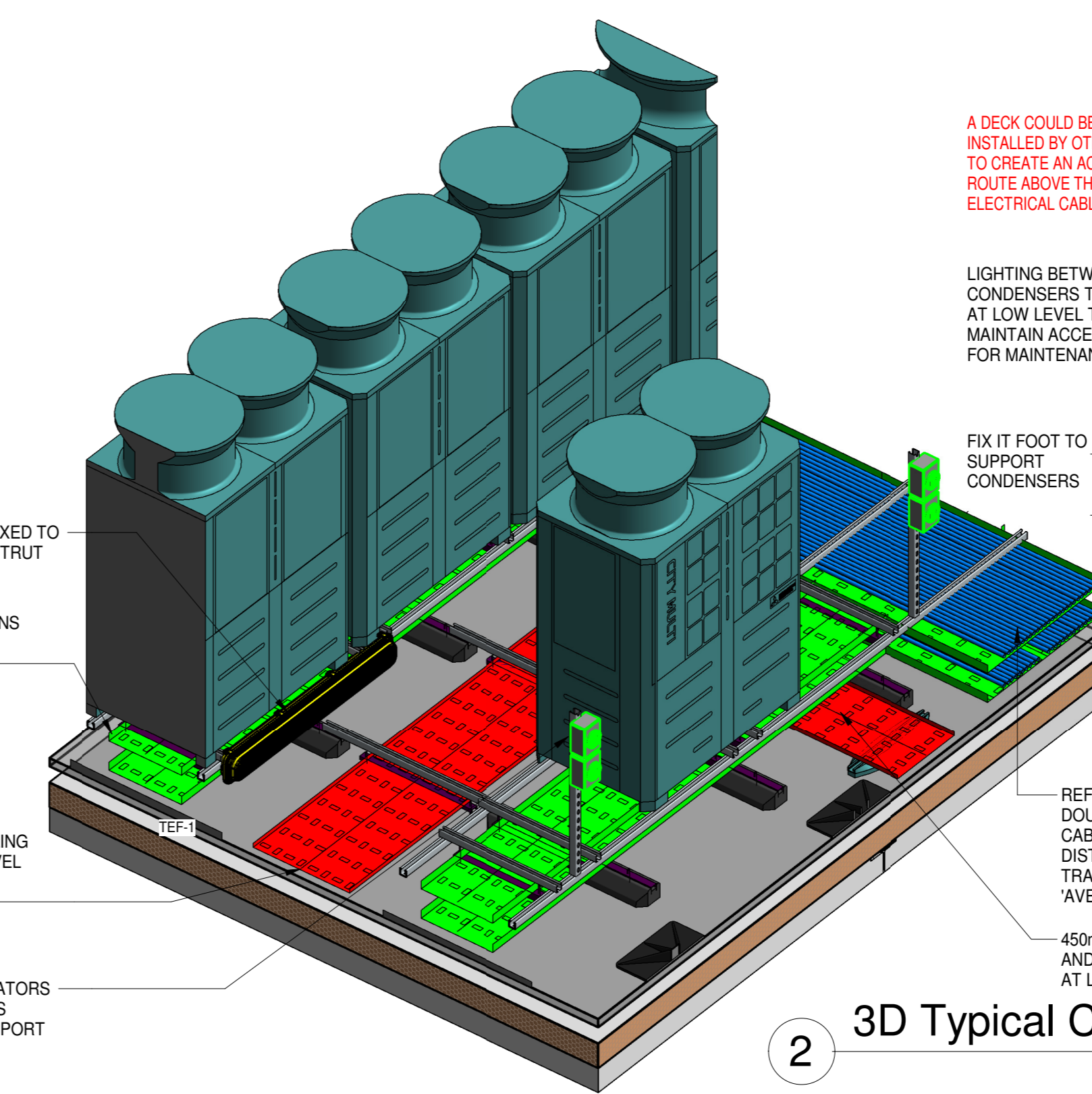
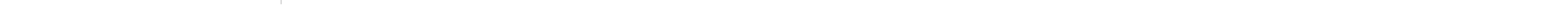
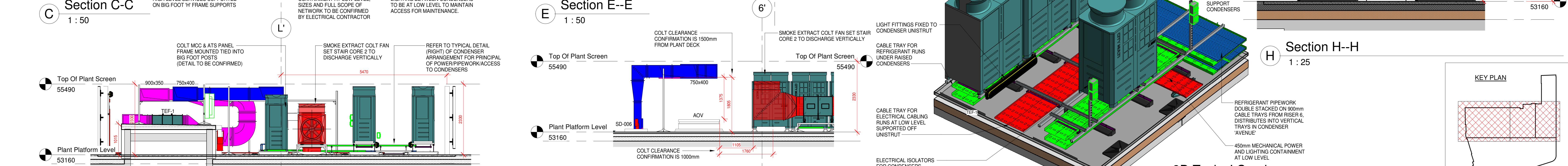
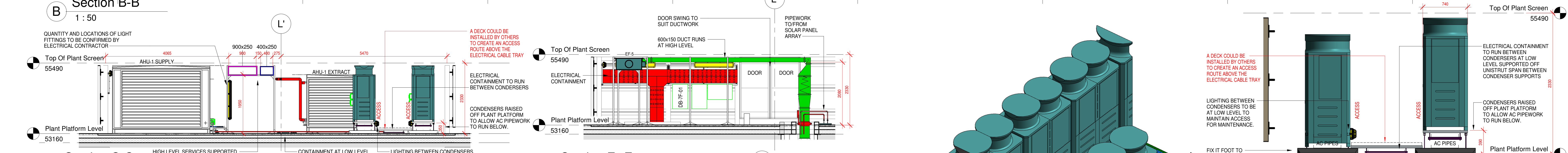
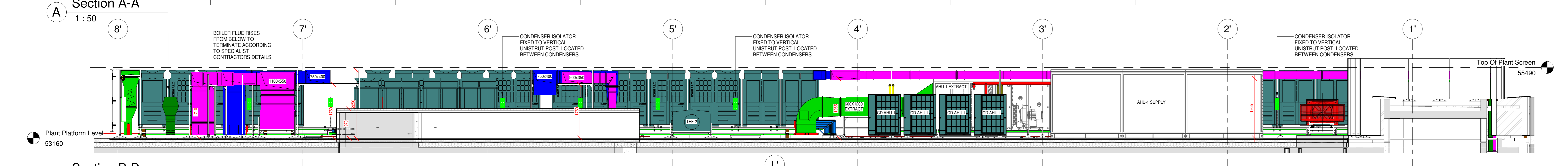
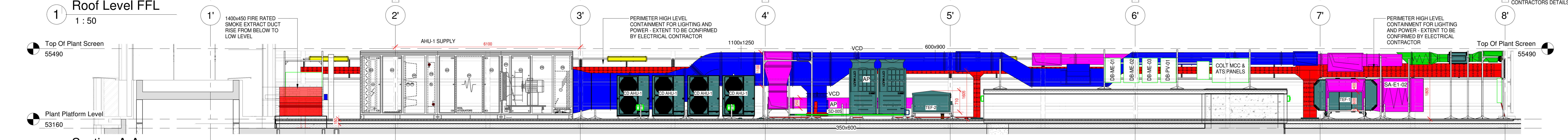
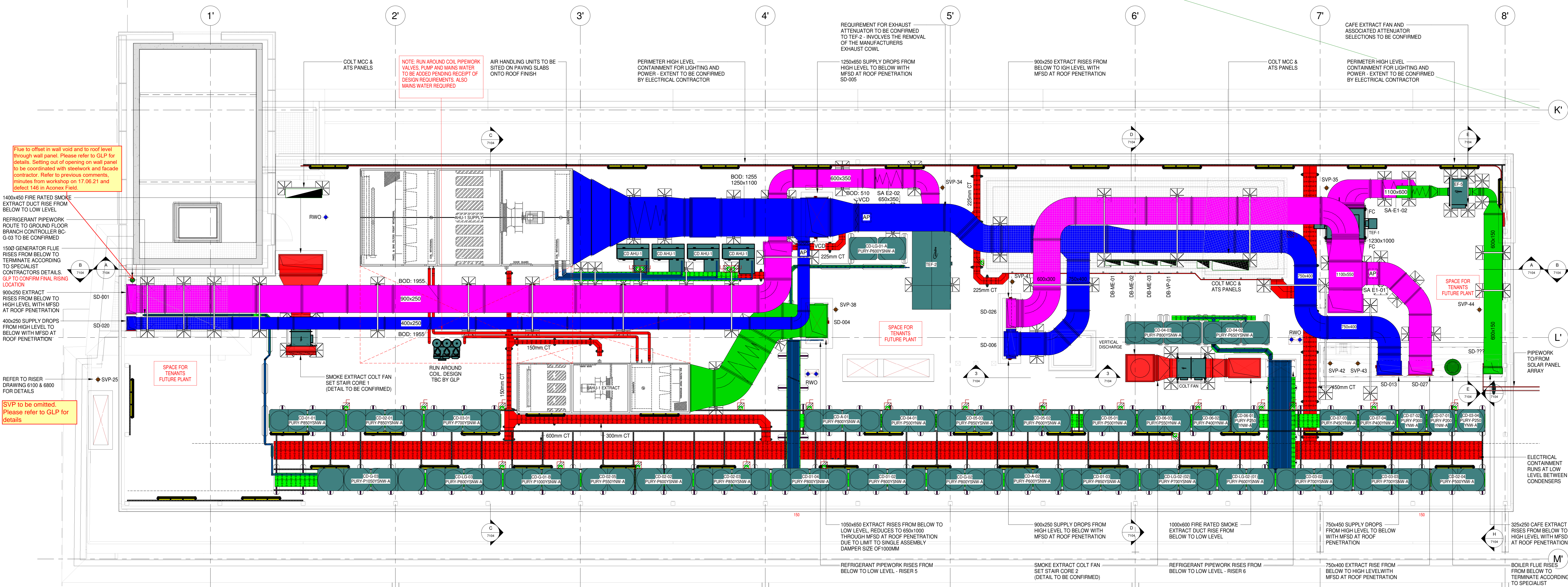


DO NOT SCALE FROM THIS DRAWING.  
ALL DIMENSIONS TO BE CHECKED ON SITE.

NOTES:  
1. THIS DRAWING IS TO BE READ IN CONJUNCTION WITH THE ARCHITECTS AND STRUCTURAL ENGINEERS DRAWINGS AND WITH THE PROJECTS SCHEDULES AND SPECIFICATIONS.  
2. THIS DRAWING IS TO BE READ IN CONJUNCTION WITH THE RELEVANT DETAILS AND SCHEMATICS.



**STATUS STAMP**

- A - Reviewed  
No Comments
- B - Reviewed  
Incorporate comments and resubmit
- C - Reviewed  
Rejected for reasons noted, rework and resubmit

Marks Barfield Ltd, 50 Bromley Rd, London, SW4 0DL

Setting out dimensions in floorplan have disappeared. Please add

As previously commented, the level of services needs to be coordinated with Dura Composite Access platform. Access platform level (53.160) doesn't seem to consider the minimum platform height, as per Dura-composites' technical submittal. Platform needs to sit on the attenuation cells; with the levels shown in this drawing, it would leave only 45mm for the access platform. Refer to drawing A-1410 for roof levels and build-up. Please clearly indicate the correct level of the access platform. All services to be under plant screen level.

Date	Description	Rev
03.08.2021	UPDATED TO SUIT MALA SKETCH	PI3
17.08.2021	UPDATED TO SUIT COMMENTS	PI2
22.03.2021	UPDATED TO SUIT COMMENTS	PI1
01.12.2020	ISSUED FOR APPROVAL	PI0

**CONTRACT**  
Stephenson House - Commercial

**TITLE**  
OFFICE  
Residential Block  
Roof Level  
Combined Services  
Co-ordinated Services Layout

**ARCHITECT**  
Marks Barfield Architects  
**CONSULTANT**  
GLP



9 Hewett Street  
London EC2A 3NN  
Tel: 0207 456 1200  
Fax: 0207 456 1201  
Email: mala@mala.co.uk

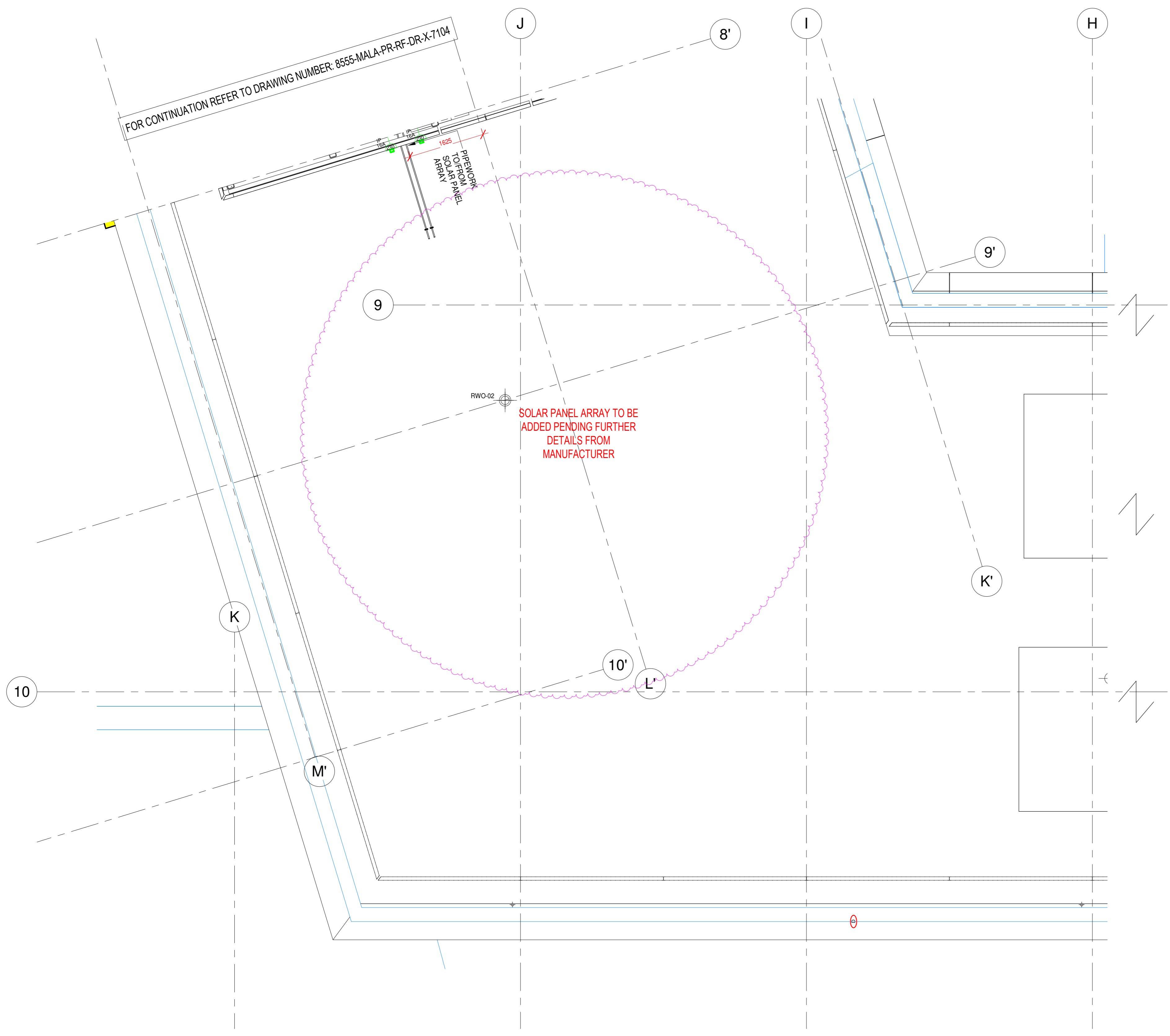
Drawing Status: **ISSUED FOR APPROVAL**

SCALE: As indicated @ A0 DRAWN: CADTECH DATE: 01/12/20  
DRG No.: 8555-MALA-PR-RF-DR-X-7104

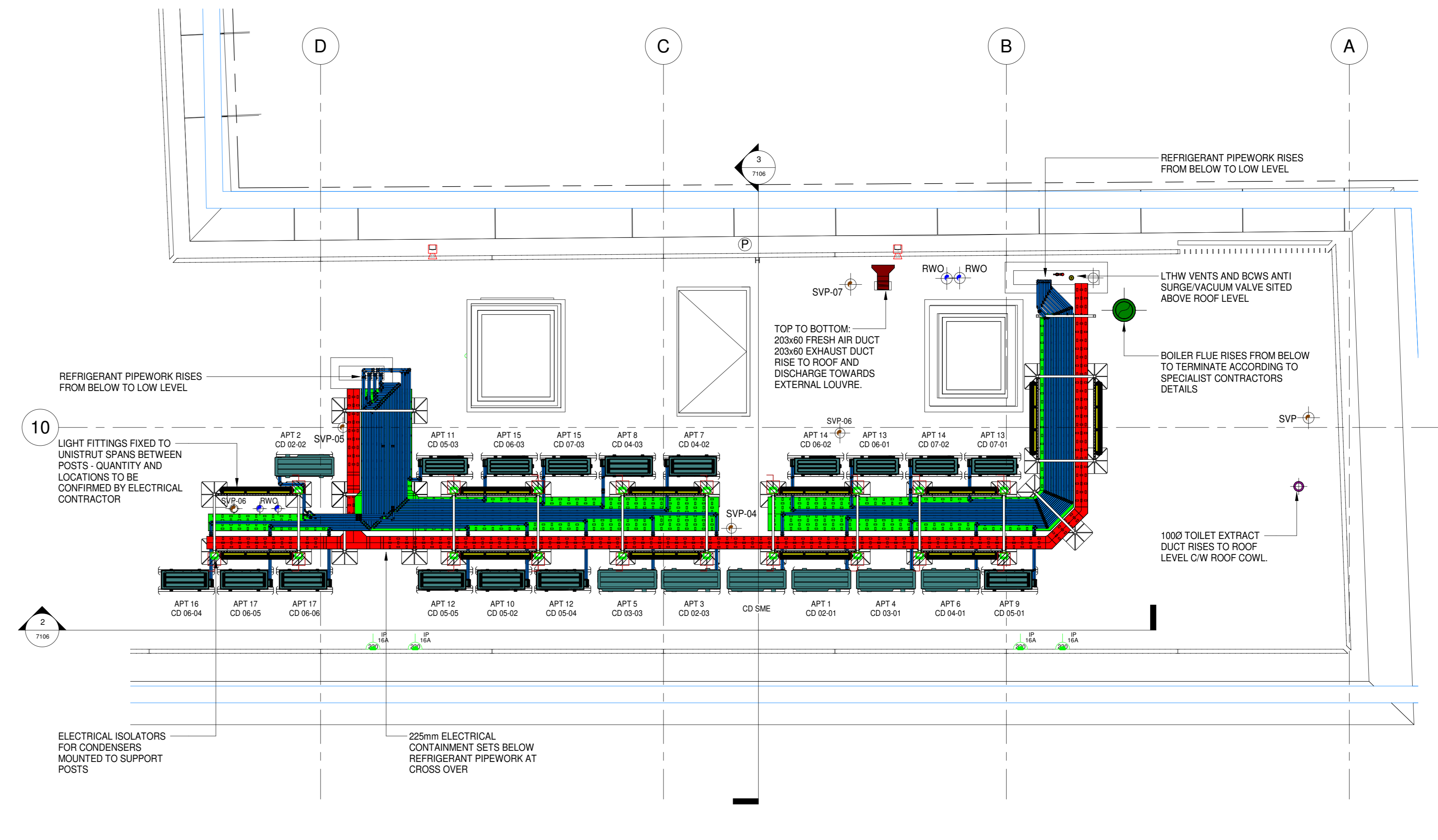
03/08/2021 14:08:14

DO NOT SCALE FROM THIS DRAWING.  
ALL DIMENSIONS TO BE CHECKED ON SITE.

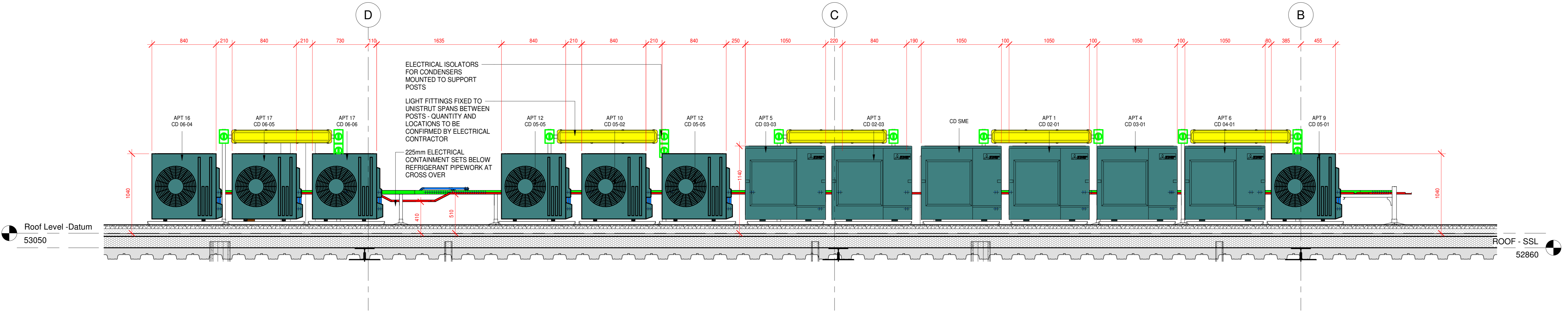
- NOTES:
- THIS DRAWING IS TO BE READ IN CONJUNCTION WITH THE ARCHITECTS AND STRUCTURAL ENGINEERS DRAWINGS AND WITH THE PROJECTS SCHEDULES AND SPECIFICATIONS.
  - THIS DRAWING IS TO BE READ IN CONJUNCTION WITH THE RELEVANT DETAILS AND SCHEMATICS.



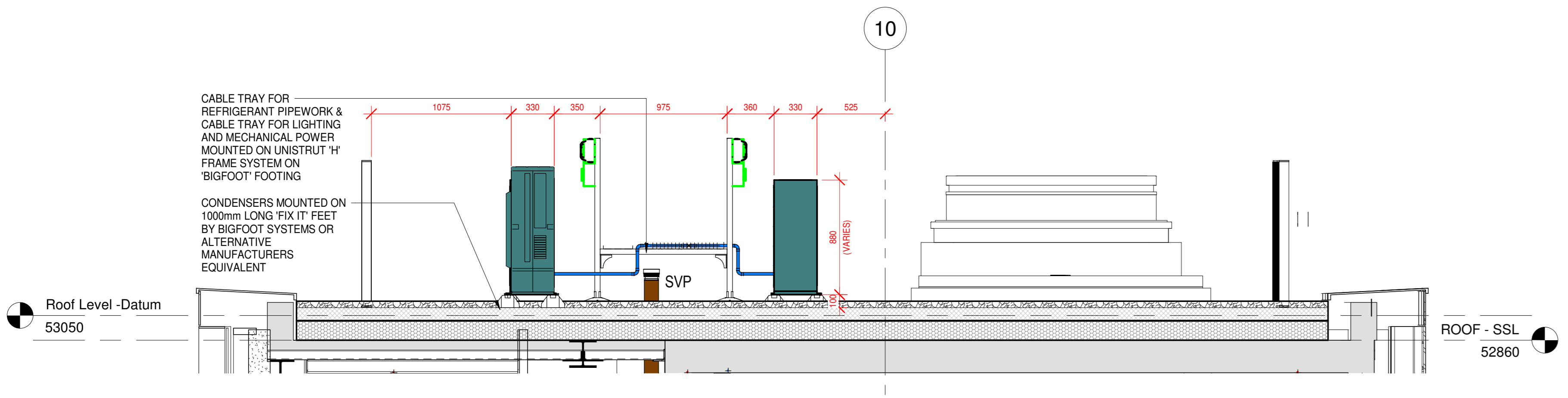
4 Roof Level FFL Residential Layout  
1 : 50



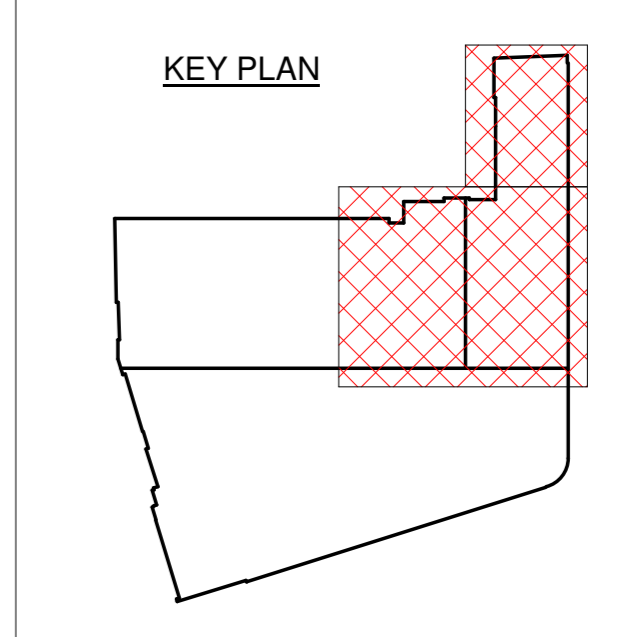
1 Roof Level FFL Residential-2  
1 : 50



2 Section E-E  
1 : 25



3 Section F-F  
1 : 25



30-03-2021	ALL LARGE AC UNITS RELOCATED TO BACK ROW AWAY FROM AUTO OPENING VENT	COO
03-12-2020	ISSUED FOR APPROVAL	POP
Date	Description	Rev

CONTRACT

Stephenson House - Residential

TITLE

Residential Block  
Roof Level  
Combined Services  
Co-ordinated Services Layout

ARCHITECT

Marks Barfield Architects  
CONSULTANT  
GLP

9 Hewett Street  
London EC2A 3NN  
Tel: 0207 456 1200  
Fax: 0207 456 1201  
Email: mala@mala.co.uk

9  
**MALA**

Drawing Status

CONSTRUCTION ISSUE

SCALE As indicated @ A0 DRAWN CADTECH DATE 03/12/20  
DRG No. 8555-MALA-PR-RF-DR-X-7106

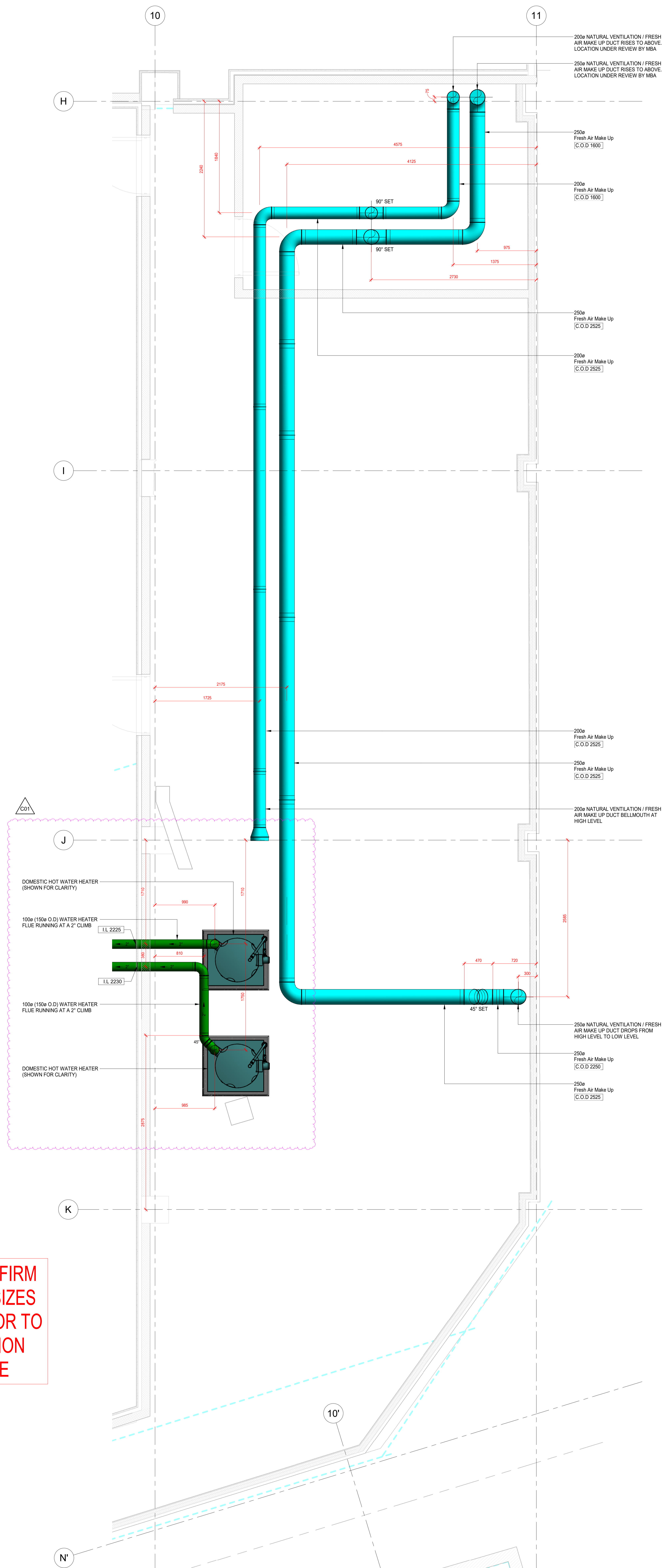
30/03/2021 15:22:25

NOTES:

- THIS DRAWING IS TO BE READ IN CONJUNCTION WITH THE ARCHITECTS AND STRUCTURAL ENGINEERS DRAWINGS AND WITH THE PROJECTS SCHEDULES AND SPECIFICATIONS.
- THIS DRAWING IS TO BE READ IN CONJUNCTION WITH THE RELEVANT DETAILS AND SCHEMATICS.
- DUCT SIZES ARE BASED ON INTERNAL DIMENSIONS AND DO NOT INCLUDE PROVISIONS FOR INSULATION AND/OR BRACKETRY.
- ALL METAL DUCTWORK TO BE IN ACCORDANCE WITH HVCA DW1144
- FIRE DAMPERS TO BE PROVIDED AT ALL INTERSECTIONS WITH THE FIRE COMPARTIMENTATION LAYOUT. MOTORIZED FIRE AND SMOKE DAMPERS TO BE PROVIDED WHERE SERVICES PENETRATE PROTECTED ESCAPE ROUTES AND FIRE COMPARTMENT WALLS FOR HORIZONTAL PROGRESSIVE EVACUATION.
- PROVIDE ACCESS DOORS IN ACCORDANCE WITH DW1144. WHERE POSSIBLE, LOCATE DAMPERS IN PROXIMITY TO ONE ANOTHER TO SHARE A COMMON ACCESS DOOR AND MINIMISE CEILING VOID ACCESS. WHERE POSSIBLE, LOCATE ACCESS DOORS WITHIN EASILY ACCESSIBLE AREAS SUCH AS CORE AREAS AND RISERS.
- LOCATE VOLUME CONTROL DAMPERS IN ACCORDANCE WITH MANUFACTURER REQUIREMENTS AND WHEREVER PRACTICABLE ON STRAIGHT LENGTHS OF DUCT.

LEGEND

- SD - SMOKE DAMPER
- FD - FIRE DAMPER
- C.O.D - CENTRE OF DUCT
- B.O.D - BOTTOM OF DUCT
- EG - EXTRACT GRILLE
- SG - SUPPLY GRILLE
- EV - EXTRACT VALVE
- SV - SUPPLY VALVE
- VCD - VOLUME CONTROL DAMPER
- NRD - NON RETURN DAMPER
- HRU - HEAT RECOVERY UNIT
- FCU - FAN COIL UNIT
- TEF - TOILET EXTRACT FAN
- FC - FLEXIBLE CONNECTION



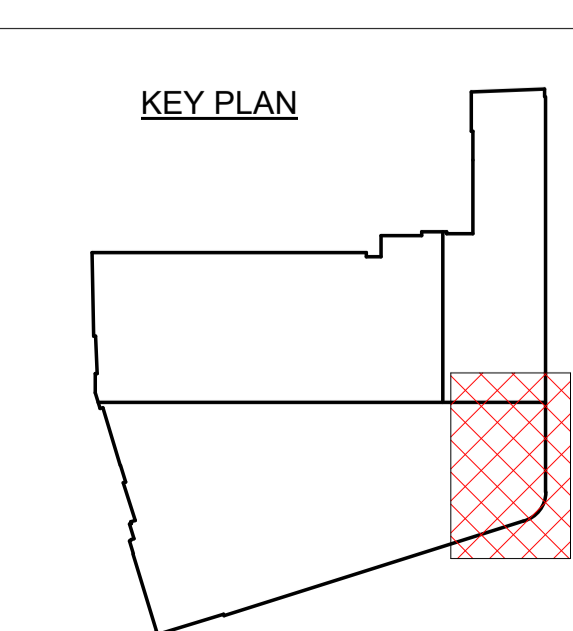
**GLP ARE TO CONFIRM ALL DUCT/FLUE SIZES AND ROUTES PRIOR TO ANY INSTALLATION WORK ON SITE**

ALL INVERT LEVELS FOR DRAINAGE, RAINWATER AND CONDENSATE PIPEWORK ARE SHOWN TO THE UNDERSIDE OF THE PIPE FROM THE BOTTOM LEFT CORNER OF THE DRAWING

ALL LEVELS SHOWN ON THIS DRAWING REFER TO THE SERVICES SETTING OUT DATUM LEVEL. ANY DIMENSIONS OR SERVICES ELEVATIONS SHOWN ARE ASSOCIATED WITH THIS DATUM. FOR ALL ARCHITECTURAL FINISHED FLOOR LEVELS AND RAISED FLOOR LEVELS PLEASE REFER TO ARCHITECTURAL INFORMATION

SERVICES DATUM LEVELS  
ALL SERVICES ABOVE DATUM DENOTED THUS:  
XXXXX DISTANCE IN mm TO US OF RECTANGULAR & FLAT OVAL DUCTS, ELECTRICAL BUSBARS, CABLE LADDERS, TRAYS, TRUNKING, & CENTRE LINE OF CIRC DUCTS & PIPEWORK. LEVELS PREFIXED LL INDICATES INVERT LEVEL OF SOIL, GRAVITY RAINWATER & CONDENSATE PIPE ABOVE DATUM LEVEL. LEVELS PREFIXED TO P INDICATES LEVEL TO TOP OF PIPE FOR SIPHONIC RAINWATER ABOVE DATUM

BASEMENT	
DATUM LEVEL	23.350
SSL	23.108



Date	Description	Rev
02-12-2020	ISSUED FOR CONSTRUCTION. WATER HEATER LOCATIONS & FLUE ROUTE UPDATED	001
27-10-2020	ISSUED FOR CONSTRUCTION	000
26-06-2020	ISSUED FOR APPROVAL	002

CONTRACT  
**Stephenson House**

TITLE  
**Basement Commercial Plantroom Mechanical Services Ventilation Layout**

ARCHITECT  
**Marks Barfield Architects**

CONSULTANT  
**GLP**

Drawing Status  
**ISSUED FOR CONSTRUCTION**

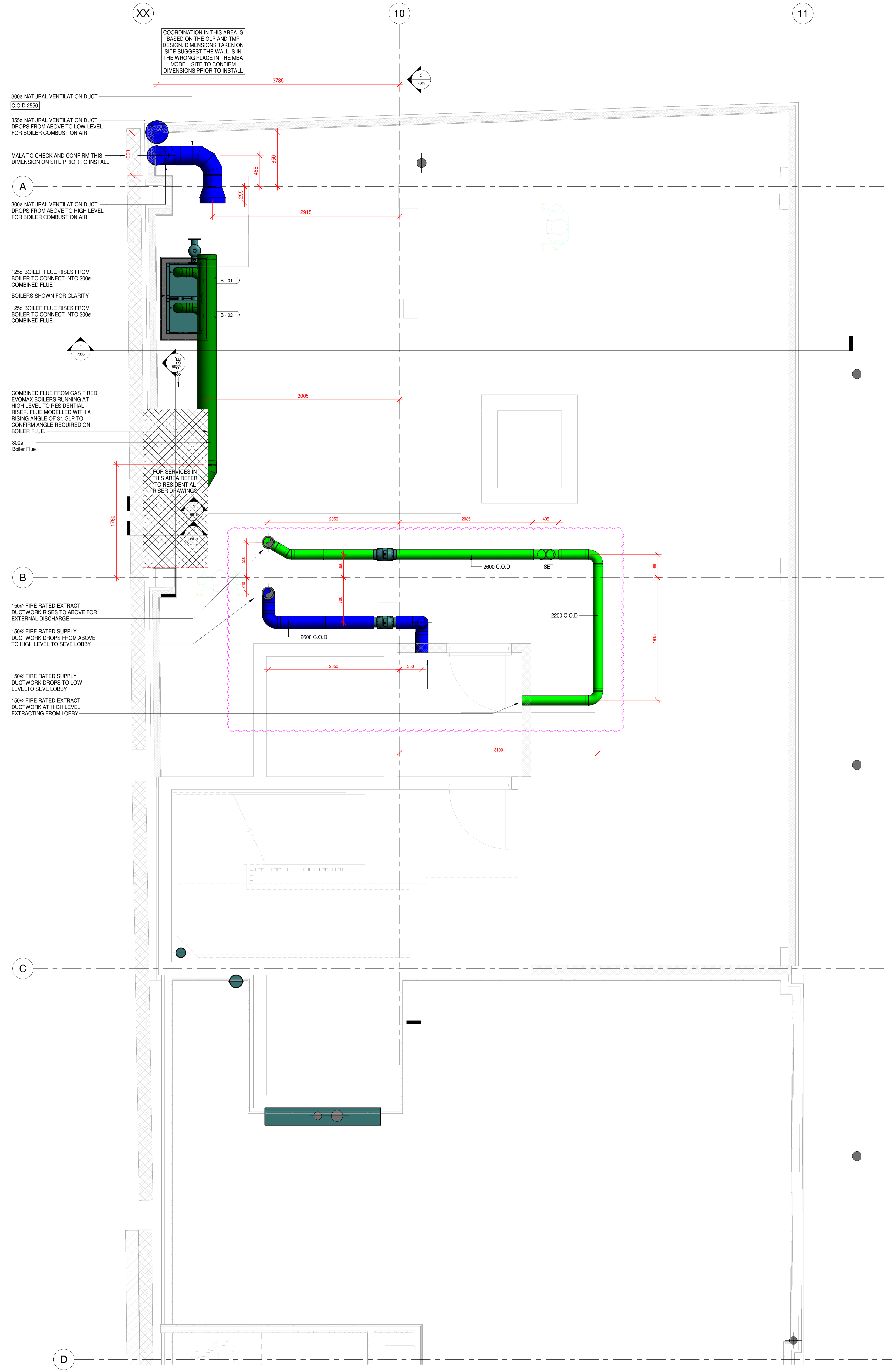
SCALE 1:25 @ AD DRAWN CADTECH DATE 22/06/20  
DRG No. 8555-MALA-PR-B1-DR-X-7300 C01

NOTES:

1. THIS DRAWING IS TO BE READ IN CONJUNCTION WITH THE ARCHITECTS AND STRUCTURAL ENGINEERS DRAWINGS AND WITH THE PROJECTS SCHEDULES AND SPECIFICATIONS.
2. THIS DRAWING IS TO BE READ IN CONJUNCTION WITH THE RELEVANT DETAILS AND SCHEMATICS.
3. DUCT SIZES ARE BASED ON INTERNAL DIMENSIONS AND DO NOT INCLUDE PROVISIONS FOR INSULATION AND/OR BRACKETRY.
4. ALL METAL DUCTWORK TO BE IN ACCORDANCE WITH HVCA DW1144
5. FIRE DAMPERS TO BE PROVIDED AT ALL INTERSECTIONS WITH THE FIRE COMPARTIMENTATION LAYOUT. MOTORIZED FIRE AND SMOKE DAMPERS TO BE PROVIDED WHERE SERVICES PENETRATE PROTECTED ESCAPE ROUTES AND FIRE COMPARTMENT WALLS FOR HORIZONTAL PROGRESSIVE EVACUATION.
6. PROVIDE ACCESS DOORS IN ACCORDANCE WITH DW1144. WHERE POSSIBLE, LOCATE DAMPERS IN PROXIMITY TO ONE ANOTHER TO SHARE A COMMON ACCESS DOOR AND MINIMISE CEILING VOID ACCESS. WHERE POSSIBLE, LOCATE ACCESS DOORS WITHIN EASILY ACCESSIBLE AREAS SUCH AS CORE AREAS AND RISERS.
7. LOCATE VOLUME CONTROL DAMPERS IN ACCORDANCE WITH MANUFACTURER REQUIREMENTS AND WHEREVER PRACTICABLE ON STRAIGHT LENGTHS OF DUCT.

LEGEND

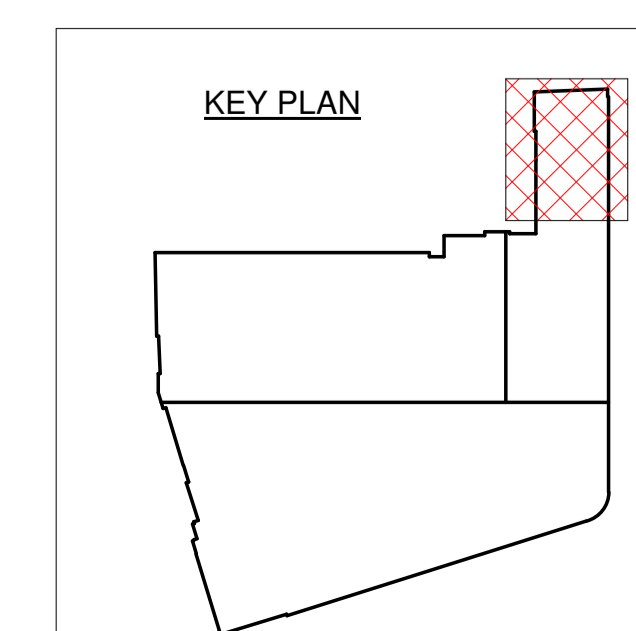
- SD - SMOKE DAMPER
- FD - FIRE DAMPER
- C.O.D - CENTRE OF DUCT
- B.O.D - BOTTOM OF DUCT
- EG - EXTRACT GRILLE
- SG - SUPPLY GRILLE
- EV - EXTRACT VALVE
- SV - SUPPLY VALVE
- VCD - VOLUME CONTROL DAMPER
- NRD - NON RETURN DAMPER
- HRU - HEAT RECOVERY UNIT
- FCU - FAN COIL UNIT
- TEF - TOILET EXTRACT FAN
- FC - FLEXIBLE CONNECTION



ALL LEVELS SHOWN ON THIS DRAWING REFER TO SERVICES SETTING OUT DATUM LEVELS. ANY DIMENSIONS OR SERVICES ELEVATIONS SHOWN ARE ASSOCIATED WITH THIS DATUM. FOR ALL ARCHITECTURAL FINISHED FLOOR LEVELS AND RAISED FLOOR LEVELS PLEASE REFER TO ARCHITECTURAL INFORMATION

SERVICES DATUM LEVELS  
ALL SERVICES ABOVE DATUM DENOTED THUS:-  
[XXXX] DISTANCE IN mm TO LIS OF RECTANGULAR & FLAT  
OVAL DUCTS, ELECTRICAL BUSBARS, CABLE LADDERS,  
TRAYS, TRUNKING, & CENTRE LINE OF CIRC DUCTS &  
PIPEWORK. LEVELS PREFIXED LL INDICATES INVERT LEVEL  
OF SOIL, GRAVITY RAINWATER & CONDENSATE PIPE ABOVE  
DATUM LEVEL. LEVELS PREFIXED T.O.P INDICATES LEVEL  
TO TOP OF PIPE FOR SIPHONIC RAINWATER ABOVE DATUM

BASEMENT	
DATUM LEVEL	23.350
SSL	30.460



25.09.2020	UPDATED TO SUIT MBA COMMENTS AND GLP RE-DESIGN	CD1
01.09.2020	ISSUED FOR CONSTRUCTION	CD0
21.04.2020	ISSUED FOR APPROVAL	PR0
Date	Description	Rev

CONTRACT  
Stephenson House - Residential

TITLE  
Basement  
Residential Plantroom  
Mechanical Services  
Ventilation Layout

ARCHITECT  
Marks Barfield Architects  
CONSULTANT  
GLP

**MALA** 9 Hewett Street  
London EC2A 3NN  
Tel: 0207 456 1200  
Fax: 0207 456 1201  
Email: mala@mala.co.uk

Drawing Status **CONSTRUCTION ISSUE**  
SCALE 1 : 25 @ A0 DRAWN CADTECH DATE 20/04/20  
DRG No. 8555-MALA-PR-B1-DR-X-7305 C01