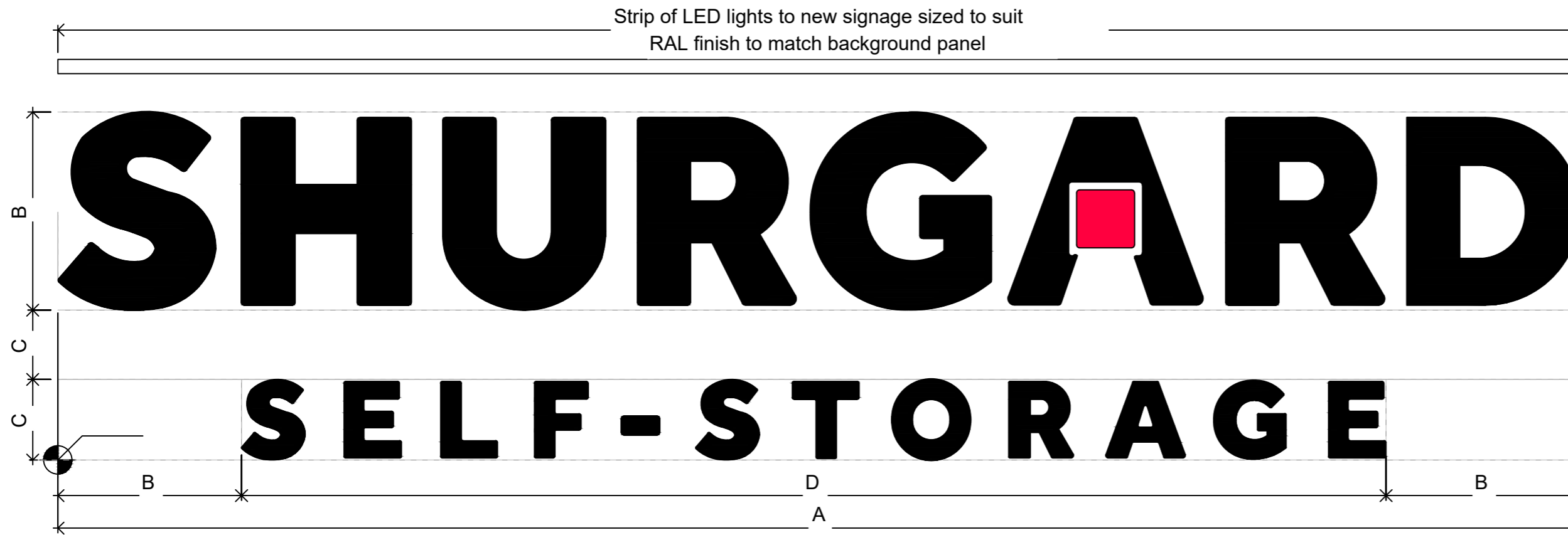


All levels and dimensions to be checked on site prior to construction / fabrication; report discrepancies immediately. Do not scale dimensions from this drawings. This drawing is copyright protected.

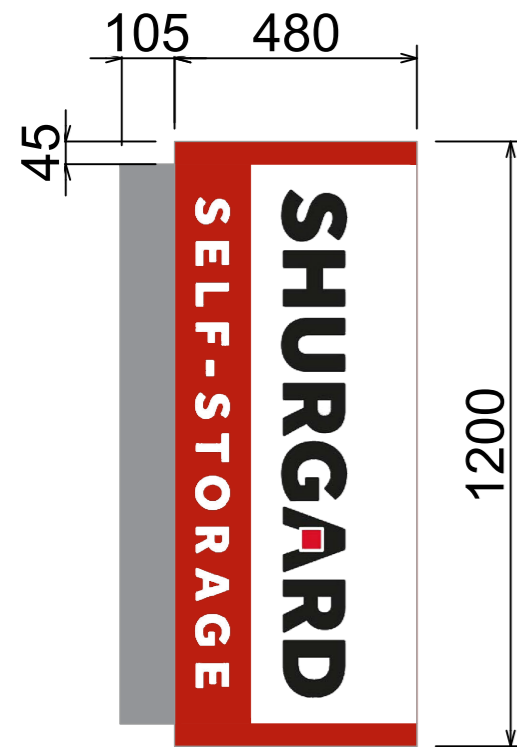
REVISION	
A	270522 Signage updated
B	310522 Sign depth added



**Building Signage Specification**

Material Flat individual letters built in D-Bond. Letters black matt RAL 9017 applied to white cladding panels.  
Strip of LED/Trough spot lights to above signage  
(Proposed Sloan LED PosterBOX 3).

Shop Signage Template  
1:15



Sign 2 Specification  
1 no. MEDIUM required  
4425mm above ground level

The projecting sign is mounted on a grey Pantone 404C separator with the white part of the logo facing the street. Thickness of panel: 210 mm.  
Preferred Option: 2D letters - aluminum panel  
Built in 3 mm aluminium panels 125mm deep powder coated red (PMS 186-C /RAL 3020). All lettering fret cut out and backed up in 3mm 050 opal acrylic.  
All text and images illuminated by internal GE power strips.

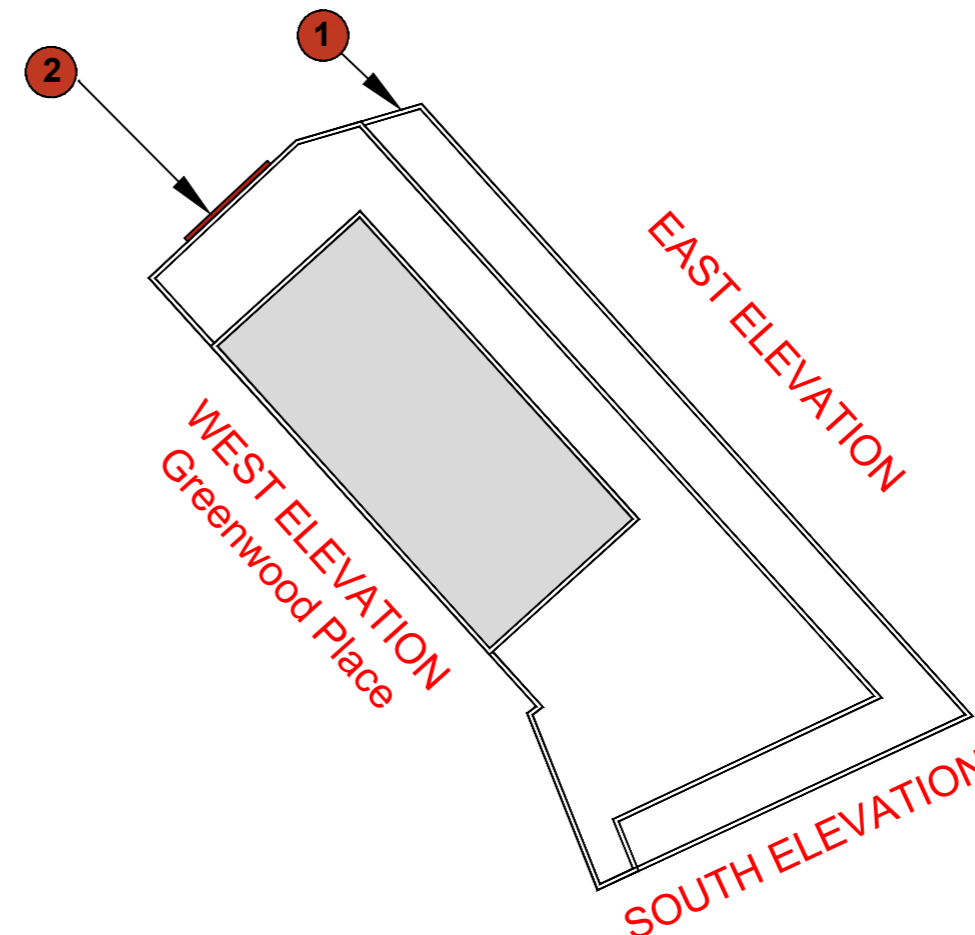
Signage Size and Dimensions Key:

Signage Size	S	XS
A	8,000 mm	5,500 mm
B	1,000 mm	690 mm
C	400 mm	280 mm
D	6,000 mm	4,130 mm

Project Specific O/A Size Legend:

Sign Number	Size	Length x Height	Illuminated	Trough Colour	Height Above FGL	Sign depth
1	S	8,000mm x 1,800 mm	Yes	White	5175mm	3 to 5mm
2	M	1,200mm x 480 mm	Yes	n/a	4425mm	3 to 5mm

NORTH ELEVATION  
Greenwood Place



Location Key  
1:500

TENDER

SCALE	DATE	DRAWN	CHECKED
V	MAR'22	AF	DA

PROJECT  
SHURGARD [UK]  
19 GREENWOOD PLACE  
LONDON: NW5 1LB

DRAWING  
SIGNAGE SPECIFICATION

Threesixty  
Architecture

10 MONTROSE STREET  
GLASGOW  
G1 1RE  
0141 229 7575  
www.360architecture.com

DRAWING No.  
21068GA\_90\_001B