



RIGHT OF LIGHT  
CONSULTING  
Chartered Surveyors

# Daylight and Sunlight Report

(Neighbouring Properties)

**30 May 2022**

5 Ventana Court  
Latchfords Yard  
61A Endell Street  
London  
WC2H 9AJ

---

Right of Light Consulting

Burley House  
15-17 High Street  
Rayleigh  
Essex SS6 7EW

Tel: 0800 197 4836

[www.right-of-light.co.uk](http://www.right-of-light.co.uk)

---

## CONTENTS

<b>1 EXECUTIVE SUMMARY .....</b>	<b>2</b>
1.1 Overview .....	2
<b>2 INFORMATION SOURCES .....</b>	<b>3</b>
2.1 Drawings .....	3
2.2 Daylight Distribution Room Layout Information .....	4
<b>3 METHODOLOGY OF THE ASSESSMENT .....</b>	<b>5</b>
3.1 Local Planning Policy.....	5
3.2 National Planning Policy Framework.....	5
3.3 Daylight to Windows .....	6
3.4 Sunlight availability to Windows.....	7
3.5 Overshadowing to Gardens and Open Spaces .....	8
<b>4 RESULTS OF THE ASSESSMENT.....</b>	<b>9</b>
4.1 Windows & Amenity Areas Considered.....	9
4.2 Daylight to Windows .....	9
4.3 Sunlight to Windows .....	9
4.4 Overshadowing to Gardens and Open Spaces .....	9
4.5 Conclusion.....	10
<b>5 CLARIFICATIONS .....</b>	<b>11</b>
5.1 General.....	11

## APPENDICES

<b>APPENDIX 1</b>	<b>WINDOW &amp; GARDEN KEY</b>
<b>APPENDIX 2</b>	<b>DAYLIGHT AND SUNLIGHT RESULTS</b>

---

# **1 EXECUTIVE SUMMARY**

## **1.1 Overview**

- 1.1.1 Right of Light Consulting has been commissioned by Mark Middleton to undertake a daylight and sunlight assessment of the proposed development at 5 Ventana Court, Latchfords Yard, 61A Endell Street, London WC2H 9AJ.
- 1.1.2 The assessment is based on the various numerical tests laid down in the Building Research Establishment (BRE) guide 'Site Layout Planning for Daylight and Sunlight: a guide to good practice, 2<sup>nd</sup> Edition' by P J Littlefair 2011.
- 1.1.3 The aim of the assessment is to consider the impact of the development on the light receivable by the neighbouring properties at 61 and 61A Endell Street.
- 1.1.4 The window key in Appendix 1 identifies the windows analysed in this assessment. Appendix 2 gives the numerical results of the various daylight and sunlight tests.
- 1.1.5 All neighbouring windows pass the relevant BRE diffuse daylight and direct sunlight tests. The development also passes the BRE overshadowing to gardens and open spaces test.
- 1.1.6 In summary, the numerical results in this assessment demonstrate that the proposed development will have a low impact on the light receivable by its neighbouring properties. In our opinion, the proposed development sufficiently safeguards the daylight and sunlight amenity of the neighbouring properties.

---

## 2 INFORMATION SOURCES

### 2.1 Drawings

2.1.1 This report is based on the following drawings:

Coffey / Architects

LTY - CoA-00-00-DR-A-(00)001	Site Location Plan	Rev P02
LTY - CoA-00-00-DR-A-(00)100	Existing Ground & First Floor Plans	Rev P02
LTY - CoA-00-00-DR-A-(20)100	Proposed Ground & First Floor Plans	Rev P02
LTY - CoA-00-02-DR-A-(00)102	Existing Second Floor Plans	Rev P02
LTY - CoA-00-02-DR-A-(01)102	Demolition Second Floor Plan	Rev P02
LTY - CoA-00-02-DR-A-(20)102	Proposed Second Floor Plan	Rev P02
LTY - CoA-00-03-DR-A-(00)103	Existing Third Floor Plans	Rev P01
LTY - CoA-00-03-DR-A-(00)103	Demolition Third Floor Plan	Rev P02
LTY - CoA-00-03-DR-A-(20)103	Proposed Third Floor Plan	Rev P03
LTY - CoA-00-03-DR-A-(20)104	Proposed Roof Plan	Rev P02
LTY - CoA-00-04-DR-A-(00)104	Existing Roof Plan	Rev P02
LTY - CoA-00-XX-DR-A-(00)200	Existing North Elevation	Rev P02
LTY - CoA-00-XX-DR-A-(00)202	Existing South Elevation	Rev P02
LTY - CoA-00-XX-DR-A-(00)203	Existing East Elevation	Rev P02
LTY - CoA-00-XX-DR-A-(00)300	Existing Section AA & BB	Rev P02
LTY - CoA-00-XX-DR-A-(00)302	Existing Section CC	Rev P02
LTY - CoA-00-XX-DR-A-(00)305	Existing Section DD	Rev P02
LTY - CoA-00-XX-DR-A-(00)306	Existing Section EE	Rev P02
LTY - CoA-00-XX-DR-A-(20)200	Proposed North Elevation	Rev P03
LTY - CoA-00-XX-DR-A-(20)202	Proposed South Elevation	Rev P03
LTY - CoA-00-XX-DR-A-(20)203	Proposed East Elevation	Rev P03
LTY - CoA-00-XX-DR-A-(20)300	Proposed Section AA & BB	Rev P03
LTY - CoA-00-XX-DR-A-(20)302	Proposed Section CC	Rev P02
LTY - CoA-00-XX-DR-A-(20)305	Proposed Section DD	Rev P03
LTY - CoA-00-XX-DR-A-(20)306	Proposed Section EE	Rev P03
LTY - CoA-00-XX-M3-A	Architect 3D Model Existing	Rev -
LTY - CoA-00-XX-M3-A	Architect 3D Model Proposed	Rev P01

---

## 2.2 Daylight Distribution Room Layout Information

2.2.1 The daylight distribution test has been applied based on the following room layout information:

Online Local Authority planning records

61 A Endell Street:

A1153/30 Ground Floor Plan

Rev P3

A1153/31 First Floor Plan

Rev P3

61 Endell Street:

011 Existing Listed Building Plans

Rev P2

---

### **3 METHODOLOGY OF THE ASSESSMENT**

#### **3.1 Local Planning Policy**

- 3.1.1 We understand that the Local Authority take the conventional approach of considering daylight and sunlight amenity with reference to the various numerical tests laid down in the Building Research Establishment (BRE) guide 'Site Layout Planning for Daylight and Sunlight: a guide to good practice, 2<sup>nd</sup> Edition' by P J Littlefair 2011. A new European standard BS EN 17037 'Daylight in Buildings' was published in May 2019. An update to the BRE guide to take into account the European standard is expected sometime in 2022. It is not yet clear, how and to what extent, the European recommendations will be adopted by the BRE and Local Authorities.
- 3.1.2 The standards set out in the BRE guide are intended to be used flexibly. The BRE guide states:
- 3.1.3 "The guide is intended for building designers and their clients, consultants and planning officials. The advice given here is not mandatory and the guide should not be seen as an instrument of planning policy; its aim is to help rather than constrain the designer. Although it gives numerical guidelines, these should be interpreted flexibly, since natural lighting is only one of many factors in site layout design."

#### **3.2 National Planning Policy Framework**

- 3.2.1 The BRE numerical guidelines should be considered in the context of the National Planning Policy Framework (NPPF), which stipulates that local planning authorities should take a flexible approach to daylight and sunlight to ensure the efficient use of land. The NPPF states:
- 3.2.2 "Local planning authorities should refuse applications which they consider fail to make efficient use of land, taking into account the policies in this Framework. In this context, when considering applications for housing, authorities should take a flexible approach in applying policies or guidance relating to daylight and sunlight, where they would otherwise inhibit making efficient use of a site (as long as the resulting scheme would provide acceptable living standards)."

---

### **3.3 Daylight to Windows**

- 3.3.1 Diffuse daylight is the light received from the sun which has been diffused through the sky. Even on a cloudy day, when the sun is not visible, a room will continue to be lit with light from the sky. This is diffuse daylight.
- 3.3.2 Diffuse daylight calculations should be undertaken to all rooms within domestic properties, where daylight is required, including living rooms, kitchens and bedrooms. The BRE guide states that windows to bathrooms, toilets, storerooms, circulation areas and garages need not be analysed. These room types are non-habitable and do not have a requirement for daylight.
- 3.3.3 The BRE guide states that the tests may also be applied to non-domestic buildings where there is a reasonable expectation of daylight. The BRE guide explains that this would normally include schools, hospitals, hotels and hostels, small workshops and some offices. The BRE guide is not explicit in terms of which types of offices it regards as having a requirement for daylight. However, it is widely accepted amongst consultants and local authorities, that for planning purposes, offices (which are commercial in nature) do not have a requirement for daylight. The point is touched on in the 'Daylighting and Sunlighting' guidance note published by the Royal Institution of Chartered Surveyors (RICS), which gives guidance to surveyors on how to produce their reports:
- 3.3.4 "The report should establish the limits of the assessment. For example, existing commercial premises are rarely assessed for loss of amenity."
- 3.3.5 The BRE guide contains two tests which measure diffuse daylight:

#### **Test 1 Vertical Sky Component**

- 3.3.6 The Vertical Sky Component is a measure of available skylight at a given point on a vertical plane. Diffuse daylight may be adversely affected if after a development the Vertical Sky Component is both less than 27% and less than 0.8 times its former value.
- 3.3.7 The BRE guide states that the total amount of skylight can be calculated by finding the Vertical Sky Component at the centre of each main window. The BRE guide does not define the term 'main window'. However, in our opinion, where a room has



---

multiple windows, the largest window is usually taken as the main window and the smaller window(s) as secondary. Although we generally follow the practice of testing all windows, including secondary windows, our interpretation of the BRE guide is that the Vertical Sky Component targets do not apply to secondary windows.

### **Test 2 Daylight Distribution**

- 3.3.8 The distribution of daylight within a room can be calculated by plotting the 'no sky line'. The no sky line is a line which separates areas of the working plane that do and do not have a direct view of the sky. Daylight may be adversely affected if, after the development, the area of the working plane in a room which can receive direct skylight is reduced to less than 0.8 times its former value.
- 3.3.9 The BRE guide states that both the total amount of skylight (Vertical Sky Component) and its distribution within the building (Daylight Distribution) are important. The BRE guide states that where room layouts are known, the impact on the daylighting distribution can be found by plotting the 'no sky line' in each of the main rooms. Therefore, we are of the opinion that application of the test is not a requirement of the BRE guide where room layouts are not known. We don't endorse the practice of applying the test based on assumed room layouts, because the test is very sensitive to the size and layout of the room and the results are likely to be misleading. However, we can provide additional daylight distribution data upon request by the local authority, if neighbouring room layout information is confirmed.

## **3.4 Sunlight availability to Windows**

- 3.4.1 The BRE sunlight tests should be applied to all main living rooms and conservatories which have a window which faces within 90 degrees of due south. The guide states that kitchens and bedrooms are less important, although care should be taken not to block too much sunlight. The tests should also be applied to non-domestic buildings where there is a particular requirement for sunlight.
- 3.4.2 The test is intended to be applied to main windows which face within 90 degrees of due south. However, the BRE guide explains that if the main window faces within 90 degrees of due north, but a secondary window faces within 90 degrees of due south, sunlight to the secondary window should be checked. For completeness, we have

---

tested all windows which face within 90 degrees of due south. The BRE guide states that sunlight availability may be adversely affected if the centre of the window:

- receives less than 25% of annual probable sunlight hours, or less than 5% of annual probable sunlight hours between 21 September and 21 March and
- receives less than 0.8 times its former sunlight hours during either period and
- has a reduction in sunlight received over the whole year greater than 4% of annual probable sunlight hours.

### **3.5 Overshadowing to Gardens and Open Spaces**

3.5.1 The availability of sunlight should be checked for all open spaces where sunlight is required. This would normally include:

- Gardens, usually the main back garden of a house
- Parks and playing fields
- Children's playgrounds
- Outdoor swimming pools and paddling pools
- Sitting out areas, such as those between non-domestic buildings and in public squares
- Focal points for views such as a group of monuments or fountains.

3.5.2 One way to consider overshadowing is by preparing shadow plots. However, the BRE guide states that it must be borne in mind that nearly all structures will create areas of new shadow, and some degree of transient overshadowing is to be expected. Therefore, shadow plots are of limited use as interpretation of the plots is subjective. Shadow plots have not been undertaken as part of this assessment.

3.5.3 The BRE guide also contains an objective overshadowing test which has been adopted for the purpose of this assessment. The guide recommends that at least 50% of the area of each amenity space listed above should receive at least two hours of sunlight on 21 March. If as a result of new development an existing garden or amenity area does not meet the above, and the area which can receive two hours of sunlight on 21 March is less than 0.8 times its former value, then the loss of light is likely to be noticeable.

---

## **4 RESULTS OF THE ASSESSMENT**

### **4.1 Windows & Amenity Areas Considered**

- 4.1.1 The aim of the assessment is to assess the impact of the development on the light receivable by the neighbouring properties at 61 and 61A Endell Street.
- 4.1.2 Appendix 1 provides a plan and photographs to indicate the positions of the windows analysed in this assessment. Appendix 2 lists the detailed numerical daylight and sunlight test results.

### **4.2 Daylight to Windows**

#### Vertical Sky Component

- 4.2.1 All windows with a requirement for daylight pass the Vertical Sky Component test.

#### Daylight Distribution

- 4.2.2 We have undertaken the Daylight Distribution test where room layouts are known. All rooms with a requirement for daylight pass the daylight distribution test.

### **4.3 Sunlight to Windows**

- 4.3.1 All windows that face within 90 degrees of due south have been tested for direct sunlight. All windows with a requirement for sunlight pass both the total annual sunlight hours test and the winter sunlight hours test. The proposed development therefore satisfies the BRE direct sunlight to windows requirements.

### **4.4 Overshadowing to Gardens and Open Spaces**

- 4.4.1 There are no nearby gardens or amenity areas directly to the north of the development. The proposed development will therefore not create any new areas which receive less than two hours of sunlight on 21 March. The proposed development therefore satisfies the BRE overshadowing to gardens and open spaces requirements.

---

## **4.5 Conclusion**

- 4.5.1 In summary, the numerical results in this assessment demonstrate that the proposed development will have a low impact on the light receivable by its neighbouring properties. In our opinion, the proposed development sufficiently safeguards the daylight and sunlight amenity of the neighbouring properties.

---

## 5 CLARIFICATIONS

### 5.1 General

- 5.1.1 The report provided is solely for the use of the client and no liability to anyone else is accepted.
- 5.1.2 The assessment is limited to assessing daylight, sunlight and overshadowing to neighbouring properties as set out in section 2.2, 3.2 and 3.3 of the BRE Guide.
- 5.1.3 The assessment is based on the information listed in section 2 of this report and a site visit undertaken on 6 May 2022. We have not had access to neighbouring properties.
- 5.1.4 This assessment does not calculate the effects of trees and hedges on daylight, sunlight and overshadowing to gardens. The BRE guide states that it is usual to ignore the effect of existing trees.
- 5.1.5 The impact on solar panels is a material planning consideration. However, the BRE guide does not provide assessment criteria for this. The assessment of impact on any neighbouring solar panels is therefore beyond the scope of this report.
- 5.1.6 We have undertaken the assessment following the guidelines of the RICS publication "Surveying Safely". Where limited access or information is available, assumptions will have been made which may affect the conclusions reached in this report. For example, where neighbouring room uses are not known, we will either make an assumption regarding the use, or take the prudent approach of treating the use of the room as being used for domestic purposes. Therefore, the report may need to be updated if room uses are confirmed by the local authority or by the consultation responses.
- 5.1.7 This report is based upon and subject to the scope of work set out in Right of Light Consulting's quotation and standard terms and conditions.

---

## **APPENDICES**

---

## **APPENDIX 1**

### WINDOW & GARDEN KEY



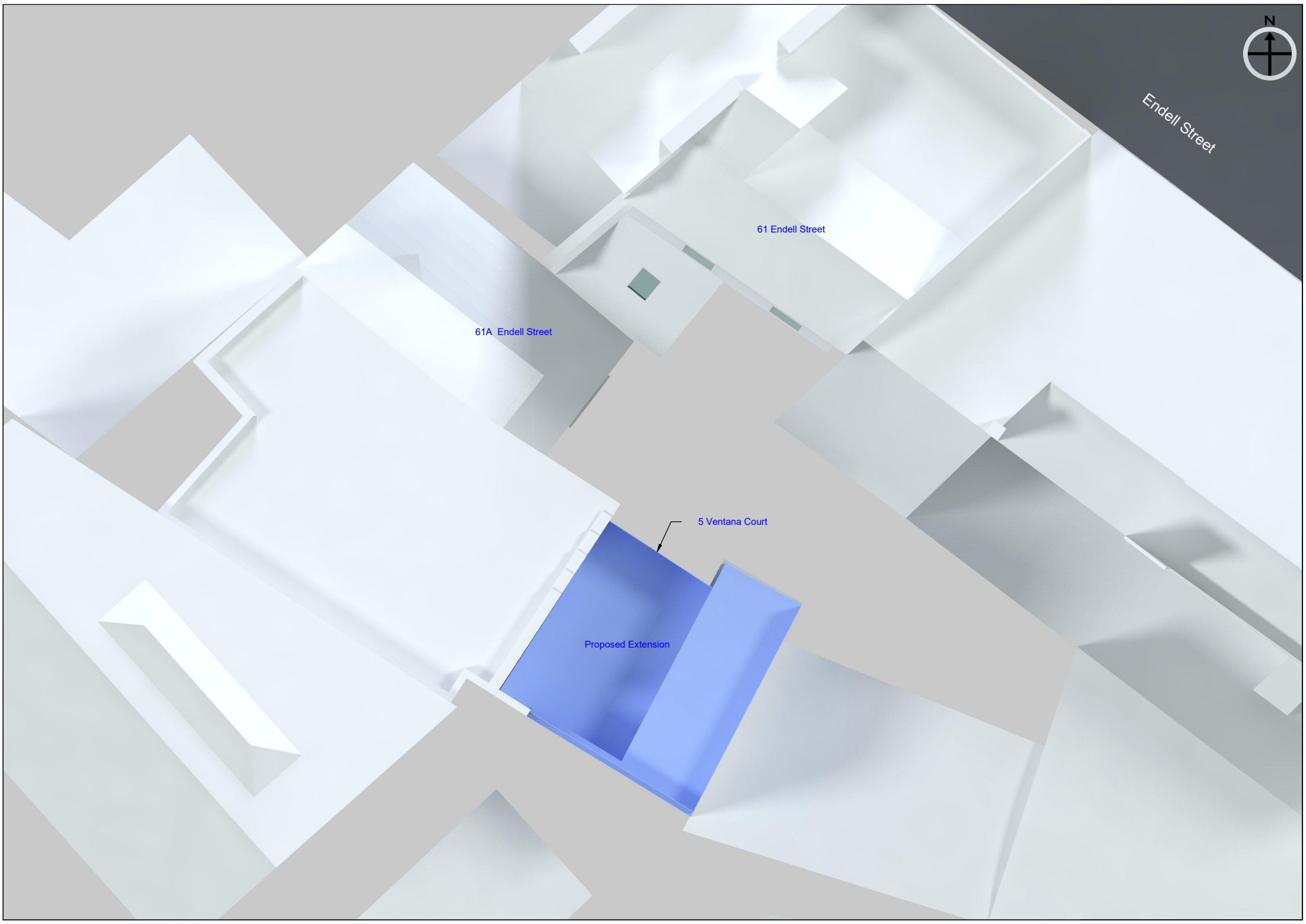
Endell Street

61 Endell Street

61A Endell Street

5 Ventana Court

Proposed Extension







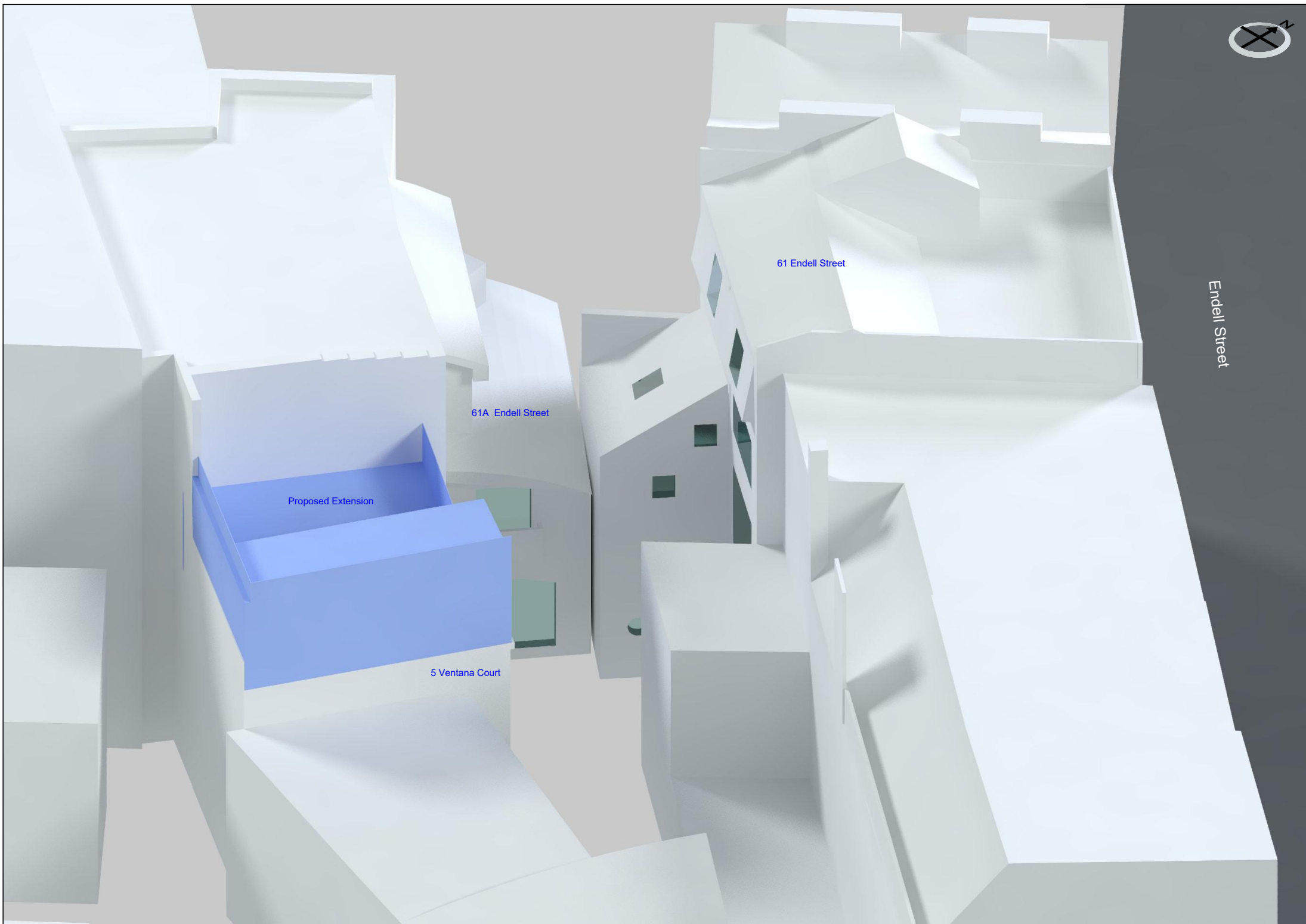
Endell Street

61 Endell Street

61A Endell Street

Proposed Extension

5 Ventana Court





Endell Street

61 Endell Street

61A Endell Street

Proposed Extension

5 Ventana Court



Proposed Extension

5 Ventana Court

61A Endell Street

61 Endell Street

Endell Street



Endell Street

61 Endell Street

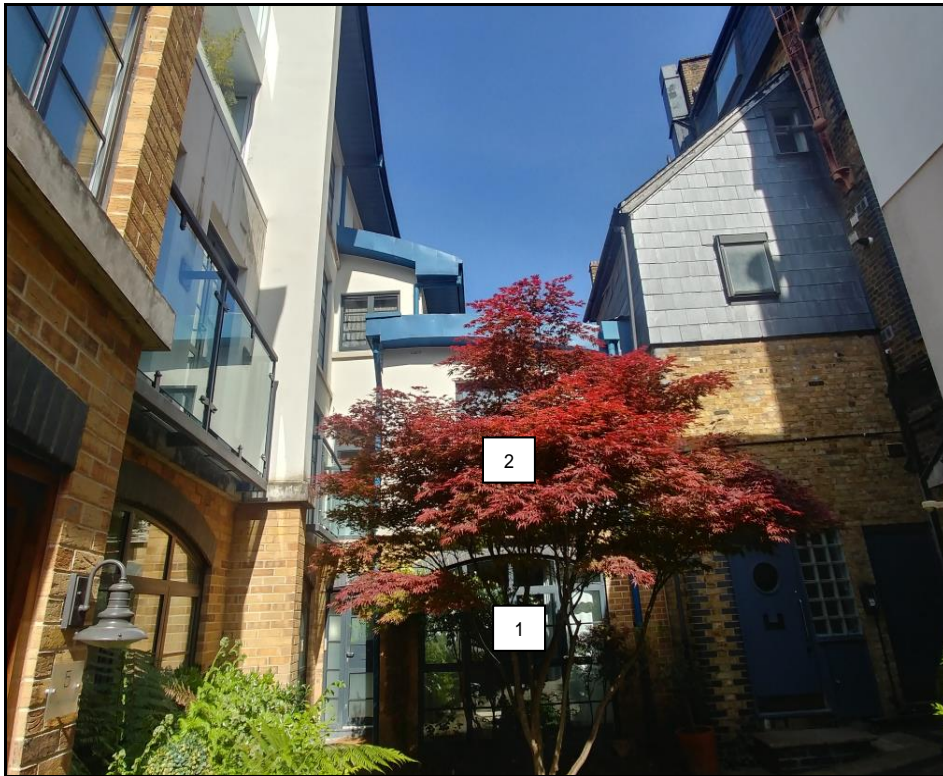
Proposed Extension

5 Ventana Court

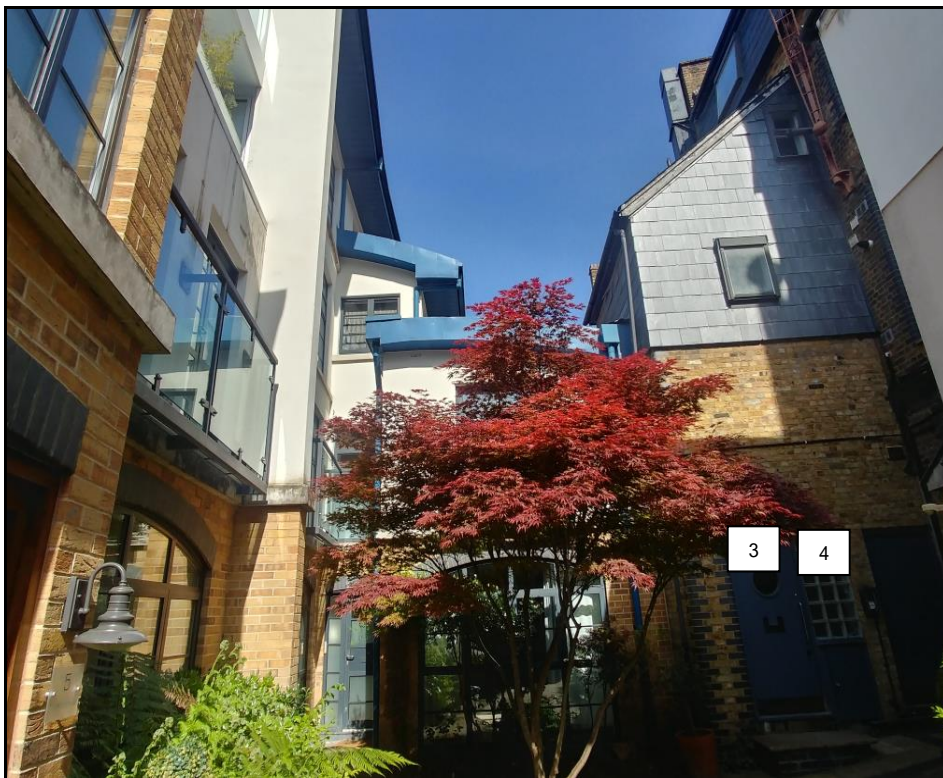
61A Endell Street



## Neighbouring Windows



61A Endell Street



61 Endell Street



61 Endell Street



61 Endell Street

---

## **APPENDIX 2**

### **DAYLIGHT AND SUNLIGHT RESULTS**

## Appendix 2 - Vertical Sky Component

### 5 Ventana Court, Latchfords Yard, 61A Endell Street, London WC

Reference	Room Use	Vertical Sky Component			
		Before	After	Loss	Ratio
<u>61A Endell Street</u>					
<u>Ground Floor</u>					
Window 1	Reception	11.8%	10.7%	1.1%	0.91
<u>First Floor</u>					
Window 2	Bedroom	17.7%	15.6%	2.1%	0.88
<u>61 Endell Street</u>					
<u>Ground Floor</u>					
Window 3	Non Domestic	11.0%	9.9%	1.1%	0.9
Window 4	Non Domestic	9.1%	8.1%	1.0%	0.89
<u>First Floor</u>					
Window 5	Non Domestic	21.8%	20.1%	1.7%	0.92
Window 6	Non Domestic	57.5%	57.1%	0.4%	0.99
Window 7	Office	21.9%	19.7%	2.2%	0.9
Window 8	Staircase	22.6%	21.5%	1.1%	0.95
<u>Second Floor</u>					
Window 9	Dining	34.0%	33.2%	0.8%	0.98
<u>Third Floor</u>					
Window 10	Bathroom/WC	46.5%	46.5%	0.0%	1.0
Window 11	Bedroom	46.5%	46.5%	0.0%	1.0



## Appendix 2 - Daylight Distribution

### 5 Ventana Court, Latchfords Yard, 61A Endell Street, London WC

Reference	Room Use	Daylight Distribution			
		Before	After	Loss	Ratio
<u>61A Endell Street</u>					
<u>Ground Floor</u>					
Window 1	Reception	88%	87%	1.0%	0.99
<u>First Floor</u>					
Window 2	Bedroom	88%	79%	9.0%	0.9
<u>61 Endell Street</u>					
<u>Ground Floor</u>					
Windows 3 & 4	Non Domestic	73%	73%	0.0%	1.0
<u>First Floor</u>					
Windows 5 & 6	Non Domestic	99%	99%	0.0%	1.0
Window 7	Office	94%	86%	8.0%	0.91
Window 8	Staircase	40%	40%	0.0%	1.0
<u>Second Floor</u>					
Window 8	Landing	0.0%	0.0%	0.0%	1.0
Window 9	Dining	98%	98%	0.0%	1.0
<u>Third Floor</u>					
Window 10	Bathroom/WC	97%	97%	0.0%	1.0
Window 11	Bedroom	96%	96%	0.0%	1.0

## Appendix 2 - Sunlight to Windows

### 5 Ventana Court, Latchfords Yard, 61A Endell Street, London WC

Reference	Room Use	Sunlight to Windows							
		Total Sunlight Hours				Winter Sunlight Hours			
		Before	After	Loss	Ratio	Before	After	Loss	Ratio
<u>61A Endell Street</u>									
<u>Ground Floor</u>									
Window 1	Reception	17%	15%	2%	0.88	2%	2%	0%	1.0
<u>First Floor</u>									
Window 2	Bedroom	27%	23%	4%	0.85	6%	4%	2%	0.67
<u>61 Endell Street</u>									
<u>Ground Floor</u>									
Window 3	Non Domestic	20%	18%	2%	0.9	4%	4%	0%	1.0
Window 4	Non Domestic	17%	14%	3%	0.82	2%	2%	0%	1.0
<u>First Floor</u>									
Window 5	Non Domestic	44%	39%	5%	0.89	15%	10%	5%	0.67
Window 6	Non Domestic	65%	65%	0%	1.0	14%	14%	0%	1.0
Window 7	Office	46%	44%	2%	0.96	10%	8%	2%	0.8
Window 8	Staircase	48%	46%	2%	0.96	20%	18%	2%	0.9
<u>Second Floor</u>									
Window 9	Dining	70%	70%	0%	1.0	22%	22%	0%	1.0
<u>Third Floor</u>									
Window 10	Bathroom/WC	81%	81%	0%	1.0	28%	28%	0%	1.0
Window 11	Bedroom	81%	81%	0%	1.0	28%	28%	0%	1.0